

FALLS CREEK RIDGE

1979 IN NW 1/4 SEC. 7 ADDITION

LOCATED IN GOV. LOT 1, SEC. 7, T1N, R12W, S.M., CLAM GULCH, ALASKA
 SCALE 1" = 200' AREA = 33.514 AC. MARCH 21, 1979
 BY EMIL R. AND FRANCES M. BARTOLOWITS

LEGEND

- ⊕ - 1919 brass cap by GLO found.
- ⊙ - 1977 brass cap by 268-S found.
- - 1/2" x 24" rebar set.
- - 1/2" rebar.

NOTE

A 20' building set back line and 5' underground utility, or overhead clearing easement all streets for Homer Electric Association.

PLAT APPROVAL

This plat having been approved by the Kenai Peninsula Borough Planning Commission as recorded in the official minutes of the meeting of April 23, 1979 is hereby acknowledged and accepted as the official plat, subject to any and all conditions and requirements of ordinances and law appertaining thereto.

KENAI PENINSULA BOROUGH

BY: Phyllis Warming

CERTIFICATE OF OWNERSHIP AND DEDICATION

We hereby certify that we are the owners of the property shown and described hereon, and that we hereby adopt this plan of subdivision, and dedicate all streets to public use, and to the use of public utilities.

Emil R. Bartolowits
 EMIL R. BARTOLOWITS BOX 13, CLAM GULCH, ALASKA 99568

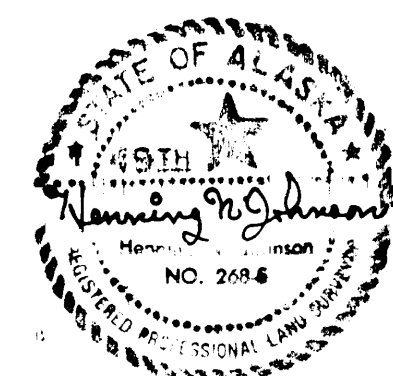
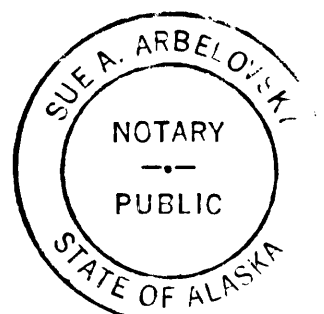
Frances M. Bartolowits
 FRANCES M. BARTOLOWITS BOX 13, CLAM GULCH, ALASKA 99568

STATE OF ALASKA, THIRD JUDICIAL DISTRICT

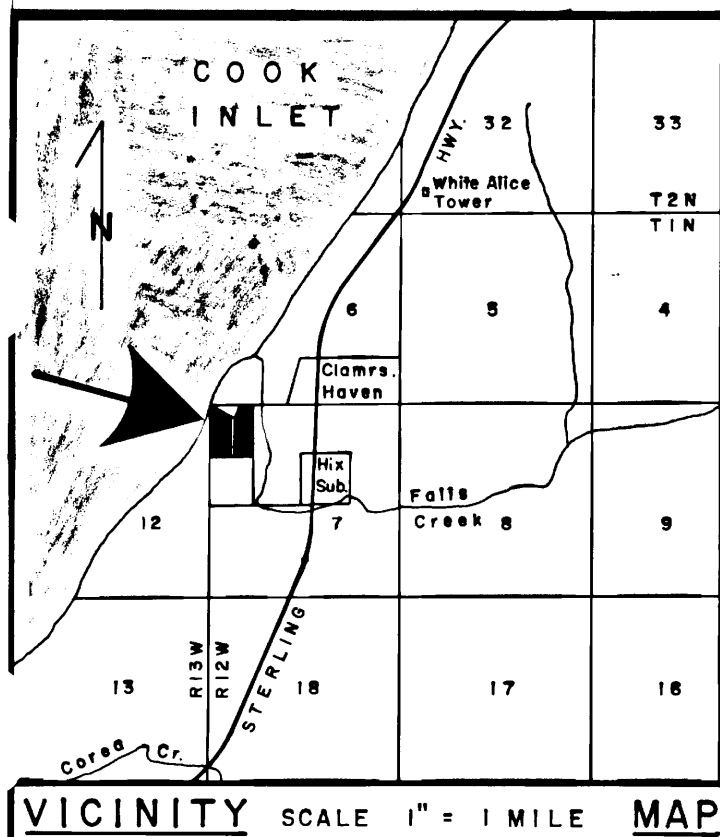
Subscribed and sworn to before me this 9th day of May, 1979

NOTARY PUBLIC FOR ALASKA My commission expires September 13, 1981

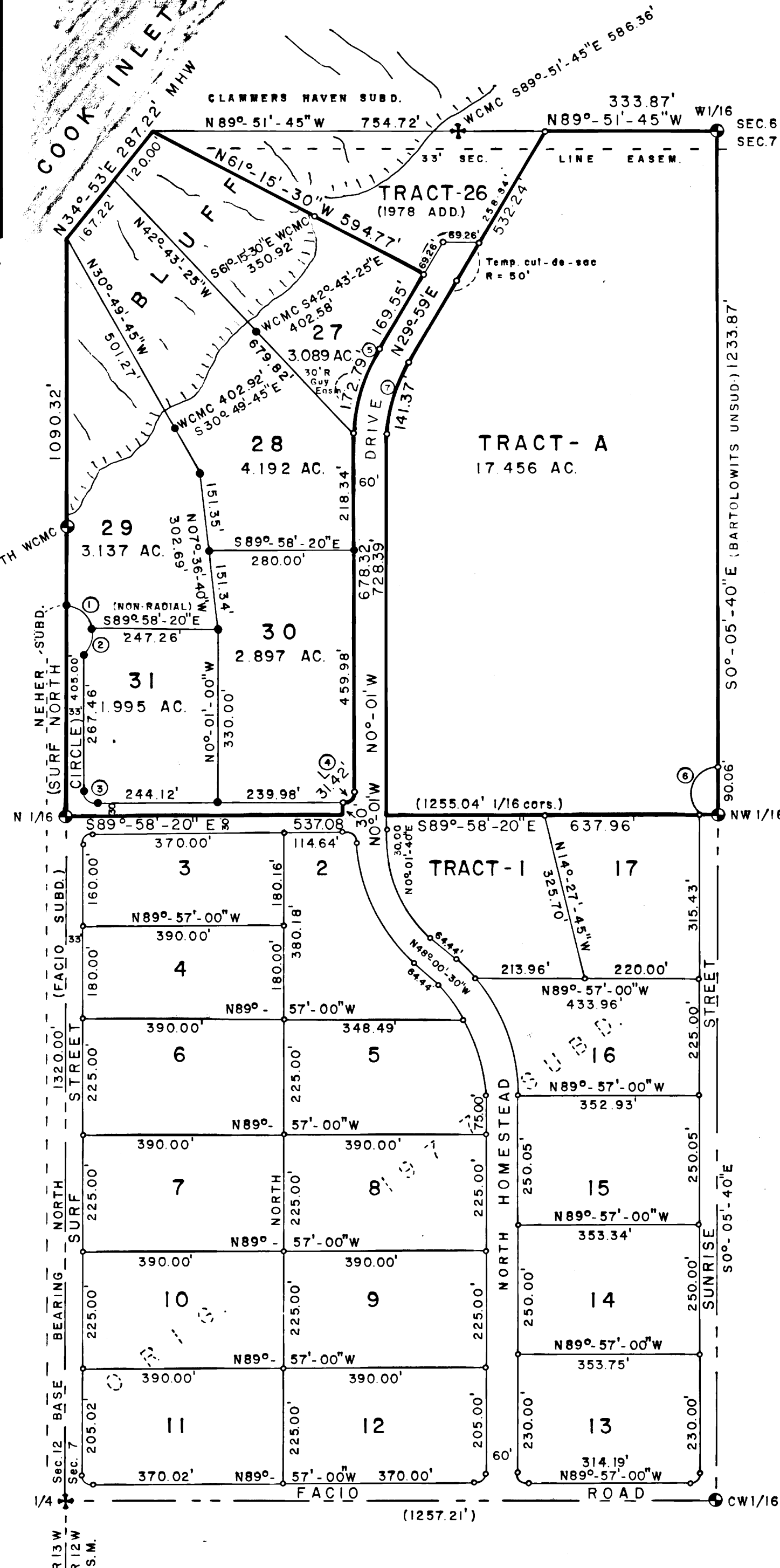
Sue A. Arbelovsky



BOX 27 CLAM GULCH, AK 99568



VICINITY SCALE 1" = 1 MILE MAP



CURVES

- | | |
|---|---|
| ①
A = 84°-17'-20"
R = 50.00'
C = 67.10'
T = 45.25'
L = 73.55' | ②
A = 54°-24'-40"
R = 50.00'
C = 45.72'
T = 25.70'
L = 47.48' |
| ③
A = 90°-01'-40"
R = 20'
C = 28.29'
T = 20.00'
L = 31.43' | ④
A = 89°-59'-20"
R = 20'
C = 31.42'
T = 20.00'
L = 31.41' |
| ⑤
A = 30°-00'-00"
R = 330.00'
C = 170.82'
T = 88.42'
L = 172.79' | ⑥
A = 143°-06'-00"
R = 50.00'
C = 94.86'
T = 149.85'
L = 124.88' |
| ⑦
A = 30°-00'-00"
R = 270.00'
C = 139.76'
T = 72.35'
L = 141.37' | |

79-61

FILED 3-
 Homer REC. DIST.
 DATE 5-23-1979
 TIME 3:27 P.M.
 Requested by J.P. Borough
 Address J.P. Borough