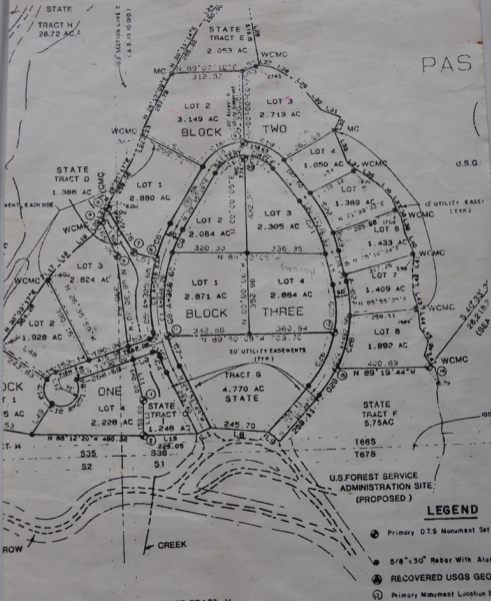


STATE

TRACT H  
26.72 AC.

STATE  
TRACT E  
2.053 AC

PAS



U.S.G.

**LEGEND**

- ① Primary D.T.S. Monument Set T
- ② 5/8" x 30" Rebar With Alum.
- ③ RECOVERED USGS GEOID
- ④ Primary Monument Location Sym

LOGGING ROAD

STATE TRACT V