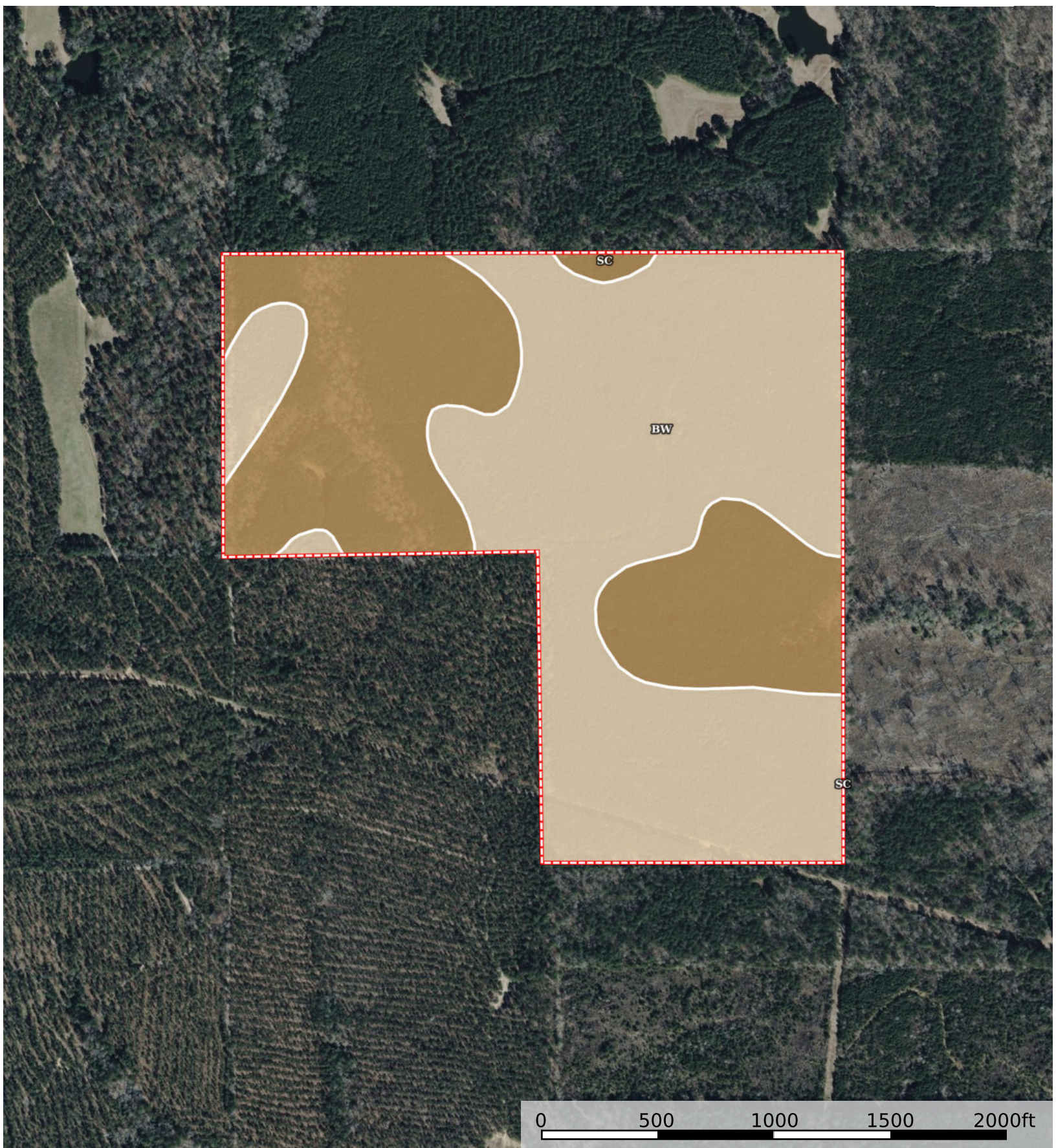


Bennett Place - J.S. Nolen Estate
Claiborne Parish, Louisiana, 120 AC +/-



 Boundary

Boundary 119.61 ac

SOIL CODE	SOIL DESCRIPTION	ACRES	%	CPI	NCCPI	CAP
Bw	Bowie fine sandy loam, 1 to 5 percent slopes	74.91	62.62	0	80	3e
Sc	Sacul very fine sandy loam, 5 to 12 percent slopes	44.7	37.37	0	76	6e
TOTALS		119.6 1(*)	100%	-	78.49	4.12

(*) Total acres may differ in the second decimal compared to the sum of each acreage soil. This is due to a round error because we only show the acres of each soil with two decimal.

