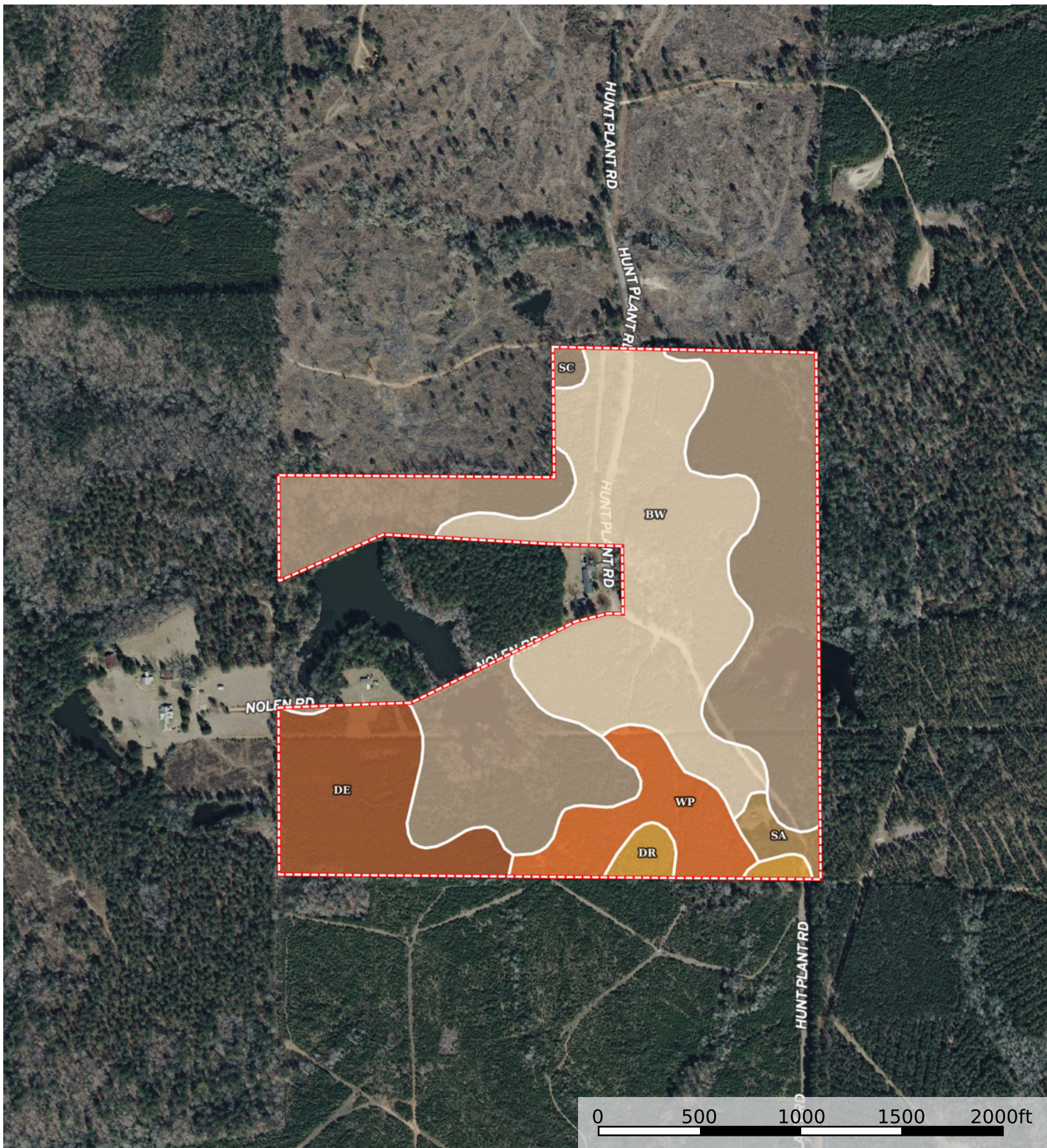


House Place - J.S. Nolen Estate
Claiborne Parish, Louisiana, 115 AC +/-



 Boundary

Boundary 115.99 ac

SOIL CODE	SOIL DESCRIPTION	ACRES	%	CPI	NCCPI	CAP
Sc	Sacul very fine sandy loam, 5 to 12 percent slopes	50.1	43.19	0	76	6e
Bw	Bowie fine sandy loam, 1 to 5 percent slopes	37.25	32.11	0	80	3e
De	Darley gravelly loamy fine sand, 1 to 5 percent slopes	14.97	12.91	0	69	3e
Wp	Wolfpen loamy sand, 1 to 3 percent slopes	9.48	8.17	0	70	3s
Dr	Darley gravelly fine sandy loam, 5 to 12 percent slopes	2.27	1.96	0	51	6e
Sa	Sacul very fine sandy loam, 1 to 5 percent slopes	1.92	1.66	0	79	4e
TOTALS		115.99(*)	100%	-	75.45	4.37

(*) Total acres may differ in the second decimal compared to the sum of each acreage soil. This is due to a round error because we only show the acres of each soil with two decimal.

