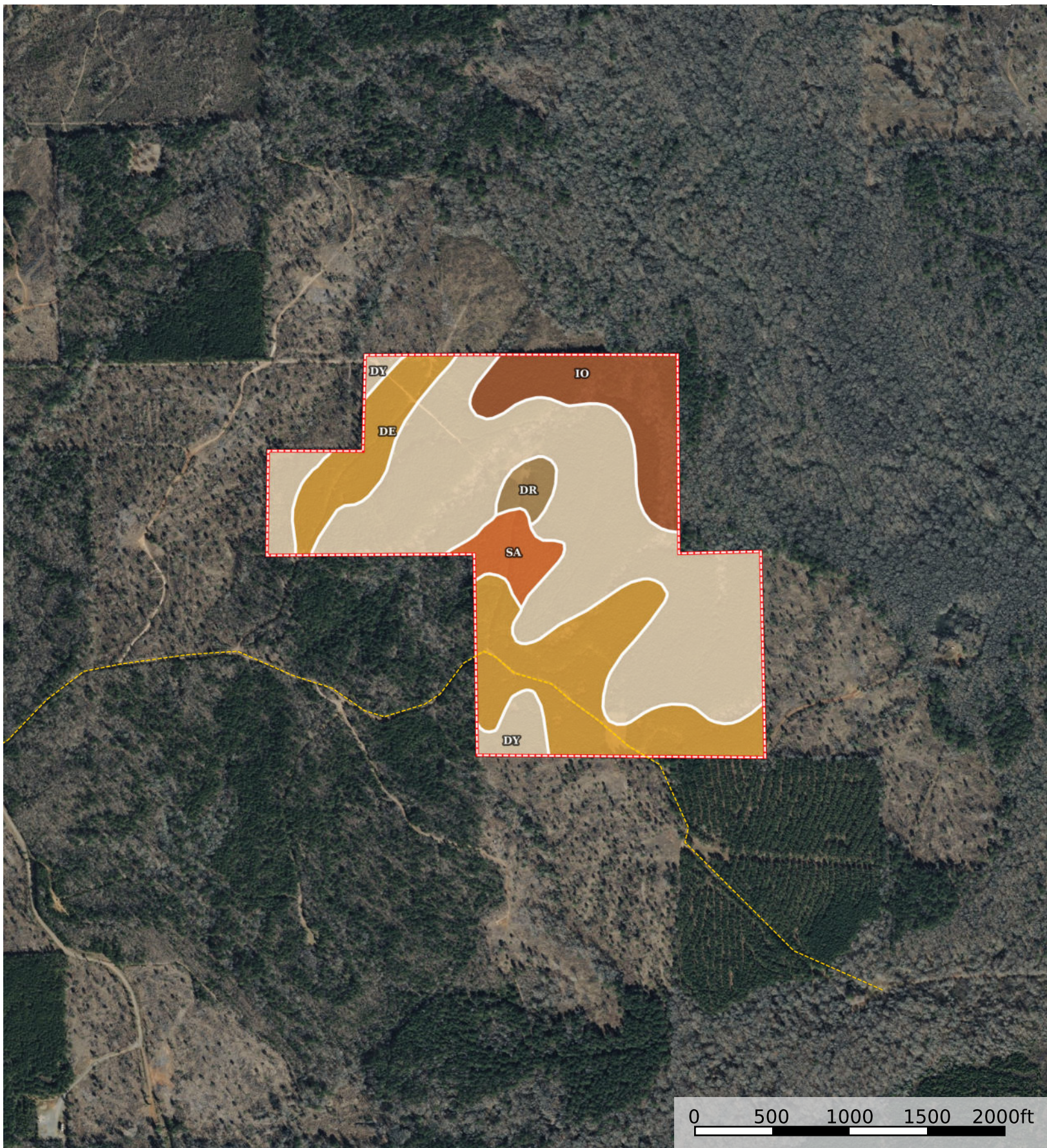


Robinson Place - J.S. Nolen Estate
Claiborne Parish, Louisiana, 126 AC +/-



--- Road / Trail □ Boundary

Boundary 126.02 ac

SOIL CODE	SOIL DESCRIPTION	ACRES	%	CPI	NCCPI	CAP
Dy	Darley-Sacul complex, 12 to 30 percent slopes	69.34	55.03	0	54	6e
De	Darley gravelly loamy fine sand, 1 to 5 percent slopes	34.2	27.14	0	69	3e
lo	Iuka-Dela complex, 0 to 1 percent slopes, frequently flooded	14.83	11.77	0	65	2w
Sa	Sacul very fine sandy loam, 1 to 5 percent slopes	5.11	4.06	0	79	4e
Dr	Darley gravelly fine sandy loam, 5 to 12 percent slopes	2.54	2.02	0	51	6e
TOTALS		126.0 2(*)	100%	-	60.32	4.63

(*) Total acres may differ in the second decimal compared to the sum of each acreage soil. This is due to a round error because we only show the acres of each soil with two decimal.

