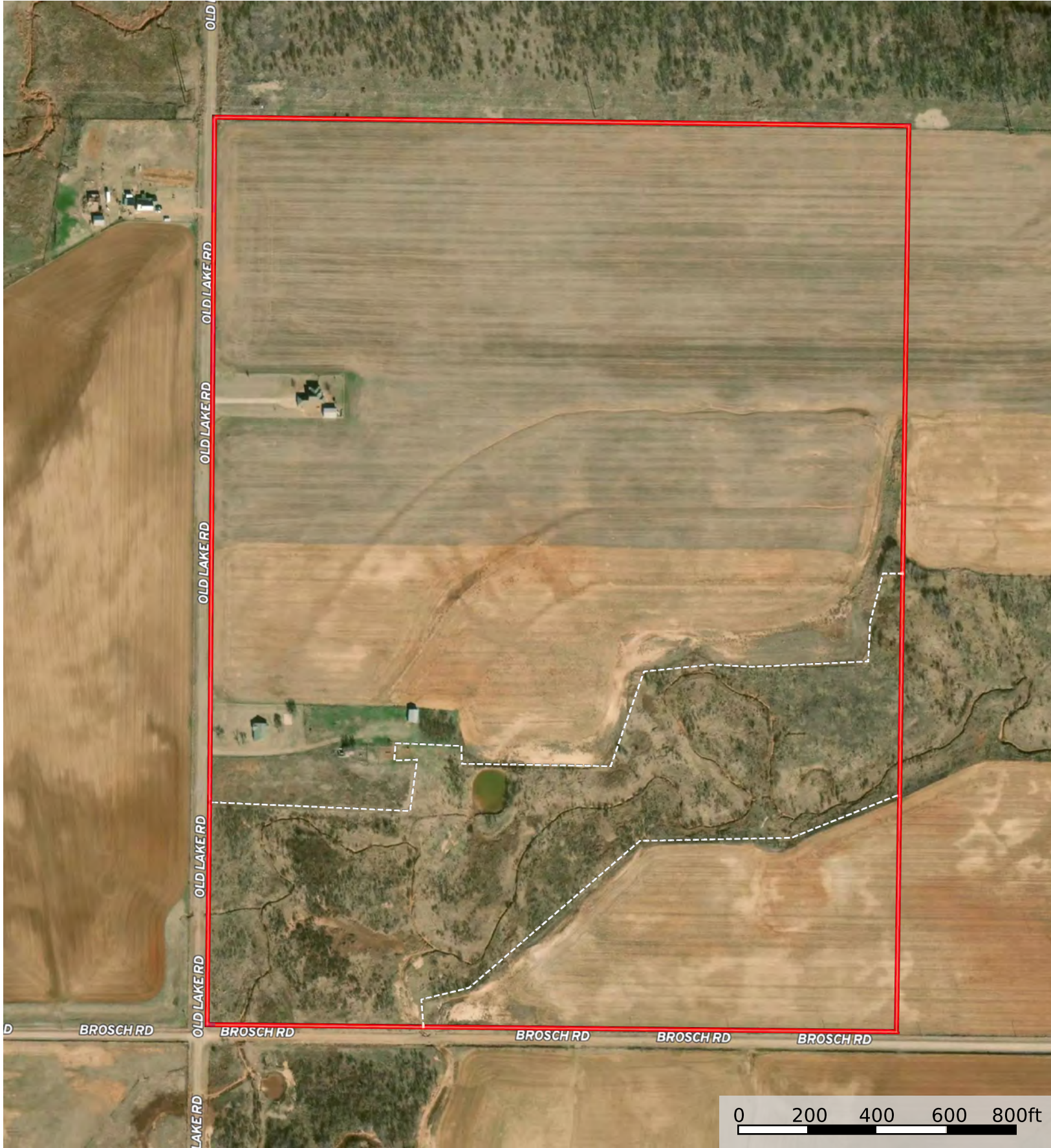


- House
- Workshop
- Pens
- Barn
- Fence
- Boundary
- Stream, Intermittent
- River/Creek
- Water Body

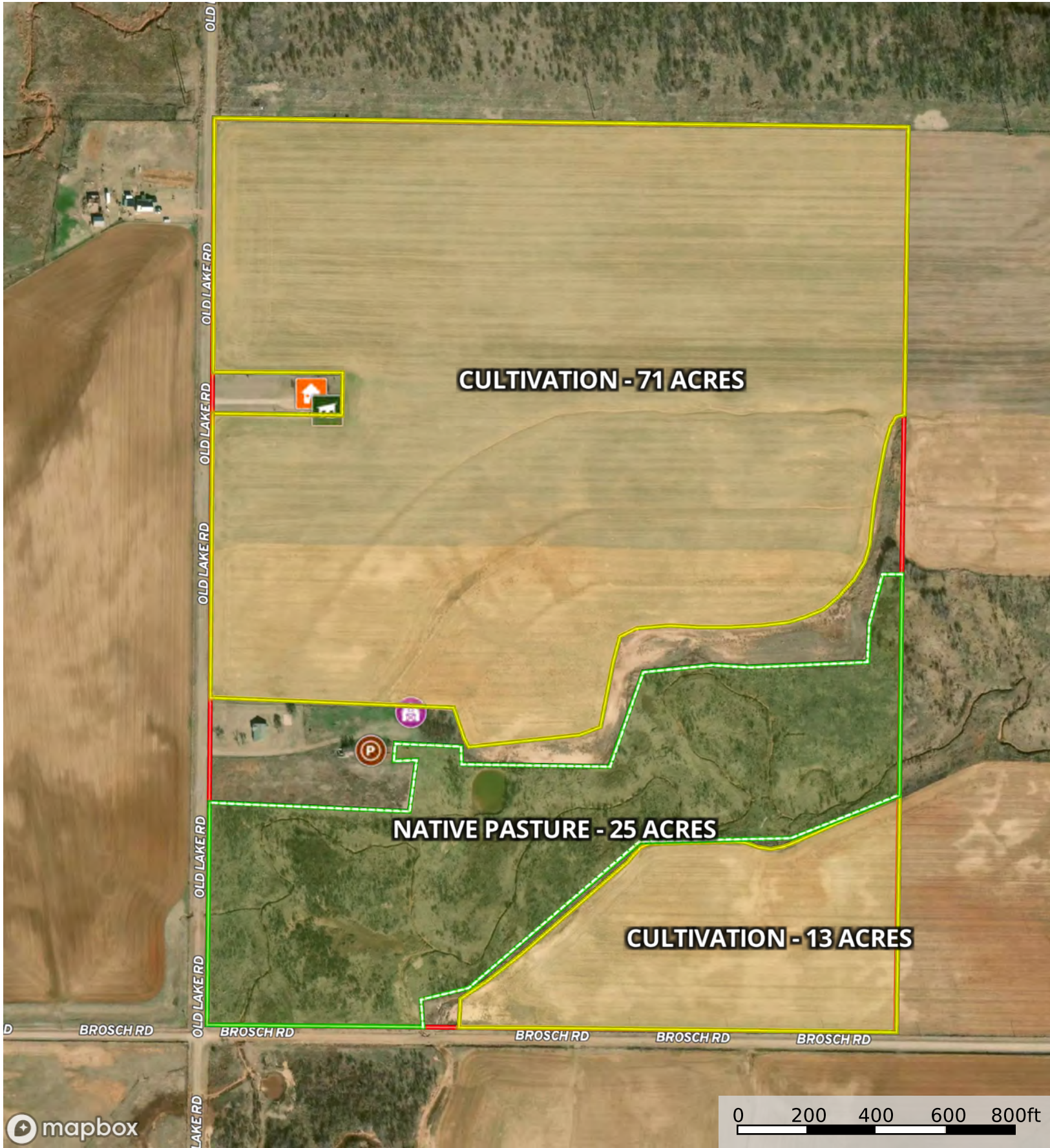


Fence



Boundary





- Workshop
- House
- Pens
- Barn
- Fence
- Native Pasture - 25 Acres
- Cultivation - 71 Acres
- Cultivation - 13 Acres
- Boundary



Boundary

Boundary 119.8 ac

SOIL CODE	SOIL DESCRIPTION	ACRES	%	CPI	NCCPI	CAP
FrA	Frankirk loam, 0 to 1 percent slopes	55.9	46.66	0	56	2c
WnB	Winters loam, 1 to 3 percent slopes	23.1	19.28	0	49	1
Aw	Wheatwood and Port soils, frequently flooded	21.28	17.76	0	54	2w
MoB	Tipton loam, 1 to 3 percent slopes	15.4	12.86	0	66	2e
TcA	Tillman clay loam, 0 to 1 percent slopes	2.35	1.96	0	50	2s
KaB	Kamay silt loam, 1 to 3 percent slopes	1.11	0.93	0	38	3e
Ca	Clairemont silt loam, moist, 0 to 1 percent slopes, occasionally flooded	0.66	0.55	0	57	2w
TOTALS		119.79(*)	100%	-	55.31	1.82

(*) Total acres may differ in the second decimal compared to the sum of each acreage soil. This is due to a round error because we only show the acres of each soil with two decimal.

Capability Legend

Increased Limitations and Hazards

Decreased Adaptability and Freedom of Choice Users

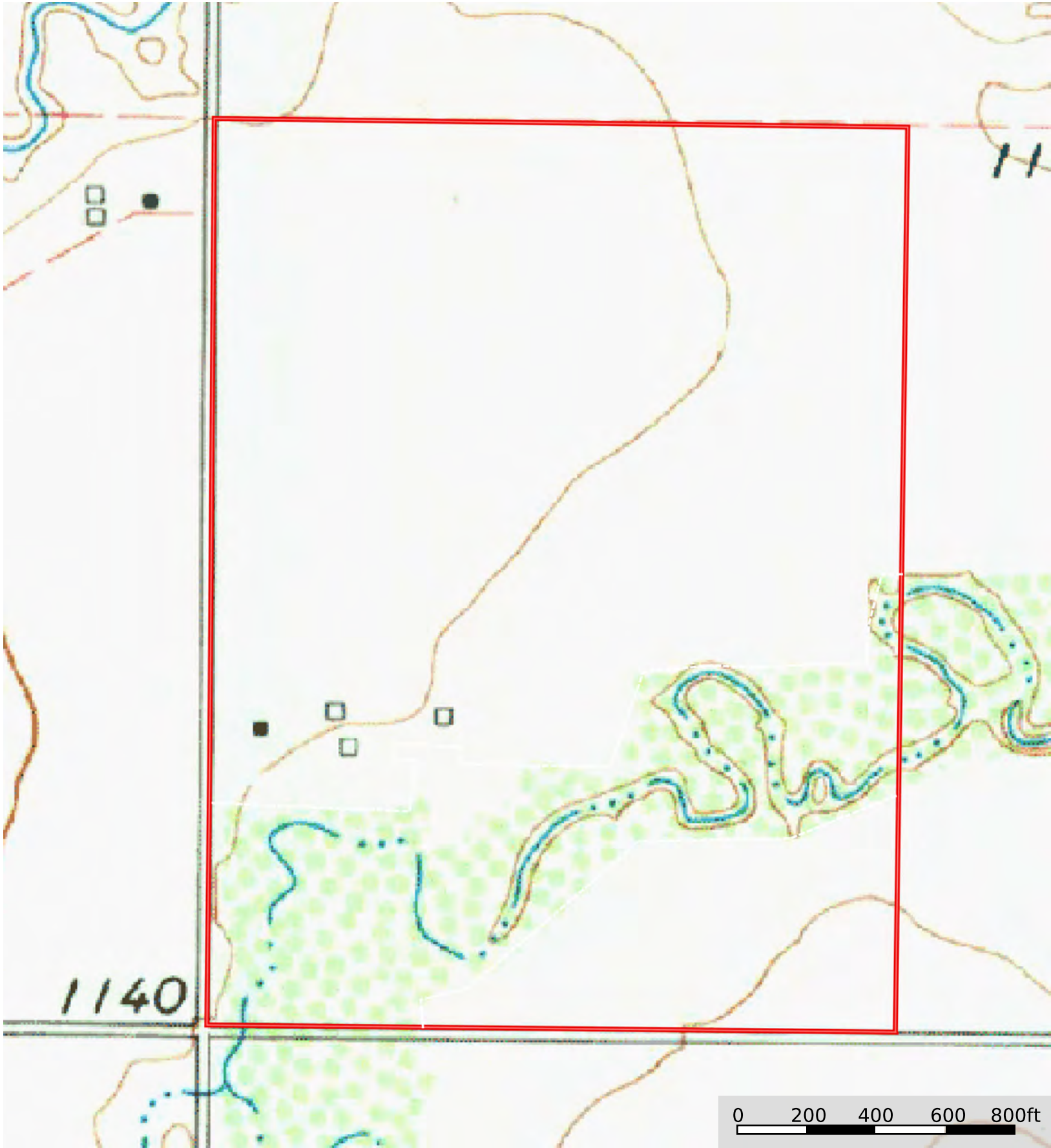
Land, Capability

	1	2	3	4	5	6	7	8
'Wild Life'	•	•	•	•	•	•	•	•
Forestry	•	•	•	•	•	•	•	
Limited	•	•	•	•	•	•	•	
Moderate	•	•	•	•	•	•		
Intense	•	•	•	•	•			
Limited	•	•	•	•				
Moderate	•	•	•					
Intense	•	•						
Very Intense	•							

Grazing Cultivation

(c) climatic limitations (e) susceptibility to erosion

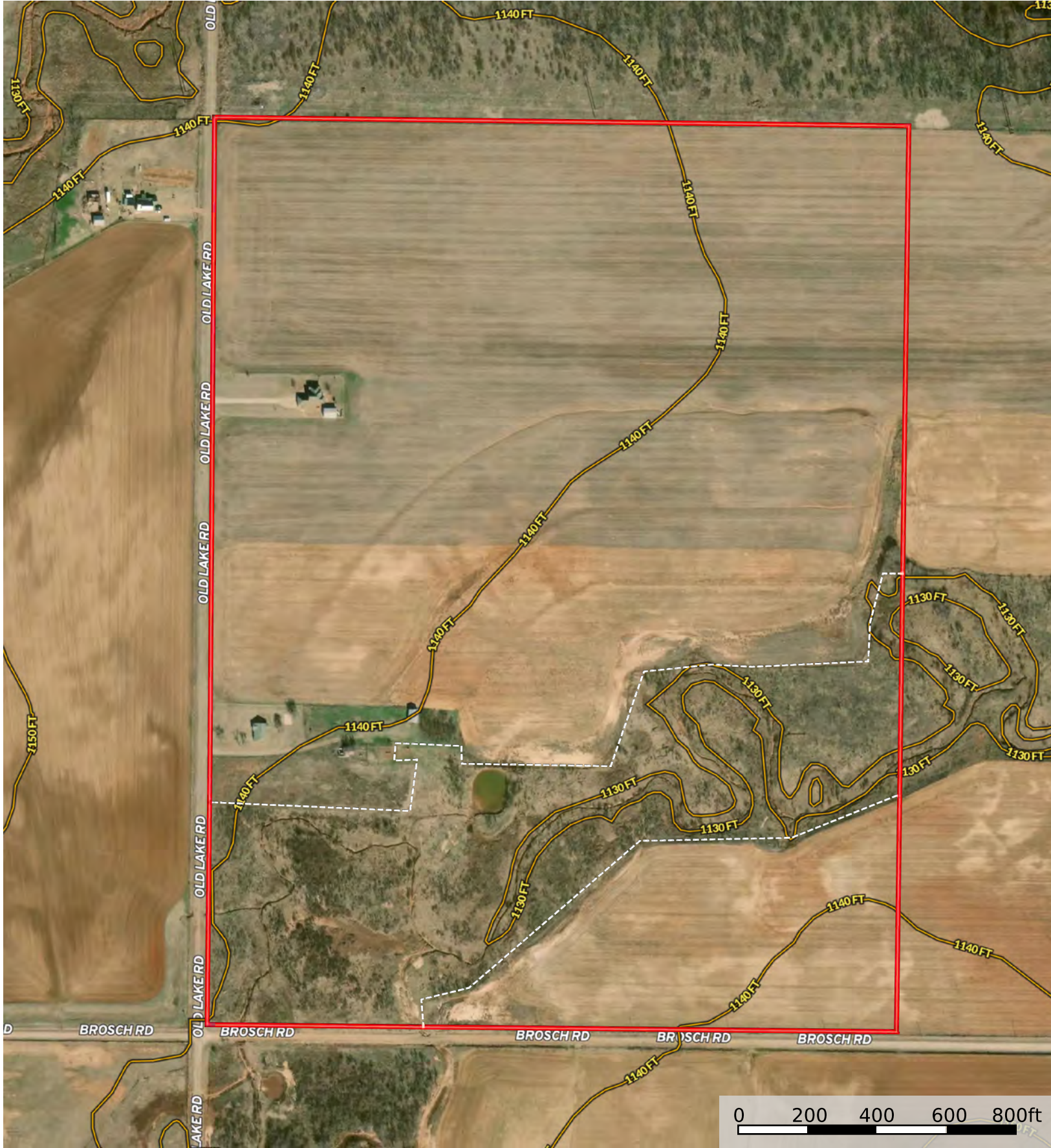
(s) soil limitations within the rooting zone (w) excess of water



Fence



Boundary



Fence

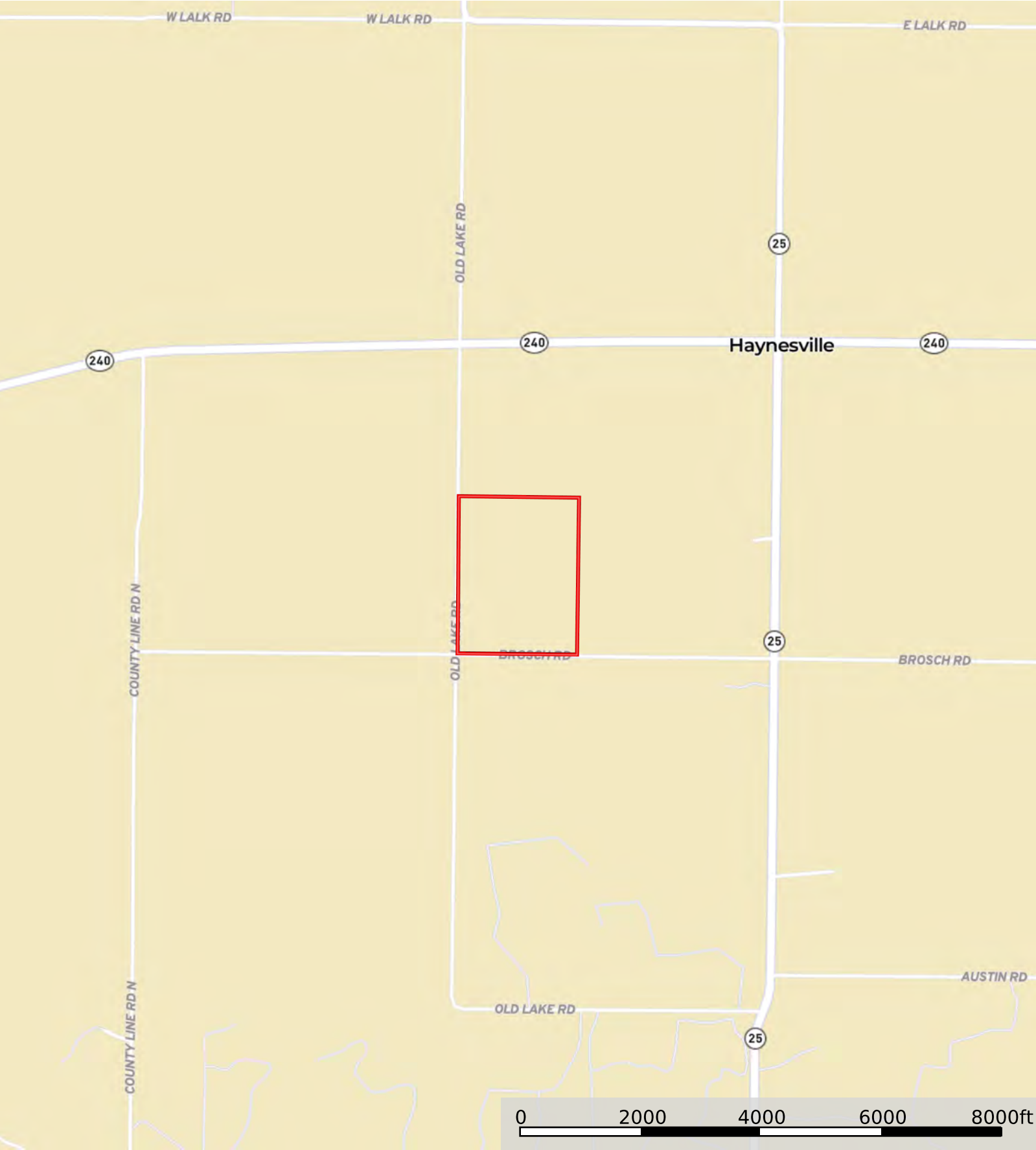


Boundary



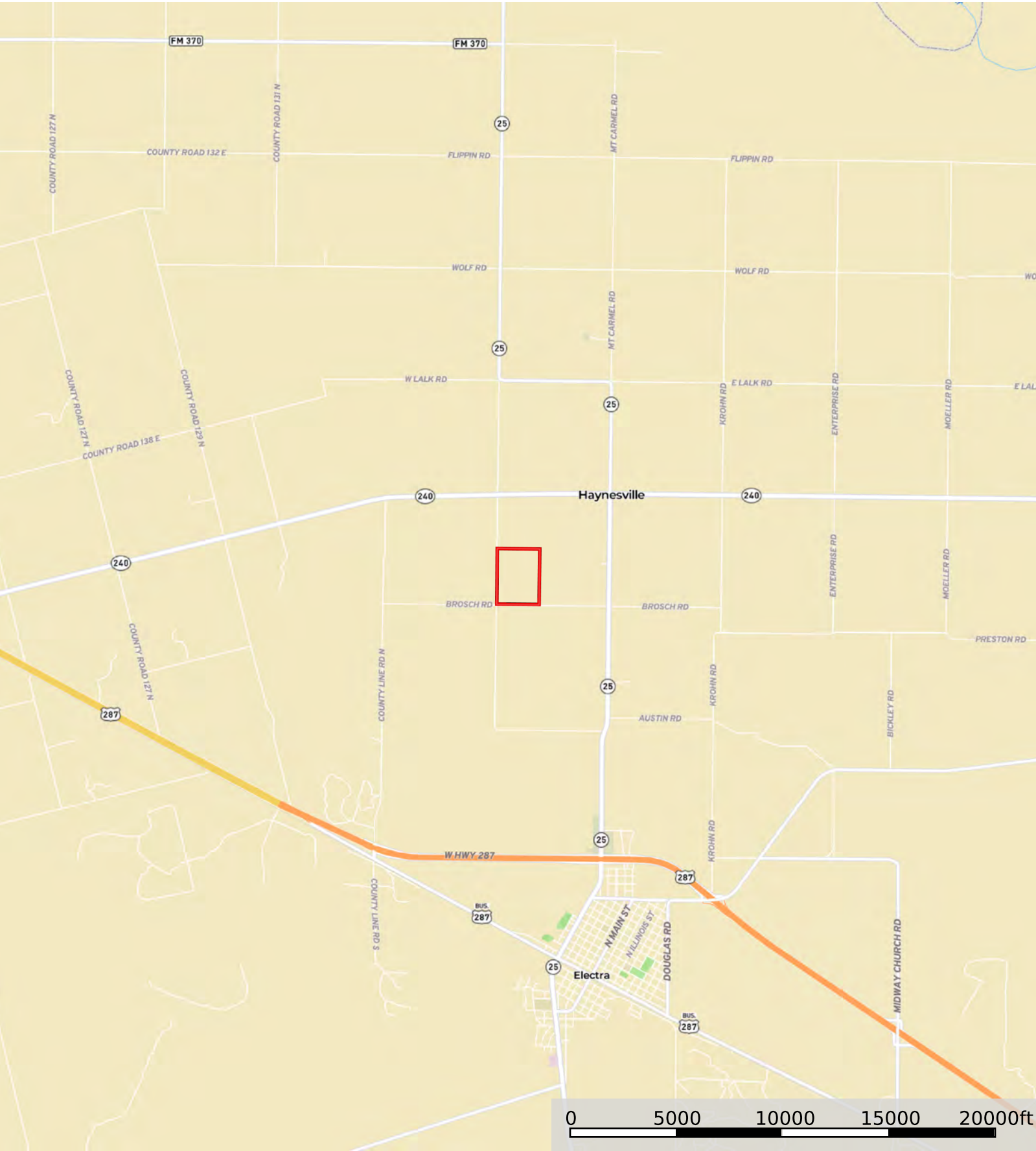
Boundary

Reis Farm
Wichita County, Texas, 121 AC +/-

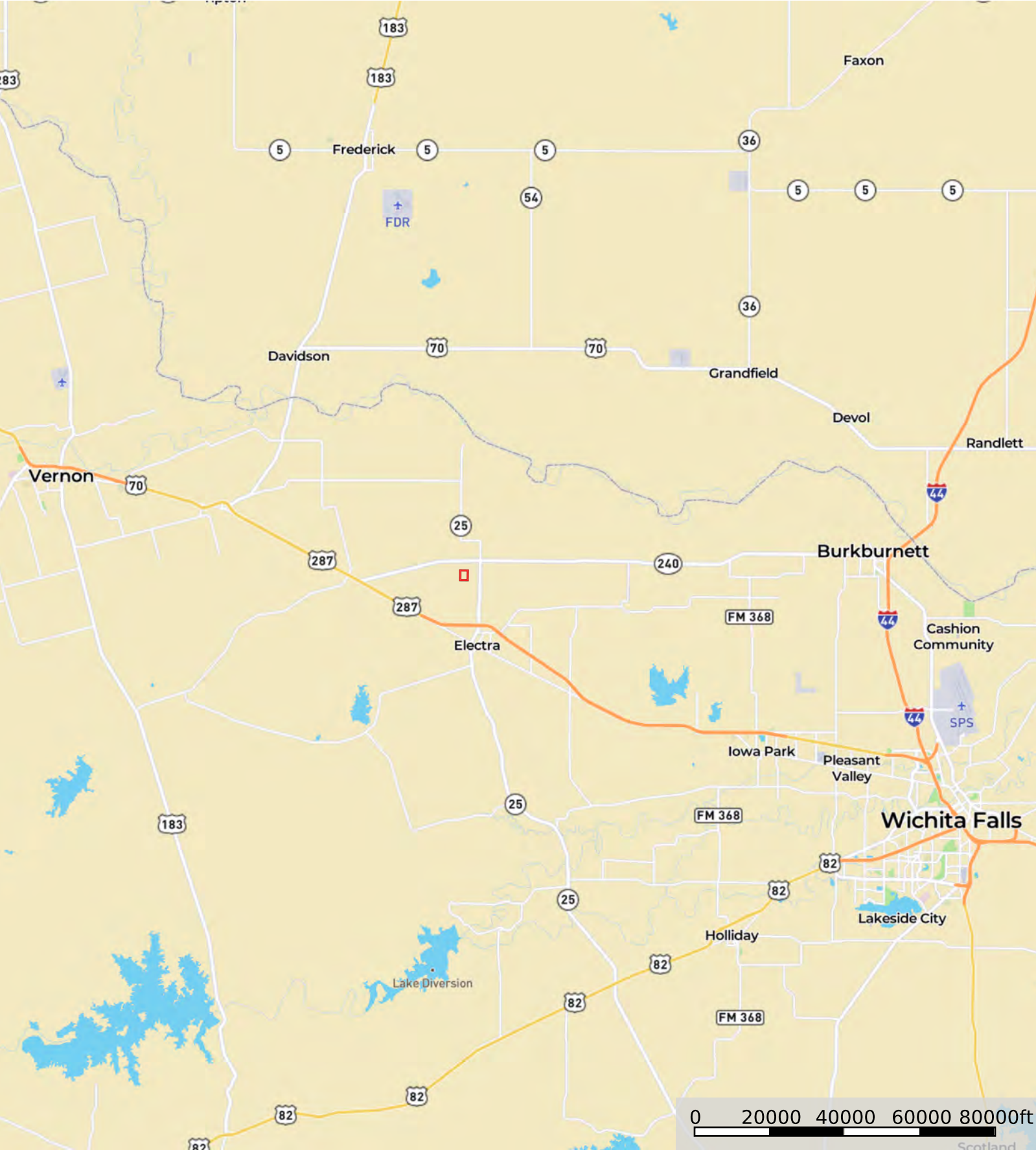


Boundary

Reis Farm
Wichita County, Texas, 121 AC +/-



Boundary



Boundary