

Sparkman-14.50 Acres
Jack County, Texas, 14.5 AC +/-



Boundary

Sparkman-14.50 Acres
Jack County, Texas, 14.5 AC +/-

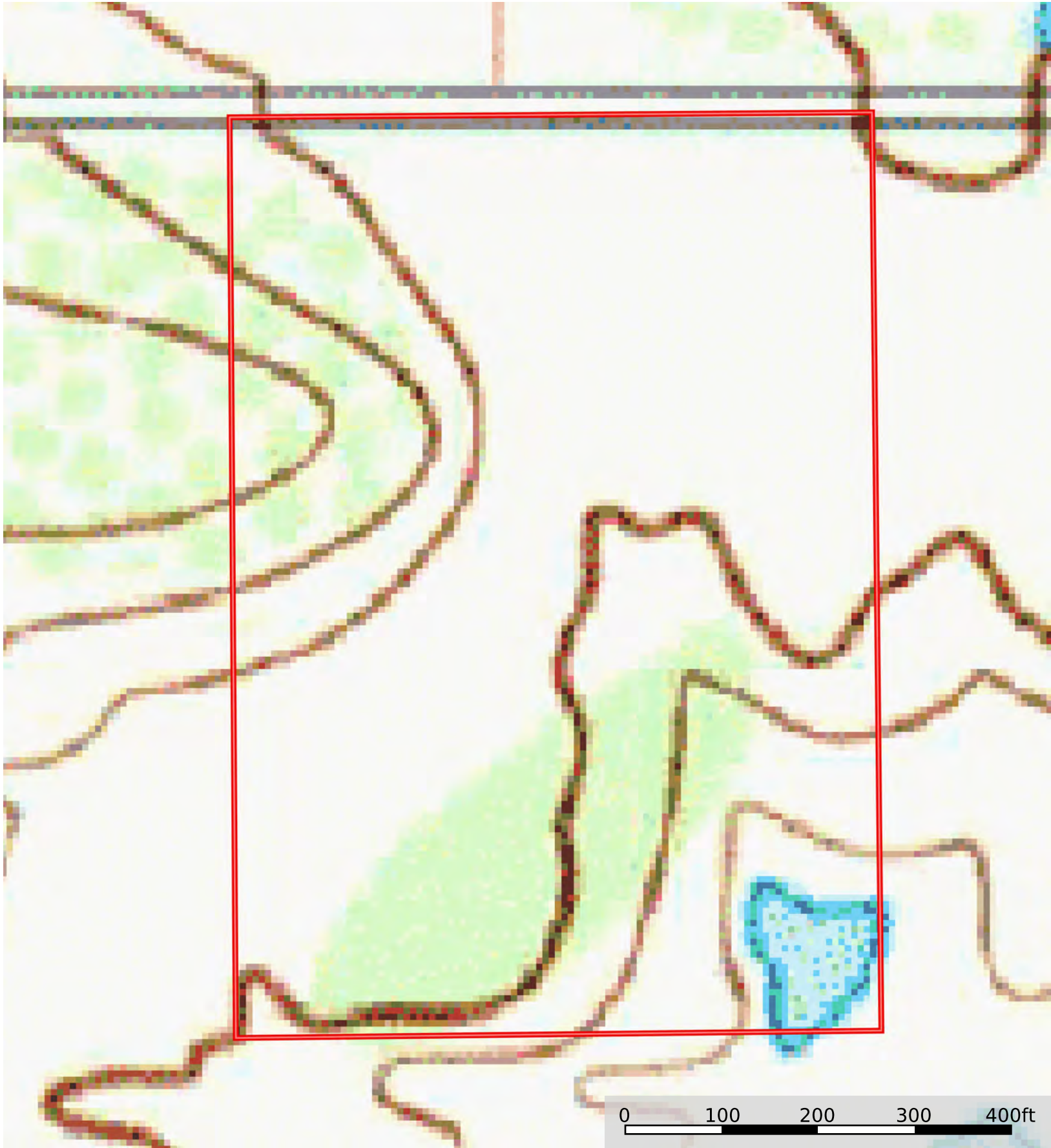


Boundary Stream, Intermittent River/Creek Water Body

Sparkman-14.50 Acres
Jack County, Texas, 14.5 AC +/-

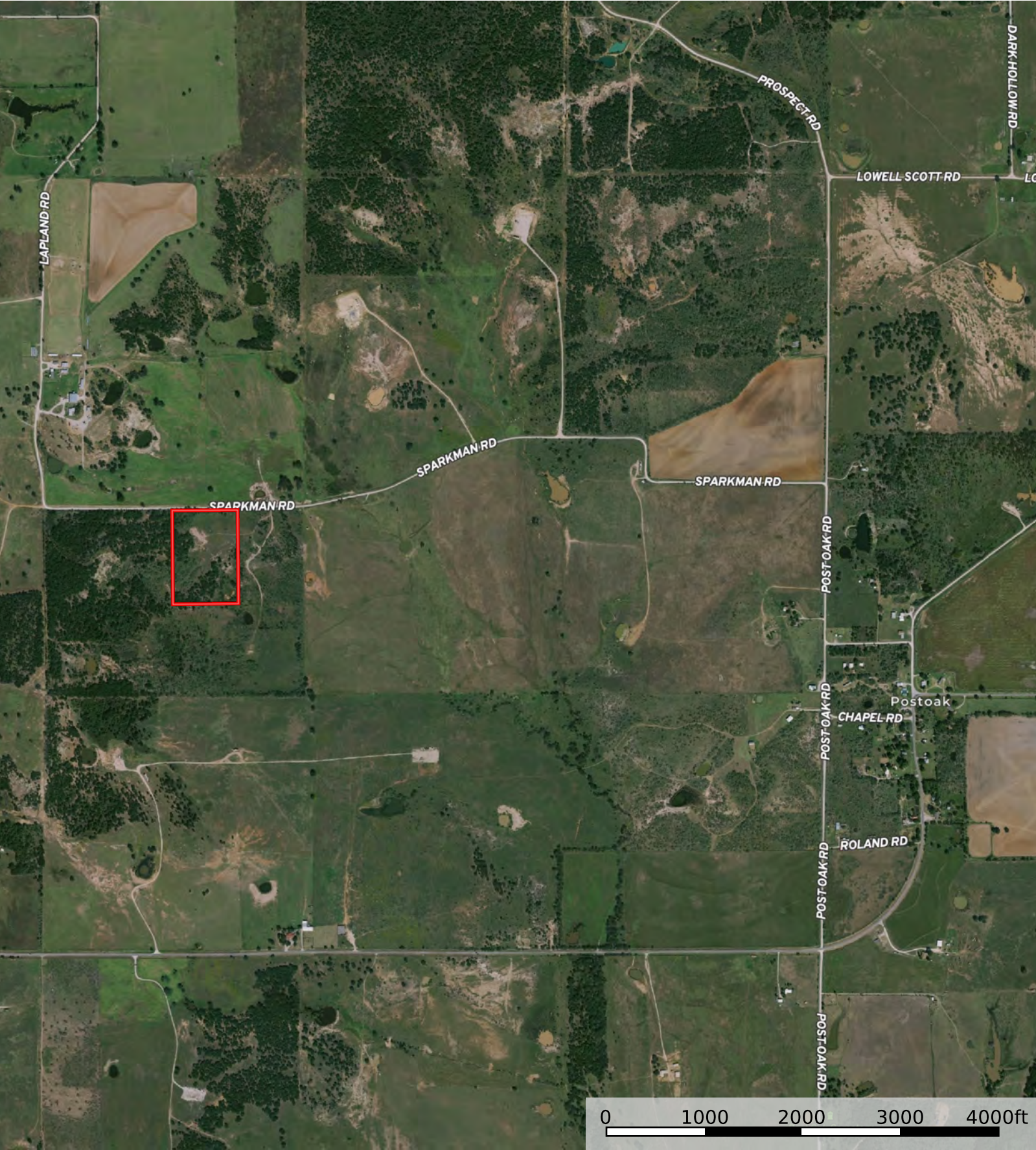


Boundary



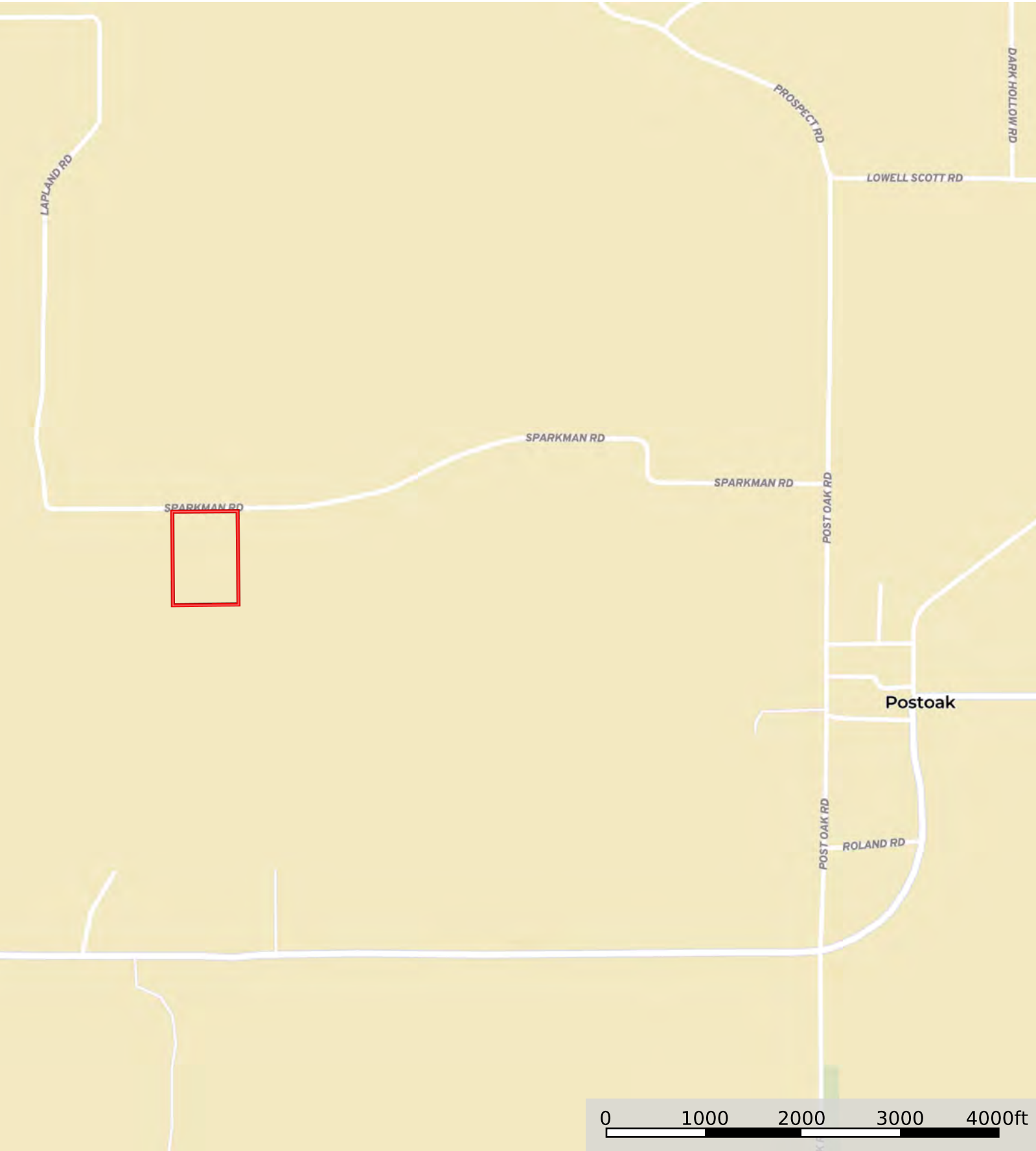
Boundary

Sparkman-14.50 Acres
Jack County, Texas, 14.5 AC +/-



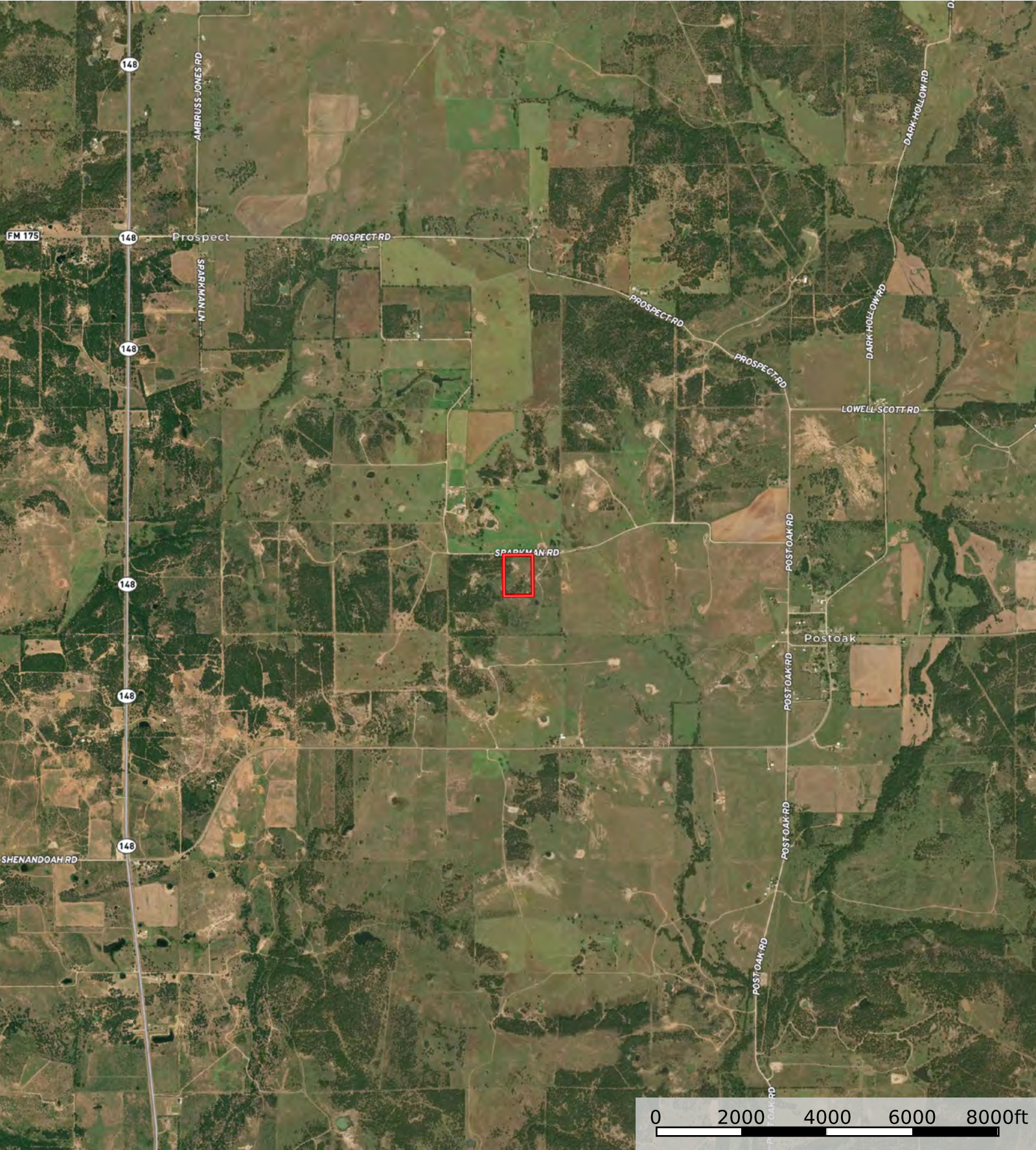
Boundary

Sparkman-14.50 Acres
Jack County, Texas, 14.5 AC +/-



 Boundary

Sparkman-14.50 Acres
Jack County, Texas, 14.5 AC +/-



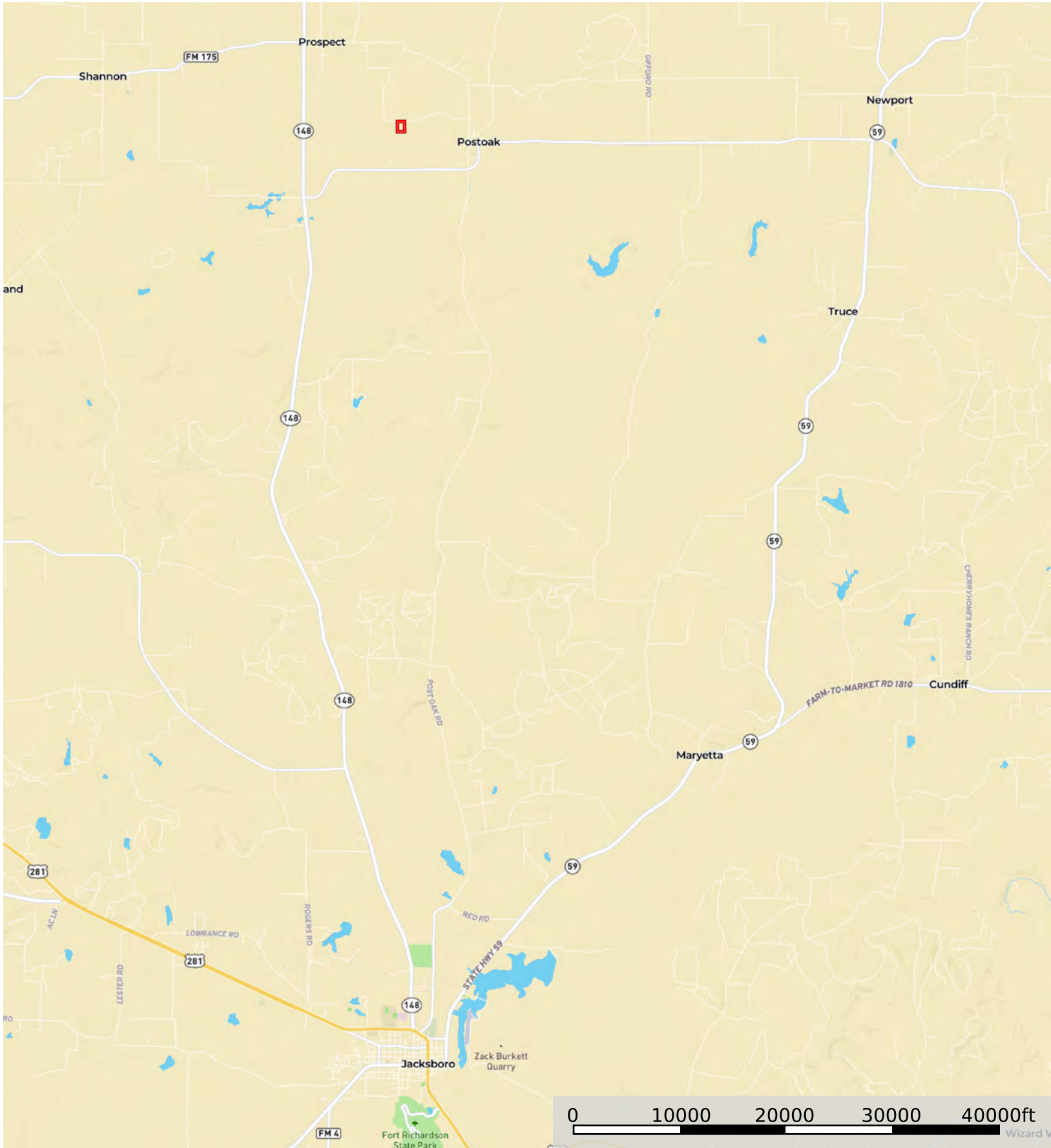
 Boundary

Sparkman-14.50 Acres
Jack County, Texas, 14.5 AC +/-



Boundary

Sparkman-14.50 Acres
Jack County, Texas, 14.5 AC +/-



Boundary