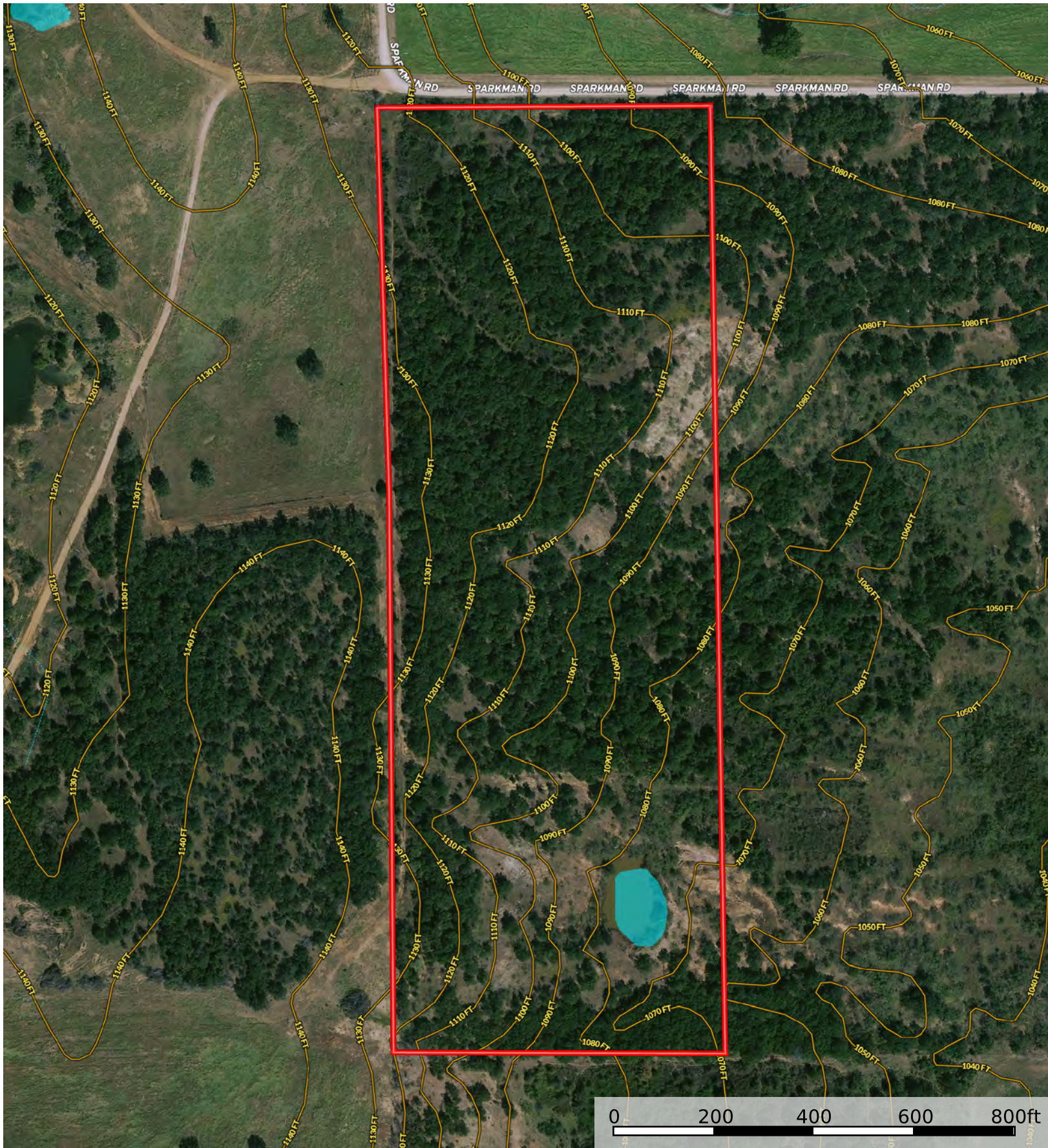
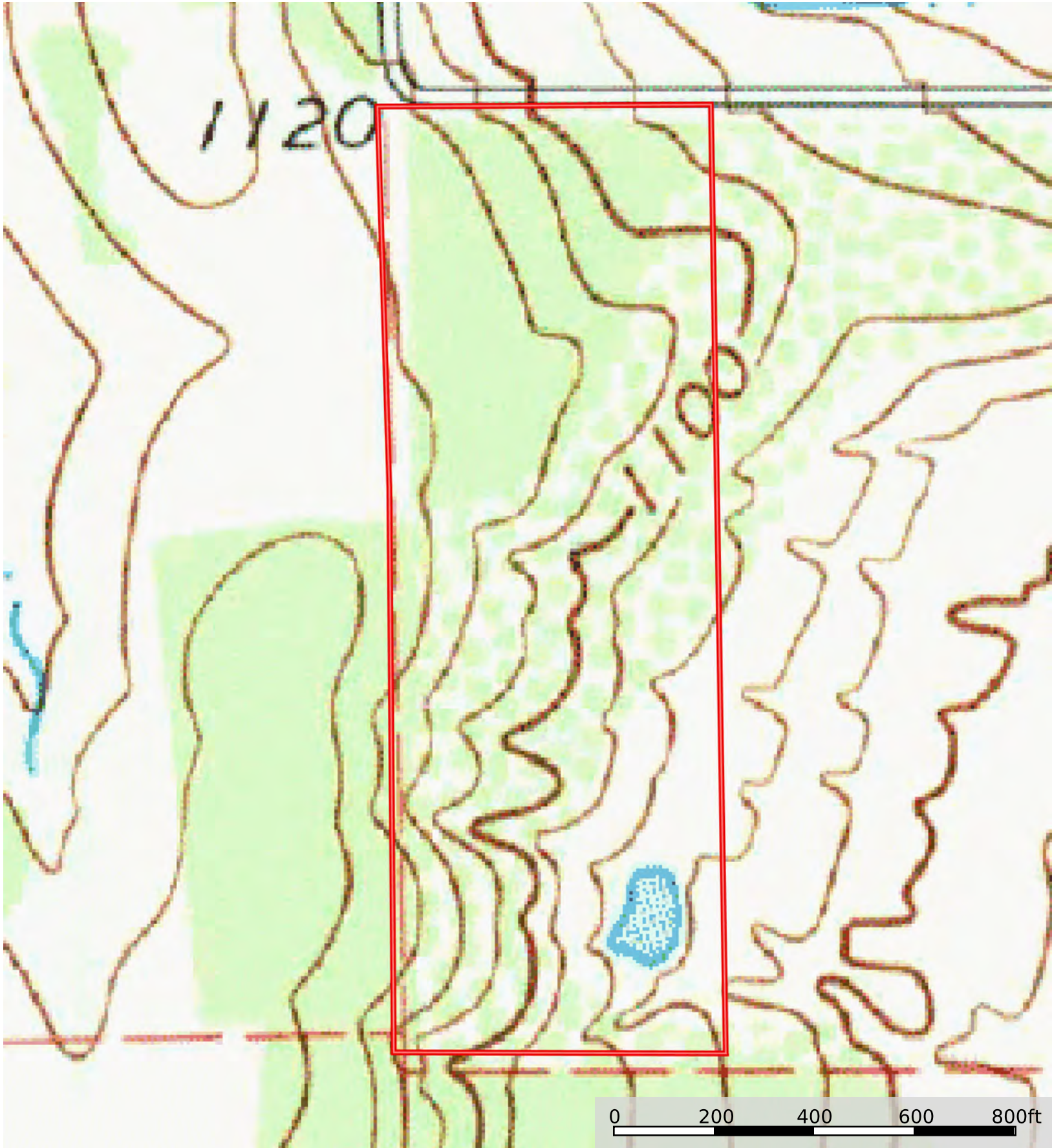


Boundary 1 Stream, Intermittent River/Creek Water Body



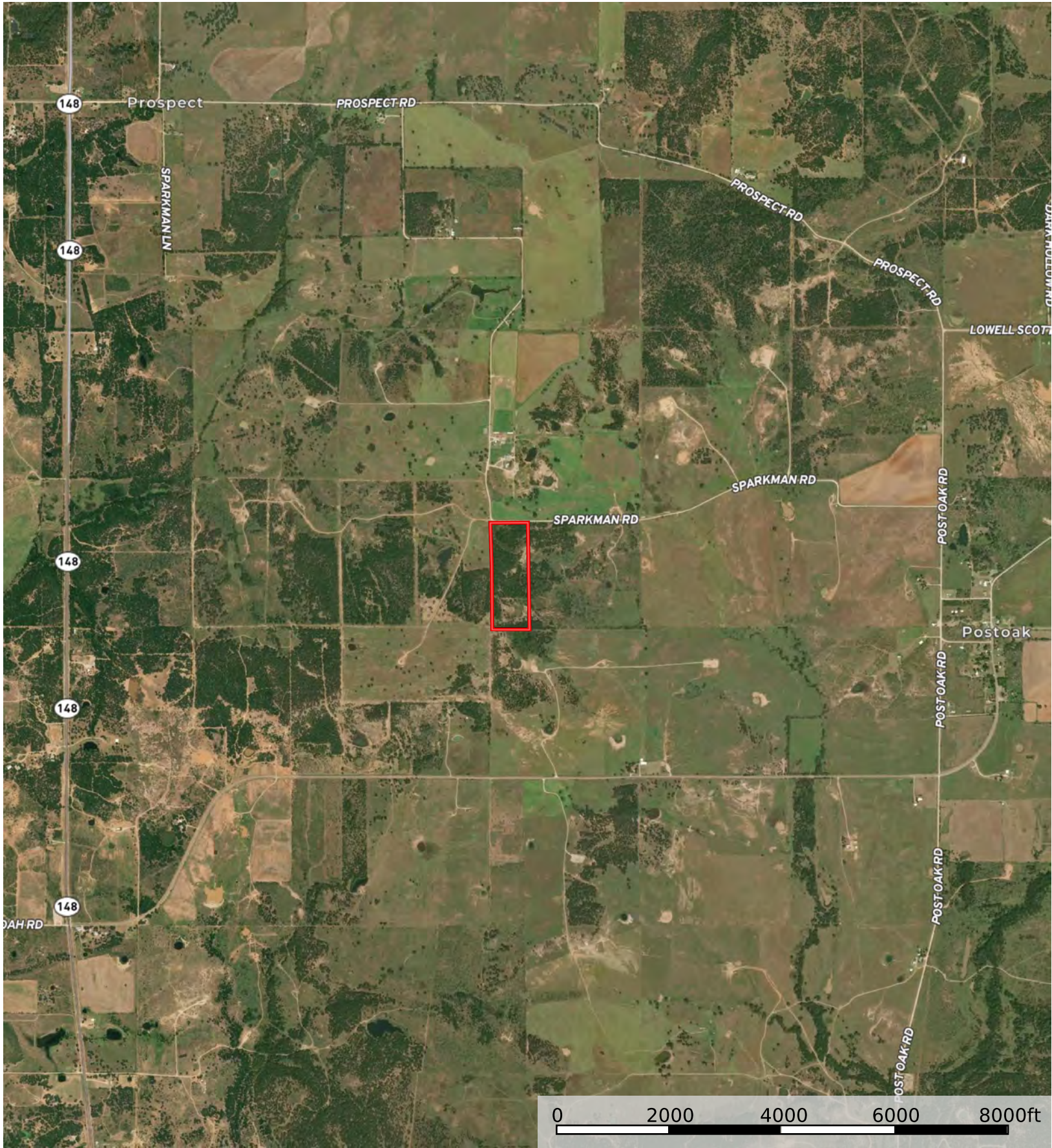
Boundary 1 Stream, Intermittent River/Creek Water Body



Boundary 1

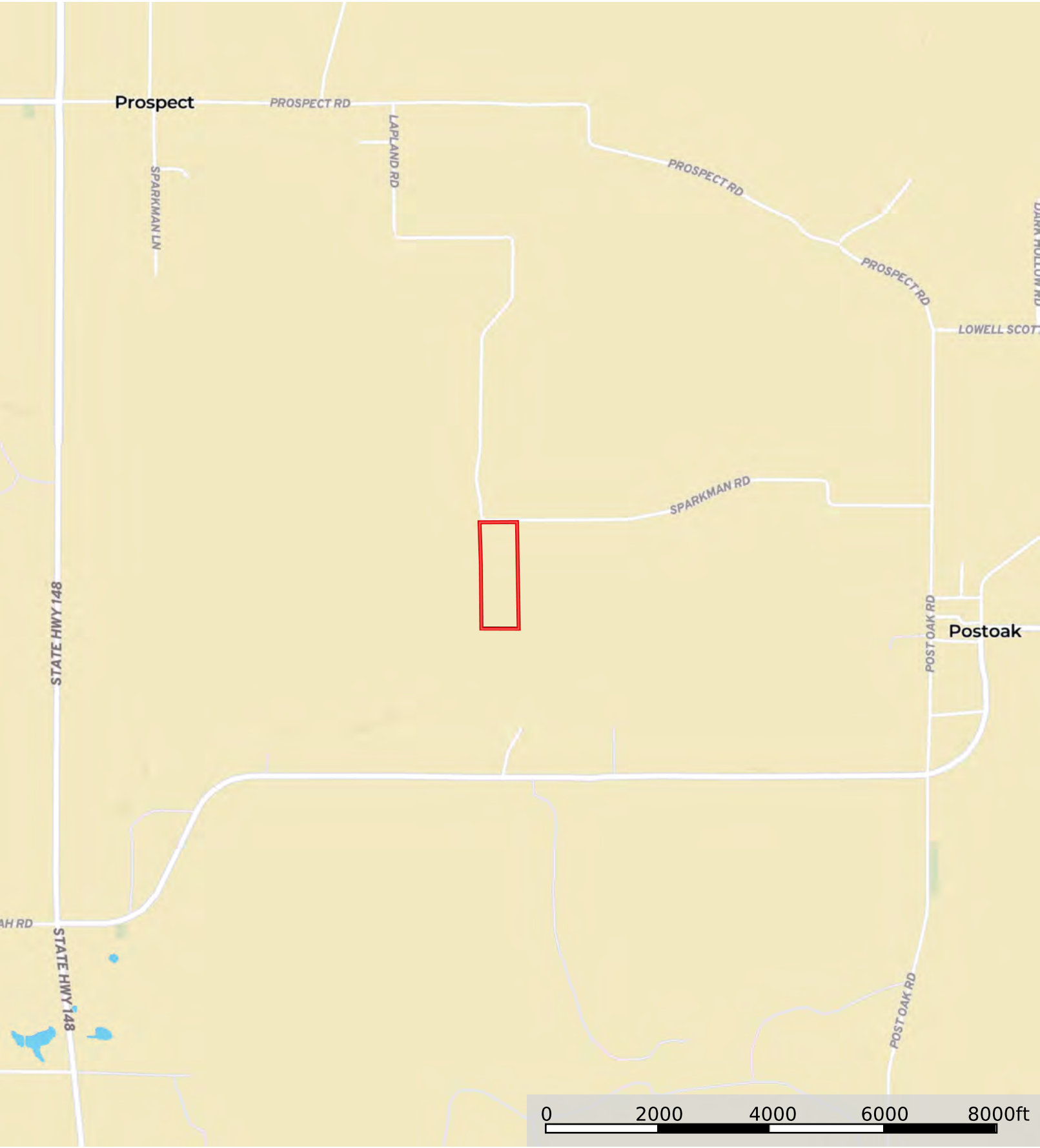



Boundary 1



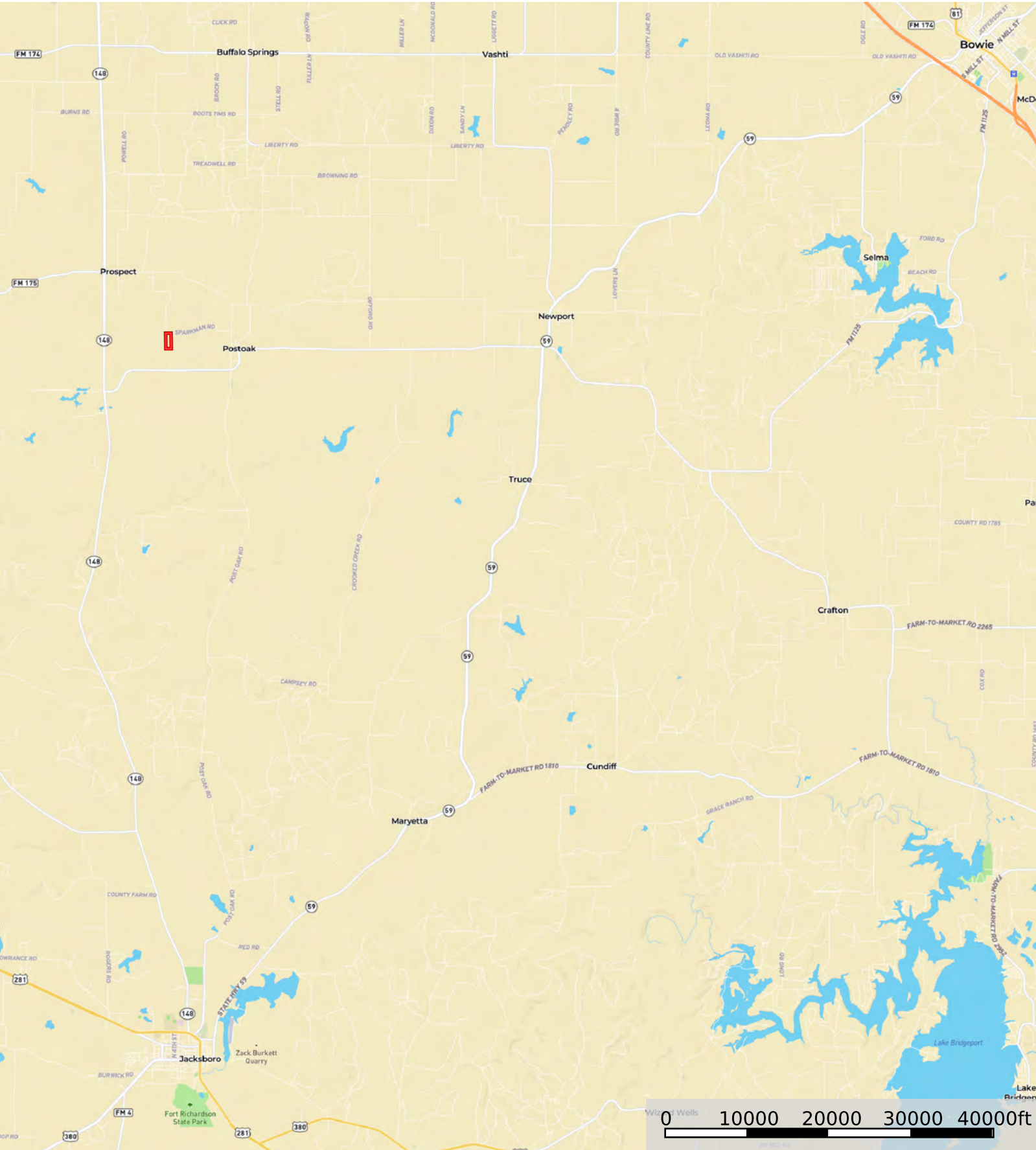
Boundary 1

Sparkman - 29 Acres
Jack County, Texas, 29 AC +/-



 Boundary 1

Sparkman - 29 Acres
Jack County, Texas, 29 AC +/-



Boundary 1

