

**126.45 Acres of Rolling North Florida Beauty - Hay
Fields, Timber & Ponds!**
Vacant SW CR 360A
Madison, FL 32340

\$1,202,275
126.45± Acres
Madison County



**126.45 Acres of Rolling North Florida Beauty – Hay Fields, Timber & Ponds!
Madison, FL / Madison County**

SUMMARY

Address

Vacant SW CR 360A

City, State Zip

Madison, FL 32340

County

Madison County

Type

Farms, Timberland, Horse Property, Recreational Land

Latitude / Longitude

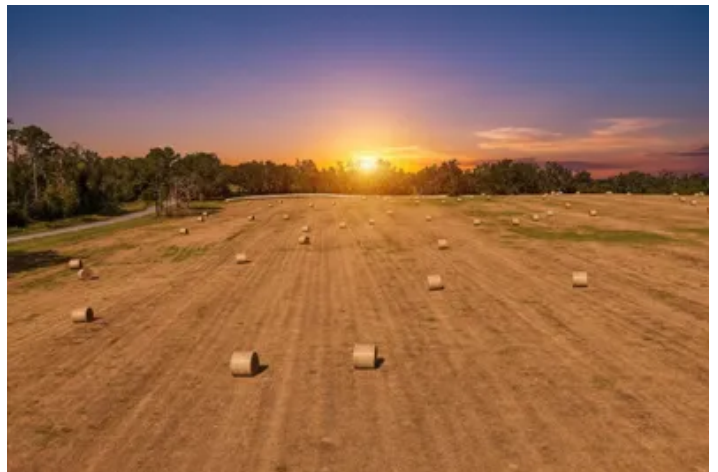
30.443423 / -83.445156

Acreage

126.45

Price

\$1,202,275



126.45 Acres of Rolling North Florida Beauty – Hay Fields, Timber & Ponds! Madison, FL / Madison County

PROPERTY DESCRIPTION

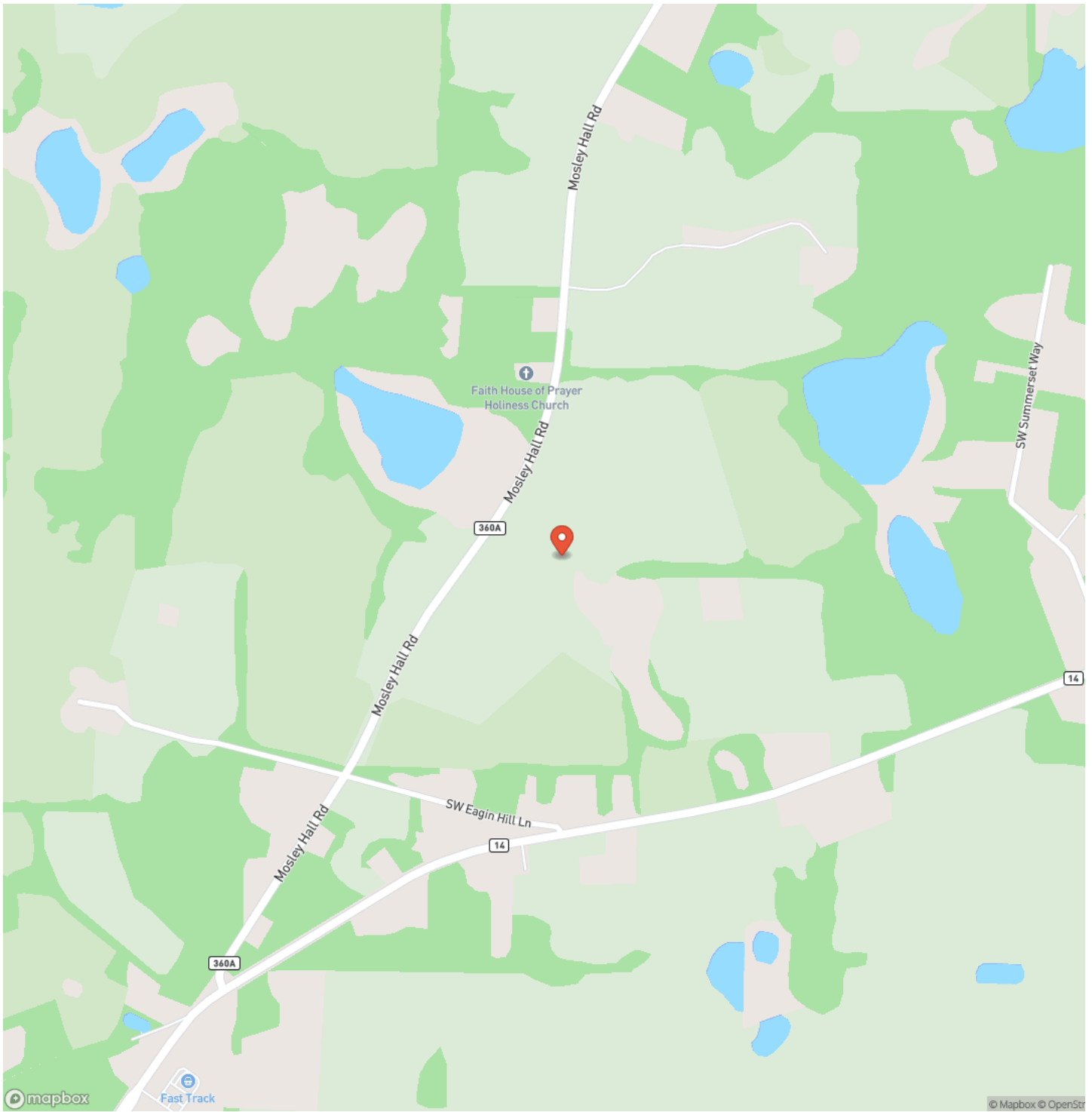
126.45 Acres – Madison County, Florida

- **Prime Location:** Just minutes from **I-10** and **Downtown Madison, FL** – convenient yet private
- **Land Features:**
 - **Producing hay fields** for ongoing agricultural income
 - **Planted pine** with **pine straw contract** in place – steady cash flow opportunity
 - Towering **majestic oaks** creating natural beauty and shade
 - Multiple **scenic ponds**, enhancing wildlife and recreational appeal
 - Rolling terrain with **panoramic views** across the property
- **Recreational Paradise:**
 - Trophy **whitetail deer** hunting
 - Wild **turkey** populations
 - Excellent **duck hunting** habitat
 - Fields ideal for **dove hunting**
- **Endless Potential:**
 - Multiple **homesites** for your dream estate, family compound, or weekend retreat
 - Plenty of room for barns, cabins, or recreational setups
 - Ideal mix of **investment, recreation, and residential possibilities**
- **Accessibility:**
 - **Paved road frontage** for easy year-round access
 - **Multiple entrances** for convenience and future planning
- **Key Highlights:**
 - Income-producing components (**hay, pine straw contract**)
 - **Planted timber** for future income and land value growth
 - Diverse landscape offering both beauty and utility
 - A rare find with **recreation, investment & homesite options all in one property**

126.45 Acres of Rolling North Florida Beauty – Hay Fields, Timber & Ponds!
Madison, FL / Madison County

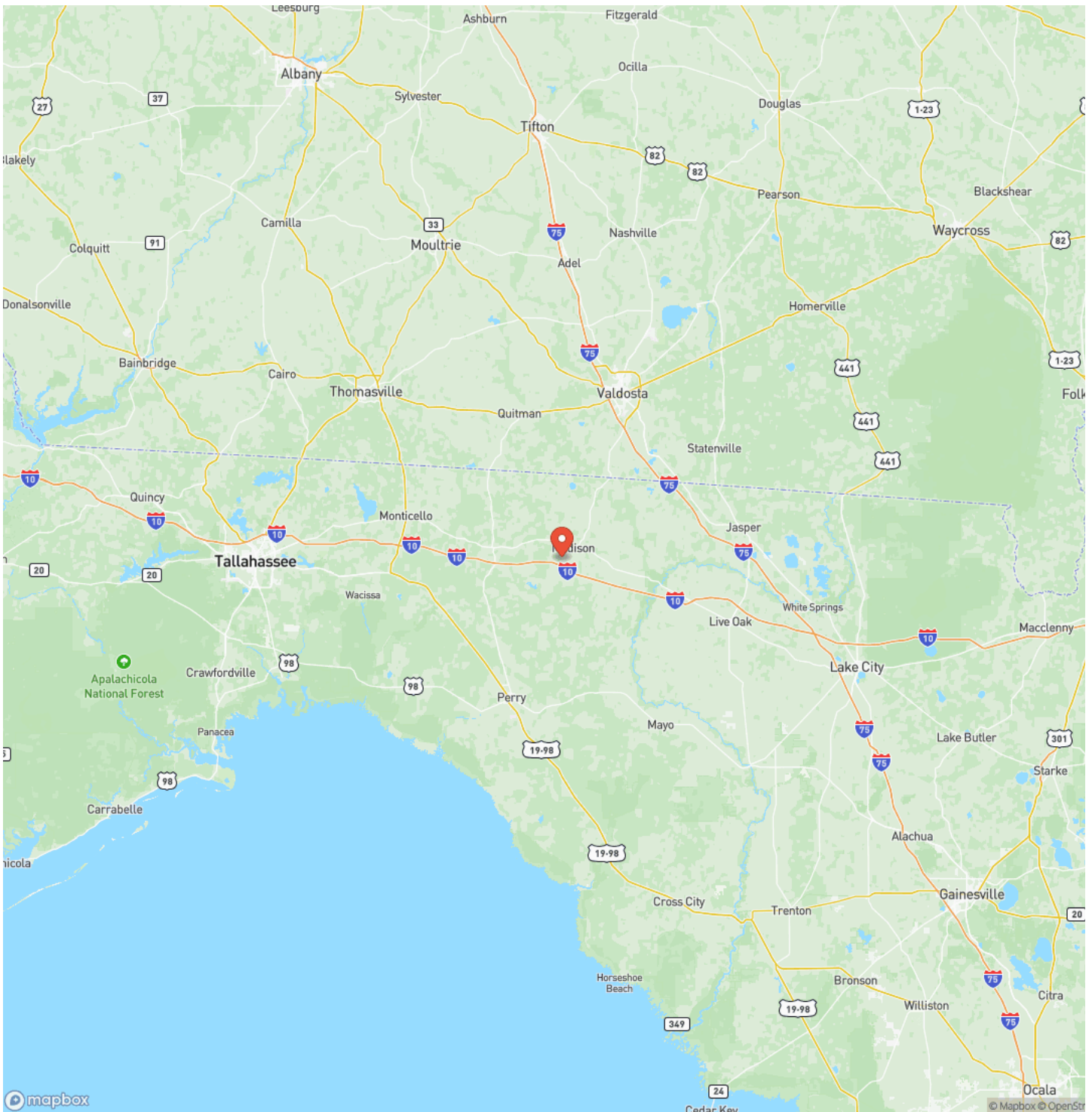


Locator Map



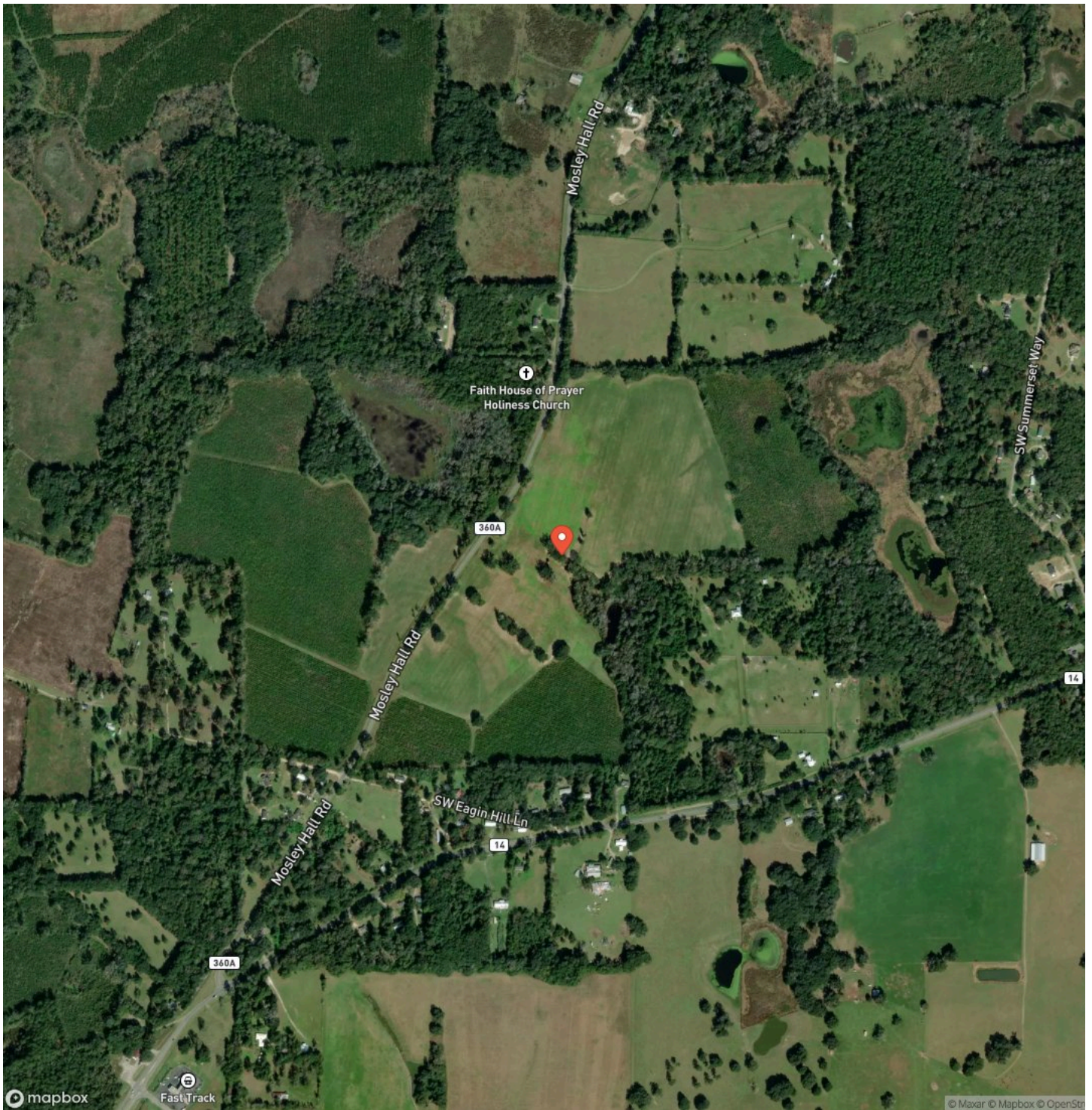
**126.45 Acres of Rolling North Florida Beauty – Hay Fields, Timber & Ponds!
Madison, FL / Madison County**

Locator Map



126.45 Acres of Rolling North Florida Beauty – Hay Fields, Timber & Ponds!
Madison, FL / Madison County

Satellite Map



DISCLAIMERS

Information in this brochure is provided solely for information purposes and does not constitute an offer to sell or advertise real estate outside the states in which broker or agent licensed. The information presented has been obtained from sources deemed to be reliable, but is not guaranteed or warranted by the agent, broker, or the sellers of these properties. This offering is subject to errors, omissions, prior sale, price change, correction or withdrawal from the market without notice. All references to age, square footage, income, expenses, acreage, carrying capacity, and land classification, etc. are approximate. Prospective buyers are chargeable with and expected to conduct their own independent investigation of the information and the property and to rely only on those results. Sellers reserve the right to accept or reject any and all offers without liability to any buyer or cooperating broker.

Maps are provided for illustration purposes only, the accuracy is not warranted. Parcels on interactive maps are not adjusted to match aerial backgrounds. This information is for reference purposes only and is not a legal document. Data maps contain errors. The seller and seller's agent are making known to all potential buyers that there may be variations between the location of the existing fence lines and the legal description of the deeded property. Seller and seller's agent make no warranties with regard to the location of the fence lines in relationship to the deeded property lines, nor does the Seller make any warranties or representations with regard to the specific acreage contained within the fenced property lines. Seller is selling the property in an "as is" condition, which includes the location of the fences as they exist. Boundaries shown on the accompanying maps are approximate, based on county parcel data. The maps are not to scale. The accuracy of the maps is not guaranteed. Prospective buyers are encouraged to verify fence lines, deeded property lines and acreages using a licensed surveyor at their own expense.

Benjamin Jones
190 SW RANGE AVE
Madison, FL 32340
(850) 673-7888
<https://mossyoakproperties.com/>
