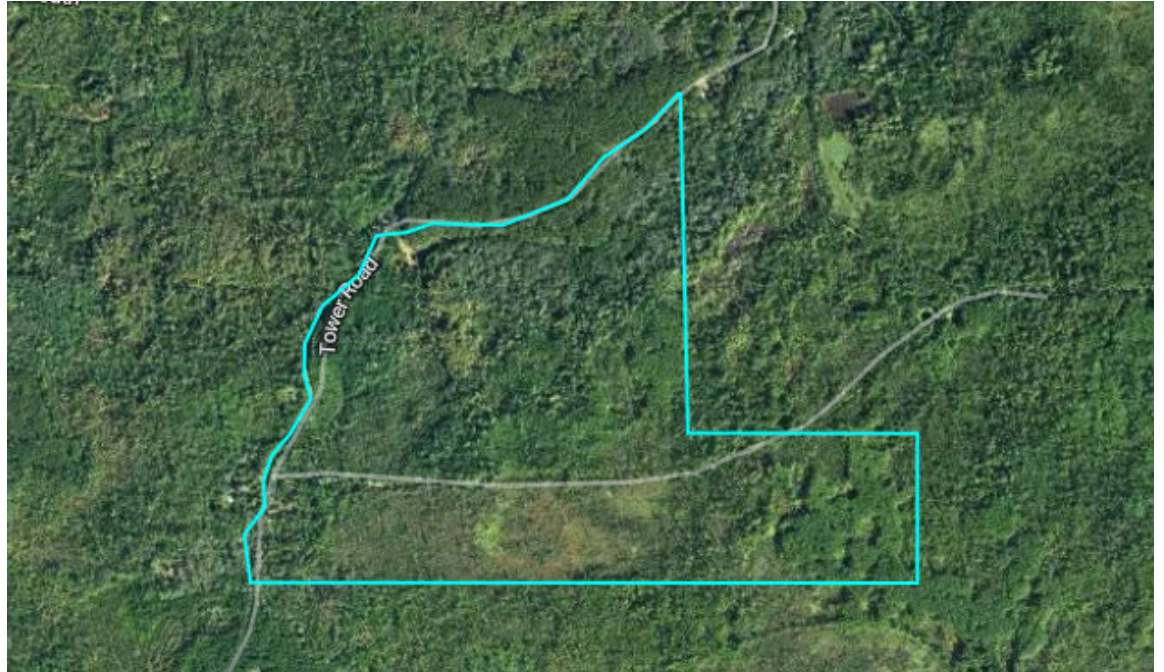


Ben Jones
Broker

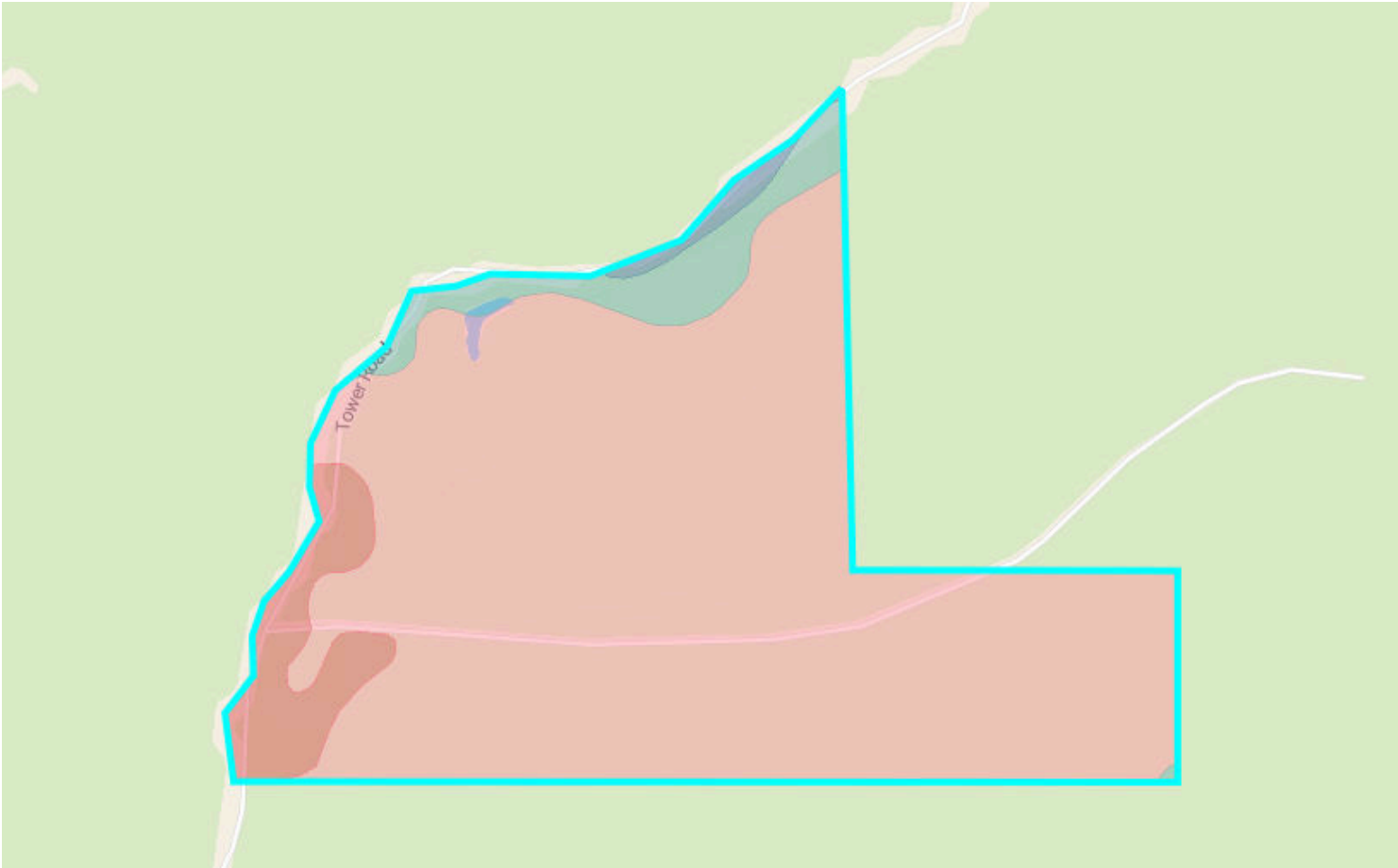


216.2 Acres



Mossy Oak Properties

145 NW Cantey Ave
Madison, FL 32340
850-973-2200



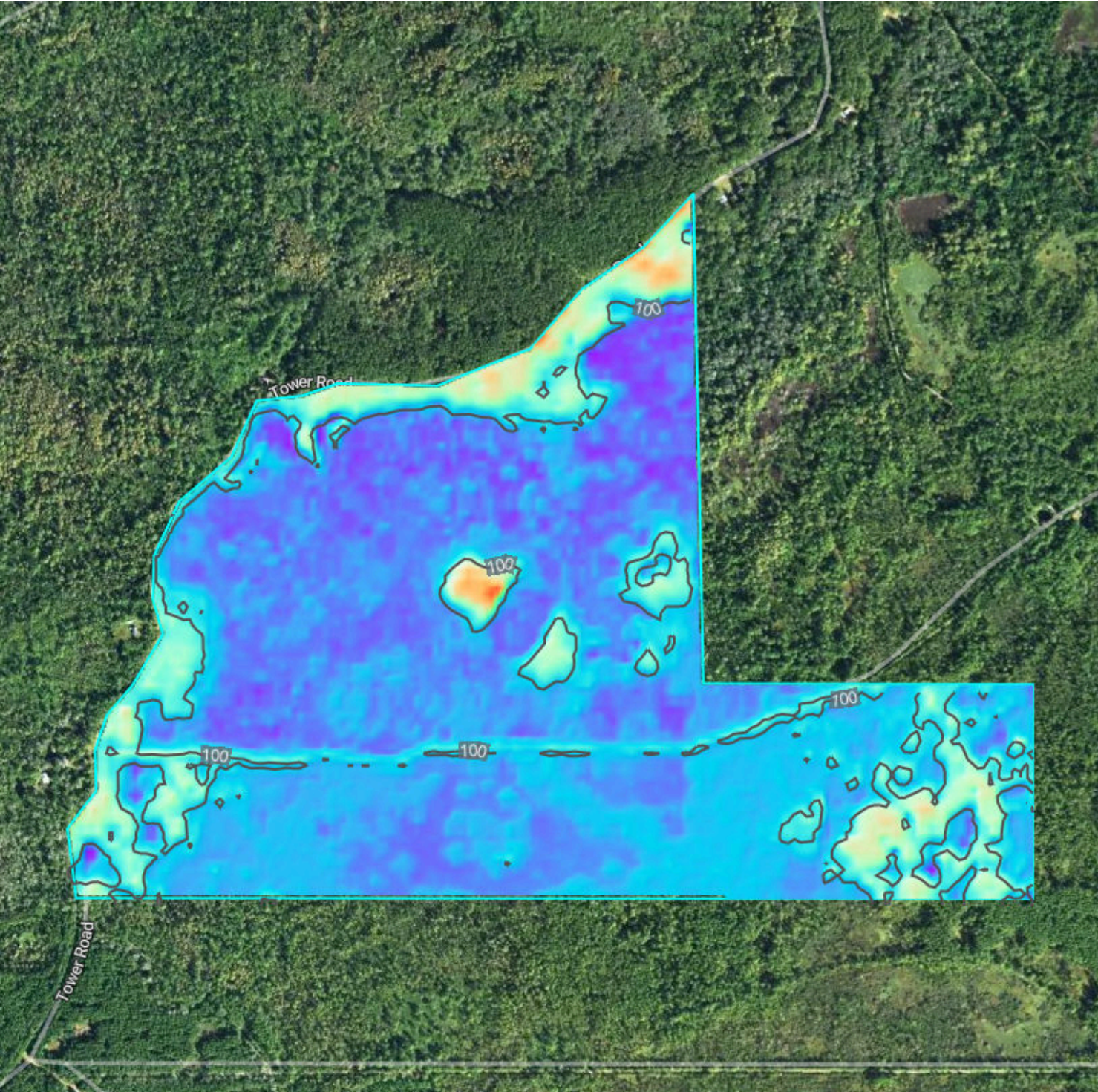
15.6/100 NCCPI

	Code	Soil Description	% of Selection	Acres	Non-IRR Class	IRR Class	NCCPI
●	74	Dorovan and Pamlico soils, depressional	86.5%	187	7w	--	13.2
●	15	Mascotte sand	6.5%	14.1	4w	--	36.2
●	34	Sapelo-Sapelo, wet, sand, 0 to 2 percent slopes	5.9%	12.7	4w	--	26.4
●	2	Albany sand, 0 to 5 percent slopes	1.1%	2.4	3w	--	19.9

Elevation



216.2 Acres, 1 Boundary



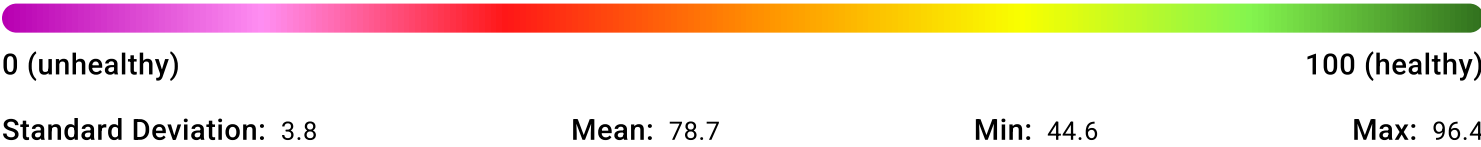
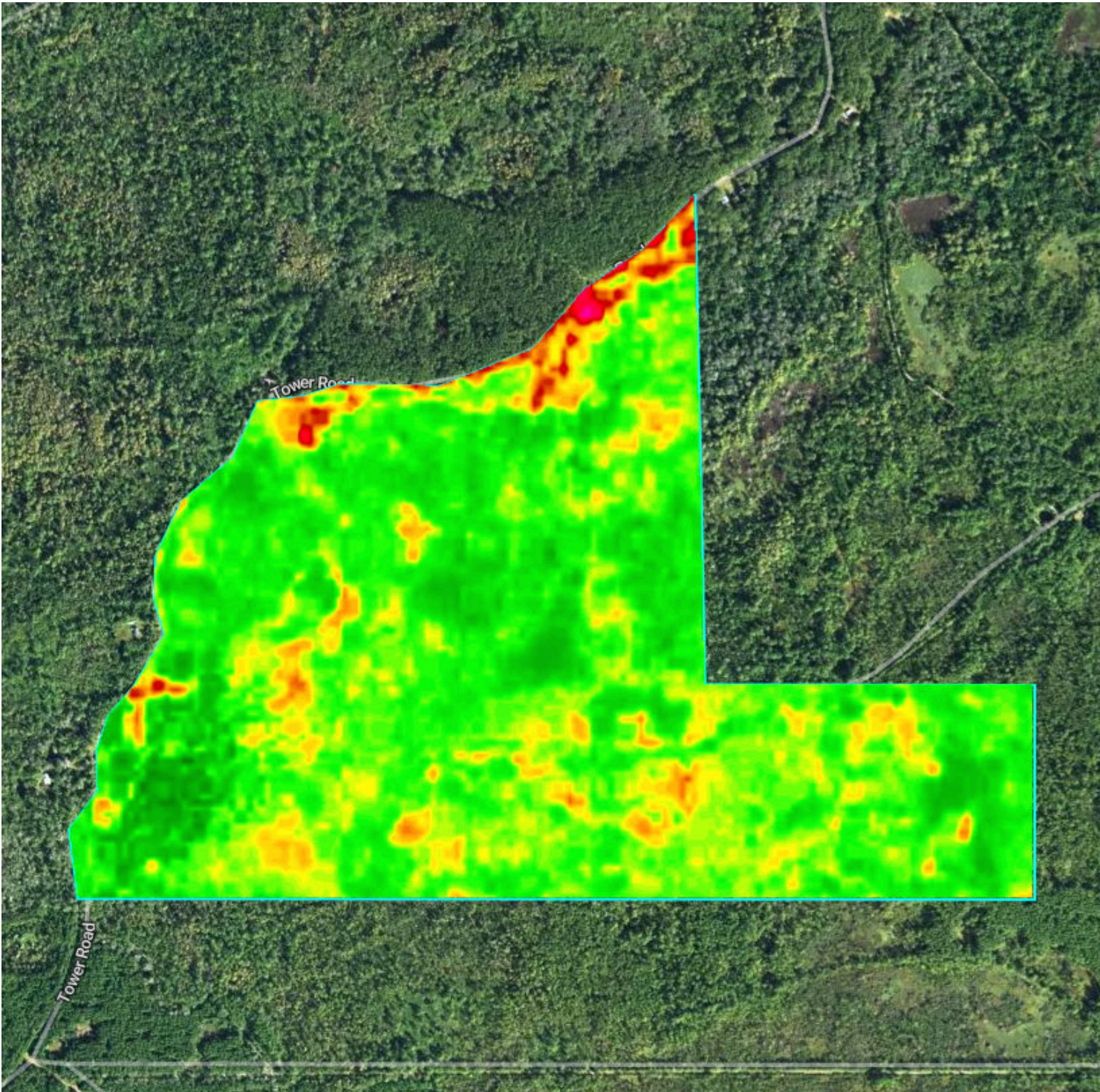
Source: USGS 3 Meter Dem	Interval: 10 feet	Range: 4.6 feet	Min: 98.5 feet	Max: 103.1 feet
		Slope: 0.6%	Min: 0%	Max: 5.2%

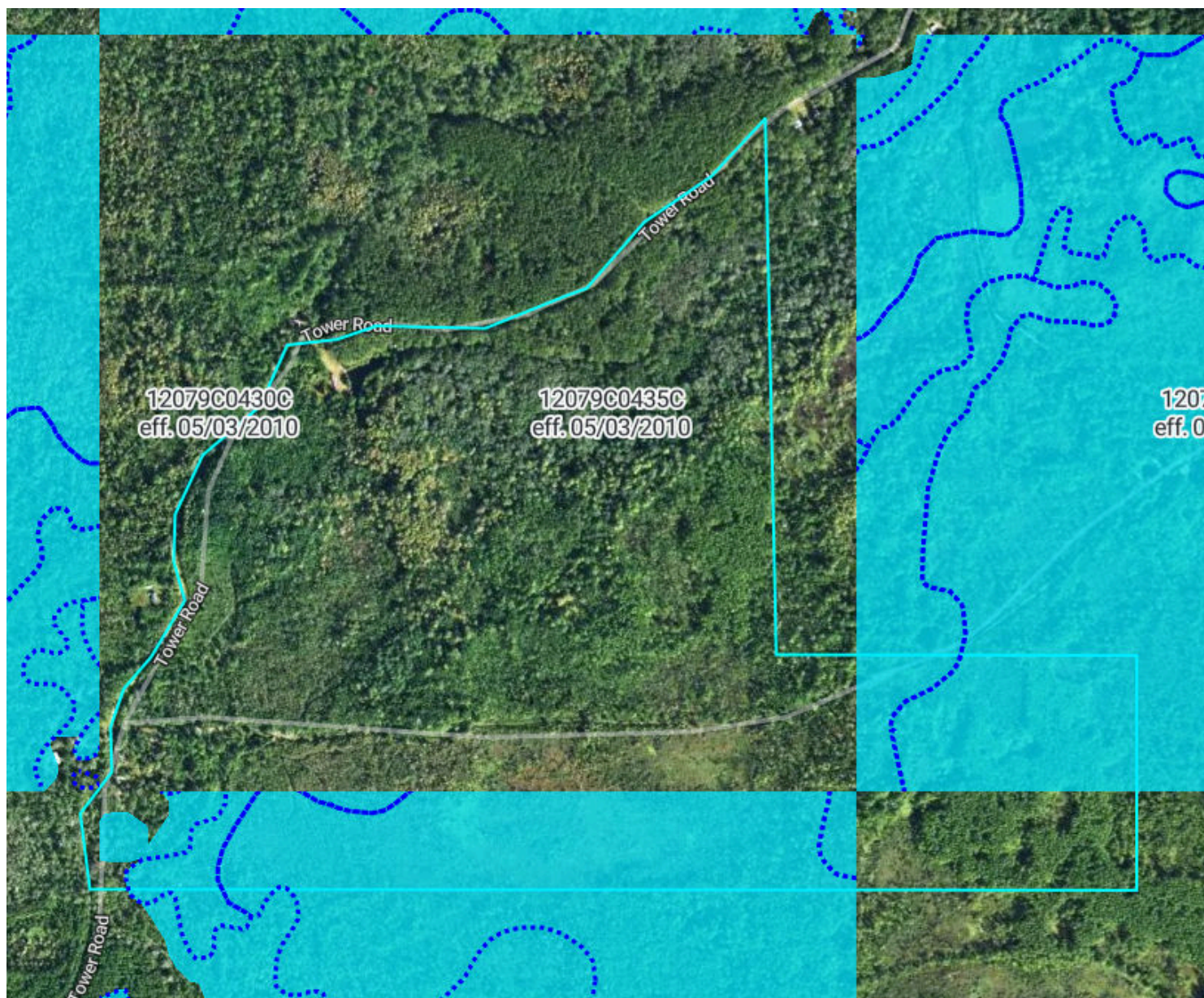
Vegetation Index











216.2 Acres, 1 Boundary

2024





Flood Zone Hazard

-  0.2% annual flood hazard
-  1% annual flood hazard
-  Future 1% annual flood hazard
-  Increased risk due to levee
-  Reduced risk due to levee
-  Regulatory Floodway
-  Special Floodway
-  Wetlands