

30.68 Acres of Prime Vacant Land in Madison - Ideal for Investment or Development!
Vacant SW Jeanette Circle
Madison, FL 32340

\$249,900
30.680± Acres
Madison County



30.68 Acres of Prime Vacant Land in Madison - Ideal for Investment or Development!
Madison, FL / Madison County

SUMMARY

Address

Vacant SW Jeanette Circle

City, State Zip

Madison, FL 32340

County

Madison County

Type

Undeveloped Land, Hunting Land, Business Opportunity,
Recreational Land, Commercial

Latitude / Longitude

30.462039 / -83.425434

Acreage

30.680

Price

\$249,900

Property Website

<https://www.mossyoakproperties.com/property/30-68-acres-of-prime-vacant-land-in-madison-ideal-for-investment-or-development-madison-florida/77279/>



30.68 Acres of Prime Vacant Land in Madison - Ideal for Investment or Development!

Madison, FL / Madison County

PROPERTY DESCRIPTION

30.68 Acres of Prime Vacant Land in Madison - Ideal for Investment or Development! Parcels 28-1N-09-5083-000-000 & 28-1N-09-5083-001-000

This 30.68-acre parcel offers a fantastic opportunity for investors and developers in a highly sought-after location. Situated within the city limits of Madison, this property is surrounded by land owned by the City of Madison, offering both privacy and future growth potential.

The land is high and dry, with no flood zone concerns, and features a mix of pines and hardwoods, providing a beautiful natural setting. An access road is already in place for easy entry to the property, making it ready for immediate development.

Zoned as Incorporated/Res 1, this land is perfect for building housing or rental units. Whether you're planning to create a new neighborhood or develop an income-generating property, this site offers endless potential in a thriving area.

Key Features:

- Size: 30.68 acres
- Location: Within the city limits of Madison, surrounded by City-owned land
- Zoning: Incorporated/Res 1 (Residential 1)
- Terrain: High and dry, no flood zone
- Vegetation: Mix of pines and hardwoods
- Access: Existing access road to the property

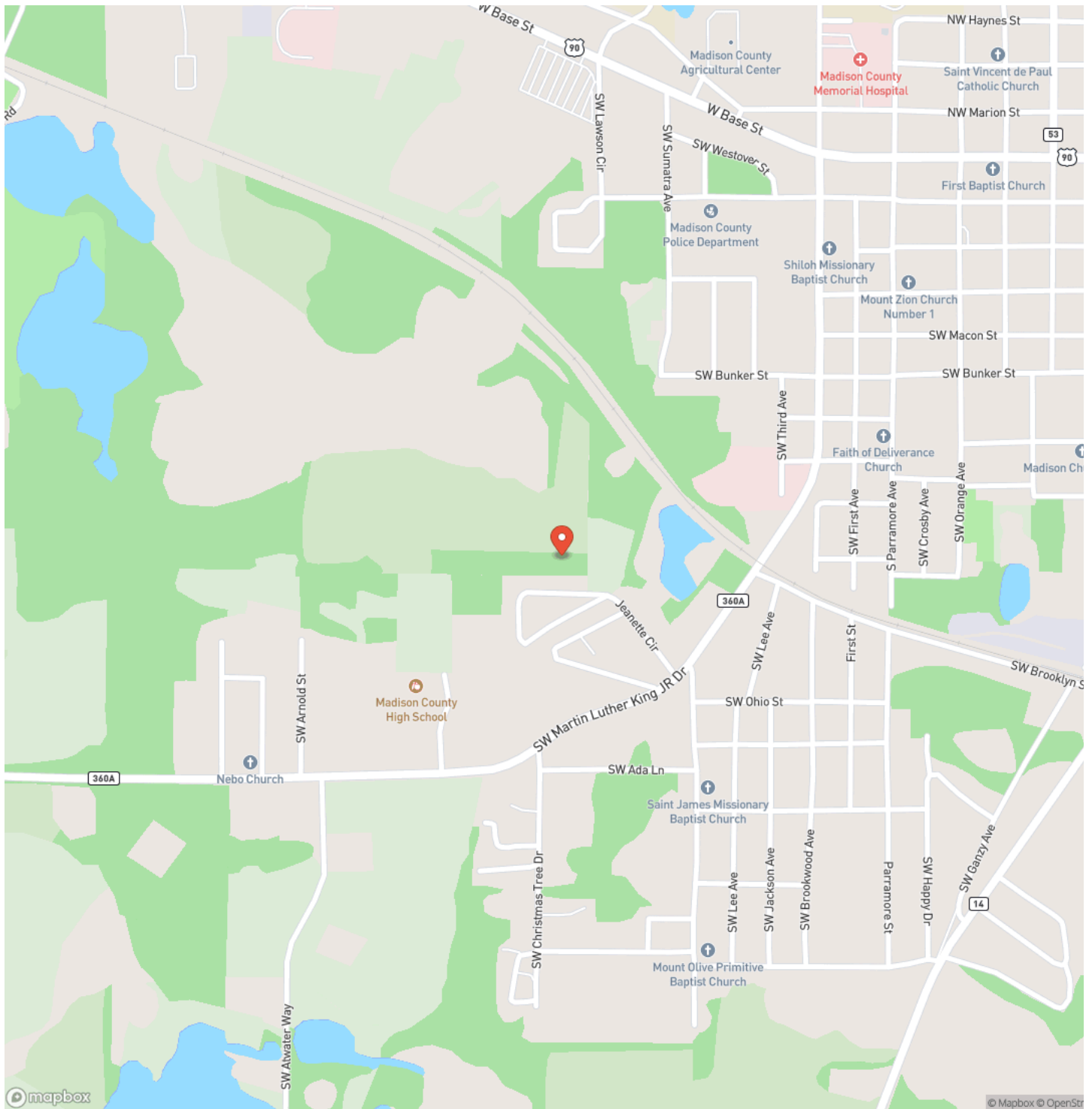
This is an exceptional investment opportunity you won't want to miss!

30.68 Acres of Prime Vacant Land in Madison - Ideal for Investment or Development!
Madison, FL / Madison County



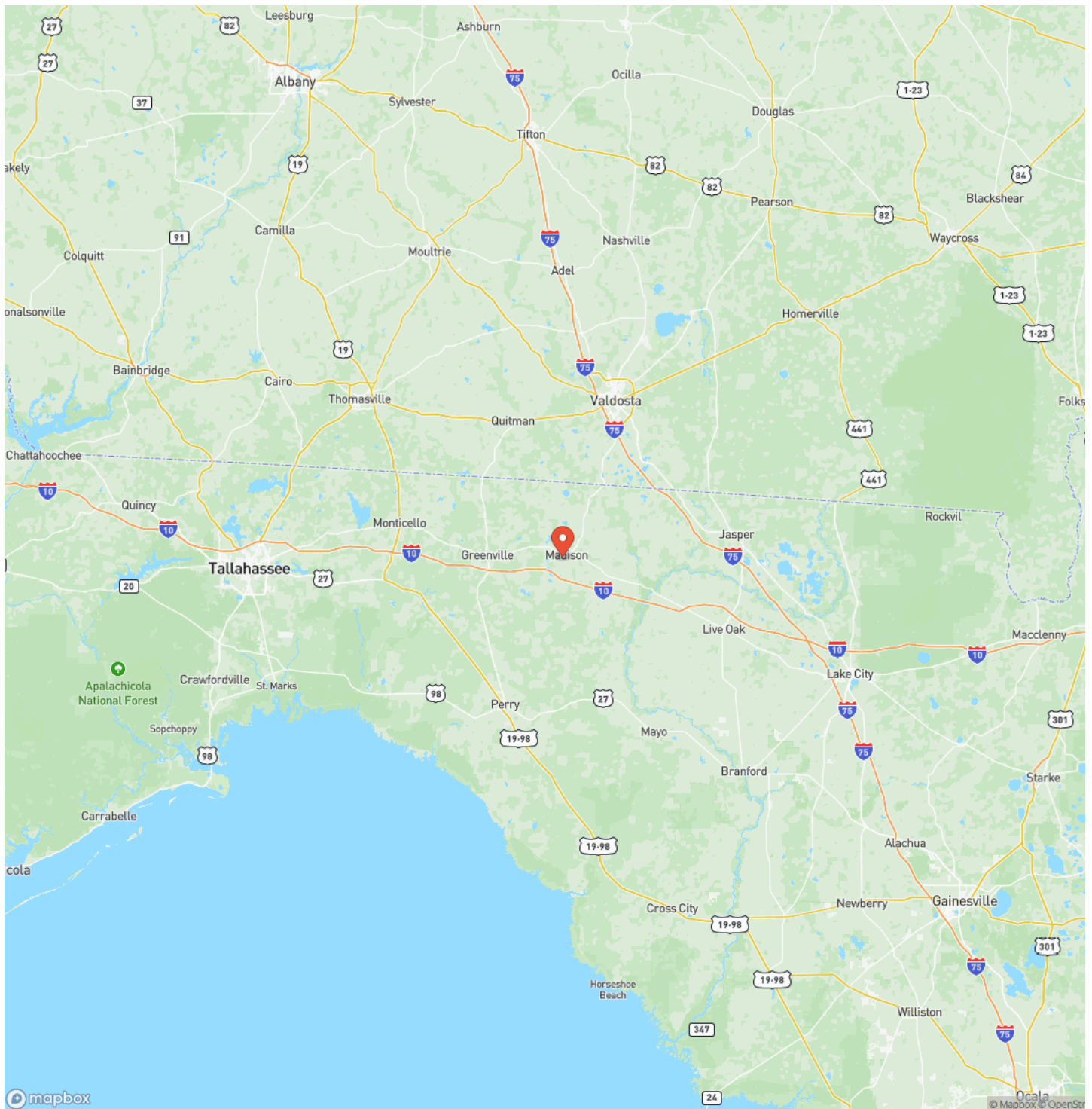
30.68 Acres of Prime Vacant Land in Madison - Ideal for Investment or Development!
Madison, FL / Madison County

Locator Map



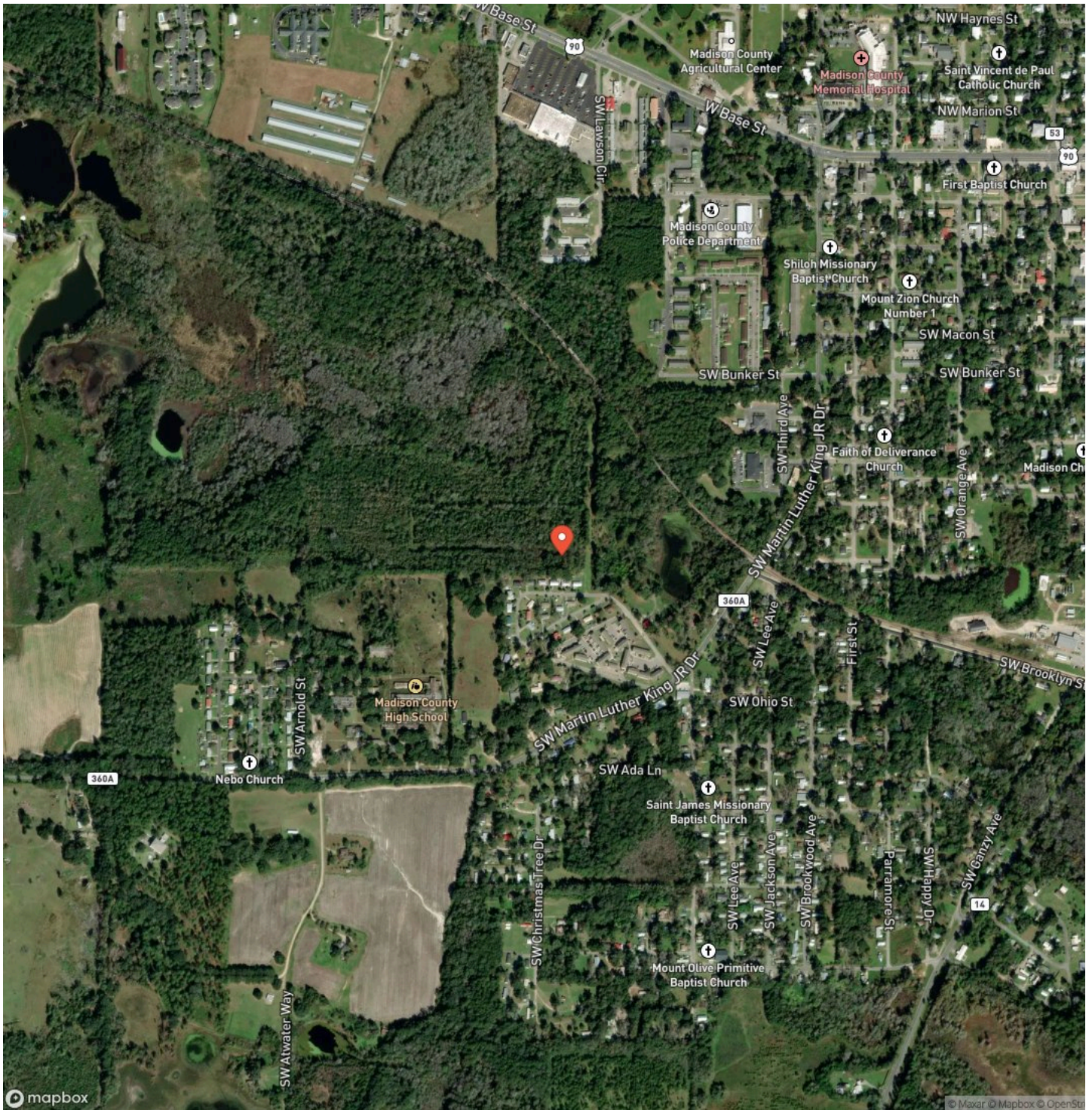
30.68 Acres of Prime Vacant Land in Madison - Ideal for Investment or Development!
Madison, FL / Madison County

Locator Map



30.68 Acres of Prime Vacant Land in Madison - Ideal for Investment or Development!
Madison, FL / Madison County

Satellite Map



30.68 Acres of Prime Vacant Land in Madison - Ideal for Investment or Development!

LISTING REPRESENTATIVE
For more information contact:



Representative
Jessica Groover

Mobile
(850) 464-1303

Email
jgroover@mossyoakproperties.com

Address
145 NW Cantey Avenue

City / State / Zip

NOTES

This image shows a blank sheet of white paper with horizontal ruling lines. The lines are evenly spaced and run across the width of the page. There are no margins, text, or other markings on the paper.

This image shows a single sheet of white paper with horizontal blue ruling lines. The lines are evenly spaced and run across the width of the page. There are no margins, text, or other markings on the paper.



MORE INFO ONLINE:
MossyOakProperties.com

DISCLAIMERS

Information in this brochure is provided solely for information purposes and does not constitute an offer to sell or advertise real estate outside the states in which broker or agent licensed. The information presented has been obtained from sources deemed to be reliable, but is not guaranteed or warranted by the agent, broker, or the sellers of these properties. This offering is subject to errors, omissions, prior sale, price change, correction or withdrawal from the market without notice. All references to age, square footage, income, expenses, acreage, carrying capacity, and land classification, etc. are approximate. Prospective buyers are chargeable with and expected to conduct their own independent investigation of the information and the property and to rely only on those results. Sellers reserve the right to accept or reject any and all offers without liability to any buyer or cooperating broker.

Maps are provided for illustration purposes only, the accuracy is not warranted. Parcels on interactive maps are not adjusted to match aerial backgrounds. This information is for reference purposes only and is not a legal document. Data maps contain errors. The seller and seller's agent are making known to all potential buyers that there may be variations between the location of the existing fence lines and the legal description of the deeded property. Seller and seller's agent make no warranties with regard to the location of the fence lines in relationship to the deeded property lines, nor does the Seller make any warranties or representations with regard to the specific acreage contained within the fenced property lines. Seller is selling the property in an "as is" condition, which includes the location of the fences as they exist. Boundaries shown on the accompanying maps are approximate, based on county parcel data. The maps are not to scale. The accuracy of the maps is not guaranteed. Prospective buyers are encouraged to verify fence lines, deeded property lines and acreages using a licensed surveyor at their own expense.

Mossy Oak Properties Southern Land & Homes, LLC
145 NW Cantey Avenue
Madison, FL 32340
(850) 973-2200
MossyOakProperties.com

