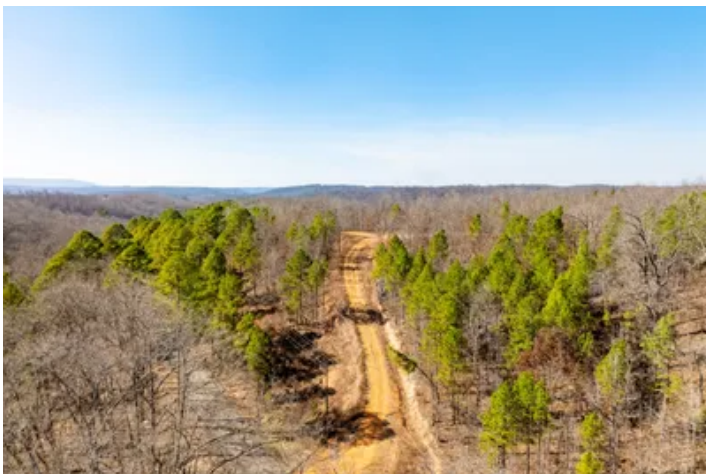


Breathtaking 204 +/- Acres with Hilltop Meadow & Incredible Views in Cushman, AR
Collietown Road
Cushman, AR 72526

\$598,500
204± Acres
Independence County



Breathtaking 204 +/- Acres with Hilltop Meadow & Incredible Views in Cushman, AR Cushman, AR / Independence County

SUMMARY

Address

Collietown Road

City, State Zip

Cushman, AR 72526

County

Independence County

Type

Hunting Land, Recreational Land

Latitude / Longitude

35.874564 / -91.752895

Acreage

204

Price

\$598,500

Property Website

<https://www.mossyoakproperties.com/property/breathtaking-204-acres-with-hilltop-meadow-incredible-views-in-cushman-ar/independence/arkansas/99297/>



Breathtaking 204 +/- Acres with Hilltop Meadow & Incredible Views in Cushman, AR Cushman, AR / Independence County

PROPERTY DESCRIPTION

204 +/- Acres of Breathtaking Land in Cushman, Arkansas - Just Minutes from Batesville and the White River

This incredible **204 +/- acre property located off Collietown Road in Cushman, Arkansas** is truly one you must see to appreciate. Just a short drive from Batesville and the White River, this property offers the perfect combination of **privacy, beauty, and convenience**.

As you pull off the paved road and drive up the private entrance road, the property begins to reveal its beauty. As you reach the top of the hill, the landscape opens into a **stunning grass-covered meadow that will absolutely take your breath away**. The views from this hilltop are simply gorgeous and make the perfect setting for a **forever home, cabin, or retreat**. With **electric and water available**, the property is ready for your vision.

This tract offers an exceptional mix of **open fields, mature timber, rolling hills, and flat areas**, creating a diverse landscape that is both beautiful and functional. Scattered throughout the property are **unique rock formations and rich soils**, adding even more character to the land.

For the outdoorsman, this property is already set up and ready to enjoy with **established deer stands and food plots**. Wildlife is abundant, including **whitetail deer, large tom turkeys, and even the occasional bear**, thanks to its close proximity to the White River.

Properties in this **highly sought-after area rarely come available**, and when they do, they don't last long. The combination of **paved road access, privacy, incredible views, wildlife, and proximity to Batesville** makes this property truly special.

If you've been searching for a place like this, now is the time to see it.

For more information or to schedule a private tour, contact:

Pamela Welch

Mossy Oak Properties Selling Arkansas

Cell: [870-897-0700](tel:870-897-0700)

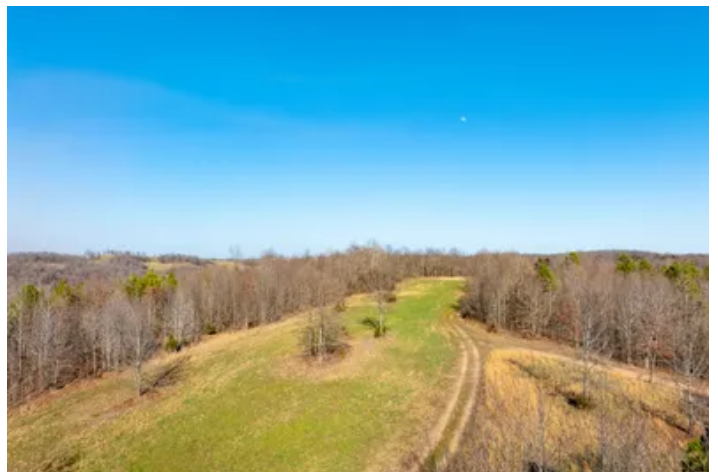
Office: [870-495-2123](tel:870-495-2123)

Come take a tour and experience just how incredible this property truly is.

Equal Housing Opportunity. www.WeSellArkansas.com

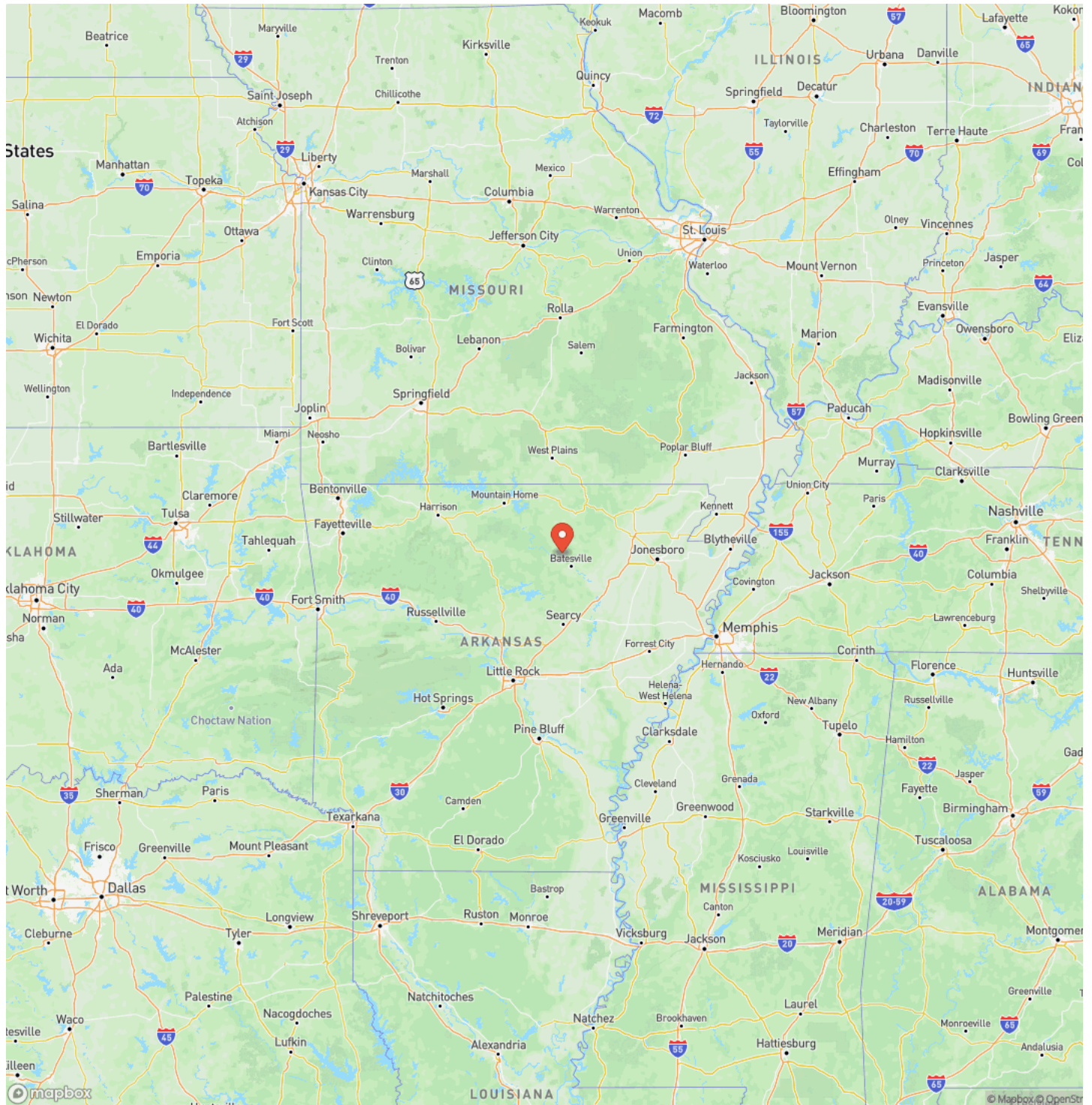


Breathtaking 204 +/- Acres with Hilltop Meadow & Incredible Views in Cushman, AR
Cushman, AR / Independence County



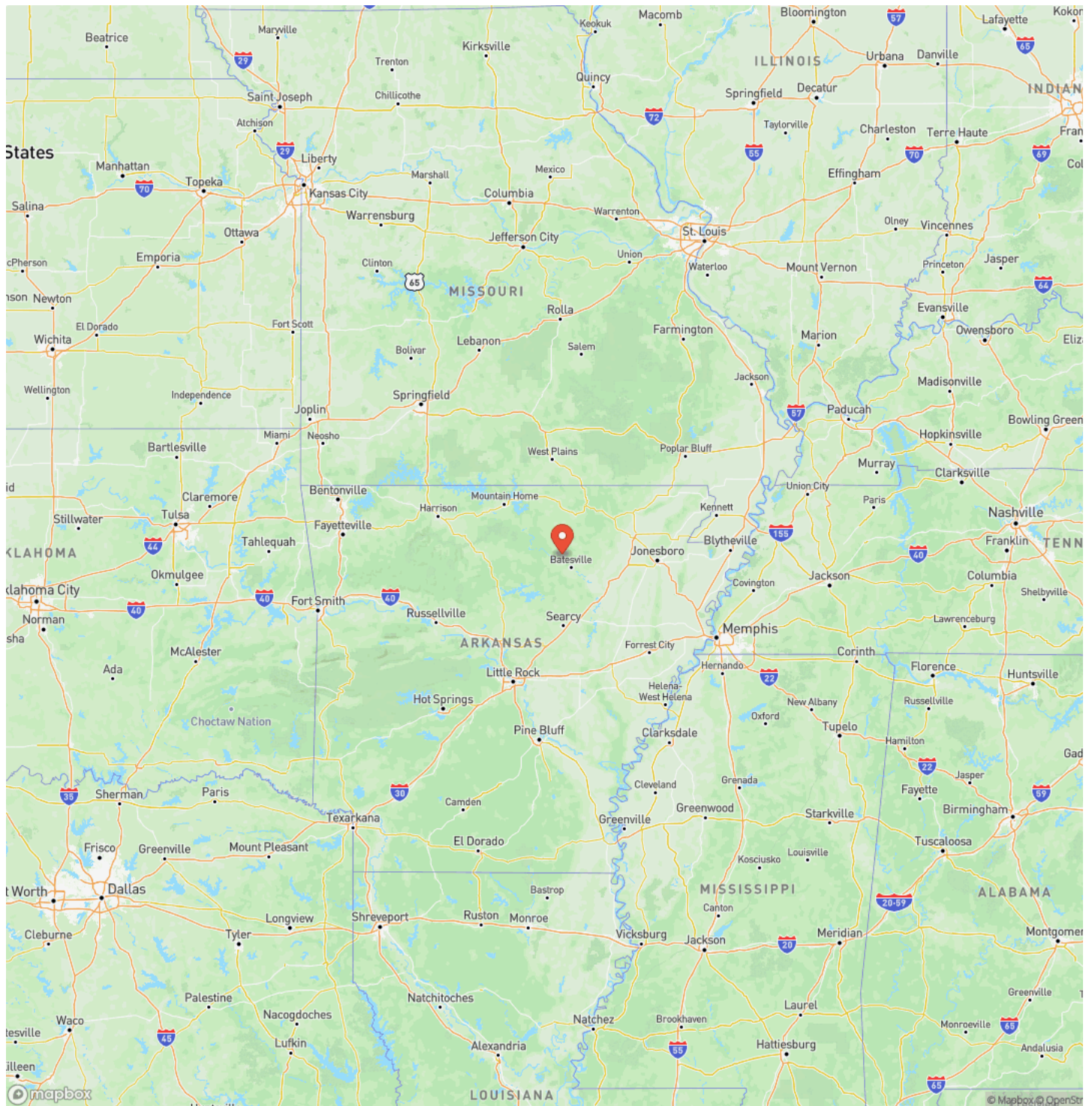
Breathtaking 204 +/- Acres with Hilltop Meadow & Incredible Views in Cushman, AR
Cushman, AR / Independence County

Locator Map

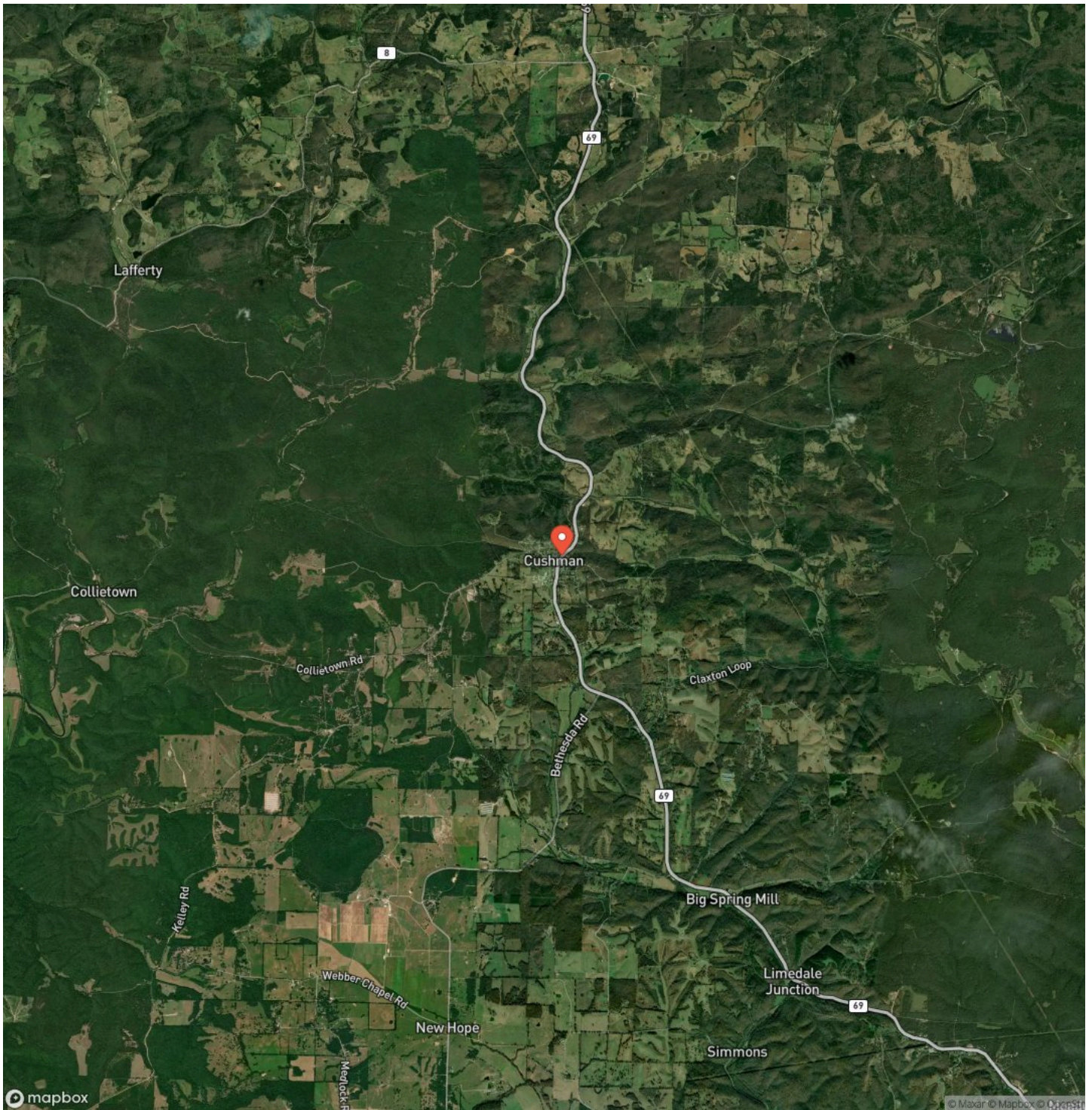


Breathtaking 204 +/- Acres with Hilltop Meadow & Incredible Views in Cushman, AR
Cushman, AR / Independence County

Locator Map



Satellite Map



DISCLAIMERS

Information in this brochure is provided solely for information purposes and does not constitute an offer to sell or advertise real estate outside the states in which broker or agent licensed. The information presented has been obtained from sources deemed to be reliable, but is not guaranteed or warranted by the agent, broker, or the sellers of these properties. This offering is subject to errors, omissions, prior sale, price change, correction or withdrawal from the market without notice. All references to age, square footage, income, expenses, acreage, carrying capacity, and land classification, etc. are approximate. Prospective buyers are chargeable with and expected to conduct their own independent investigation of the information and the property and to rely only on those results. Sellers reserve the right to accept or reject any and all offers without liability to any buyer or cooperating broker.

Maps are provided for illustration purposes only, the accuracy is not warranted. Parcels on interactive maps are not adjusted to match aerial backgrounds. This information is for reference purposes only and is not a legal document. Data maps contain errors. The seller and seller's agent are making known to all potential buyers that there may be variations between the location of the existing fence lines and the legal description of the deeded property. Seller and seller's agent make no warranties with regard to the location of the fence lines in relationship to the deeded property lines, nor does the Seller make any warranties or representations with regard to the specific acreage contained within the fenced property lines. Seller is selling the property in an "as is" condition, which includes the location of the fences as they exist. Boundaries shown on the accompanying maps are approximate, based on county parcel data. The maps are not to scale. The accuracy of the maps is not guaranteed. Prospective buyers are encouraged to verify fence lines, deeded property lines and acreages using a licensed surveyor at their own expense.

Mossy Oak Properties Selling Arkansas

8111 N St Louis St

Cave City, AR 72521

(870) 495-2123

<https://wesellarkansas.com/>

