

**4 Bed 2 Bath on 3 +/- Acres, New Build, Attached
Carport, Pleasant Plains, Arkansas**
31 Redneck Ln, Pleasant Plains, AR, 72568
Pleasant Plains, AR 72568

\$249,900
3± Acres
Independence County



4 Bed 2 Bath on 3 +/- Acres, New Build, Attached Carport, Pleasant Plains, Arkansas
Pleasant Plains, AR / Independence County

SUMMARY

Address

31 Redneck Ln, Pleasant Plains, AR, 72568

City, State Zip

Pleasant Plains, AR 72568

County

Independence County

Type

Residential Property

Latitude / Longitude

35.585509 / -91.579854

Dwelling Square Feet

1,920

Bedrooms / Bathrooms

4 / 2

Acreage

3

Price

\$249,900

Property Website

<https://www.mossoakproperties.com/property/4-bed-2-bath-on-3-acres-new-build-attached-carport-pleasant-plains-arkansas/independence/arkansas/99936/>



4 Bed 2 Bath on 3 +/- Acres, New Build, Attached Carport, Pleasant Plains, Arkansas Pleasant Plains, AR / Independence County

PROPERTY DESCRIPTION

New Custom Home on 3 +/- Acres | 4 Bed, 2 Bath | Near Pleasant Plains, AR

Welcome to this **beautifully custom-built home**, just completed and ready for its new owners, located at **31 Redneck Lane just outside Pleasant Plains, Arkansas**. Sitting on **3 +/- acres**, this property offers the perfect blend of **privacy, space, and easy maintenance**. With around 2,600 sq ft under roof and 1920 +/- sq ft heated and cooled.

This **4-bedroom, 2-bath home** features a well-designed layout with **seamless flooring throughout**, making it ideal for anyone needing **easy accessibility, including wheelchair or walker use**.

As you enter from the **covered carport**, you can step directly inside without ever being exposed to the weather. The front of the home features a **covered front porch**, perfect for relaxing and enjoying the peaceful surroundings.

Inside, you are welcomed into a **spacious living room** that flows into a **gorgeous open kitchen**, complete with a **large island, abundant cabinetry, and plenty of counter space**. There is ample room for a full dining table, and from there you can step out onto the **back deck**, ideal for outdoor entertaining.

The layout is thoughtfully designed:

- On one end of the home, you'll find the **primary suite**, featuring a **large bathroom and walk-in closet**, along with an additional room that can serve as a **bedroom, office, or nursery**.
- On the opposite end, there are **two additional bedrooms and a full bath**, providing privacy and separation for family or guests.

This home is currently receiving **final finishing touches, including completion of electrical work**, and will be **fully completed prior to closing**.

Additional features include:

- **Energy electric**
- **New survey on file**
- **Only restriction: no swine allowed**
- Covered carport, front porch, and back deck

With just **3 +/- acres**, you have enough space for privacy without the burden of maintaining a large property—making this an **easy-to-maintain and highly functional home**.

Offered at **\$274,500**, this is a great opportunity to own a **brand-new home in a quiet country setting**.

Listed with **Mossy Oak Properties Selling Arkansas**

Office: [870-495-2123](tel:870-495-2123)

Pamela Welch: [870-897-0700](tel:870-897-0700)

Equal Housing Opportunity. www.WeSellArkansas.com

At **Mossy Oak Properties Selling Arkansas**, you are always welcome. Whether you stop by our office or schedule a private appointment, you'll be greeted by a friendly, knowledgeable team ready to assist you. If you prefer a quieter, more private setting, we are happy to meet with you at our conference table and connect you with trusted lenders who can help—whether you're purchasing a home, farm, recreational land, or beginning your investment journey.

No matter the season, we make viewing property comfortable. During the colder months, our **fully enclosed six-seater ATV** keeps you warm and protected from the elements. In the hotter months, it provides a **cool, shaded ride**, allowing you to tour property

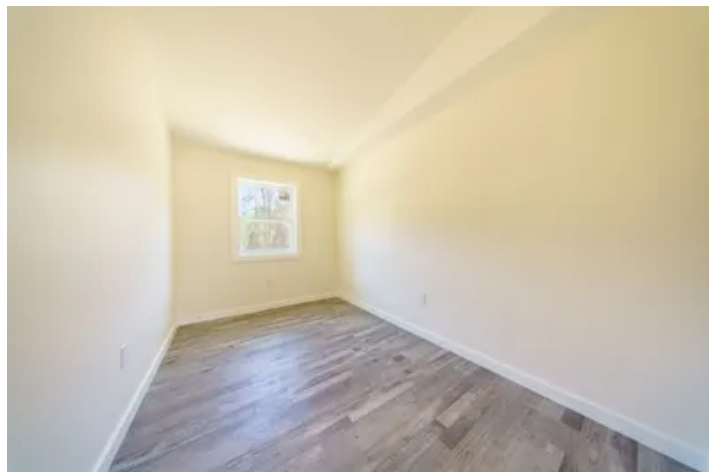
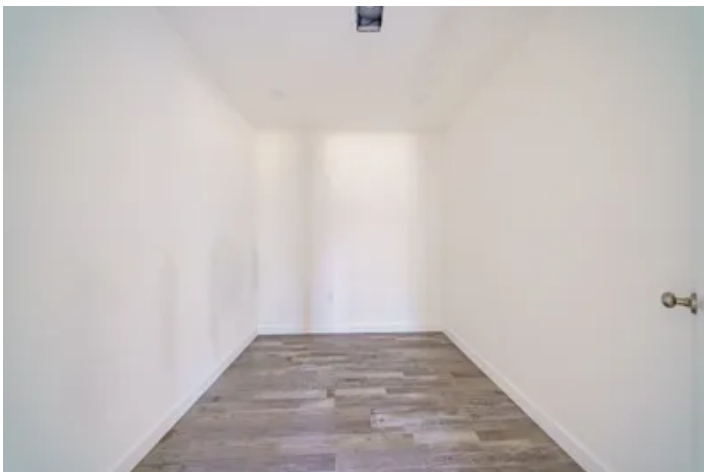
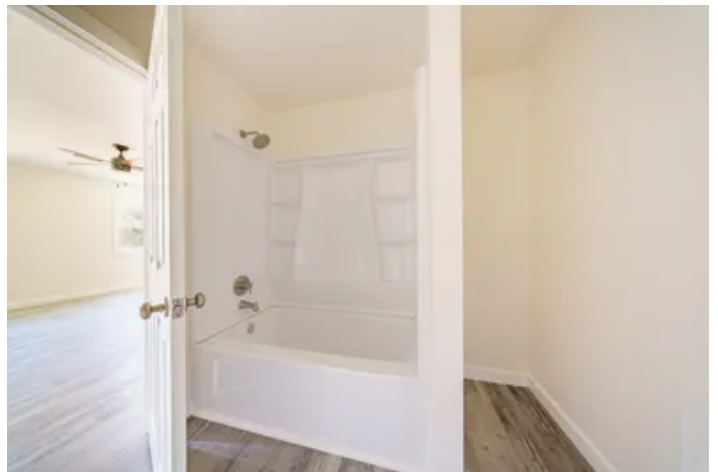
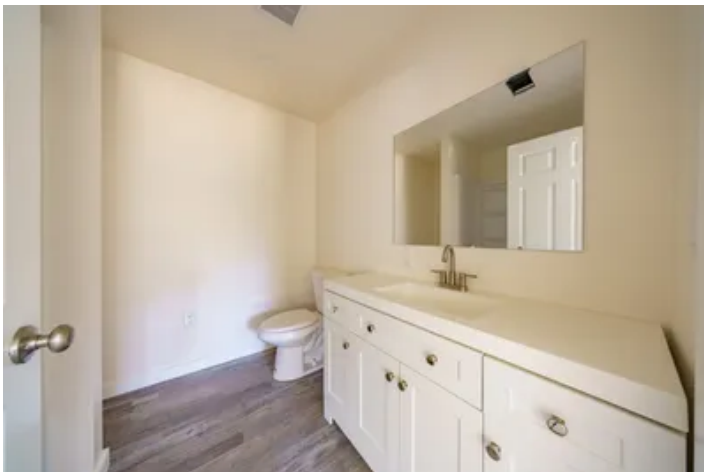


comfortably without battling the heat. Weather should never stand in the way of finding the right property.

With **flexible hours** to fit your schedule, we're here when you need us. Call to set up an appointment or stop by our office at **8111 North St. Louis Street, Cave City, Arkansas**, and let us work for you.

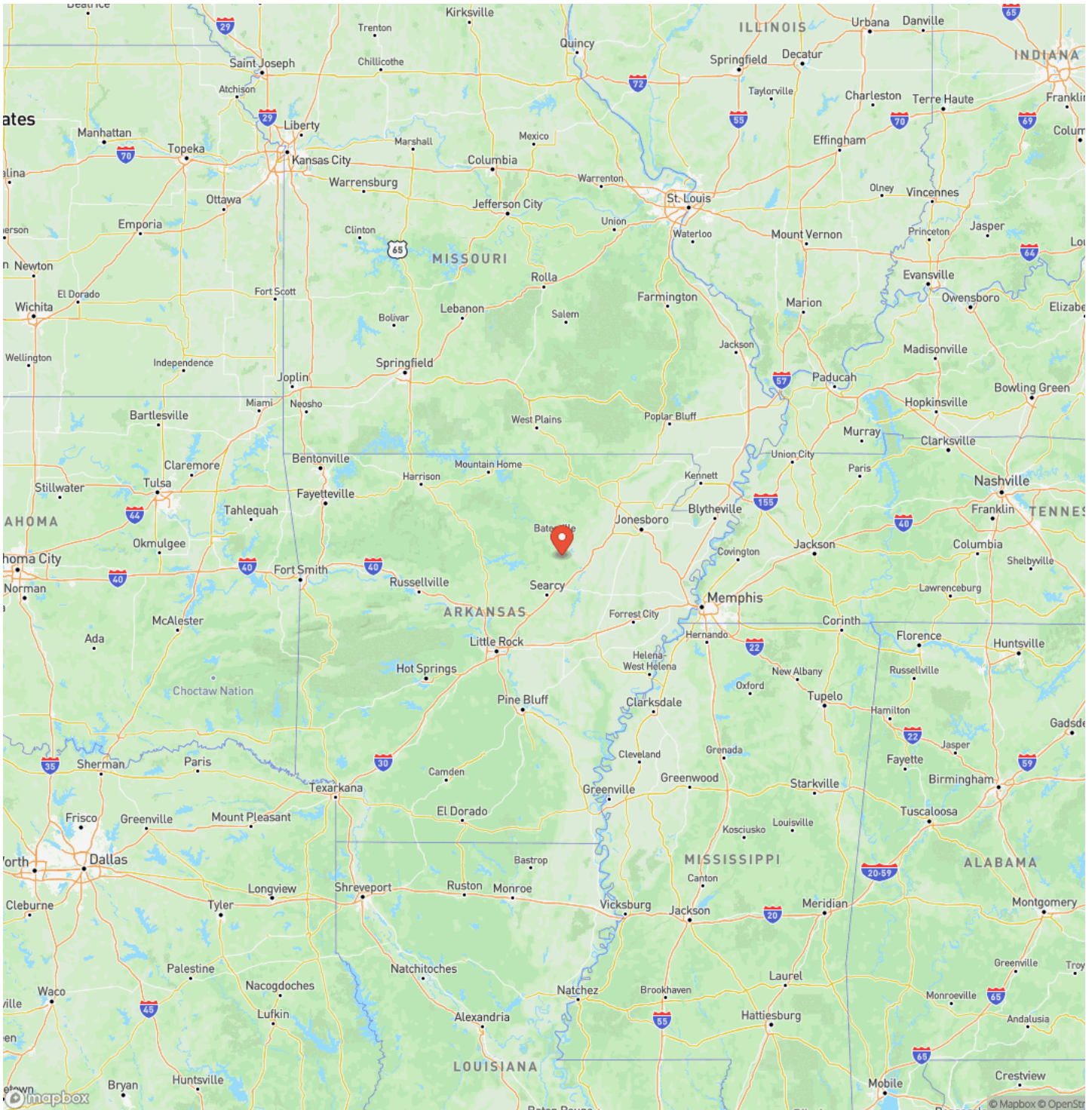


4 Bed 2 Bath on 3 +/- Acres, New Build, Attached Carport, Pleasant Plains, Arkansas
Pleasant Plains, AR / Independence County



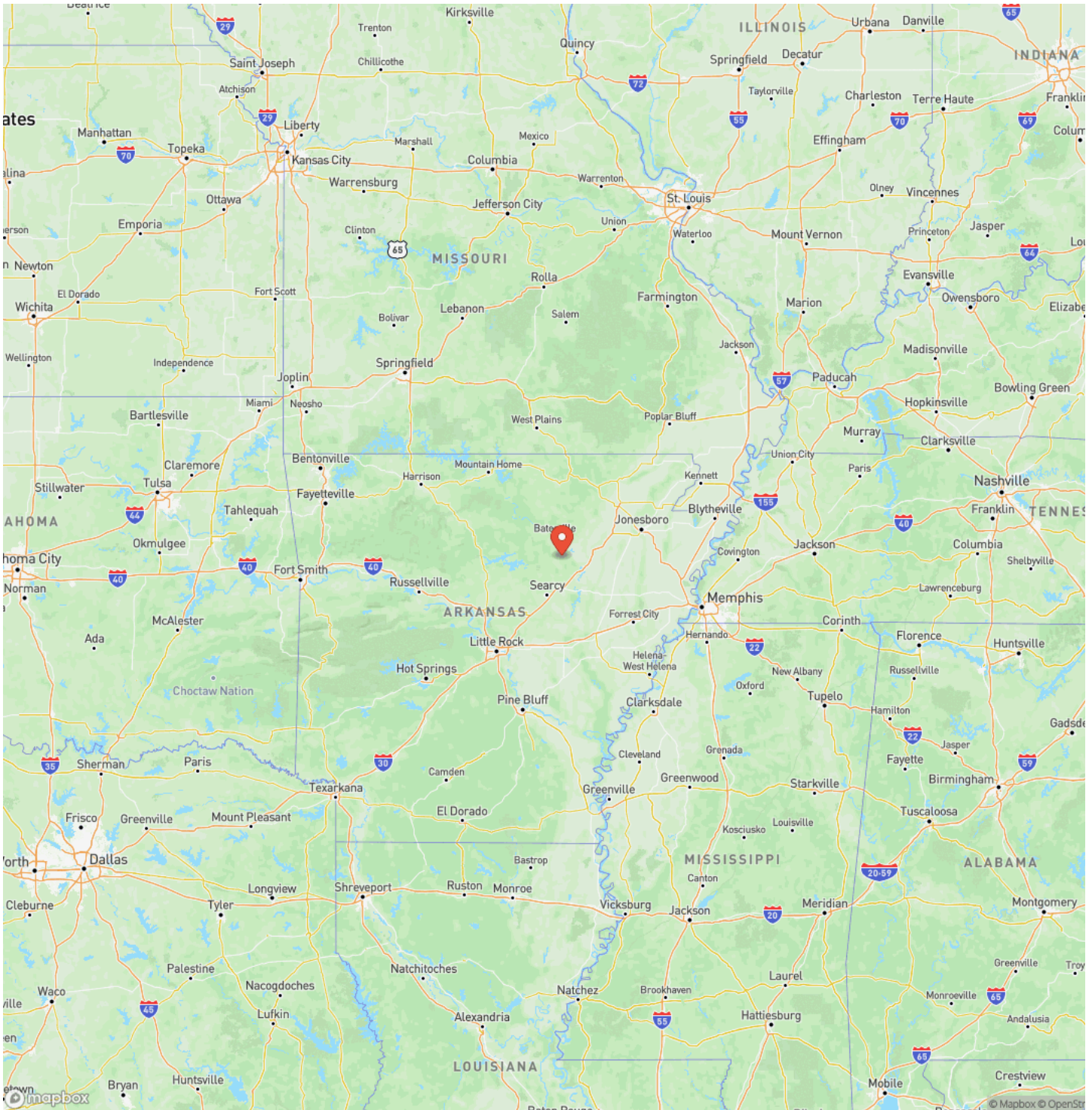
4 Bed 2 Bath on 3 +/- Acres, New Build, Attached Carport, Pleasant Plains, Arkansas
Pleasant Plains, AR / Independence County

Locator Map



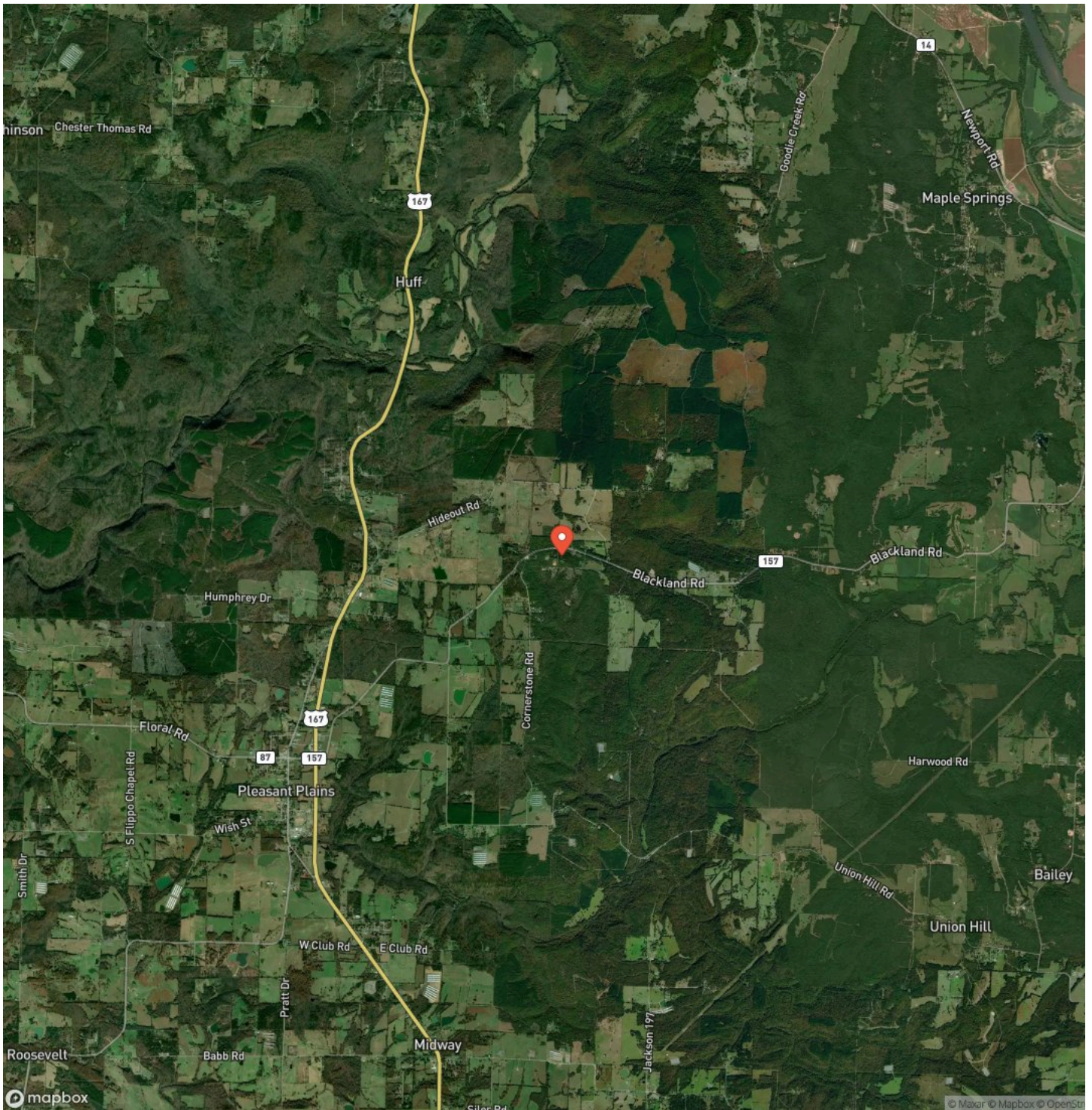
4 Bed 2 Bath on 3 +/- Acres, New Build, Attached Carport, Pleasant Plains, Arkansas
Pleasant Plains, AR / Independence County

Locator Map



4 Bed 2 Bath on 3 +/- Acres, New Build, Attached Carport, Pleasant Plains, Arkansas
Pleasant Plains, AR / Independence County

Satellite Map



DISCLAIMERS

Information in this brochure is provided solely for information purposes and does not constitute an offer to sell or advertise real estate outside the states in which broker or agent licensed. The information presented has been obtained from sources deemed to be reliable, but is not guaranteed or warranted by the agent, broker, or the sellers of these properties. This offering is subject to errors, omissions, prior sale, price change, correction or withdrawal from the market without notice. All references to age, square footage, income, expenses, acreage, carrying capacity, and land classification, etc. are approximate. Prospective buyers are chargeable with and expected to conduct their own independent investigation of the information and the property and to rely only on those results. Sellers reserve the right to accept or reject any and all offers without liability to any buyer or cooperating broker.

Maps are provided for illustration purposes only, the accuracy is not warranted. Parcels on interactive maps are not adjusted to match aerial backgrounds. This information is for reference purposes only and is not a legal document. Data maps contain errors. The seller and seller's agent are making known to all potential buyers that there may be variations between the location of the existing fence lines and the legal description of the deeded property. Seller and seller's agent make no warranties with regard to the location of the fence lines in relationship to the deeded property lines, nor does the Seller make any warranties or representations with regard to the specific acreage contained within the fenced property lines. Seller is selling the property in an "as is" condition, which includes the location of the fences as they exist. Boundaries shown on the accompanying maps are approximate, based on county parcel data. The maps are not to scale. The accuracy of the maps is not guaranteed. Prospective buyers are encouraged to verify fence lines, deeded property lines and acreages using a licensed surveyor at their own expense.

Mossy Oak Properties Selling Arkansas

8111 N St Louis St

Cave City, AR 72521

(870) 495-2123

<https://wesellarkansas.com/>

