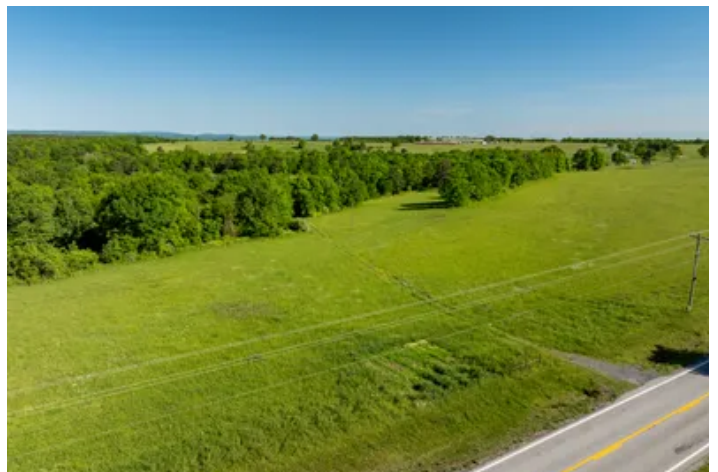


**28 +/- Gorgeous Acres, Pastureland, Highway Frontage,  
Cleburne County, Arkansas**  
Heber Springs Rd  
Locust Grove, AR 72550

**\$182,000**  
28± Acres  
Cleburne County



**28 +/- Gorgeous Acres, Pastureland, Highway Frontage, Cleburne County, Arkansas**  
**Locust Grove, AR / Cleburne County**

---

**SUMMARY**

**Address**

Heber Springs Rd

**City, State Zip**

Locust Grove, AR 72550

**County**

Cleburne County

**Type**

Business Opportunity, Recreational Land, Undeveloped Land,  
Horse Property, Hunting Land, Farms

**Latitude / Longitude**

35.694785 / -91.80144

**Acreage**

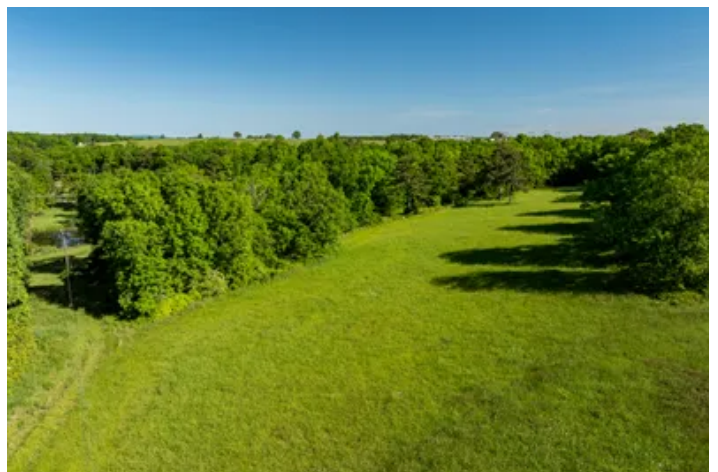
28

**Price**

\$182,000

**Property Website**

<https://www.mossyoakproperties.com/property/28-gorgeous-acres-pastureland-highway-frontage-cleburne-county-arkansas-cleburne-arkansas/80719/>





## 28 +/- Gorgeous Acres, Pastureland, Highway Frontage, Cleburne County, Arkansas Locust Grove, AR / Cleburne County

---

### **PROPERTY DESCRIPTION**

#### **Breathtaking 28 +/- Acres with 2,200+ ft of Highway Frontage – Just Minutes from Batesville & Greers Ferry Lake!**

Located in the charming community of Almond, Arkansas, this stunning 28 +/- acre tract offers over **2,200 feet of highway frontage** along Heber Springs Road—making it one of the most attractive and versatile pieces of land on the market today.

Whether you're looking for the perfect **home site**, a place to **run cattle**, or a **prime location for development**, this property checks all the boxes. With its gently rolling terrain, scenic views, and easy access, it's ready for your vision.

#### **Highlights:**

- 28 +/- Beautiful Acres
- Over 2,200 ft of Highway Frontage
- Just 10 Minutes from Batesville, AR
- Only a Few Miles from Greers Ferry Lake
- Great Spot to Build a Dream Home or Several Homes
- Ideal for Cattle or Hay Production (current owner cuts hay)
- Paved Road Access in a Peaceful Country Setting

The location is truly unbeatable—peaceful and private, yet close to all the amenities of town and recreation at the lake.

Whether you're an investor, a builder, or just looking for a beautiful piece of ground to call your own, don't miss this rare opportunity.

Proudly listed with Mossy Oak Properties Selling Arkansas

Office: [870-495-2123](tel:870-495-2123)

Listing Agent and your Local Land Specialist, Pamela Welch: [870-897-0700](tel:870-897-0700)

[www.WeSellArkansas.com](http://www.WeSellArkansas.com)

*Equal Housing Opportunity*

---

28 +/- Gorgeous Acres, Pastureland, Highway Frontage, Cleburne County, Arkansas  
Locust Grove, AR / Cleburne County

---



**28 +/- Gorgeous Acres, Pastureland, Highway Frontage, Cleburne County, Arkansas  
Locust Grove, AR / Cleburne County**

## LISTING REPRESENTATIVE

**For more information contact:**



### Representative

Pamela Welch

## Mobile

(870) 897-0700

## Office

(870) 495-2123

## Email

pwelch@mossyoakproperties.com

**Address**

8111 N. St. Louis

## City / State / Zip

## NOTES

[illegible]

**MORE INFO ONLINE:**

**wesellarkansas.com**

[illegible]

## **DISCLAIMERS**

Information in this brochure is provided solely for information purposes and does not constitute an offer to sell or advertise real estate outside the states in which broker or agent licensed. The information presented has been obtained from sources deemed to be reliable, but is not guaranteed or warranted by the agent, broker, or the sellers of these properties. This offering is subject to errors, omissions, prior sale, price change, correction or withdrawal from the market without notice. All references to age, square footage, income, expenses, acreage, carrying capacity, and land classification, etc. are approximate. Prospective buyers are chargeable with and expected to conduct their own independent investigation of the information and the property and to rely only on those results. Sellers reserve the right to accept or reject any and all offers without liability to any buyer or cooperating broker.

Maps are provided for illustration purposes only, the accuracy is not warranted. Parcels on interactive maps are not adjusted to match aerial backgrounds. This information is for reference purposes only and is not a legal document. Data maps contain errors. The seller and seller's agent are making known to all potential buyers that there may be variations between the location of the existing fence lines and the legal description of the deeded property. Seller and seller's agent make no warranties with regard to the location of the fence lines in relationship to the deeded property lines, nor does the Seller make any warranties or representations with regard to the specific acreage contained within the fenced property lines. Seller is selling the property in an "as is" condition, which includes the location of the fences as they exist. Boundaries shown on the accompanying maps are approximate, based on county parcel data. The maps are not to scale. The accuracy of the maps is not guaranteed. Prospective buyers are encouraged to verify fence lines, deeded property lines and acreages using a licensed surveyor at their own expense.

---

**Mossy Oak Properties Selling Arkansas**

8111 N St Louis St  
Cave City, AR 72521  
(870) 495-2123  
[wesellarkansas.com](http://wesellarkansas.com)

---

