

2 Bed 1 Bath, Bonus Room, 2 Car Garage, Corner Lot,
Cherokee Village, AR
38 Mixtec Drive
Cherokee Village, AR 72529

\$119,500
0.500± Acres
Sharp County



2 Bed 1 Bath, Bonus Room, 2 Car Garage, Corner Lot, Cherokee Village, AR
Cherokee Village, AR / Sharp County

SUMMARY

Address

38 Mixtec Drive

City, State Zip

Cherokee Village, AR 72529

County

Sharp County

Type

Residential Property, Single Family

Latitude / Longitude

36.262619 / -91.54775

Dwelling Square Feet

1230

Bedrooms / Bathrooms

2 / 1

Acreage

0.500

Price

\$119,500

Property Website

<https://www.mossyoakproperties.com/property/2-bed-1-bath-bonus-room-2-car-garage-corner-lot-cherokee-village-ar-sharp-arkansas/82153/>



2 Bed 1 Bath, Bonus Room, 2 Car Garage, Corner Lot, Cherokee Village, AR Cherokee Village, AR / Sharp County

PROPERTY DESCRIPTION

Charming Home on a Corner Lot in Cherokee Village – Great Location & Bonus Room!

Welcome to this **well-maintained home** sitting on a spacious **corner lot** in the heart of **Cherokee Village, Arkansas**. With approximately **1,230 sq ft**, this home offers **2 bedrooms, 1 bathroom**, and plenty of extra space for comfortable living.

Step inside to a **large living room** featuring a beautiful **brick fireplace**, perfect for cozy nights in. The **kitchen** is conveniently located with a **bonus room** just off the back—ideal for a home office, sunroom, or extra storage. The home also includes a **generously sized laundry room** with a door leading directly into the **two-car side-entry garage**.

You'll enjoy **central heat and air**, an **all-electric setup**, and a **large yard** with room to garden, play, or entertain. Situated **just off Highway 62** near the stoplight, the location offers easy access to everything Cherokee Village and the surrounding areas have to offer.

Currently tenant-occupied. A 24-hour notice is required for all showings.

Cherokee Village is known for its **natural beauty, friendly community, and access to seven lakes, two private golf courses, a community center, and scenic walking trails**. It's a wonderful place to live, retire, or invest.

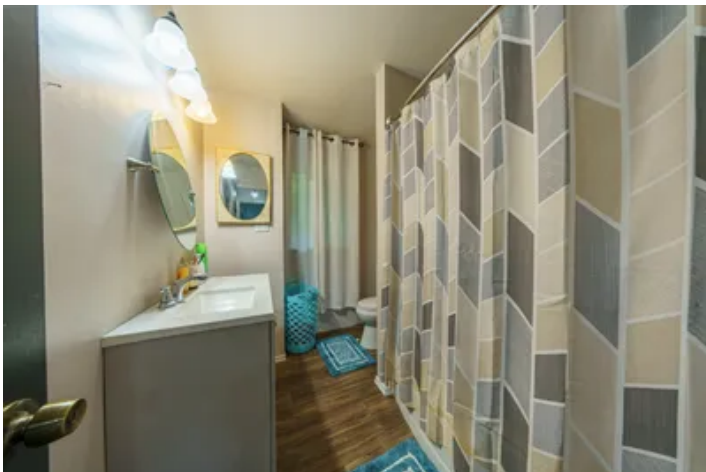
Proudly listed with Mossy Oak Properties Selling Arkansas

Office: [870-495-2123](tel:870-495-2123)

Listing Agent: Pamela Welch, [870-897-0700](tel:870-897-0700)

Equal Housing Opportunity

2 Bed 1 Bath, Bonus Room, 2 Car Garage, Corner Lot, Cherokee Village, AR
Cherokee Village, AR / Sharp County



**2 Bed 1 Bath, Bonus Room, 2 Car Garage, Corner Lot, Cherokee Village, AR
Cherokee Village, AR / Sharp County**

LISTING REPRESENTATIVE

For more information contact:



Representative

Pamela Welch

Mobile

(870) 897-0700

Office

(870) 495-2123

Email

pwelch@mossyoakproperties.com

Address

8111 N. St. Louis

City / State / Zip

NOTES

[illegible]

MORE INFO ONLINE:

wesellarkansas.com

[illegible]

DISCLAIMERS

Information in this brochure is provided solely for information purposes and does not constitute an offer to sell or advertise real estate outside the states in which broker or agent licensed. The information presented has been obtained from sources deemed to be reliable, but is not guaranteed or warranted by the agent, broker, or the sellers of these properties. This offering is subject to errors, omissions, prior sale, price change, correction or withdrawal from the market without notice. All references to age, square footage, income, expenses, acreage, carrying capacity, and land classification, etc. are approximate. Prospective buyers are chargeable with and expected to conduct their own independent investigation of the information and the property and to rely only on those results. Sellers reserve the right to accept or reject any and all offers without liability to any buyer or cooperating broker.

Maps are provided for illustration purposes only, the accuracy is not warranted. Parcels on interactive maps are not adjusted to match aerial backgrounds. This information is for reference purposes only and is not a legal document. Data maps contain errors. The seller and seller's agent are making known to all potential buyers that there may be variations between the location of the existing fence lines and the legal description of the deeded property. Seller and seller's agent make no warranties with regard to the location of the fence lines in relationship to the deeded property lines, nor does the Seller make any warranties or representations with regard to the specific acreage contained within the fenced property lines. Seller is selling the property in an "as is" condition, which includes the location of the fences as they exist. Boundaries shown on the accompanying maps are approximate, based on county parcel data. The maps are not to scale. The accuracy of the maps is not guaranteed. Prospective buyers are encouraged to verify fence lines, deeded property lines and acreages using a licensed surveyor at their own expense.

Mossy Oak Properties Selling Arkansas

8111 N St Louis St
Cave City, AR 72521
(870) 495-2123
wesellarkansas.com

