

40 +/- Acres of Prime Hunting Land | Whitetail & Turkey  
in Fulton County, AR  
Havenwood Rd  
Viola, AR 72583

**\$140,000**  
40± Acres  
Fulton County



**40 +/- Acres of Prime Hunting Land | Whitetail & Turkey in Fulton County, AR  
Viola, AR / Fulton County**

---

**SUMMARY**

**Address**

Havenwood Rd

**City, State Zip**

Viola, AR 72583

**County**

Fulton County

**Type**

Recreational Land, Hunting Land

**Latitude / Longitude**

36.360868 / -91.926959

**Acreage**

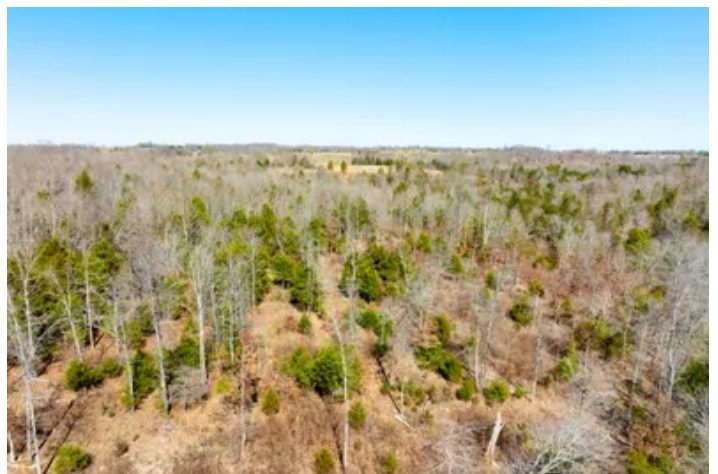
40

**Price**

\$140,000

**Property Website**

<https://www.mossyoakproperties.com/property/40-acres-of-prime-hunting-land-whitetail-turkey-in-fulton-county-ar-fulton-arkansas/100167/>



## 40 +/- Acres of Prime Hunting Land | Whitetail & Turkey in Fulton County, AR Viola, AR / Fulton County

---

### **PROPERTY DESCRIPTION**

#### **40 +/- Acres | Affordable Hunting Land, Pasture & Homesite in Fulton County, AR**

Opportunities like this are getting harder to find-especially when it comes to a **smaller, affordable tract** in this area. This **40 +/- acre property on Green Valley Road** offers the perfect setup for those looking to own land without breaking the bank.

This property is known for holding **whitetail deer and large turkey**, offering excellent **bedding areas and hunting opportunities**. With a mix of timber and open ground, it provides the ideal habitat for wildlife while also giving you usable space.

The sellers have already done some clearing, giving you a **great starting point for a homesite or cabin**, while still maintaining privacy and cover. There is also room to **run a few cows or create a small hobby farm**, making this a very versatile tract.

With **gravel road frontage on Green Valley Road**, access is easy, and the location is convenient-just minutes from **Salem** and approximately **15 minutes to Ash Flat**.

Whether you're looking for a **hunting property, a place to build, or an affordable land investment**, this is a rare opportunity that doesn't come along often.

#### **Listed with Mossy Oak Properties Selling Arkansas**

Office: [870-495-2123](tel:870-495-2123)

Pamela Welch: [870-897-0700](tel:870-897-0700)

**Equal Housing Opportunity.** [www.WeSellArkansas.com](http://www.WeSellArkansas.com)

At **Mossy Oak Properties Selling Arkansas**, you are always welcome. Whether you stop by our office or schedule a private appointment, you'll be greeted by a friendly, knowledgeable team ready to assist you. If you prefer a quieter, more private setting, we are happy to meet with you at our conference table and connect you with trusted lenders who can help-whether you're purchasing a home, farm, recreational land, or beginning your investment journey.

No matter the season, we make viewing property comfortable. During the colder months, our **fully enclosed six-seater ATV** keeps you warm and protected from the elements. In the hotter months, it provides a **cool, shaded ride**, allowing you to tour property comfortably without battling the heat. Weather should never stand in the way of finding the right property.

With **flexible hours** to fit your schedule, we're here when you need us. Call to set up an appointment or stop by our office at **8111 North St. Louis Street, Cave City, Arkansas**, and let us work for you.

40 +/- Acres of Prime Hunting Land | Whitetail & Turkey in Fulton County, AR  
Viola, AR / Fulton County

---







## **DISCLAIMERS**

Information in this brochure is provided solely for information purposes and does not constitute an offer to sell or advertise real estate outside the states in which broker or agent licensed. The information presented has been obtained from sources deemed to be reliable, but is not guaranteed or warranted by the agent, broker, or the sellers of these properties. This offering is subject to errors, omissions, prior sale, price change, correction or withdrawal from the market without notice. All references to age, square footage, income, expenses, acreage, carrying capacity, and land classification, etc. are approximate. Prospective buyers are chargeable with and expected to conduct their own independent investigation of the information and the property and to rely only on those results. Sellers reserve the right to accept or reject any and all offers without liability to any buyer or cooperating broker.

Maps are provided for illustration purposes only, the accuracy is not warranted. Parcels on interactive maps are not adjusted to match aerial backgrounds. This information is for reference purposes only and is not a legal document. Data maps contain errors. The seller and seller's agent are making known to all potential buyers that there may be variations between the location of the existing fence lines and the legal description of the deeded property. Seller and seller's agent make no warranties with regard to the location of the fence lines in relationship to the deeded property lines, nor does the Seller make any warranties or representations with regard to the specific acreage contained within the fenced property lines. Seller is selling the property in an "as is" condition, which includes the location of the fences as they exist. Boundaries shown on the accompanying maps are approximate, based on county parcel data. The maps are not to scale. The accuracy of the maps is not guaranteed. Prospective buyers are encouraged to verify fence lines, deeded property lines and acreages using a licensed surveyor at their own expense.

---

**Mossy Oak Properties Selling Arkansas**

8111 N St Louis St

Cave City, AR 72521

(870) 495-2123

<https://wesellarkansas.com/>

---

