

Empty Warehouse, Batesville, Arkansas
497 LAWRENCE ST
Batesville, AR 72501

\$99,000
0.200± Acres
Independence County



Empty Warehouse, Batesville, Arkansas
Batesville, AR / Independence County

SUMMARY

Address

497 LAWRENCE ST

City, State Zip

Batesville, AR 72501

County

Independence County

Type

Business Opportunity, Commercial, Lot

Latitude / Longitude

35.766781 / -91.648949

Taxes (Annually)

600

Dwelling Square Feet

3000

Acreage

0.200

Price

\$99,000

Property Website

<https://www.mossyoakproperties.com/property/empty-warehouse-batesville-arkansas-independence-arkansas/47950/>



MORE INFO ONLINE:

MossyOakProperties.com

Empty Warehouse, Batesville, Arkansas
Batesville, AR / Independence County

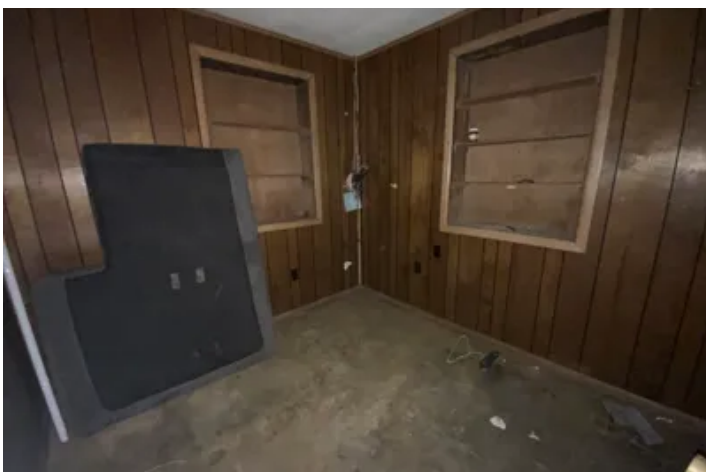
PROPERTY DESCRIPTION

Great location in Batesville! This would make a great warehouse for electrical, plumbing, construction, and so much more! This could be it if you have been looking for a blank slate!

It is listed with Mossy Oak Properties Selling Arkansas [870-495-2123](tel:870-495-2123). Listing agent **Pamela Welch** [870-897-0700](tel:870-897-0700). Equal Housing Opportunity. Call us today to set up a time to view this property. www.WeSellArkansas.com



Empty Warehouse, Batesville, Arkansas
Batesville, AR / Independence County



Empty Warehouse, Batesville, Arkansas
Batesville, AR / Independence County

LISTING REPRESENTATIVE

For more information contact:



Representative

Pamela Welch

Mobile

(870) 897-0700

Office

(870) 495-2123

Email

pwelch@mossyoakproperties.com

Address

8111 N. St. Louis

City / State / Zip

Cave City, AR 72521

NOTES

[illegible]

MORE INFO ONLINE:

MossyOakProperties.com

[illegible]

DISCLAIMERS

Information in this brochure is provided solely for information purposes and does not constitute an offer to sell or advertise real estate outside the states in which broker or agent licensed. The information presented has been obtained from sources deemed to be reliable, but is not guaranteed or warranted by the agent, broker, or the sellers of these properties. This offering is subject to errors, omissions, prior sale, price change, correction or withdrawal from the market without notice. All references to age, square footage, income, expenses, acreage, carrying capacity, and land classification, etc. are approximate. Prospective buyers are chargeable with and expected to conduct their own independent investigation of the information and the property and to rely only on those results. Sellers reserve the right to accept or reject any and all offers without liability to any buyer or cooperating broker.

Maps are provided for illustration purposes only, the accuracy is not warranted. Parcels on interactive maps are not adjusted to match aerial backgrounds. This information is for reference purposes only and is not a legal document. Data maps contain errors. The seller and seller's agent are making known to all potential buyers that there may be variations between the location of the existing fence lines and the legal description of the deeded property. Seller and seller's agent make no warranties with regard to the location of the fence lines in relationship to the deeded property lines, nor does the Seller make any warranties or representations with regard to the specific acreage contained within the fenced property lines. Seller is selling the property in an "as is" condition, which includes the location of the fences as they exist. Boundaries shown on the accompanying maps are approximate, based on county parcel data. The maps are not to scale. The accuracy of the maps is not guaranteed. Prospective buyers are encouraged to verify fence lines, deeded property lines and acreages using a licensed surveyor at their own expense.



Mossy Oak Properties Selling Arkansas

520 N Main
Cave City, AR 72521
(870) 495-2123
MossyOakProperties.com

