

15 +/- Acres, Ready to build on, Hunting Land,
Batesville, Arkansas
Jamestown Loop
Batesville, AR 72501

\$99,500
15± Acres
Independence County



15 +/- Acres, Ready to build on, Hunting Land, Batesville, Arkansas
Batesville, AR / Independence County

SUMMARY

Address

Jamestown Loop

City, State Zip

Batesville, AR 72501

County

Independence County

Type

Recreational Land, Hunting Land, Timberland

Latitude / Longitude

35.653644 / -91.701022

Acreage

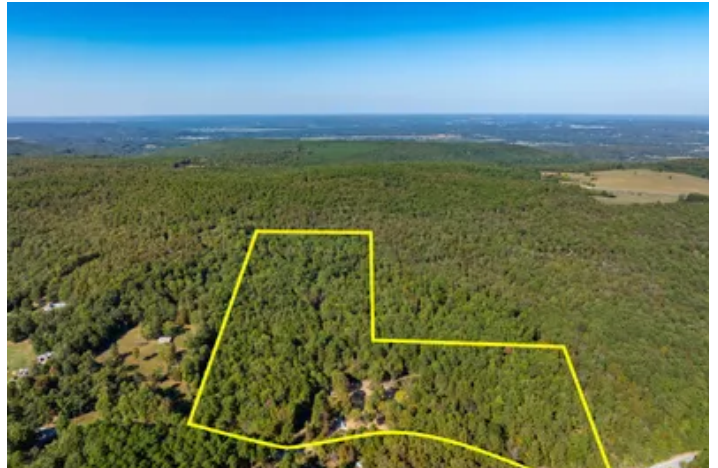
15

Price

\$99,500

Property Website

<https://www.mossoakproperties.com/property/15-acres-ready-to-build-on-hunting-land-batesville-arkansas/independence/arkansas/92840/>



15 +/- Acres, Ready to build on, Hunting Land, Batesville, Arkansas
Batesville, AR / Independence County

PROPERTY DESCRIPTION

15 +/- Acres of Prime Arkansas Land – Build, Hunt, or Live Off the Land!

Looking for the perfect spot to **build your dream home in the Ozarks**? This **beautiful 15 +/--acre property in Arkansas** offers the ideal blend of **privacy, accessibility, and natural beauty**. With a **cleared homesite, utilities available**, and **room to hunt and explore**, this property is truly a blank canvas ready for your vision.

Build-Ready with Utilities

This land has **water and electric accessible**, saving you time and expense when it's time to build. The **driveway is already in place**, leading to a **cleared area perfectly suited for a home, modular setup, or camper site**. Whether you're looking to build a permanent residence, a weekend cabin, or a homestead to live off the land, this property is ready to go. All you have to do is bring your plans and start building!

Ideal for Outdoor Enthusiasts

With **15 acres of gently rolling terrain**, this property provides ample space to **hunt, garden, or enjoy nature** right outside your door. It's large enough to give you privacy and room to roam, yet manageable enough for easy maintenance. This area is known for its **abundant deer, turkey, and small game**, making it a dream setup for hunters or anyone who loves the outdoors.

Endless Possibilities

Whether you're seeking a **private country retreat**, a **build site with acreage**, or **recreational land in Arkansas**, this property fits the bill. Add a cabin, bring a camper, or set up your forever home—you'll have the flexibility to make it your own. It's also a great opportunity for those wanting to **live off-grid or create a self-sufficient lifestyle** surrounded by the peace and beauty of rural Arkansas.

Affordable and Accessible

This **Ozark acreage for sale** is **priced to sell** and offers incredible value for anyone looking to own **Arkansas land with utilities and easy access**. Properties like this don't stay on the market long! This property is Agent Owned.

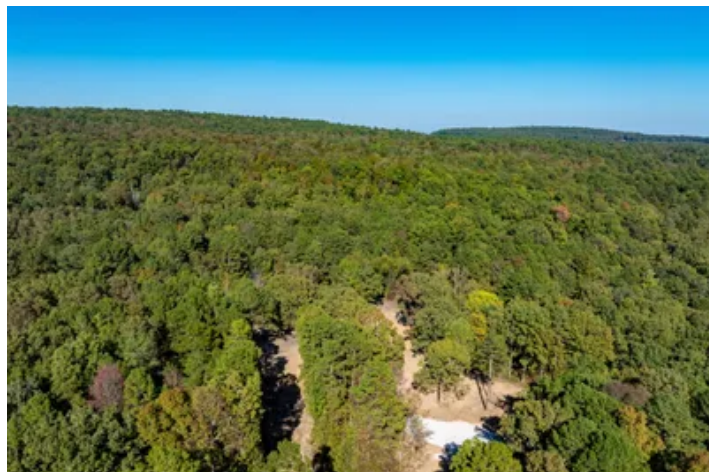
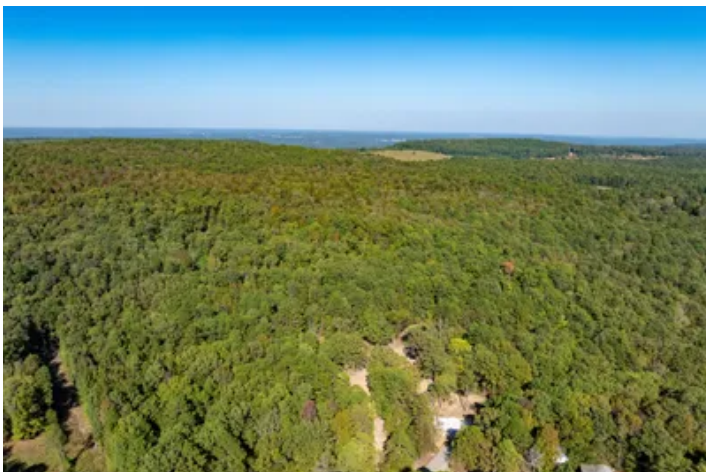
Proudly Listed with Mossy Oak Properties Selling Arkansas

Pamela Welch – [870-897-0700](tel:870-897-0700)

Brayden Welch – [870-217-6727](tel:870-217-6727)

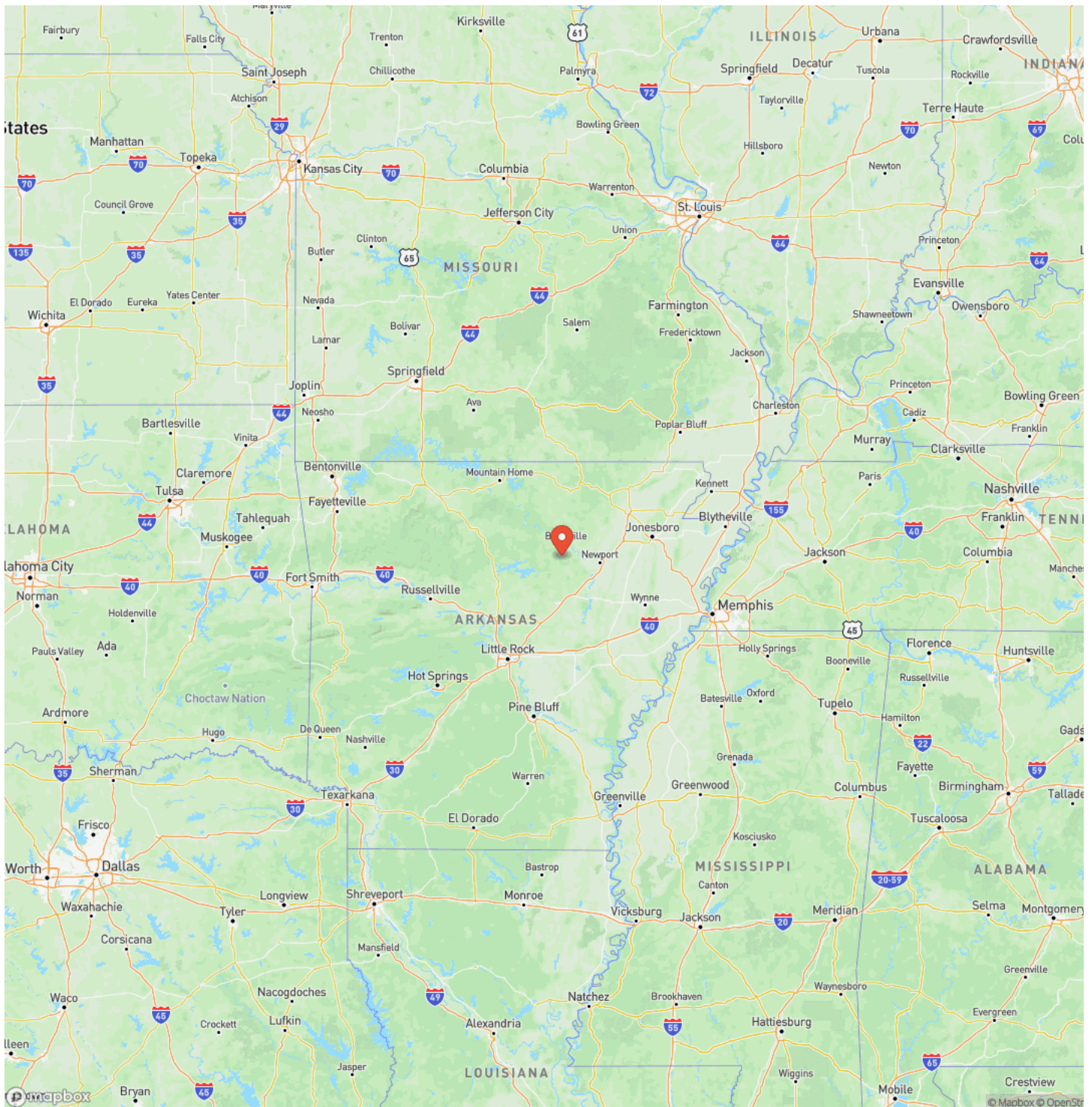
Equal Housing Opportunity

15 +/- Acres, Ready to build on, Hunting Land, Batesville, Arkansas
Batesville, AR / Independence County



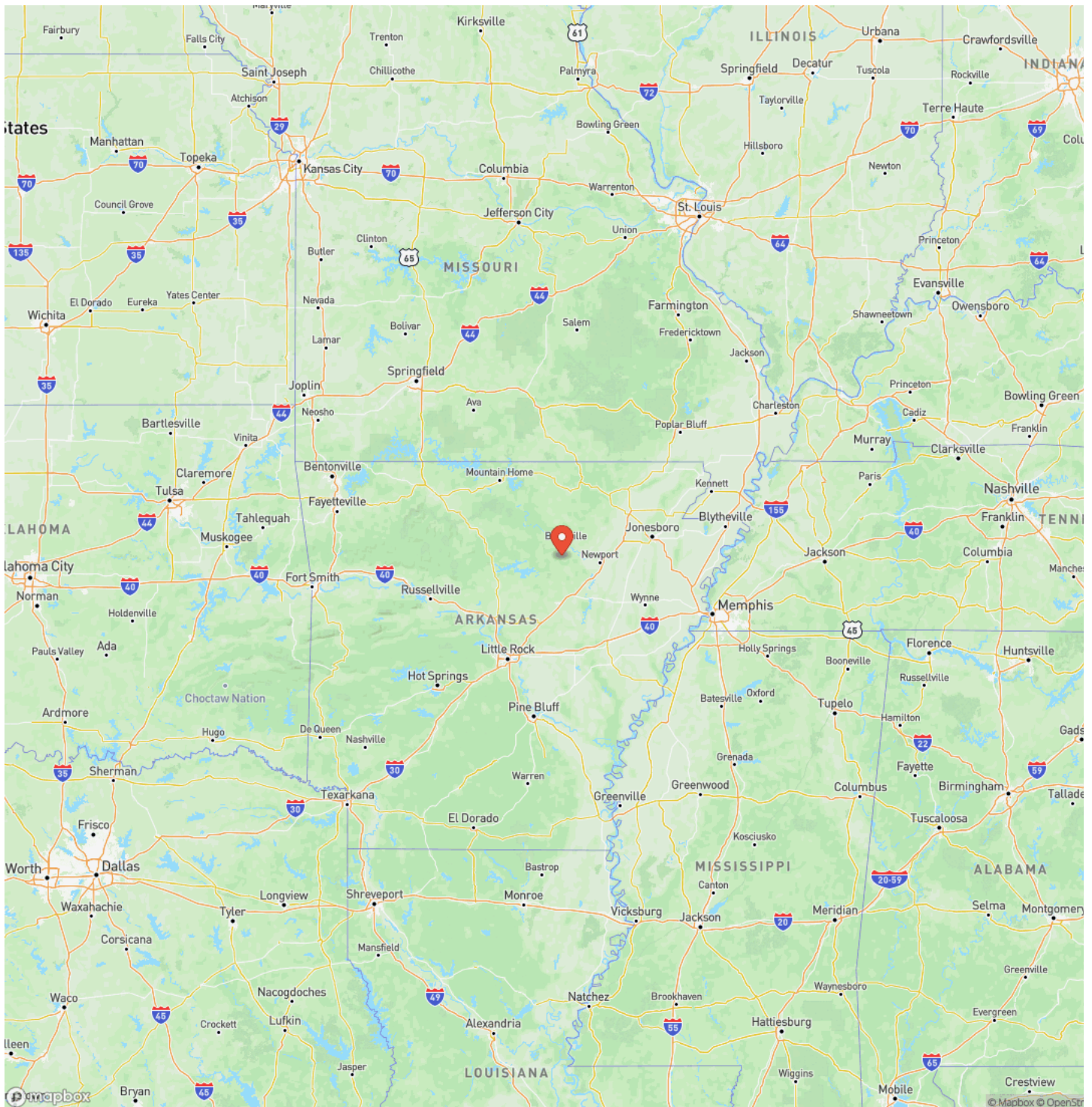
15 +/- Acres, Ready to build on, Hunting Land, Batesville, Arkansas
Batesville, AR / Independence County

Locator Map



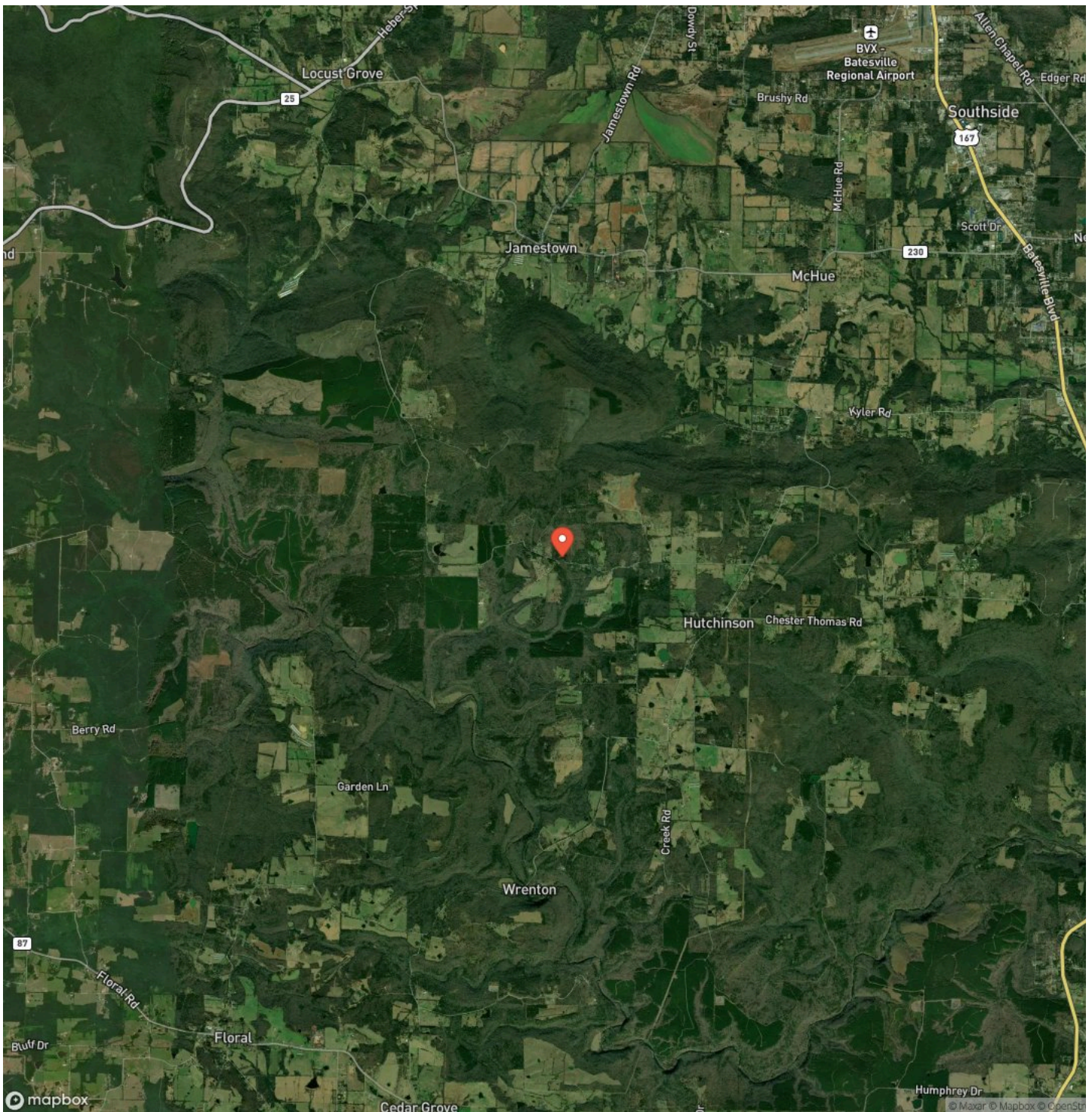
15 +/- Acres, Ready to build on, Hunting Land, Batesville, Arkansas
Batesville, AR / Independence County

Locator Map



15 +/- Acres, Ready to build on, Hunting Land, Batesville, Arkansas
Batesville, AR / Independence County

Satellite Map



15 +/- Acres, Ready to build on, Hunting Land, Batesville, Arkansas
Batesville, AR / Independence County

LISTING REPRESENTATIVE

For more information contact:



Representative

Pamela Welch

Mobile

(870) 897-0700

Office

(870) 495-2123

Email

pwelch@mossyoakproperties.com

Address

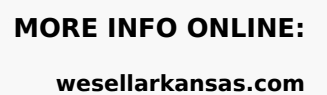
8111 N. St. Louis

City / State / Zip

Cave City, AR 72521

NOTES

[illegible]

[illegible]

DISCLAIMERS

Information in this brochure is provided solely for information purposes and does not constitute an offer to sell or advertise real estate outside the states in which broker or agent licensed. The information presented has been obtained from sources deemed to be reliable, but is not guaranteed or warranted by the agent, broker, or the sellers of these properties. This offering is subject to errors, omissions, prior sale, price change, correction or withdrawal from the market without notice. All references to age, square footage, income, expenses, acreage, carrying capacity, and land classification, etc. are approximate. Prospective buyers are chargeable with and expected to conduct their own independent investigation of the information and the property and to rely only on those results. Sellers reserve the right to accept or reject any and all offers without liability to any buyer or cooperating broker.

Maps are provided for illustration purposes only, the accuracy is not warranted. Parcels on interactive maps are not adjusted to match aerial backgrounds. This information is for reference purposes only and is not a legal document. Data maps contain errors. The seller and seller's agent are making known to all potential buyers that there may be variations between the location of the existing fence lines and the legal description of the deeded property. Seller and seller's agent make no warranties with regard to the location of the fence lines in relationship to the deeded property lines, nor does the Seller make any warranties or representations with regard to the specific acreage contained within the fenced property lines. Seller is selling the property in an "as is" condition, which includes the location of the fences as they exist. Boundaries shown on the accompanying maps are approximate, based on county parcel data. The maps are not to scale. The accuracy of the maps is not guaranteed. Prospective buyers are encouraged to verify fence lines, deeded property lines and acreages using a licensed surveyor at their own expense.

Mossy Oak Properties Selling Arkansas

8111 N St Louis St
Cave City, AR 72521
(870) 495-2123
wesellarkansas.com

