

**4 Bedroom 3.5 Bathroom Home on Crown Lake with
over 1 acre, Horseshoe Bend, Arkansas**
1605 Michigan Ave
Horseshoe Bend, AR 72512

\$1,150,000
1± Acres
Izard County



4 Bedroom 3.5 Bathroom Home on Crown Lake with over 1 acre, Horseshoe Bend, Arkansas
Horseshoe Bend, AR / Izard County

SUMMARY

Address

1605 Michigan Ave

City, State Zip

Horseshoe Bend, AR 72512

County

Izard County

Type

Residential Property, Lakefront, Recreational Land

Latitude / Longitude

36.207883 / -91.728163

Taxes (Annually)

5080

Dwelling Square Feet

4151

Bedrooms / Bathrooms

4 / 3.5

Acreage

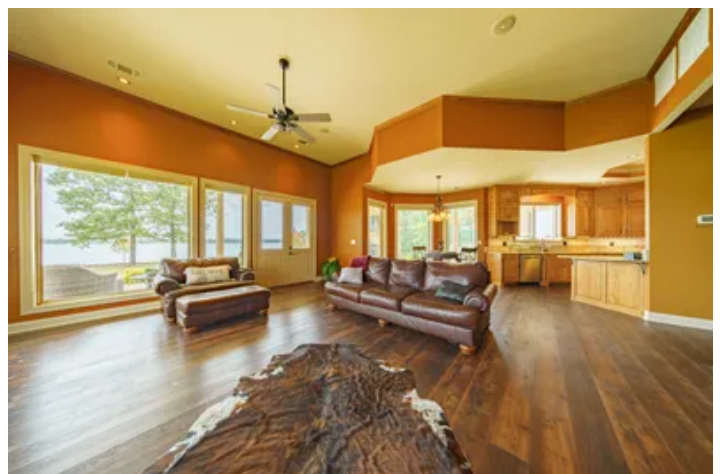
1

Price

\$1,150,000

Property Website

<https://www.mossyoakproperties.com/property/4-bedroom-3-5-bathroom-home-on-crown-lake-with-over-1-acre-horseshoe-bend-arkansas-izard-arkansas/64635/>



MORE INFO ONLINE:

[wesellarkansas.com](https://www.wesellarkansas.com)

4 Bedroom 3.5 Bathroom Home on Crown Lake with over 1 acre, Horseshoe Bend, Arkansas

Horseshoe Bend, AR / IZARD County

PROPERTY DESCRIPTION

Spectacular Home on Crown Lake with inside and outside fireplace!!

Gorgeous home nestled on your very own private point on Crown Lake. This exceptional property combines modern luxury with lakeside tranquility. This point is over 1 acre and Crown Lake is about 650 +/- acres. Boasting over 6,000 +/- square feet under roof, including about 879 sq ft covered porch with a fireplace and a 324 +/- sq ft balcony, this home offers ample space for relaxation, entertainment, and outdoor enjoyment.

Outdoor Living at Its Finest

Step outside into a beautifully landscaped yard that feels like a scene from a magazine. Gather by the water for a cozy evening around the campfire, roasting hotdogs or making s'mores, while taking in the peaceful lakeside views.

The expansive back porch stretches across the entire length of the house, creating the perfect outdoor living area. With a built-in fireplace along with a TV mounted which is perfect for watching the game, seating area, and a pass-through window from the kitchen, it's ideal for hosting gatherings or enjoying quiet mornings by the lake. There's also plenty of space for lawn games like horseshoes, tetherball, and more. A private boat dock offers direct access to Crown Lake for all your water activities. With this home, it is great for children to be able to wald straight into water and play, not steep, very nice and level area!

Main Level: Spacious and Practical

Welcoming Main Level with Stunning Views

As you enter through the front door, you're greeted by a formal living room and a cozy sitting area. An entire wall of windows offers a breathtaking view of Crown Lake, flooding the space with natural light and creating a seamless connection between the indoors and outdoors. This area is perfect for relaxing or entertaining, with the serene lake view as your backdrop.

Upon entry from garage area, you'll find a large three-car garage with additional space for a golf cart. The door from garage comes into a mudroom featuring a sink, ample cabinets, and just off this is a powder room for convenience. Just around the corner you will find **gourmet kitchen** which is a chef's dream, complete with floor-to-ceiling pantry shelving and built-in plug-ins for small appliances to keep counters clutter-free. Gorgeous countertops and a custom backsplash add elegance to this functional space, while the bar area provides seating for two. A gas cook stove, a nice kitchen island and lots of custom cabinets!

The living room, centered around a grand gas fireplace, flows naturally to the outdoor porch through large glass doors. Off the kitchen, a formal dining area offers a perfect space for family dinners or entertaining guests.

Private Primary Suite on Main Floor

The primary suite is a true sanctuary. The spa-like bathroom features a soaking tub surrounded by windows, a large custom-tiled walk-in shower, and a private toilet room. Dual his-and-hers closets with custom shelving provide ample storage. The master bedroom itself is spacious and bright, with windows overlooking the lake and private access to the back porch for serene mornings or evening relaxation. Total bedrooms on this level is just 1 main bedroom, 1 full bathroom and a powder room.

Second Level: Bedrooms with Views

Second level has the en-suite bedroom, open to balcony then at the end of the hall there is 2 other bedrooms with a jack and Jill bath between them, on of them faces the water with a door leading out to the balcony. bathroom has a large walk in closet and the room that has the door leading out to the balcony, it has a built in office room as well. Total bedrooms on this level is 3 bedrooms and 2 full bathrooms.

A Perfect Lakeside Community

Crown Lake is a scenic 650-acre lake, and the property is conveniently located across from a marina where you can launch your boat. The area features a swimming beach, a convenience store for supplies, and recreation like putt-putt golf, kayak rentals, and additional cabins for rent. This small, charming community is often referred to as a "piece of heaven" where time slows down, and every day feels like a vacation.

MORE INFO ONLINE:

wesellarkansas.com

Whether you're looking for a family home, a weekend getaway, or a property with rental potential, this one-of-a-kind lakefront home offers privacy, space, and unmatched views.

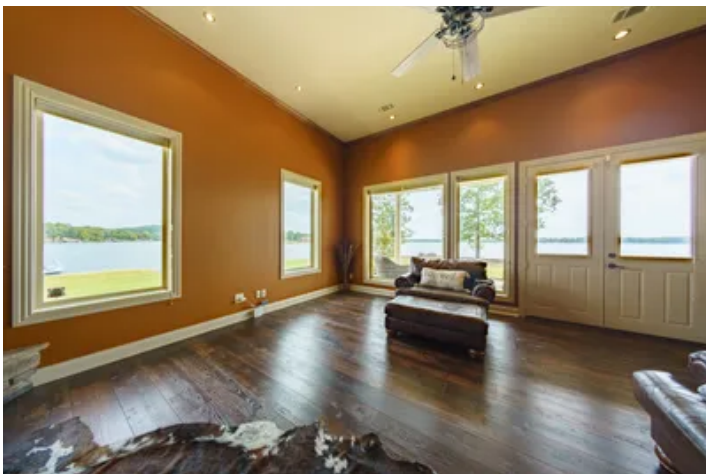
Schedule a Viewing

To experience this unique property in person, please give me a call. I'd be delighted to show you around and help you make this Crown Lake retreat your own.

Proudly listed with Mossy Oak Properties Selling Arkansas, [870-495-2123](tel:870-495-2123) . **Listing Agent and your Local Land Specialist, Pamela Welch, [870-897-0700](tel:870-897-0700)** . Equal Housing Opportunity. www.WeSellArkansas.com



4 Bedroom 3.5 Bathroom Home on Crown Lake with over 1 acre, Horseshoe Bend, Arkansas
Horseshoe Bend, AR / Izard County



4 Bedroom 3.5 Bathroom Home on Crown Lake with over 1 acre, Horseshoe Bend, Arkansas

LISTING REPRESENTATIVE

For more information contact:



Representative

Pamela Welch

Mobile

(870) 897-0700

Office

(870) 495-2123

Email

pwelch@mossyoakproperties.com

Address

8111 N. St. Louis

City / State / Zip

Cave City, AR 72521

NOTES

[illegible]

MORE INFO ONLINE:

wesellarkansas.com

This image shows a blank sheet of white paper with horizontal ruling lines. The lines are evenly spaced and extend across the width of the page. There are no margins, text, or other markings on the paper.



wesellarkansas.com

DISCLAIMERS

Information in this brochure is provided solely for information purposes and does not constitute an offer to sell or advertise real estate outside the states in which broker or agent licensed. The information presented has been obtained from sources deemed to be reliable, but is not guaranteed or warranted by the agent, broker, or the sellers of these properties. This offering is subject to errors, omissions, prior sale, price change, correction or withdrawal from the market without notice. All references to age, square footage, income, expenses, acreage, carrying capacity, and land classification, etc. are approximate. Prospective buyers are chargeable with and expected to conduct their own independent investigation of the information and the property and to rely only on those results. Sellers reserve the right to accept or reject any and all offers without liability to any buyer or cooperating broker.

Maps are provided for illustration purposes only, the accuracy is not warranted. Parcels on interactive maps are not adjusted to match aerial backgrounds. This information is for reference purposes only and is not a legal document. Data maps contain errors. The seller and seller's agent are making known to all potential buyers that there may be variations between the location of the existing fence lines and the legal description of the deeded property. Seller and seller's agent make no warranties with regard to the location of the fence lines in relationship to the deeded property lines, nor does the Seller make any warranties or representations with regard to the specific acreage contained within the fenced property lines. Seller is selling the property in an "as is" condition, which includes the location of the fences as they exist. Boundaries shown on the accompanying maps are approximate, based on county parcel data. The maps are not to scale. The accuracy of the maps is not guaranteed. Prospective buyers are encouraged to verify fence lines, deeded property lines and acreages using a licensed surveyor at their own expense.



Mossy Oak Properties Selling Arkansas

520 N Main
Cave City, AR 72521
(870) 495-2123
wesellarkansas.com



MORE INFO ONLINE:

wesellarkansas.com