

4650 sq ft +/- Heated/Cooled, 5 bedroom, 3.5 bath, 6.2 +/-
Acres, Sulphur Rock, AR
385 Charlotte Road
Sulphur Rock, AR 72579

\$474,900
6.200± Acres
Independence County



4650 sq ft +/- Heated/Cooled, 5 bedroom, 3.5 bath, 6.2 +/- Acres, Sulphur Rock, AR
Sulphur Rock, AR / Independence County

SUMMARY

Address

385 Charlotte Road

City, State Zip

Sulphur Rock, AR 72579

County

Independence County

Type

Residential Property

Latitude / Longitude

35.834856 / -91.437361

Taxes (Annually)

1974

Dwelling Square Feet

4650

Bedrooms / Bathrooms

5 / 3.5

Acreage

6.200

Price

\$474,900

Property Website

<https://www.mossyoakproperties.com/property/4650-sq-ft-heated-cooled-5-bedroom-3-5-bath-6-2-acres-sulphur-rock-ar-independence-arkansas/39649/>



4650 sq ft +/- Heated/Cooled, 5 bedroom, 3.5 bath, 6.2 +/- Acres, Sulphur Rock, AR
Sulphur Rock, AR / Independence County

PROPERTY DESCRIPTION

Gorgeous Farmhouse Style Home with **about 4650 sq ft, under roof, heated and cooled** with a **wrap-around porch on two sides** overlooking a **large stocked pond**, has a shop off to the side, and all this on **6 +/- Acres with a paved driveway!** This home sits on a hill with a nice, large 35 x 40 shop out to the side with plenty of room to work on vehicles, and woodwork, use for storage, and there is an insulated office area with hot/cold water to sink. This shop has a 4 car stall with extra loft storage. Electric to shop! When you walk into house, you will see a stunning stairway leading upstairs; the dining room is off to the left with a small bedroom or could be an office on the right. Straight in front, you will see a large living room with a wood-burning fireplace, with a master bedroom off one side and the kitchen the other side. You have a nice laundry/mud room with a wash sink, just off the kitchen, with a door leading out to the garage and one off out to the side of the house. The garage is a 2-car garage with two individual doors! There is a nice dog pen in the back. Nice French doors lead to the backyard from the living room. The living room is spacious; the kitchen is open, with lots of custom counter space and a kitchen island with an electric countertop stove, double ovens, and a large pantry off to the side with lots of shelving! Off the kitchen on one side is the laundry/mud room with a wash sink, but off the other side is a nice breakfast nook area large enough for a big table with lots of windows. The dining room is off the living room and is big enough for a large farm table. The master bedroom is large with a door that leads into the small room off the front entrance that can be a bedroom/office or maybe a nursery! This room you can access from a door inside the master bedroom or a door just as you enter the home at the bottom of the stairs. The master bathroom has large his and her custom vanities, jetted tub, and a walk-in shower! There is also a powder room off the living room for guests. This is all that is on the main level.

As you go up the stairs, you will see two bedrooms off each side with a jack-and-jill bathroom! Both rooms are large, with a ton of natural light and large closets. Very bright and open. New flooring in all but one room. There is one room with carpet.

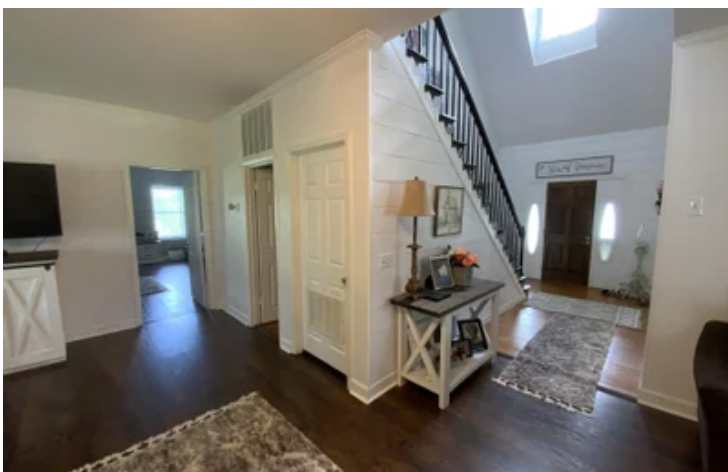
Down in the basement, you will have a large open area for a pool table, couch, and room to spread out! You also have a safe room, a storage room, and a full bedroom with a bath attached. There is a door leading outside, so you can enter from the outside-concrete floor in the basement.

This home has been painted on the inside throughout the house, and there is a shiplap on the walls in some rooms, giving you the farmhouse feel! New blinds on every window, new light fixtures throughout, and so much more! Outside of the house has been painted with custom wood pillars out front. The house has septic, trash pickup, Dots County Water, Entergy for electricity, and propane for gas. Central heat and air with dual control, all electric unless it drops below 32 degrees, then the gas will kick on. The shop sits off the side of the house with electricity; part of it is insulated with a sink with hot/cold water; the shop has two garage doors that roll up and a loft area for storage. Outside you have a pear and apple tree and plenty of room for a garden! The roof was put on in 2019 with architectural shingles. This FARMHOUSE STYLE HOME is GORGEOUS and a must-see. This area is 15 minutes outside Batesville, Arkansas, in Independence County.

Proudly listed with Mossy Oak Properties Strawberry River Land & Homes, [870-495-2123](tel:870-495-2123). Call or text Pamela Welch at [870-897-0700](tel:870-897-0700) to schedule a time to view this home and 6 +/- Acres! Equal housing opportunity. www.ArkansasLandAndHomes.us



4650 sq ft +/- Heated/Cooled, 5 bedroom, 3.5 bath, 6.2 +/- Acres, Sulphur Rock, AR
Sulphur Rock, AR / Independence County



**4650 sq ft +/- Heated/Cooled, 5 bedroom, 3.5 bath, 6.2 +/- Acres, Sulphur Rock, AR
Sulphur Rock, AR / Independence County**

LISTING REPRESENTATIVE

For more information contact:



Representative

Pamela Welch

Mobile

(870) 897-0700

Office

(870) 495-2123

Email

pwelch@mossyoakproperties.com

Address

520 N Main

City / State / Zip

Cave City, AR 72521

NOTES



MOSSY OAK.
PROPERTIES
Strawberry River Land & Homes
America's Land Specialist

MORE INFO ONLINE:

MossyOakProperties.com

This image shows a blank sheet of white paper with horizontal ruling lines. The lines are evenly spaced and run across the width of the page. There are no margins, text, or other markings on the paper.



DISCLAIMERS

Information in this brochure is provided solely for information purposes and does not constitute an offer to sell or advertise real estate outside the states in which broker or agent licensed. The information presented has been obtained from sources deemed to be reliable, is not guaranteed or warranted by the agent, broker, or the sellers of these properties. This offering is subject to errors, omissions, prior sale, price change, correction or withdrawal from the market without notice. All references to age, square footage, income, expenses, acreage, carrying capacity, and land classification, etc. are approximate. Prospective buyers are chargeable with and expected to conduct their own independent investigation of the information and the property and to rely only on those results. Sellers reserve the right to accept or reject any and all offers without liability to any buyer or cooperating broker.

Maps are provided for illustration purposes only, the accuracy is not warranted. Parcels on interactive maps are not adjusted to match aerial backgrounds. This information is for reference purposes only and is not a legal document. Data maps contain errors. The seller and seller's agent are making known to all potential buyers that there may be variations between the location of the existing fence lines and the legal description of the deeded property. Seller and seller's agent make no warranties with regard to the location of the fence lines in relation to the deeded property lines, nor does the Seller make any warranties or representations with regard to the specific acreage contained within the fenced property lines. Seller is selling the property in an "as is" condition, which includes the location of the fences as they exist. Boundaries shown on the accompanying maps are approximate, based on county parcel data. The maps are not to scale. The accuracy of the maps is not guaranteed. Prospective buyers are encouraged to verify fence lines, deeded property lines and acreages using a licensed surveyor at their own expense.

Mossy Oak Properties Strawberry River Land and Homes

520 N Main
Cave City, AR 72521
(870) 495-2123
MossyOakProperties.com

