

**Country Home on 6.5 +/- Acres Between Cave City & Strawberry AR | 2 Kitchens + Walkout Basement**  
1266 AR HWY 230  
Cave City, AR 72521

**\$245,000**  
6.5± Acres  
Sharp County



**Country Home on 6.5 +/- Acres Between Cave City & Strawberry AR | 2 Kitchens + Walkout Basement**  
**Cave City, AR / Sharp County**

**SUMMARY**

**Address**

1266 AR HWY 230

**City, State Zip**

Cave City, AR 72521

**County**

Sharp County

**Type**

Residential Property

**Latitude / Longitude**

35.937249 / -91.439572

**Dwelling Square Feet**

2,750

**Bedrooms / Bathrooms**

2 / 3

**Acreage**

6.5

**Price**

\$245,000

**Property Website**

<https://www.mossoakproperties.com/property/country-home-on-6-5-acres-between-cave-city-strawberry-ar-2-kitchens-walkout-basement/sharp/arkansas/105220/>



## Country Home on 6.5 +/- Acres Between Cave City & Strawberry AR | 2 Kitchens + Walkout Basement Cave City, AR / Sharp County

---

### **PROPERTY DESCRIPTION**

Welcome to this beautifully remodeled country home sitting on **6.5 +/- acres between Cave City and Strawberry, Arkansas**, conveniently located just about **6 miles from Cave City** and **7 miles from Strawberry**. Nestled on top of a hill and surrounded by mature trees, this property offers privacy, charm, and space while still being close to town.

As you turn off the highway and wind through the gorgeous wooded driveway, you immediately feel the peaceful setting this property offers. The home features approximately **2,750 square feet under roof**, including **2 bedrooms, 3 bathrooms, 2 living areas, 2 full kitchens, 4 bonus rooms**, and a **2-car garage**-making it ideal for a growing family, multigenerational living, or even an in-law suite setup.

Inside, country charm greets you from the moment you enter. The main level offers a welcoming foyer, spacious dining area with room for a large farmhouse table, and oversized windows bringing in abundant natural light. The kitchen features a beautiful **farm sink with views overlooking the backyard**, pantry space, and access to a covered porch area perfect for relaxing outdoors.

Just up a few steps is the main living area featuring a cozy fireplace, along with a large utility room and bathroom. Down the hallway, you'll find the primary suite with private bath along with an additional bedroom.

The fully renovated downstairs walkout basement offers incredible additional living space with:

- A second full kitchen
- Large second living area with fireplace
- Four bonus rooms currently used as bedrooms
- Walkout access to the garage and backyard

While the downstairs bonus rooms do not currently qualify as legal bedrooms due to window sizing, they offer tremendous flexibility and potential.

Outside, you'll find:

- A fenced side yard perfect for your fur babies
- Mature trees surrounding the property
- Peaceful hilltop setting
- Plenty of room to enjoy country living

The current owners are still completing some finishing touches including trim and exterior cleanup, but the majority of the remodel has already been completed, leaving room for you to add your own personal touches.

If you've been searching for a **home with acreage near Cave City or Strawberry Arkansas**, a **multigenerational home**, or a **country property with two living spaces**, this one is a must-see.

Proudly listed with **Mossy Oak Properties Selling Arkansas**, [870-495-2123](tel:870-495-2123)

**Listing Agent, Pamela Welch**, [870-897-0700](tel:870-897-0700)

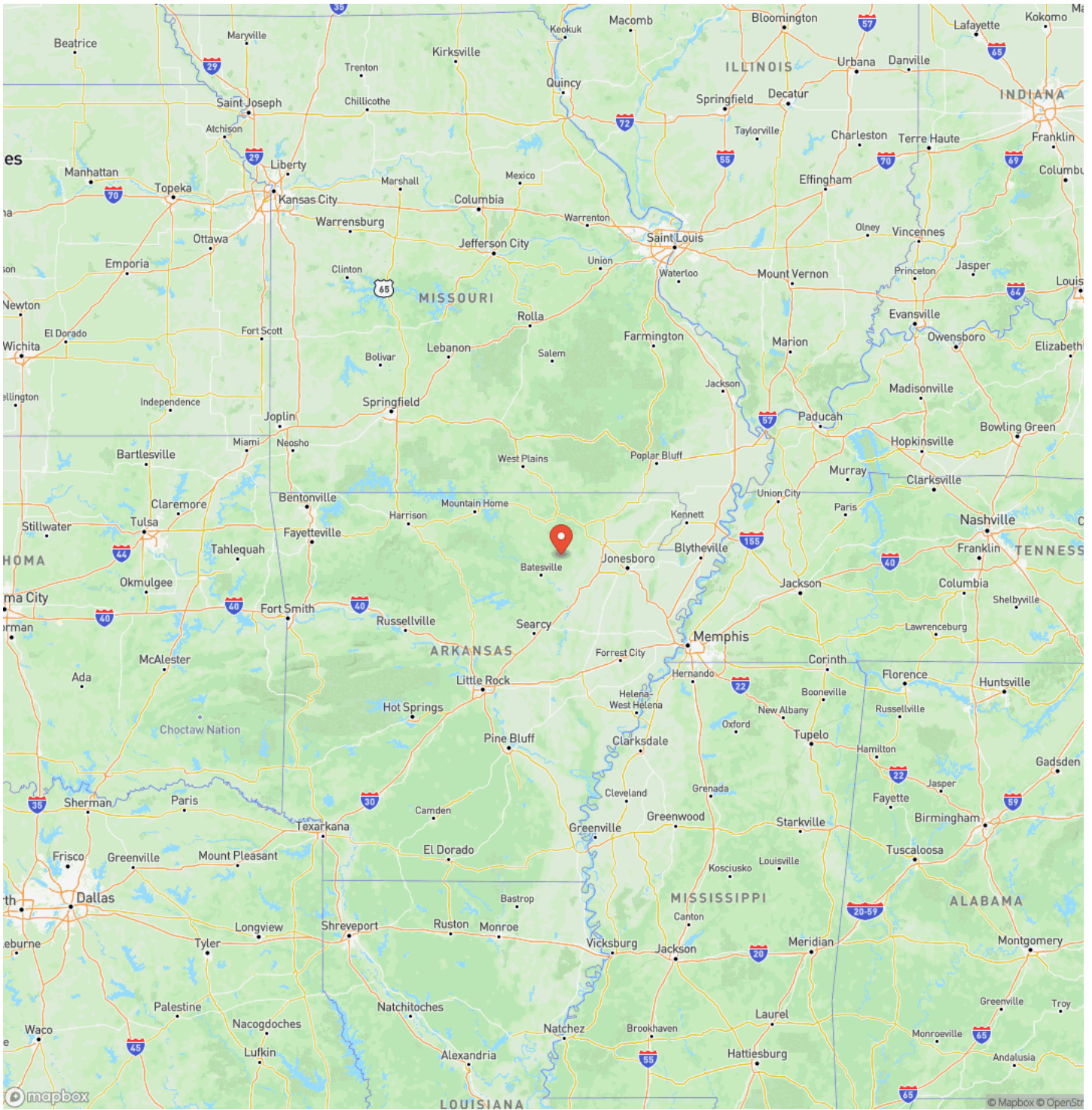
Equal Housing Opportunity, [www.WeSellArkansas.com](http://www.WeSellArkansas.com).

Country Home on 6.5 +/- Acres Between Cave City & Strawberry AR | 2 Kitchens + Walkout Basement  
Cave City, AR / Sharp County



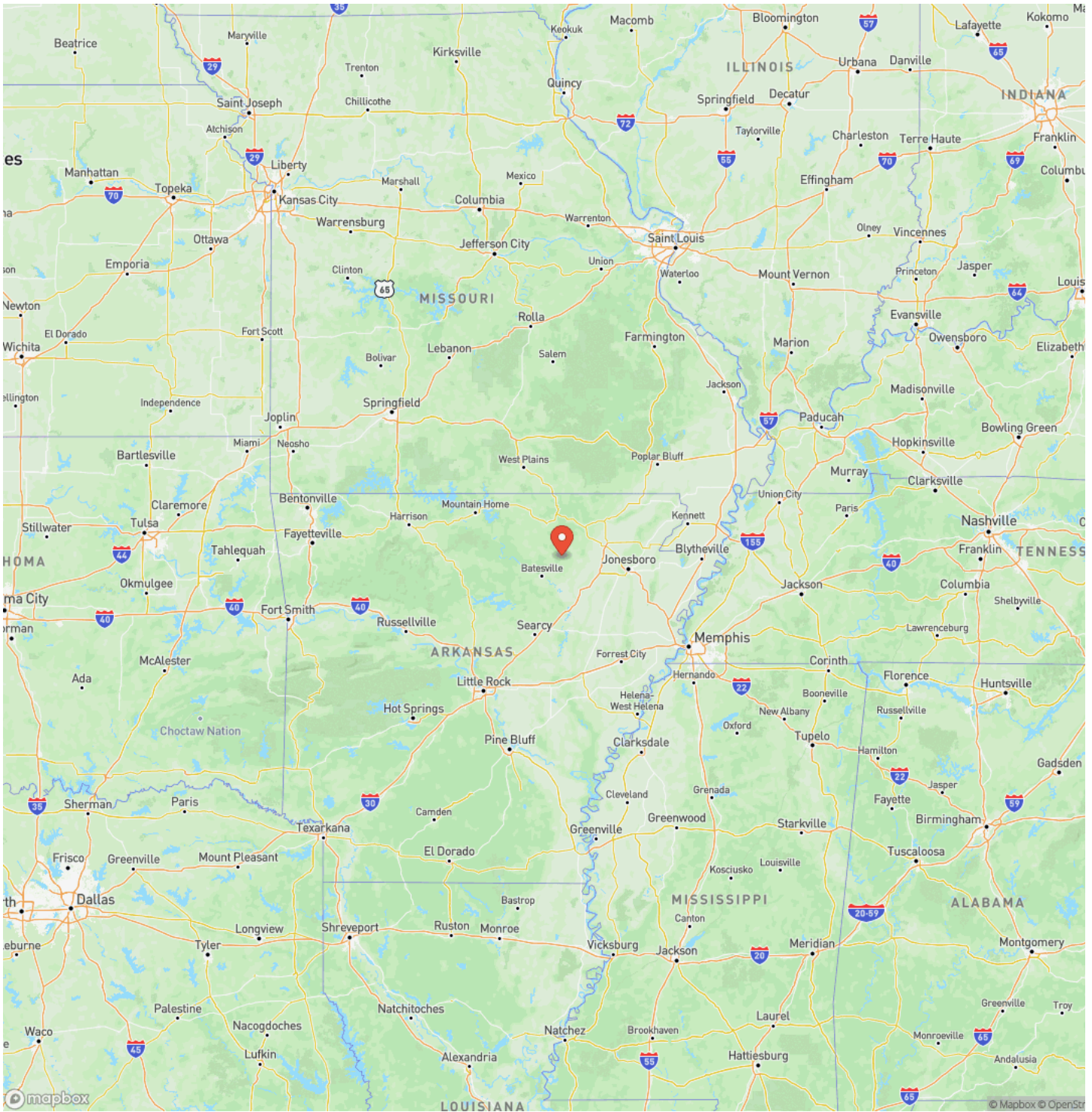
Country Home on 6.5 +/- Acres Between Cave City & Strawberry AR | 2 Kitchens + Walkout Basement  
Cave City, AR / Sharp County

## Locator Map



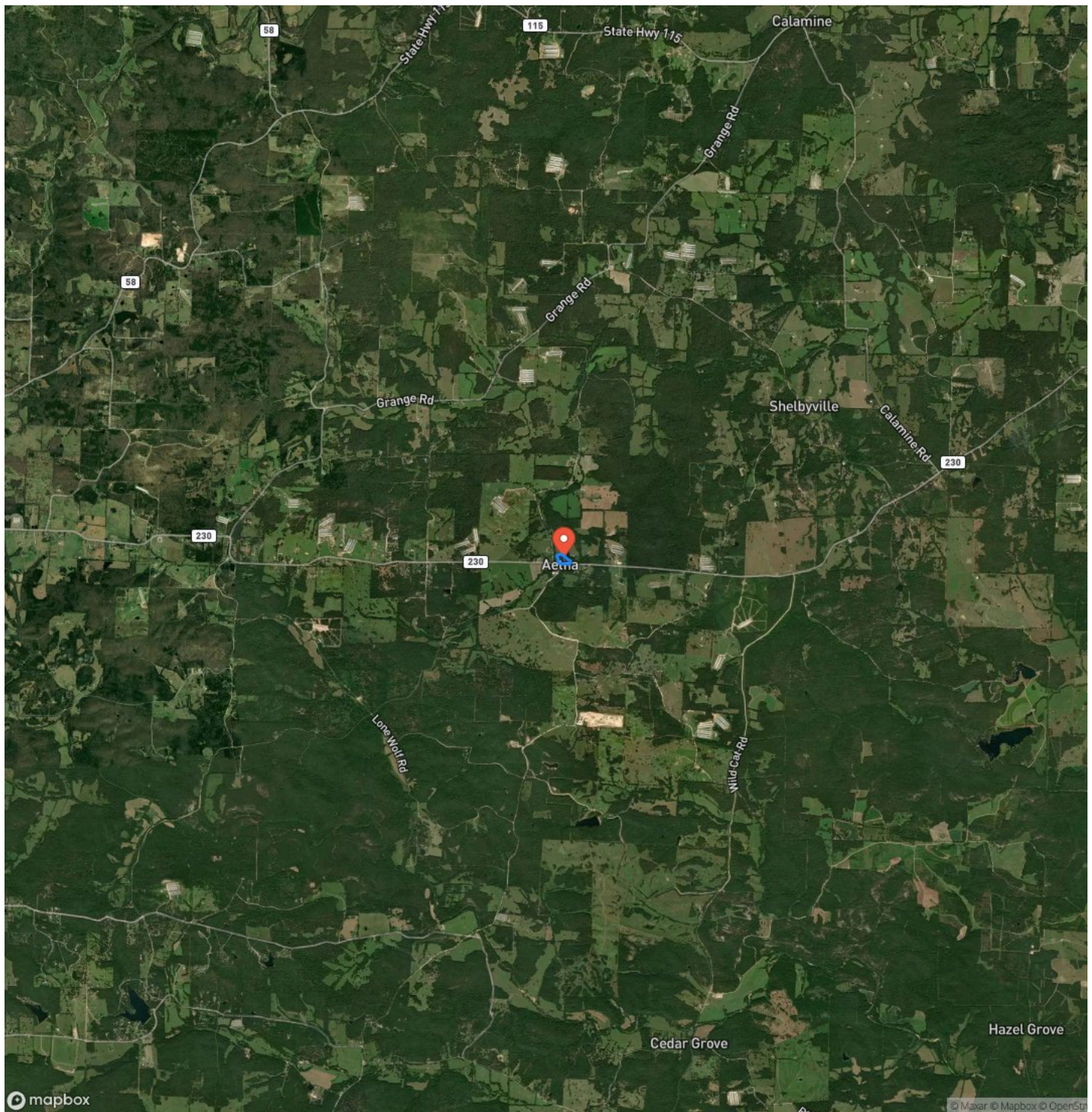
Country Home on 6.5 +/- Acres Between Cave City & Strawberry AR | 2 Kitchens + Walkout Basement  
Cave City, AR / Sharp County

## Locator Map



Country Home on 6.5 +/- Acres Between Cave City & Strawberry AR | 2 Kitchens + Walkout Basement  
Cave City, AR / Sharp County

## Satellite Map







## **DISCLAIMERS**

Information in this brochure is provided solely for information purposes and does not constitute an offer to sell or advertise real estate outside the states in which broker or agent licensed. The information presented has been obtained from sources deemed to be reliable, but is not guaranteed or warranted by the agent, broker, or the sellers of these properties. This offering is subject to errors, omissions, prior sale, price change, correction or withdrawal from the market without notice. All references to age, square footage, income, expenses, acreage, carrying capacity, and land classification, etc. are approximate. Prospective buyers are chargeable with and expected to conduct their own independent investigation of the information and the property and to rely only on those results. Sellers reserve the right to accept or reject any and all offers without liability to any buyer or cooperating broker.

Maps are provided for illustration purposes only, the accuracy is not warranted. Parcels on interactive maps are not adjusted to match aerial backgrounds. This information is for reference purposes only and is not a legal document. Data maps contain errors. The seller and seller's agent are making known to all potential buyers that there may be variations between the location of the existing fence lines and the legal description of the deeded property. Seller and seller's agent make no warranties with regard to the location of the fence lines in relationship to the deeded property lines, nor does the Seller make any warranties or representations with regard to the specific acreage contained within the fenced property lines. Seller is selling the property in an "as is" condition, which includes the location of the fences as they exist. Boundaries shown on the accompanying maps are approximate, based on county parcel data. The maps are not to scale. The accuracy of the maps is not guaranteed. Prospective buyers are encouraged to verify fence lines, deeded property lines and acreages using a licensed surveyor at their own expense.

---

**Mossy Oak Properties Selling Arkansas**

8111 N St Louis St

Cave City, AR 72521

(870) 495-2123

<https://wesellarkansas.com/>

---

