

**127 Total Acres, Wooded with 40 +/- Acres
of it Plantation Pine, Harrisburg, AR
BAY LN
Harrisburg, AR 72386**

\$298,500
127± Acres
Poinsett County



127 Total Acres, Wooded with 40 +/- Acres of it Plantation Pine, Harrisburg, AR Harrisburg, AR / Poinsett County

SUMMARY

Address

BAY LN

City, State Zip

Harrisburg, AR 72386

County

Poinsett County

Type

Undeveloped Land, Hunting Land, Recreational Land, Timberland

Latitude / Longitude

35.5244016 / -90.6595225

Taxes (Annually)

374

Acreage

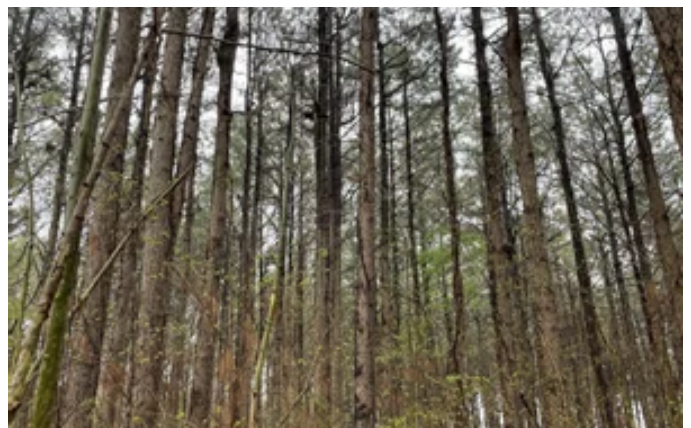
127

Price

\$298,500

Property Website

<https://www.mossyoakproperties.com/property/127-total-acres-wooded-with-40-acres-of-it-plantation-pine-harrisburg-ar-poinsett-arkansas/26982/>



PROPERTIES
Strawberry River Land & Homes
America's Land Specialist

127 Total Acres, Wooded with 40 +/- Acres of it Plantation Pine, Harrisburg, AR Harrisburg, AR / Poinsett County

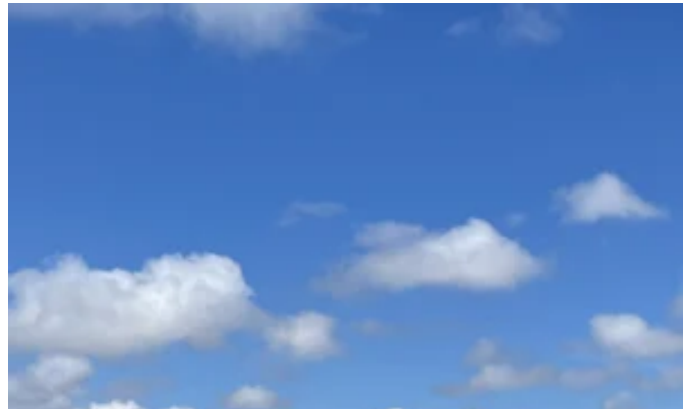
PROPERTY DESCRIPTION

This 127 +/- Acres is 4 miles southeast of Harrisburg, AR and 1/4 mile east of Lake Poinsett lying on the east side of Crowleys Ridge with old homesite that has Large Pecan and Magnolia Trees! Crowleys Ridge is made up of very unique topography. It is a narrow strip of hilly terrain sitting in the middle of the Mississippi Delta. Crowleys Ridge is approximately 4 miles wide and stretches 144 +/- miles long from northern tip of Arkansas to the Mississippi River near Marianna separating the Mississippi Delta from the Grand Prairie. This property consist of 40 +/- acres of 30 year old loblolly plantation pine located on the east side of Bay Lane in Harrisburg. This 40 +/- Acres makes a perfect home site, possible income from timber harvest or just a peaceful place to sit back and enjoy listening as the wind whistles through the pines. There is city water, electric and hard phone line on property. On the west side of Bay land and the north side of Dam road there is 57 +/- Acres of some of the best land scape that Crowleys Ridge has to offer. This hardwood tract is made up of large white oak and red oak and full of dogwood trees from the tiring hilltops to the deep ravines. This is truly a wildlife paradise! From the giant white tail deer that roam the ridge tops to the big tom turkeys strutting from hill to hill. There is also 31 +/- acres on the west side of Bay lane and south side of Dam road. This tract also consists of large white and red oak timber. All 3 of these tracts could be used for many different things from home sites to hunting, to making endless off road trails for horseback riding, walking, mountain biking to off road vehicles. Just for an interesting fact, Crowleys ridge has its own Arkansas Game and Fish Deer Zone which is zone 5. Some of Arkansas's largest whitetail deer has come from Crowleys Ridge, zone 5! With lake Poinsett only being a mile away you could always be fishing during the winter months! This is only about 30 minutes from Jonesboro, 40 minutes from Memphis and just a few miles from the center of Harrisburg, AR. Don't let this one get away! Vary Rare for property like this to come up in this area!! Call us today. Listed with Mossy Oak Properties Strawberry River & Home [870-495-2123](tel:870-495-2123). Listing agent Pamela Welch, [870-897-0700](tel:870-897-0700). Equal Housing Opportunity. Call us today to set up a time to view this property. www.ArkansasLandAndHomes.us



**127 Total Acres, Wooded with 40 +/- Acres of it Plantation Pine, Harrisburg, AR
Harrisburg, AR / Poinsett County**

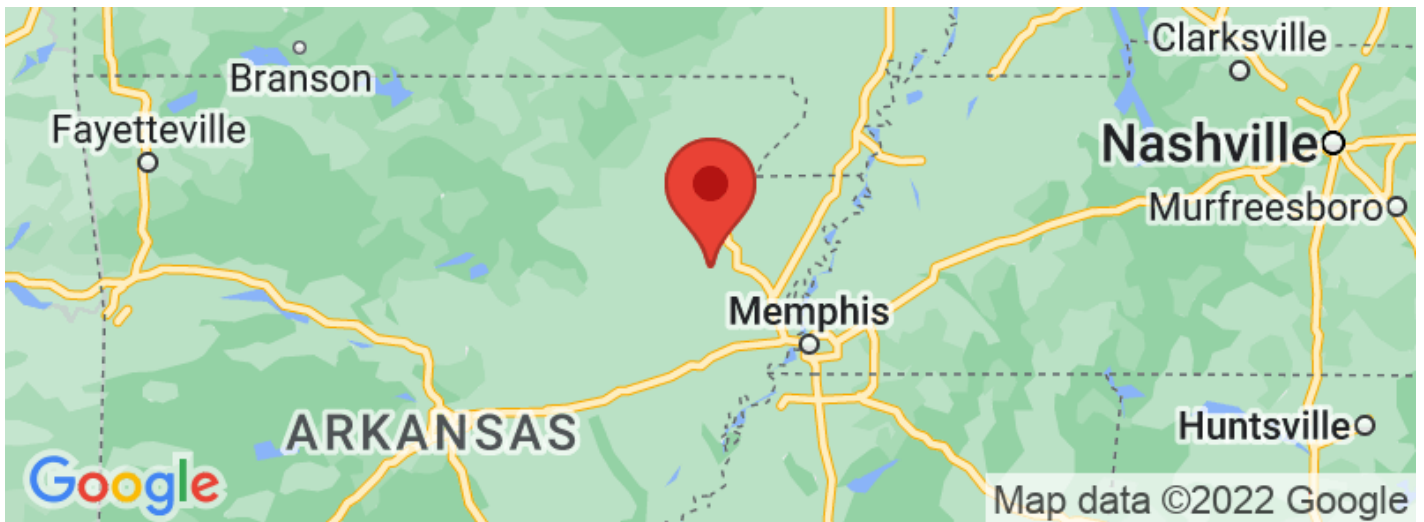




MOSSY OAK.
PROPERTIES
Strawberry River Land & Homes
America's Land Specialist

127 Total Acres, Wooded with 40 +/- Acres of it Plantation Pine, Harrisburg, AR
Harrisburg, AR / Poinsett County

Locator Maps



127 Total Acres, Wooded with 40 +/- Acres of it Plantation Pine, Harrisburg, AR
Harrisburg, AR / Poinsett County

Aerial Maps



127 Total Acres, Wooded with 40 +/- Acres of it Plantation Pine, Harrisburg, AR
Harrisburg, AR / Poinsett County

LISTING REPRESENTATIVE

For more information contact:



Representative

Pamela Welch

Mobile

(870) 897-0700

Office

(870) 495-2123

Email

pwelch@mossyoakproperties.com

Address

520 N Main

City / State / Zip

Cave City, AR 72521

NOTES



NOTES

[illegible]

DISCLAIMERS

Information in this brochure is provided solely for information purposes and does not constitute an offer to sell or advertise real estate outside the states in which broker or agent licensed. The information presented has been obtained from sources deemed to be reliable, but is not guaranteed or warranted by the agent, broker, or the sellers of these properties. This offering is subject to errors, omissions, prior sale, price change, correction or withdrawal from the market without notice. All references to age, square footage, income, expenses, acreage, carrying capacity, and land classification, etc. are approximate. Prospective buyers are chargeable with and expected to conduct their own independent investigation of the information and the property and to rely only on those results. Sellers reserve the right to accept or reject any and all offers without liability to any buyer or cooperating broker.

Maps are provided for illustration purposes only, the accuracy is not warranted. Parcels on interactive maps are not adjusted to match aerial backgrounds. This information is for reference purposes only and is not a legal document. Data maps contain errors. The seller and seller's agent are making known to all potential buyers that there may be variations between the location of the existing fence lines and the legal description of the deeded property. Seller and seller's agent make no warranties with regard to the location of the fence lines in relationship to the deeded property lines, nor does the Seller make any warranties or representations with regard to the specific acreage contained within the fenced property lines. Seller is selling the property in an "as is" condition, which includes the location of the fences as they exist. Boundaries shown on the accompanying maps are approximate, based on county parcel data. The maps are not to scale. The accuracy of the maps is not guaranteed. Prospective buyers are encouraged to verify fence lines, deeded property lines and acreages using a licensed surveyor at their own expense.



Mossy Oak Properties Strawberry River Land and Homes

520 N Main

Cave City, AR 72521

(870) 495-2123

MossyOakProperties.com



MORE INFO ONLINE:

MossyOakProperties.com