

House, 5 bedrooms, 3 Bath, 2 +/- Acres, Poinsett County,
Fisher, Arkansas
5235 Neil Rd
Fisher, AR 72429

\$274,900
2± Acres
Poinsett County



House, 5 bedrooms, 3 Bath, 2 +/- Acres, Poinsett County, Fisher, Arkansas
Fisher, AR / Poinsett County

SUMMARY

Address

5235 Neil Rd

City, State Zip

Fisher, AR 72429

County

Poinsett County

Type

Residential Property

Latitude / Longitude

35.550792 / -90.943838

Dwelling Square Feet

2850

Bedrooms / Bathrooms

5 / 3

Acreage

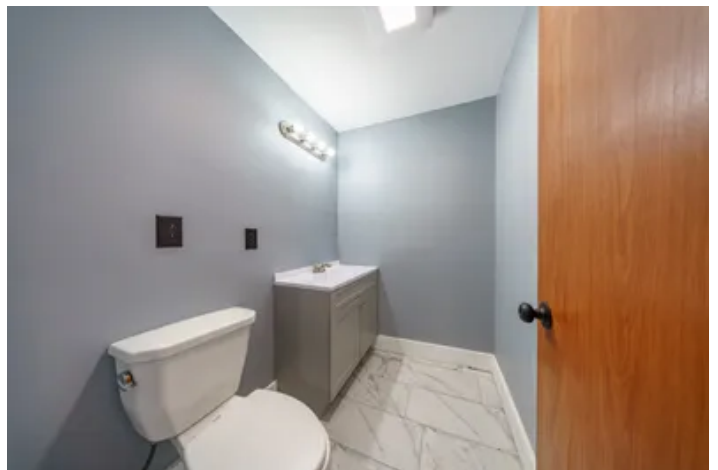
2

Price

\$274,900

Property Website

<https://www.mossyoakproperties.com/property/house-5-bedrooms-3-bath-2-acres-poinsett-county-fisher-arkansas-poinsett-arkansas/86838/>



PROPERTY DESCRIPTION

Spacious 5-Bedroom Country Home – Perfect for a Duck Lodge, Family Retreat, or Peaceful Living Near Waldenburg, AR

If you're looking for space, comfort, and a perfect rural setting—this **newly remodeled home just 1 mile south of Waldenburg, Arkansas** may be just what you've been searching for. Whether you're establishing a **duck club lodge**, planning a **family retreat**, or dreaming of a peaceful life in the country, this property offers flexibility, functionality, and a beautiful setting.

Situated on **2.13 shaded acres**, the home is surrounded by mature trees, providing a private, scenic atmosphere year-round. With approximately **3,500 square feet under roof**, this spacious home offers room for everyone and everything. There are **approximately 2,850± square feet of heated and cooled space**, making it ideal for large families, hunting groups, or anyone needing ample room.

Home Features & Layout:

- **Main Level (~1,885± sq ft):**
 - Large **primary bedroom** with space for king-sized furniture
 - Two additional spacious bedrooms
 - A **generous living room** with open flow into the kitchen and dining area
 - Cozy **den with fireplace**, perfect for relaxing after a long day
 - **Mudroom/laundry area** with a full bath—ideal for cleaning up after hunting or farm work
 - Oversized pantry and gear storage space just off the **attached carport**
 - **Upper Level (~960± sq ft):**
 - Two more large bedrooms
 - **Second living room/bonus area**
 - Full bathroom—creating the perfect setup for guests, kids, or hunting buddies
-

Outbuildings & Property Features:

- **Attached two-car carport**
 - **Separate carport**
 - **Brick shop**—ideal for equipment or hobby work
 - **Tin storage building** for boats, ATVs, tools, and more
 - **Ample parking** for guests, trailers, or hunting vehicles
-

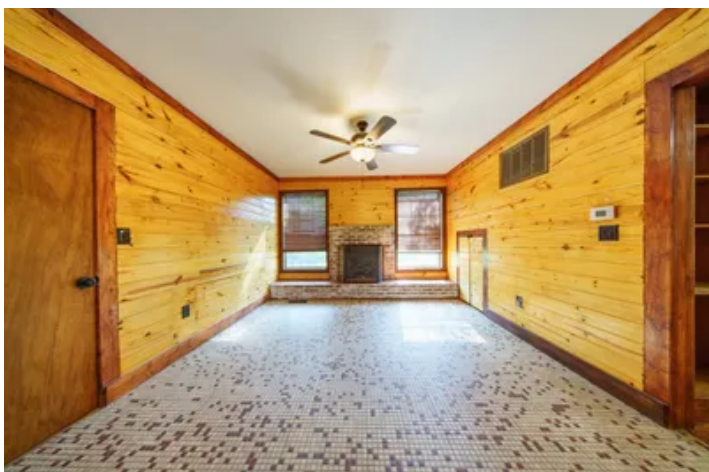
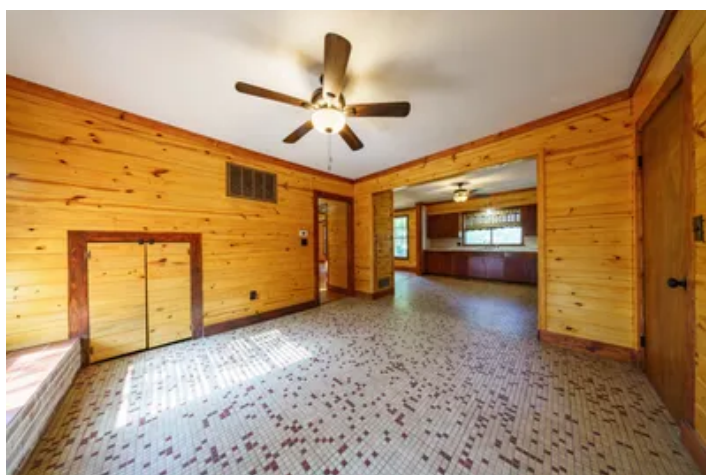
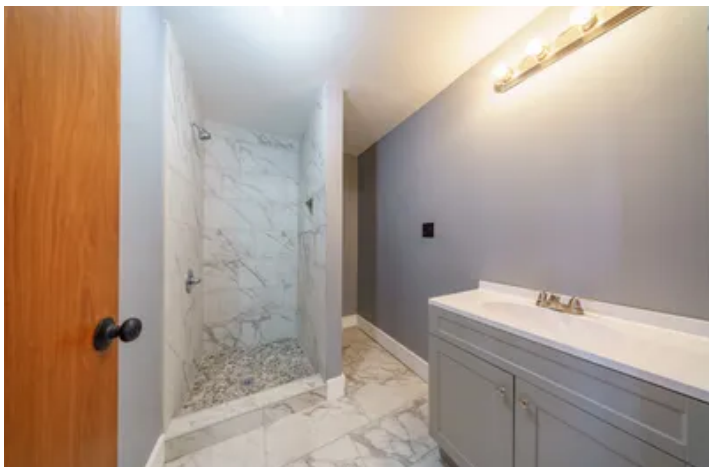
This property is **move-in ready** and loaded with potential. Located just minutes from **prime duck hunting ground**, it's ideal for outfitters or private clubs wanting a base lodge in one of Arkansas's premier flyways. However, it's equally suitable for a **younger couple**

just getting started, multi-generational family, or anyone seeking **quiet country living** with space to grow and play.

With its **versatile layout, rural charm, and prime location**, this is the kind of opportunity that rarely comes along. See floor plan attached!

For more information or to schedule a showing, contact our office at Mossy Oak Properties Selling Arkansas, [870-495-2123](tel:870-495-2123) or Pamela Welch at [870-897-0700](tel:870-897-0700). Equal housing opportunity. www.WeSellArkansas.com

House, 5 bedrooms, 3 Bath, 2 +/- Acres, Poinsett County, Fisher, Arkansas
Fisher, AR / Poinsett County



House, 5 bedrooms, 3 Bath, 2 +/- Acres, Poinsett County, Fisher, Arkansas
Fisher, AR / Poinsett County

LISTING REPRESENTATIVE

For more information contact:



Representative

Pamela Welch

Mobile

(870) 897-0700

Office

(870) 495-2123

Email

pwelch@mossyoakproperties.com

Address

8111 N. St. Louis

City / State / Zip

NOTES

[illegible]

MORE INFO ONLINE:

wesellarkansas.com

This image shows a blank sheet of white paper with horizontal ruling lines. The lines are evenly spaced and extend across the width of the page. There are no margins, text, or other markings on the paper.



wesellarkansas.com

DISCLAIMERS

Information in this brochure is provided solely for information purposes and does not constitute an offer to sell or advertise real estate outside the states in which broker or agent licensed. The information presented has been obtained from sources deemed to be reliable, but is not guaranteed or warranted by the agent, broker, or the sellers of these properties. This offering is subject to errors, omissions, prior sale, price change, correction or withdrawal from the market without notice. All references to age, square footage, income, expenses, acreage, carrying capacity, and land classification, etc. are approximate. Prospective buyers are chargeable with and expected to conduct their own independent investigation of the information and the property and to rely only on those results. Sellers reserve the right to accept or reject any and all offers without liability to any buyer or cooperating broker.

Maps are provided for illustration purposes only, the accuracy is not warranted. Parcels on interactive maps are not adjusted to match aerial backgrounds. This information is for reference purposes only and is not a legal document. Data maps contain errors. The seller and seller's agent are making known to all potential buyers that there may be variations between the location of the existing fence lines and the legal description of the deeded property. Seller and seller's agent make no warranties with regard to the location of the fence lines in relationship to the deeded property lines, nor does the Seller make any warranties or representations with regard to the specific acreage contained within the fenced property lines. Seller is selling the property in an "as is" condition, which includes the location of the fences as they exist. Boundaries shown on the accompanying maps are approximate, based on county parcel data. The maps are not to scale. The accuracy of the maps is not guaranteed. Prospective buyers are encouraged to verify fence lines, deeded property lines and acreages using a licensed surveyor at their own expense.

Mossy Oak Properties Selling Arkansas

8111 N St Louis St
Cave City, AR 72521
(870) 495-2123
wesellarkansas.com

