

40+/- Acres, Hunting Property, Wooded, Ash Flat,
Arkansas
Dry Bone Rd
Ash Flat, AR 72513

\$99,000
40± Acres
Sharp County



40+/- Acres, Hunting Property, Wooded, Ash Flat, Arkansas
Ash Flat, AR / Sharp County

SUMMARY

Address

Dry Bone Rd

City, State Zip

Ash Flat, AR 72513

County

Sharp County

Type

Undeveloped Land, Recreational Land

Latitude / Longitude

36.164197 / -91.634828

Taxes (Annually)

63

Acreage

40

Price

\$99,000

Property Website

<https://www.mossyoakproperties.com/property/40-acres-hunting-property-wooded-ash-flat-arkansas-sharp-arkansas/60015/>



MORE INFO ONLINE:

MossyOakProperties.com

40+/- Acres, Hunting Property, Wooded, Ash Flat, Arkansas

Ash Flat, AR / Sharp County

PROPERTY DESCRIPTION

Hunting Land in the Ozarks consisting of 40 +/- Wooded Acres

For those seeking the ultimate hunting retreat, this exceptional property offers a prime location just a few miles from Ash Flat, Arkansas, in the heart of Sharp County. Nestled in the scenic Ozarks, this land provides the perfect combination of natural beauty and practical amenities.

Spanning a substantial acreage, the property boasts dense woods teeming with wildlife, making it an ideal spot for hunting enthusiasts. The wooded terrain offers plenty of cover for deer, turkey, and other game, ensuring an immersive and fruitful hunting experience. The sounds of nature and the rustle of leaves underfoot will become a familiar and welcome backdrop as you explore your private hunting grounds.

Fronting a gravel road, the property ensures easy access while maintaining a secluded and peaceful atmosphere. Whether you're arriving for a weekend getaway or setting up a permanent hunting lodge, the convenient road frontage simplifies transportation of gear and equipment.

Essential utilities are within close reach, with electricity and water available near the property. This proximity allows for straightforward connection to power and water services, making it easier to establish a comfortable base camp or even a permanent residence. Imagine having all the comforts of home while being surrounded by the rugged beauty of the Ozarks.

Just a few miles away lies the charming town of Ash Flat, providing convenient access to supplies, dining, and other amenities. Despite its proximity to town, the property remains a tranquil haven, offering the best of both worlds—solitude and convenience.

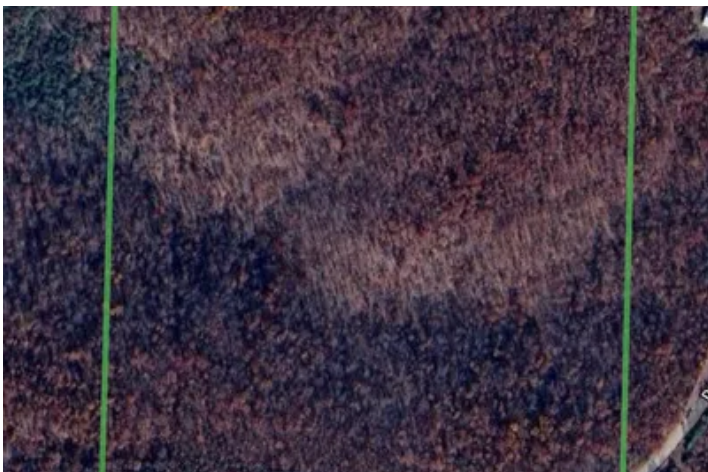
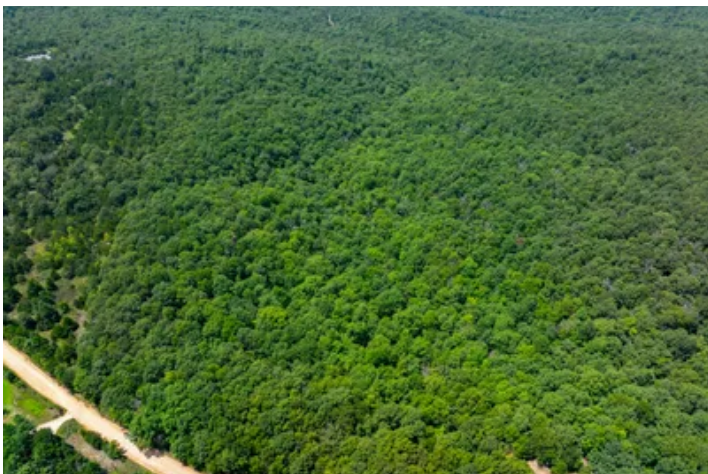
This hunting land in the Ozarks is more than just a piece of property; it's a gateway to endless outdoor adventures and a sanctuary for nature lovers. Whether you're an avid hunter, a nature enthusiast, or simply looking for a serene escape from the hustle and bustle, this land promises to deliver an unparalleled experience.

Don't miss out on this rare opportunity to own a slice of hunting paradise in the Ozarks, complete with wooded beauty, gravel road frontage, and essential utilities nearby.

Proudly listed with Mossy Oak Properties Selling Arkansas, [870-495-2123](tel:870-495-2123) . Listing Agent and your Local Land Specialist, Pamela Welch, [870-897-0700](tel:870-897-0700) . Equal Housing Opportunity. www.WeSellArkansas.com



40+/- Acres, Hunting Property, Wooded, Ash Flat, Arkansas
Ash Flat, AR / Sharp County



MORE INFO ONLINE:

MossyOakProperties.com

**40+/- Acres, Hunting Property, Wooded, Ash Flat, Arkansas
Ash Flat, AR / Sharp County**

LISTING REPRESENTATIVE

For more information contact:



Representative

Pamela Welch

Mobile

(870) 897-0700

Office

(870) 495-2123

Email

pwelch@mossyoakproperties.com

Address

8111 N. St. Louis

City / State / Zip

Cave City, AR 72521

NOTES



MORE INFO ONLINE:

MossyOakProperties.com

[illegible]

DISCLAIMERS

Information in this brochure is provided solely for information purposes and does not constitute an offer to sell or advertise real estate outside the states in which broker or agent licensed. The information presented has been obtained from sources deemed to be reliable, but is not guaranteed or warranted by the agent, broker, or the sellers of these properties. This offering is subject to errors, omissions, prior sale, price change, correction or withdrawal from the market without notice. All references to age, square footage, income, expenses, acreage, carrying capacity, and land classification, etc. are approximate. Prospective buyers are chargeable with and expected to conduct their own independent investigation of the information and the property and to rely only on those results. Sellers reserve the right to accept or reject any and all offers without liability to any buyer or cooperating broker.

Maps are provided for illustration purposes only, the accuracy is not warranted. Parcels on interactive maps are not adjusted to match aerial backgrounds. This information is for reference purposes only and is not a legal document. Data maps contain errors. The seller and seller's agent are making known to all potential buyers that there may be variations between the location of the existing fence lines and the legal description of the deeded property. Seller and seller's agent make no warranties with regard to the location of the fence lines in relationship to the deeded property lines, nor does the Seller make any warranties or representations with regard to the specific acreage contained within the fenced property lines. Seller is selling the property in an "as is" condition, which includes the location of the fences as they exist. Boundaries shown on the accompanying maps are approximate, based on county parcel data. The maps are not to scale. The accuracy of the maps is not guaranteed. Prospective buyers are encouraged to verify fence lines, deeded property lines and acreages using a licensed surveyor at their own expense.



Mossy Oak Properties Selling Arkansas

520 N Main
Cave City, AR 72521
(870) 495-2123
MossyOakProperties.com

