

**750 +/- Acre Working Cattle Ranch with Strawberry
River on property, Two Homes & Turn-Key Facilities –
Fulton County, Arkansas**
717 Green Valley Lane
Viola, AR 72583

\$2,485,000
750± Acres
Fulton County



750 +/- Acre Working Cattle Ranch with Strawberry River on property, Two Homes & Turn-Key Facilities – Fulton County, Arkansas
Viola, AR / Fulton County

SUMMARY

Address

717 Green Valley Lane

City, State Zip

Viola, AR 72583

County

Fulton County

Type

Recreational Land, Residential Property, Hunting Land

Latitude / Longitude

36.350928 / -91.922117

Dwelling Square Feet

2,289

Bedrooms / Bathrooms

4 / 3

Acreage

750

Price

\$2,485,000

Property Website

<https://www.mossoakproperties.com/property/750-acre-working-cattle-ranch-with-strawberry-river-on-property-two-homes-turn-key-facilities-fulton-county-arkansas/fulton/arkansas/92844/>



750 +/- Acre Working Cattle Ranch with Strawberry River on property, Two Homes & Turn-Key Facilities – Fulton County, Arkansas
Viola, AR / Fulton County

PROPERTY DESCRIPTION

Turn-Key Ozark Cattle Ranch for Sale - 750+/- Acres with Home, Guest House & Private Lake | Minutes from Mountain Home & Ash Flat, AR

Work cattle all day, then unwind on your deck overlooking your private lake - grill dinner at sunset or drop a line and go fishing. This is more than a ranch...it's the lifestyle everyone dreams about.

Introducing **The Ultimate Ozark Cattle Ranch**, a premier **750 +/- acre turn-key cattle and hay operation** in Fulton County, Arkansas. With a **main home, guest house, barns, working pens, cross-fenced pastures, and water in every direction**, this ranch is fully equipped for immediate livestock production. Rarely does a property combine this level of **function, beauty, and convenience** - all just minutes from **Mountain Home, Ash Flat, and essential amenities**.

A Premier Working Cattle Ranch - Move-In Ready for You and Your Herd

Built for efficiency and long-term productivity, this ranch offers a near-perfect blend of **rolling pasture, fertile hay ground, timber, and abundant live water**. Every acre is thoughtfully laid out to maximize grazing, rotation, and ease of management.

Property Highlights

- **750+/- Acres** of pasture, hay fields, and timberland
- **Turn-key cattle infrastructure** already in place
- **Solar-powered gated entry** off Green Valley Road
- **Fully fenced & cross-fenced** with water in every section
- **Multiple barns & outbuildings**
- **Working corrals, holding pens, and cattle-handling facilities**
- **Roads and trails** throughout for easy herd and equipment access
- **Marketable timber** providing shade and potential income

Bring your livestock - this operation is ready for cattle **on day one**.

Unmatched Water Resources & Natural Ozark Beauty

Water is one of the ranch's greatest strengths. Every pasture features a reliable water source - whether a **pond, spring, creek, or live-water frontage on the Strawberry River** (not a large river, just is the begging of where the Strawberry River starts). Here, the Strawberry River begins as a crystal-clear stream, providing flowing water without the maintenance headaches of high fencing.

This ranch also attracts abundant **deer and turkey**, making it a dream property for ranchers who enjoy hunting and outdoor recreation. Could also be great for those who enjoy quail hunting! Lots of hunting potential on this property!

Main Home - Overlooking Your Private Lake

The primary residence sits high on the landscape, capturing panoramic lake and ranch views. With **4 bedrooms and 3 baths**, this home offers comfort, space, and modern updates - and will be move-in ready for new owners.

Main Home Features

- Large living room with **gas-log fireplace** (possibly could be converted back to wood-burning) All with Lake Views
- Formal living room off the front door
- Bright kitchen and formal dining area with lake views
- **Primary suite** with clawfoot tub, sitting area & triple closets
- **Heated/cooled basement**, framed and ready for finishing
- **Expansive back deck** overlooking the private lake - perfect for sunrise coffee or sunset dinners
- Newer flooring, exterior doors, custom mantle & updated finishes
- **Fiber internet**, central HVAC, two backup gas furnaces
- On-demand and electric water heaters
- **Owned propane tanks** | **NAEC** electric service
- Home is empty and MOVE IN READY

Guest House - Perfect for Family, Ranch Hands, or Airbnb

Ideal for multigenerational living or on-site help, the guest home features:

- **2 bedrooms, 1 bath**
- Spacious living room with **wood-burning fireplace**
- Efficient kitchen with lake views
- Large windows showcasing Ozark scenery
- Low-maintenance design ready for full-time or part-time use

Ranch Improvements Built for Real Working Efficiency

This is a rancher's dream setup - designed to keep your operation running smoothly year-round.

Infrastructure Includes:

- **Large shop** with concrete floors, roll-up doors & welder wiring
- **Hay barns and machine sheds** with electric service
- **Cross-fencing & rotational grazing system** ready to go
- Multiple **80+ acre pastures** for hay production or expansion
- **Strong road system** for access across the entire ranch

Everything has been maintained with long-term productivity and durability in mind.

Why Ranchers Love This Property

- **Turn-key operation** - fully functional from day one

- **Reliable water in every pasture** - ponds, springs, Strawberry River
- **Low-maintenance, high-function design**
- **Two homes** - ideal for ranch help or family
- **Minutes from Mountain Home & Ash Flat**
- **Secluded yet convenient**
- **Beautiful, income-producing land**

Whether you're expanding your operation, investing in premier Arkansas farmland, or building a legacy ranch for generations, this property checks every box.

Prime Location - Privacy Without Isolation

Located in sought-after **Fulton County**, this ranch offers peaceful seclusion while still being close to:

- Mountain Home, AR
- Ash Flat, AR
- Shopping, schools & medical facilities
- Feed stores & equipment suppliers
- Major highways

This is the ideal blend of country privacy and modern convenience.

Schedule Your Private Tour of this Ozark Legacy Ranch

Opportunities like this - **a complete, turn-key cattle ranch with two homes and a private lake** - are almost impossible to find in today's market.

Don't miss the chance to own one of the **most functional and scenic working ranches in the Ozarks**.

Pamela Welch, Broker and Land Specialist - Mossy Oak Properties Selling Arkansas

Cell: [870-897-0700](tel:870-897-0700) | Office: [870-495-2123](tel:870-495-2123)

Arlon Welch, Land Specialist: [870-897-9080](tel:870-897-9080)

www.WeSellArkansas.com

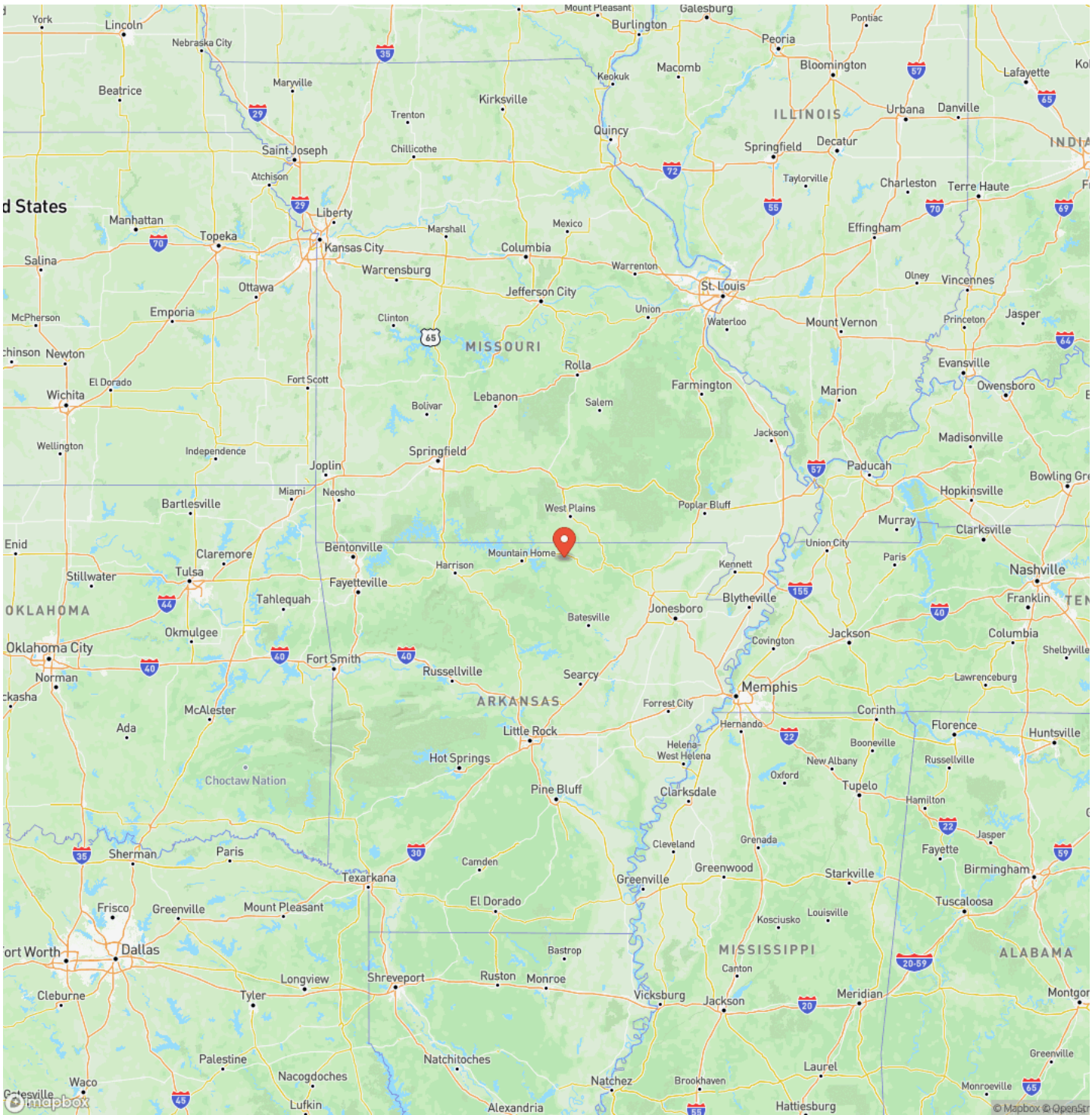
Equal Housing Opportunity

750 +/- Acre Working Cattle Ranch with Strawberry River on property, Two Homes & Turn-Key Facilities – Fulton County, Arkansas
Viola, AR / Fulton County



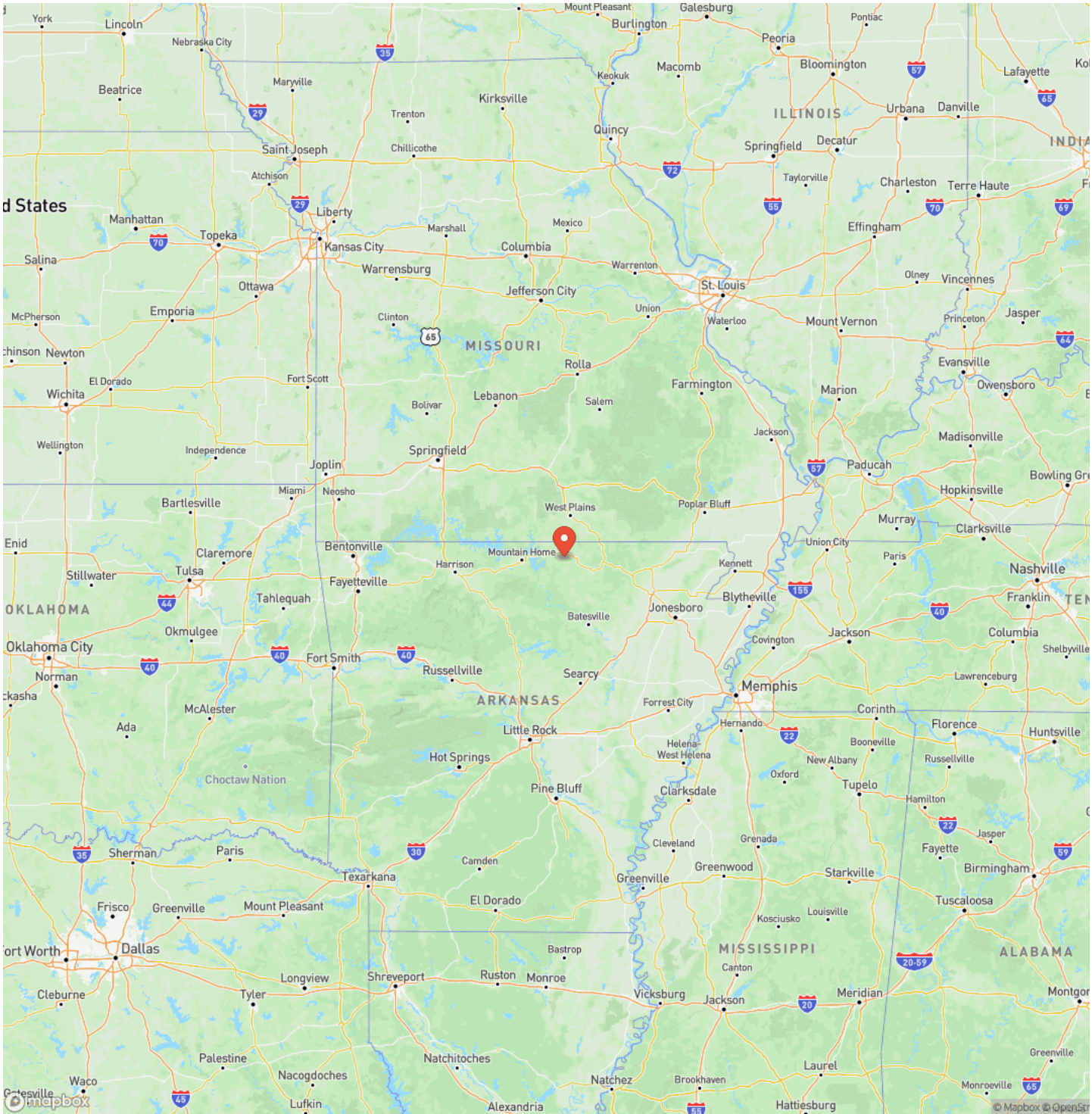
750 +/- Acre Working Cattle Ranch with Strawberry River on property, Two Homes & Turn-Key Facilities – Fulton County, Arkansas
Viola, AR / Fulton County

Locator Map



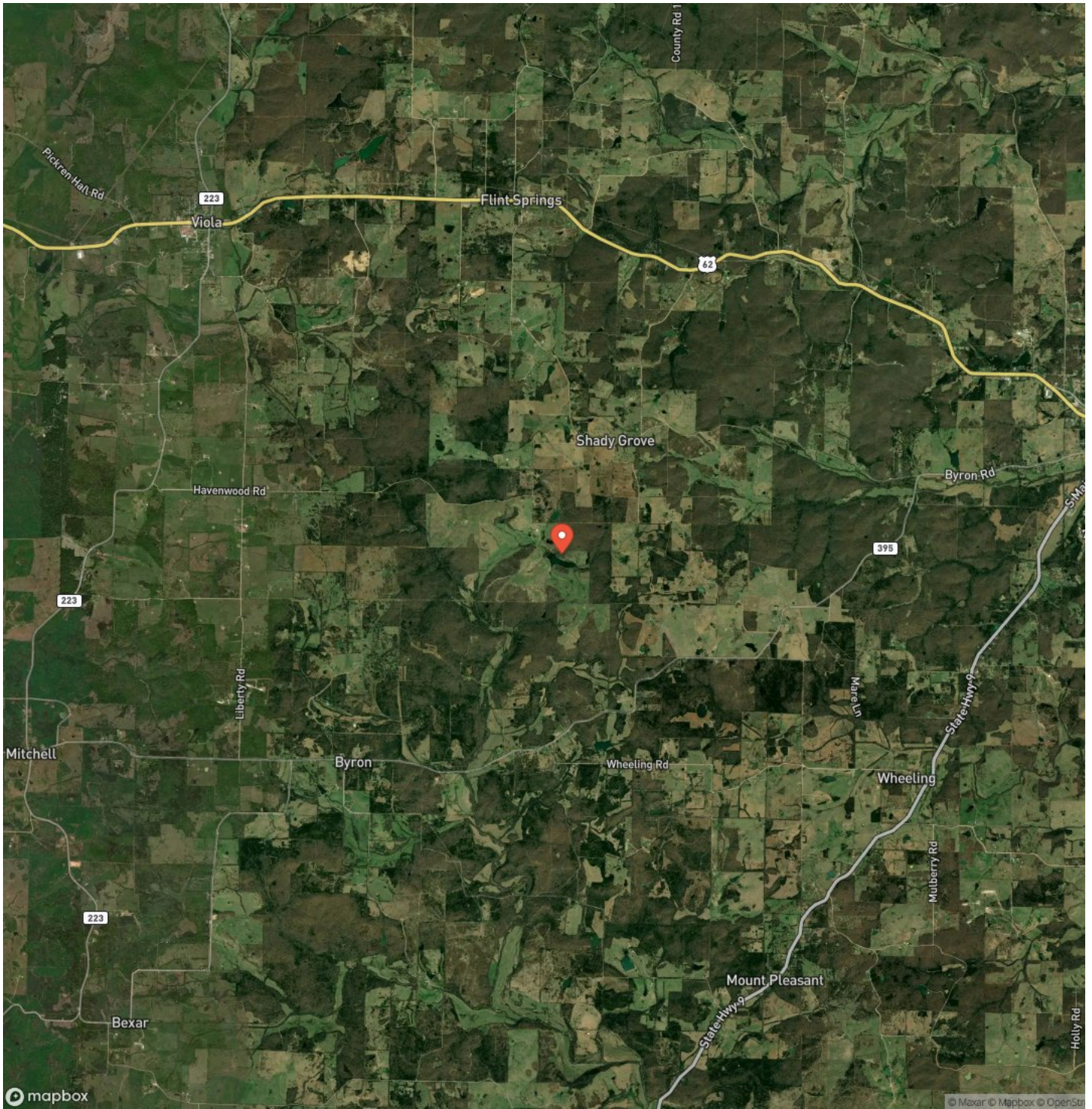
750 +/- Acre Working Cattle Ranch with Strawberry River on property, Two Homes & Turn-Key Facilities – Fulton County, Arkansas
Viola, AR / Fulton County

Locator Map



750 +/- Acre Working Cattle Ranch with Strawberry River on property, Two Homes & Turn-Key Facilities – Fulton County, Arkansas
Viola, AR / Fulton County

Satellite Map



DISCLAIMERS

Information in this brochure is provided solely for information purposes and does not constitute an offer to sell or advertise real estate outside the states in which broker or agent licensed. The information presented has been obtained from sources deemed to be reliable, but is not guaranteed or warranted by the agent, broker, or the sellers of these properties. This offering is subject to errors, omissions, prior sale, price change, correction or withdrawal from the market without notice. All references to age, square footage, income, expenses, acreage, carrying capacity, and land classification, etc. are approximate. Prospective buyers are chargeable with and expected to conduct their own independent investigation of the information and the property and to rely only on those results. Sellers reserve the right to accept or reject any and all offers without liability to any buyer or cooperating broker.

Maps are provided for illustration purposes only, the accuracy is not warranted. Parcels on interactive maps are not adjusted to match aerial backgrounds. This information is for reference purposes only and is not a legal document. Data maps contain errors. The seller and seller's agent are making known to all potential buyers that there may be variations between the location of the existing fence lines and the legal description of the deeded property. Seller and seller's agent make no warranties with regard to the location of the fence lines in relationship to the deeded property lines, nor does the Seller make any warranties or representations with regard to the specific acreage contained within the fenced property lines. Seller is selling the property in an "as is" condition, which includes the location of the fences as they exist. Boundaries shown on the accompanying maps are approximate, based on county parcel data. The maps are not to scale. The accuracy of the maps is not guaranteed. Prospective buyers are encouraged to verify fence lines, deeded property lines and acreages using a licensed surveyor at their own expense.

Mossy Oak Properties Selling Arkansas

8111 N St Louis St

Cave City, AR 72521

(870) 495-2123

<https://wesellarkansas.com/>

