

**Charming Cabin on the White River Fully Furnished
with Income Potential, Batesville, Arkansas**
8 Kate Drive
Batesville, AR 72501

\$298,500
1± Acres
Independence County



Charming Cabin on the White River Fully Furnished with Income Potential, Batesville, Arkansas

Batesville, AR / Independence County

SUMMARY

Address

8 Kate Drive

City, State Zip

Batesville, AR 72501

County

Independence County

Type

Recreational Land, Residential Property, Riverfront, Business Opportunity

Taxes (Annually)

590

Dwelling Square Feet

750

Bedrooms / Bathrooms

1 / 1

Acreage

1

Price

\$298,500

Property Website

<https://www.mossyoakproperties.com/property/charming-cabin-on-the-white-river-fully-furnished-with-income-potential-batesville-arkansas-independence-arkansas/62999/>



Charming Cabin on the White River Fully Furnished with Income Potential, Batesville, Arkansas Batesville, AR / Independence County

PROPERTY DESCRIPTION

A Charming Riverfront Cabin Retreat on the White River, Near Batesville, Arkansas

Escape to the serenity of the White River with this fully furnished, 750+ sq. ft. cabin, located just 15 minutes from Batesville, Arkansas. With over **100 feet of river frontage** and access to a **private community boat launch**, this property offers the perfect blend of modern amenities and breathtaking views.

Designed with relaxation and entertainment in mind, the cabin boasts a vaulted ceiling, **floor-to-ceiling windows**, and multiple double doors that open to an expansive **covered deck**. This seamless **indoor-outdoor living space** is perfect for gathering with friends, enjoying scenic sunsets, or unwinding to the **peaceful sounds of the river**. The fully equipped kitchen features white shaker cabinets, butcher block countertops, and stainless steel appliances, providing a stylish and functional space for meals.

The main floor offers a cozy bedroom, a beautifully tiled bathroom with a **walk-in shower**, and a convenient **laundry area**. A spiral staircase leads to a spacious loft with room for **multiple beds** and **stunning views of the river**, adding flexibility for guests or additional living space.

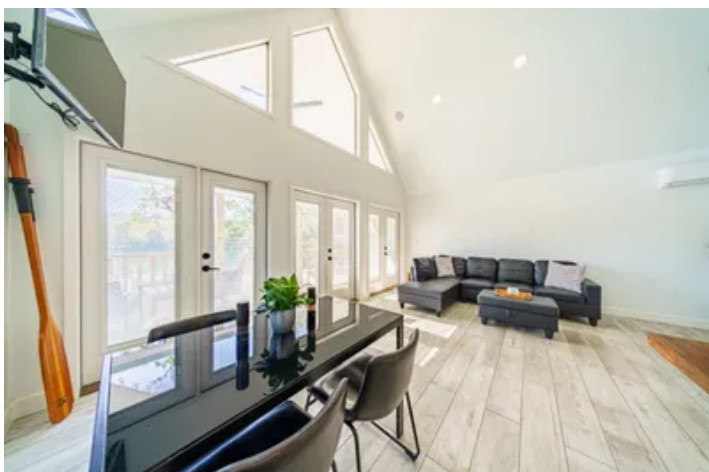
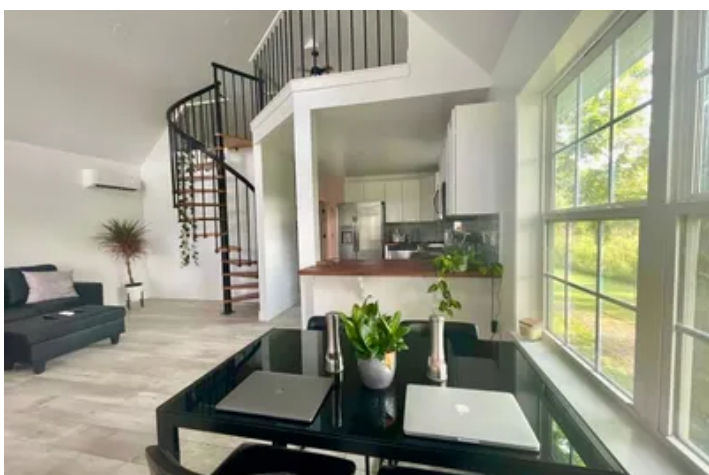
Outdoor features include over **500 sq. ft. of decks leading to the water**, a **solar-lit pathway**, and a **second riverside deck**, perfect for fishing, swimming, or simply soaking in the natural beauty. You can also use this to tie off kayaks or your boat. Modern conveniences like an **electric vehicle charging station**, **on-demand water heater**, and **built-in speaker system, both in and outside on deck** to enhance the property's appeal. The yard, equipped with games like horseshoes and tetherball, adds a fun touch for entertaining family and friends.

Whether you're seeking a **tranquil vacation home that you can also rent out when your not using it or a full-time residence**, this property offers the ultimate **retreat in the Ozarks**. Surrounded by nature, with easy access to Batesville and the renowned White River, this move-in-ready cabin is a rare opportunity to own your slice of riverfront paradise. These sellers built this home with so much thought! This is a must see!

Schedule Your Showing Today!

Proudly listed with Mossy Oak Properties Selling Arkansas, [870-495-2123](tel:870-495-2123). Contact **Pamela Welch**, your local land specialist, at [870-897-0700](tel:870-897-0700) or visit www.wesellarkansas.com for more details. Equal Housing Opportunity.

Charming Cabin on the White River Fully Furnished with Income Potential, Batesville, Arkansas
Batesville, AR / Independence County



Charming Cabin on the White River Fully Furnished with Income Potential, Batesville, Arkansas

Batesville, AR / Independence County

LISTING REPRESENTATIVE

For more information contact:



Representative

Pamela Welch

Mobile

(870) 897-0700

Office

(870) 495-2123

Email

pwelch@mossyoakproperties.com

Address

8111 N. St. Louis

City / State / Zip

Cave City, AR 72521

NOTES

[illegible]

[illegible]

DISCLAIMERS

Information in this brochure is provided solely for information purposes and does not constitute an offer to sell or advertise real estate outside the states in which broker or agent licensed. The information presented has been obtained from sources deemed to be reliable, but is not guaranteed or warranted by the agent, broker, or the sellers of these properties. This offering is subject to errors, omissions, prior sale, price change, correction or withdrawal from the market without notice. All references to age, square footage, income, expenses, acreage, carrying capacity, and land classification, etc. are approximate. Prospective buyers are chargeable with and expected to conduct their own independent investigation of the information and the property and to rely only on those results. Sellers reserve the right to accept or reject any and all offers without liability to any buyer or cooperating broker.

Maps are provided for illustration purposes only, the accuracy is not warranted. Parcels on interactive maps are not adjusted to match aerial backgrounds. This information is for reference purposes only and is not a legal document. Data maps contain errors. The seller and seller's agent are making known to all potential buyers that there may be variations between the location of the existing fence lines and the legal description of the deeded property. Seller and seller's agent make no warranties with regard to the location of the fence lines in relationship to the deeded property lines, nor does the Seller make any warranties or representations with regard to the specific acreage contained within the fenced property lines. Seller is selling the property in an "as is" condition, which includes the location of the fences as they exist. Boundaries shown on the accompanying maps are approximate, based on county parcel data. The maps are not to scale. The accuracy of the maps is not guaranteed. Prospective buyers are encouraged to verify fence lines, deeded property lines and acreages using a licensed surveyor at their own expense.

Mossy Oak Properties Selling Arkansas

8111 N St Louis St
Cave City, AR 72521
(870) 495-2123
wesellarkansas.com

