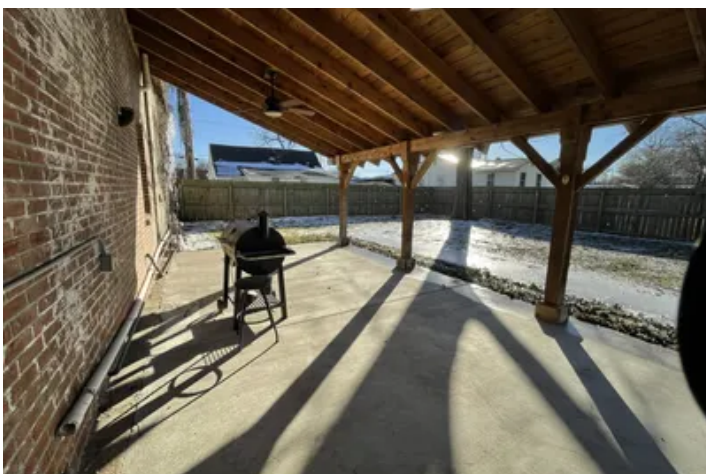


Historic Brick Lodge, 4400 +/- Sq ft under roof, Manila, Arkansas
313 N Baltimore
Manila, AR 72442

\$274,500
0.100± Acres
Mississippi County



Historic Brick Lodge, 4400 +/- Sq ft under roof, Manila, Arkansas
Manila, AR / Mississippi County

SUMMARY

Address

313 N Baltimore

City, State Zip

Manila, AR 72442

County

Mississippi County

Type

Residential Property, Commercial, Business Opportunity

Taxes (Annually)

1294

Dwelling Square Feet

4400

Acreage

0.100

Price

\$274,500

Property Website

<https://www.mossyoakproperties.com/property/historic-brick-lodge-4400-sq-ft-under-roof-manila-arkansas-mississippi-arkansas/36953/>



MORE INFO ONLINE:

MossyOakProperties.com

Historic Brick Lodge, 4400 +/- Sq ft under roof, Manila, Arkansas

Manila, AR / Mississippi County

PROPERTY DESCRIPTION

If it is historic, unique, turn-key, fully furnished, and stunning, which you have been looking for in Manila, Arkansas, look no further! This **Lodge is about 4400 sq ft** heated and cooled with about **2200 sq ft on top level**, and it has a **full kitchen, bathroom, 2 bedrooms, laundry room, and a large living room**. The upper level has access from the stairs inside or the stairs on the outside. This upper level features a large bathroom with a walk-in shower and a claw foot tub! The flooring on this level is gorgeous wood flooring! The laundry room is large, with tons of storage!

The **bottom level is about 2200 sq ft** and has a **roll-up door** where you can pull your boat or ATV, and they will be warm when you need them! Then, you have a **large open area for the living room, a storage closet, a bar area, a large kitchen, and a bathroom with a walk-in shower**. With all this being open, you would have to close in some of the large, open areas to make a bedroom if you needed one to be private. Off the kitchen area, you have a door leading outside to a covered back porch that is great for grilling and a private fenced backyard. This is great for the dogs! The outside is brick; it has city sewer and tankless gas water heater; the roof was redone in 2019, installed a new beam in 2024 and redone paint throughout, floors throughout, and so much more! This lodge is turn-key; all appliances and furniture will stay, so bring your clothes and some personal touches, and this place is walk-in ready! The owners have reinvented the Old Masonic Lodge into a one-of-a-kind showcase Lodge!

It is extremely hard sometimes to find a really good duck and deer hunting area that checks all the boxes. When you do, your job is not over because now you have the even harder thing to find: a location to call your home camp! Many factors come into play when finding a home camp. How close is it to where you hunt? How close is it to an airport? How well will it accommodate your guests? We are extremely proud to offer such a place! We have the place for you located in Manila, Arkansas, just 5 minutes from Big Lake WMA and 20 minutes from St. Francis Sunken Lands WMA. The lodge is about 1 hour from Memphis and 40 minutes from Jonesboro. This has more options than just a lodge! You could use this as a residence, VRBO, Business on the bottom level, living on the upper, and so much more!! If this interests you and you want a tour, call or text me anytime!

This is Proudly Listed with Mossy Oak Properties Selling Arkansas, [870-495-2123](tel:870-495-2123). **Listing Agent and your Local Land Specialist, Pamela Welch, [870-897-0700](tel:870-897-0700)**! Equal Housing Opportunity. www.ArkansasLandAndHomes.us



Historic Brick Lodge, 4400 +/- Sq ft under roof, Manila, Arkansas
Manila, AR / Mississippi County



Historic Brick Lodge, 4400 +/- Sq ft under roof, Manila, Arkansas
Manila, AR / Mississippi County

LISTING REPRESENTATIVE

For more information contact:



Representative

Pamela Welch

Mobile

(870) 897-0700

Office

(870) 495-2123

Email

pwelch@mossyoakproperties.com

Address

8111 N. St. Louis

City / State / Zip

Cave City, AR 72521

NOTES

This image shows a blank sheet of white paper with horizontal ruling lines. The lines are evenly spaced and run across the width of the page. There are no margins, text, or other markings on the paper.

MORE INFO ONLINE:

MossyOakProperties.com

This image shows a blank sheet of white paper with horizontal ruling lines. The lines are evenly spaced and extend across the width of the page. There are no margins, text, or other markings on the paper.



MORE INFO ONLINE:
MossyOakProperties.com

DISCLAIMERS

Information in this brochure is provided solely for information purposes and does not constitute an offer to sell or advertise real estate outside the states in which broker or agent licensed. The information presented has been obtained from sources deemed to be reliable, but is not guaranteed or warranted by the agent, broker, or the sellers of these properties. This offering is subject to errors, omissions, prior sale, price change, correction or withdrawal from the market without notice. All references to age, square footage, income, expenses, acreage, carrying capacity, and land classification, etc. are approximate. Prospective buyers are chargeable with and expected to conduct their own independent investigation of the information and the property and to rely only on those results. Sellers reserve the right to accept or reject any and all offers without liability to any buyer or cooperating broker.

Maps are provided for illustration purposes only, the accuracy is not warranted. Parcels on interactive maps are not adjusted to match aerial backgrounds. This information is for reference purposes only and is not a legal document. Data maps contain errors. The seller and seller's agent are making known to all potential buyers that there may be variations between the location of the existing fence lines and the legal description of the deeded property. Seller and seller's agent make no warranties with regard to the location of the fence lines in relationship to the deeded property lines, nor does the Seller make any warranties or representations with regard to the specific acreage contained within the fenced property lines. Seller is selling the property in an "as is" condition, which includes the location of the fences as they exist. Boundaries shown on the accompanying maps are approximate, based on county parcel data. The maps are not to scale. The accuracy of the maps is not guaranteed. Prospective buyers are encouraged to verify fence lines, deeded property lines and acreages using a licensed surveyor at their own expense.



Mossy Oak Properties Selling Arkansas

520 N Main
Cave City, AR 72521
(870) 495-2123
MossyOakProperties.com

