

**225+/- Acres, Cattle Farm, Highway
Frontage, Hay Barn, Shop, Cord, AR
0 Cord Rd
Cord, AR 72524**

\$649,900
225± Acres
Independence County





225+/- Acres, Cattle Farm, Highway Frontage, Hay Barn, Shop, Cord, AR Cord, AR / Independence County

SUMMARY

Address

0 Cord Rd

City, State Zip

Cord, AR 72524

County

Independence County

Type

Undeveloped Land, Farms, Ranches,
Hunting Land, Recreational Land

Latitude / Longitude

35.8363277 / -91.3333264

Taxes (Annually)

421

Acreage

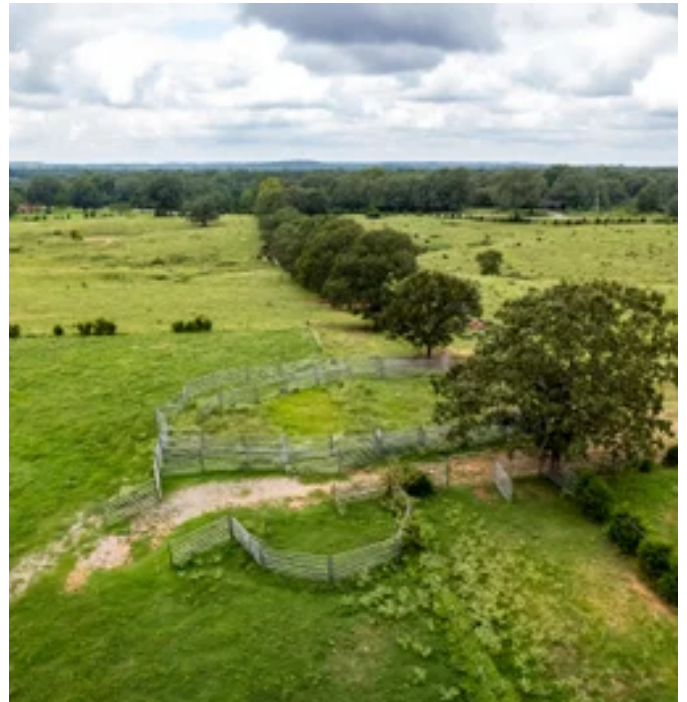
225

Price

\$649,900

Property Website

<https://www.mossyoakproperties.com/property/225-acres-cattle-farm-highway-frontage-hay-barn-shop-cord-ar-independence-arkansas/32087/>





**225+/- Acres, Cattle Farm, Highway Frontage, Hay Barn, Shop, Cord, AR
Cord, AR / Independence County**

PROPERTY DESCRIPTION

If you have been looking for a walk-in ready **cattle farm**, this is it! Fenced, cross fenced, large pastures, gorgeous hay fields, 5 nice ponds, a large hay barn along with a shop is all on this one piece of property! This property is located in an area that is between Saffell and Cord off the Cord Road in Independence County. This being on a paved road makes it great for big trucks that may be hauling hay or cattle. There are several places one could build a nice home overlooking all the days hard work that was put into this farm. This farm has had a lot of TLC in the years and it shows! If you're also a hunter, this property holds some of this areas largest white tail deer and tom turkey! If you are not a hunter you could lease the hunting for extra income. So, if you're looking to expand your horizons, maybe just getting started or a seasoned farmer, give us a call and let us get you on this property!

Listed with Mossy Oak Properties Strawberry River & Home [870-495-2123](tel:870-495-2123).
Listing agent Pamela Welch, [870-897-0700](tel:870-897-0700). Equal Housing Opportunity. Call
us today to set up a time to view this
property. www.ArkansasLandAndHomes.us



**225+/- Acres, Cattle Farm, Highway Frontage, Hay Barn, Shop, Cord, AR
Cord, AR / Independence County**





225+/- Acres, Cattle Farm, Highway Frontage, Hay Barn, Shop, Cord, AR
Cord, AR / Independence County

LISTING REPRESENTATIVE

For more information contact:



Representative

Pamela Welch

Mobile

(870) 897-0700

Office

(870) 495-2123

Email

pwelch@mossyoakproperties.com

Address

520 N Main

City / State / Zip

Cave City, AR 72521

NOTES



NOTES

[illegible]

DISCLAIMERS

Information in this brochure is provided solely for information purposes and does not constitute an offer to sell or advertise real estate outside the states in which broker or agent licensed. The information presented has been obtained from sources deemed to be reliable, but is not guaranteed or warranted by the agent, broker, or the sellers of these properties. This offering is subject to errors, omissions, prior sale, price change, correction or withdrawal from the market without notice. All references to age, square footage, income, expenses, acreage, carrying capacity, and land classification, etc. are approximate. Prospective buyers are chargeable with and expected to conduct their own independent investigation of the information and the property and to rely only on those results. Sellers reserve the right to accept or reject any and all offers without liability to any buyer or cooperating broker.

Maps are provided for illustration purposes only, the accuracy is not warranted. Parcels on interactive maps are not adjusted to match aerial backgrounds. This information is for reference purposes only and is not a legal document. Data maps contain errors. The seller and seller's agent are making known to all potential buyers that there may be variations between the location of the existing fence lines and the legal description of the deeded property. Seller and seller's agent make no warranties with regard to the location of the fence lines in relationship to the deeded property lines, nor does the Seller make any warranties or representations with regard to the specific acreage contained within the fenced property lines. Seller is selling the property in an "as is" condition, which includes the location of the fences as they exist. Boundaries shown on the accompanying maps are approximate, based on county parcel data. The maps are not to scale. The accuracy of the maps is not guaranteed. Prospective buyers are encouraged to verify fence lines, deeded property lines and acreages using a licensed surveyor at their own expense.



Mossy Oak Properties Strawberry River Land and Homes
520 N Main
Cave City, AR 72521
(870) 495-2123
MossyOakProperties.com

