

**77 +/- Acres with Year-Round Creek Between Cave City
& Batesville, Arkansas**
2794 & 2830 Antioch Rd
Cave City, AR 72521

\$349,500
77± Acres
Independence County



77 +/- Acres with Year-Round Creek Between Cave City & Batesville, Arkansas
Cave City, AR / Independence County

SUMMARY

Address

2794 & 2830 Antioch Rd

City, State Zip

Cave City, AR 72521

County

Independence County

Type

Hunting Land, Recreational Land, Farms

Latitude / Longitude

35.864291 / -91.453801

Acreage

77

Price

\$349,500

Property Website

<https://www.mossoakproperties.com/property/77-acres-with-year-round-creek-between-cave-city-batesville-arkansas/independence/arkansas/100111/>



77 +/- Acres with Year-Round Creek Between Cave City & Batesville, Arkansas Cave City, AR / Independence County

PROPERTY DESCRIPTION

77 +/- Acres with Year-Round Creek Between Cave City & Batesville - Incredible Hunting, Pasture & Homesites

Escape to this **beautiful 77 +/- acre property located at 2794 & 2830 Antioch Road in Cave City, Arkansas**, offering the perfect blend of recreation, pasture, and potential homesites in a highly desirable location in **Independence County**. This has 2, 911 addresses.

Conveniently located **just a few miles off Highway 167 and perfectly positioned between Cave City and Batesville**, this property offers easy access while still providing the peace, privacy, and beauty of the Arkansas countryside.

One of the standout features of the property is **Dota Creek**, a **year-round creek** that winds through the land, providing a reliable water source and enhancing both the beauty and wildlife habitat of the property.

The land itself offers a **great mixture of excellent pasture and hay fields along with natural areas that attract abundant wildlife**. This property is loaded with **Whitetail Deer, Turkey, and small game**, making it an excellent hunting or recreational tract.

The **terrain provides several beautiful locations to build**, offering potential homesites with scenic views of the surrounding countryside. Whether you're looking to build a **country home, cabin, farm, or recreational retreat**, this property offers endless possibilities.

With **ATV trails, hiking, hunting opportunities, and open pasture for livestock or hay production**, this property truly has something for everyone.

Properties in this **prime location between Cave City and Batesville rarely come available**, making this a unique opportunity to own a large tract in a highly sought-after area.

For more information or to schedule a private showing, contact:

Pamela Welch
Principal Broker
Mossy Oak Properties Selling Arkansas
Cell: [870-897-0700](tel:870-897-0700) or contact the office at [870-495-2123](tel:870-495-2123)

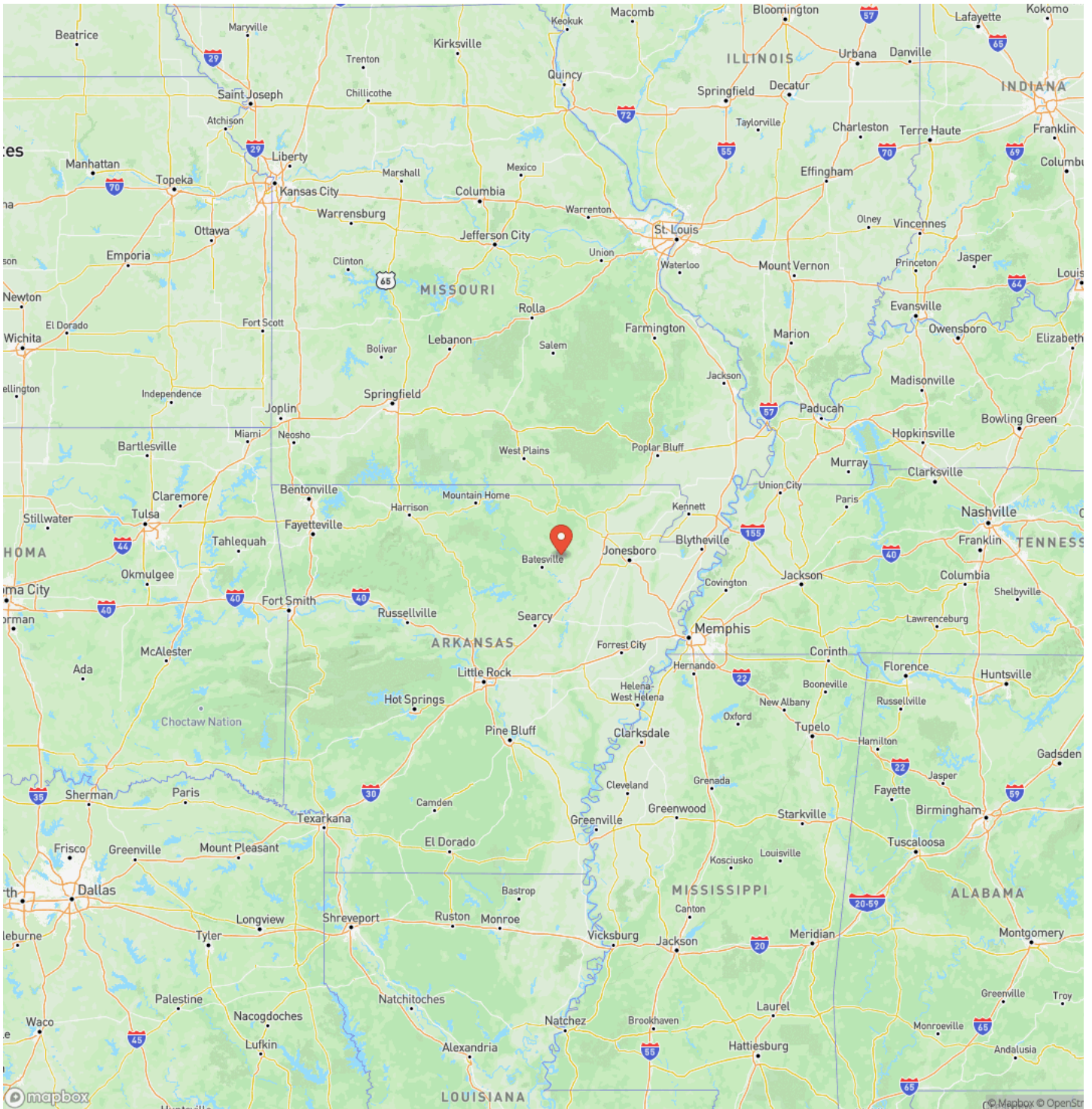
Equal Housing Opportunity. www.WeSellArkansas.com.

77 +/- Acres with Year-Round Creek Between Cave City & Batesville, Arkansas
Cave City, AR / Independence County



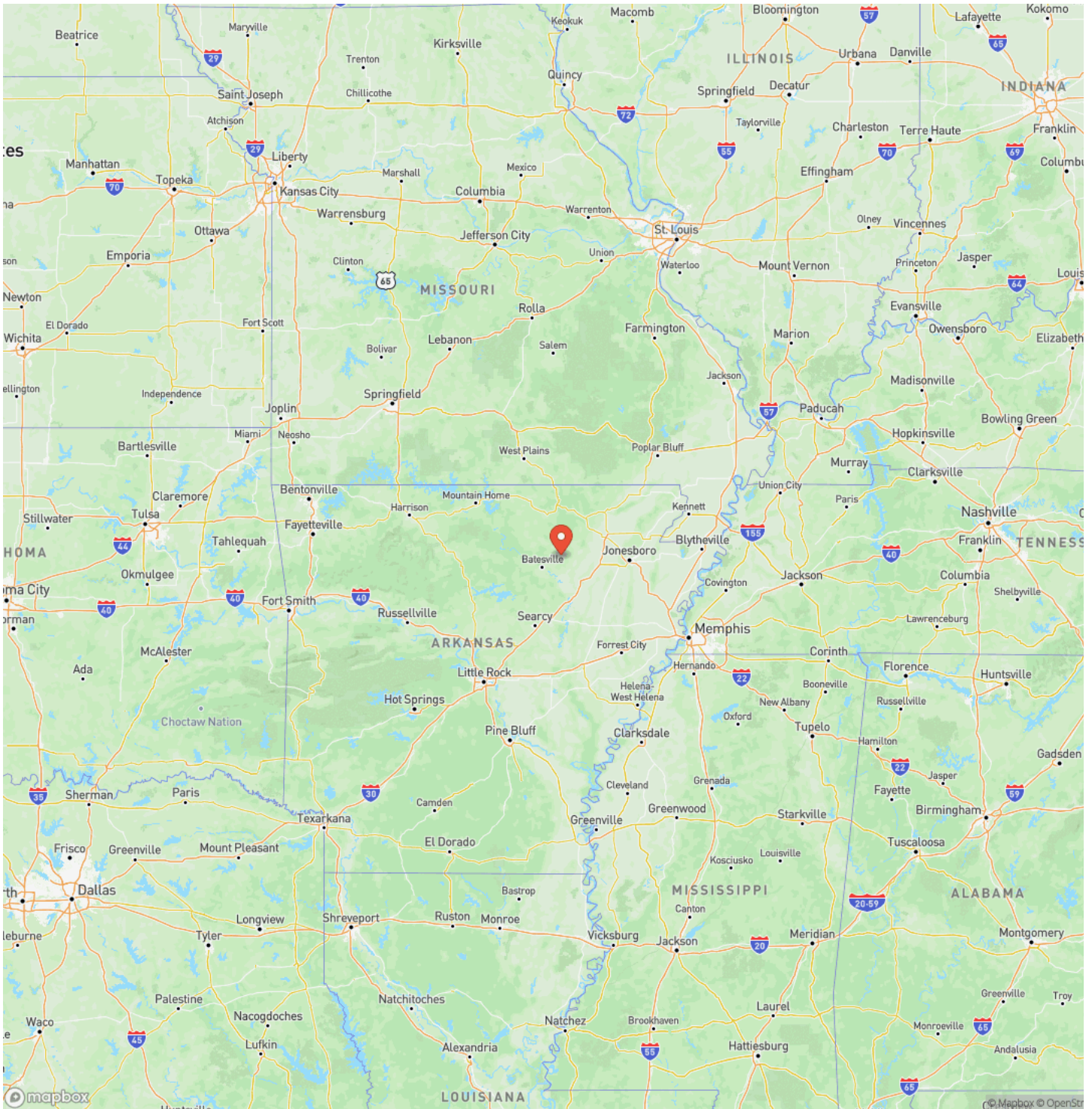
77 +/- Acres with Year-Round Creek Between Cave City & Batesville, Arkansas
Cave City, AR / Independence County

Locator Map

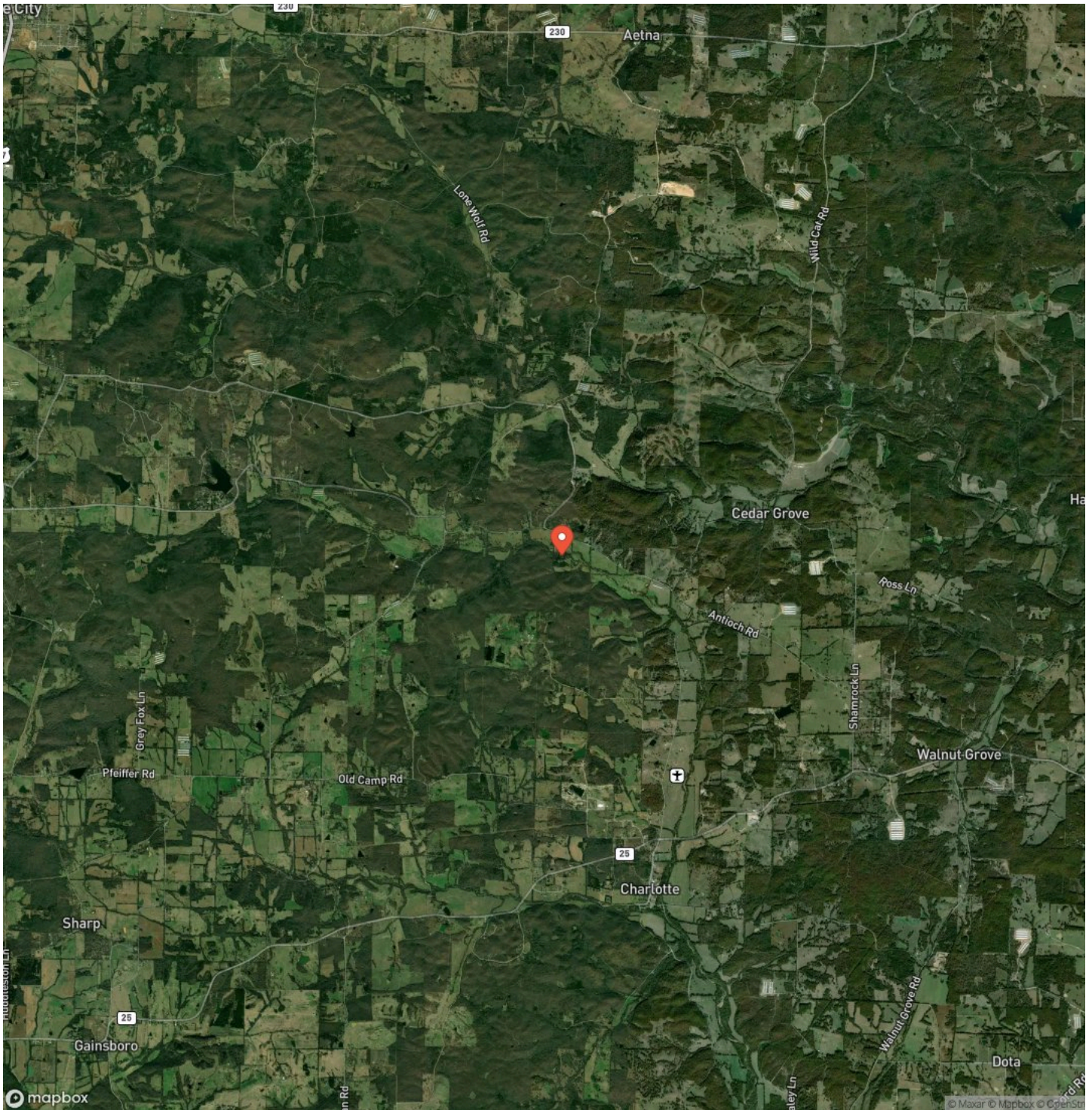


**77 +/- Acres with Year-Round Creek Between Cave City & Batesville, Arkansas
Cave City, AR / Independence County**

Locator Map



Satellite Map



DISCLAIMERS

Information in this brochure is provided solely for information purposes and does not constitute an offer to sell or advertise real estate outside the states in which broker or agent licensed. The information presented has been obtained from sources deemed to be reliable, but is not guaranteed or warranted by the agent, broker, or the sellers of these properties. This offering is subject to errors, omissions, prior sale, price change, correction or withdrawal from the market without notice. All references to age, square footage, income, expenses, acreage, carrying capacity, and land classification, etc. are approximate. Prospective buyers are chargeable with and expected to conduct their own independent investigation of the information and the property and to rely only on those results. Sellers reserve the right to accept or reject any and all offers without liability to any buyer or cooperating broker.

Maps are provided for illustration purposes only, the accuracy is not warranted. Parcels on interactive maps are not adjusted to match aerial backgrounds. This information is for reference purposes only and is not a legal document. Data maps contain errors. The seller and seller's agent are making known to all potential buyers that there may be variations between the location of the existing fence lines and the legal description of the deeded property. Seller and seller's agent make no warranties with regard to the location of the fence lines in relationship to the deeded property lines, nor does the Seller make any warranties or representations with regard to the specific acreage contained within the fenced property lines. Seller is selling the property in an "as is" condition, which includes the location of the fences as they exist. Boundaries shown on the accompanying maps are approximate, based on county parcel data. The maps are not to scale. The accuracy of the maps is not guaranteed. Prospective buyers are encouraged to verify fence lines, deeded property lines and acreages using a licensed surveyor at their own expense.

Mossy Oak Properties Selling Arkansas

8111 N St Louis St

Cave City, AR 72521

(870) 495-2123

<https://wesellarkansas.com/>

