

16 +/- Acres, Highway frontage, Power at road,
driveway, Hunting Property, Poughkeepsie, Arkansas
Highway 56
Poughkeepsie, AR 72569

\$59,900
16± Acres
Sharp County



**16 +/- Acres, Highway frontage, Power at road, driveway, Hunting Property, Poughkeepsie, Arkansas
Poughkeepsie, AR / Sharp County**

SUMMARY

Address

Highway 56

City, State Zip

Poughkeepsie, AR 72569

County

Sharp County

Type

Hunting Land, Recreational Land

Latitude / Longitude

36.084565 / -91.477512

Acreage

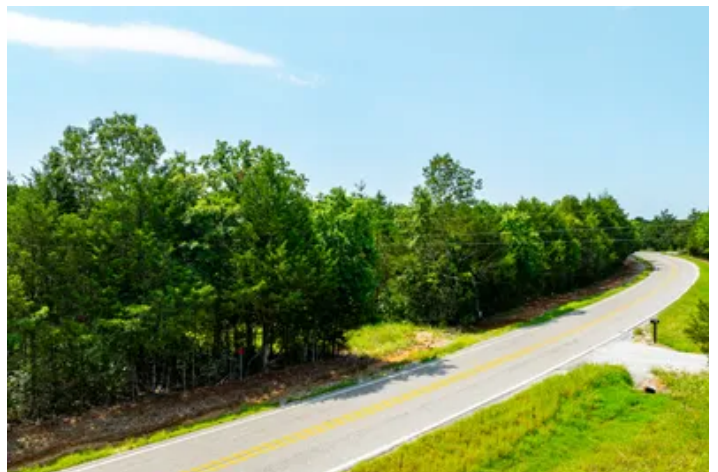
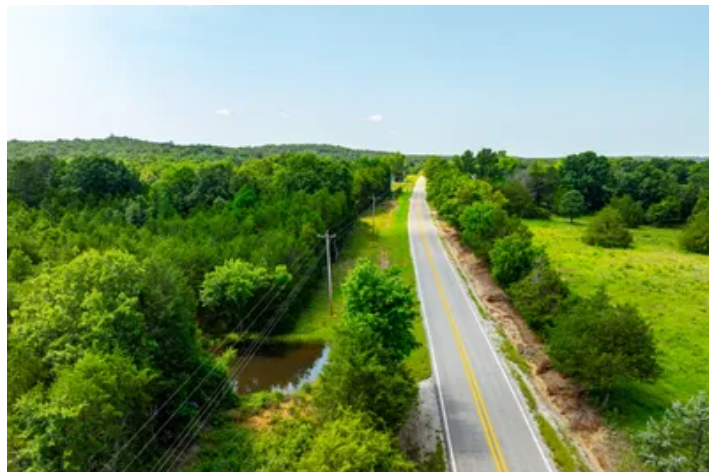
16

Price

\$59,900

Property Website

<https://www.mossyoakproperties.com/property/16-acres-highway-frontage-power-at-road-driveway-hunting-property-poughkeepsie-arkansas/sharp/arkansas/102023/>



16 +/- Acres, Highway frontage, Power at road, driveway, Hunting Property, Poughkeepsie, Arkansas Poughkeepsie, AR / Sharp County

PROPERTY DESCRIPTION

Affordable Hunting Land Near the Strawberry River | Poughkeepsie, AR, NO RESTRICTIONS

If you've been searching for an **affordable piece of ground in Sharp County**, this property near the **Strawberry River in Poughkeepsie, Arkansas** is one you don't want to miss.

Offering a great combination of **price, location, and versatility**, this tract is perfect for those looking to own land without stretching the budget. Whether you're wanting a **hunting spot, weekend getaway, or future homesite**, this property gives you the opportunity to make it your own.

The land features a mix of **wooded areas and a pond**, creating a great setup for **wildlife, including whitetail deer and small game**, while also providing a peaceful setting to relax and enjoy the outdoors.

With flexible use options, you can:

Build a home

Set up a camper or RV

Place a mobile home

Create a hunting cabin

Located just minutes from the **Strawberry River**, you'll also enjoy easy access to **fishing, floating, and outdoor recreation**.

Affordable tracts like this—especially in a location like this—**don't come available often**.

Conclusion

This versatile property near the Strawberry River is perfect for hunters and outdoor enthusiasts looking to create their ideal retreat. With utilities available close and various land use options, this property is ready to meet your needs. Contact Pamela Welch for more details and to schedule a visit.

Proudly listed with **Mossy Oak Properties Selling Arkansas**, [870-495-2123](tel:870-495-2123).

Call or text Listing Agent, Pamela Welch at [870-897-0700](tel:870-897-0700) for a tour or more information.

Equal Housing Opportunity. www.WeSellArkansas.com.

At **Mossy Oak Properties Selling Arkansas**, you are always welcome. Whether you stop by our office or schedule a private appointment, you'll be greeted by a friendly, knowledgeable team ready to assist you. If you prefer a quieter, more private setting, we are happy to meet with you at our conference table and connect you with trusted lenders who can help—whether you're purchasing a home, farm, recreational land, or beginning your investment journey.

No matter the season, we make viewing property comfortable. During the colder months, our **fully enclosed six-seater ATV** keeps you warm and protected from the elements. In the hotter months, it provides a **cool, shaded ride**, allowing you to tour property comfortably without battling the heat. Weather should never stand in the way of finding the right property.

With **flexible hours** to fit your schedule, we're here when you need us. Call to set up an appointment or stop by our office at **8111 North St. Louis Street, Cave City, Arkansas**, and let us work for you.

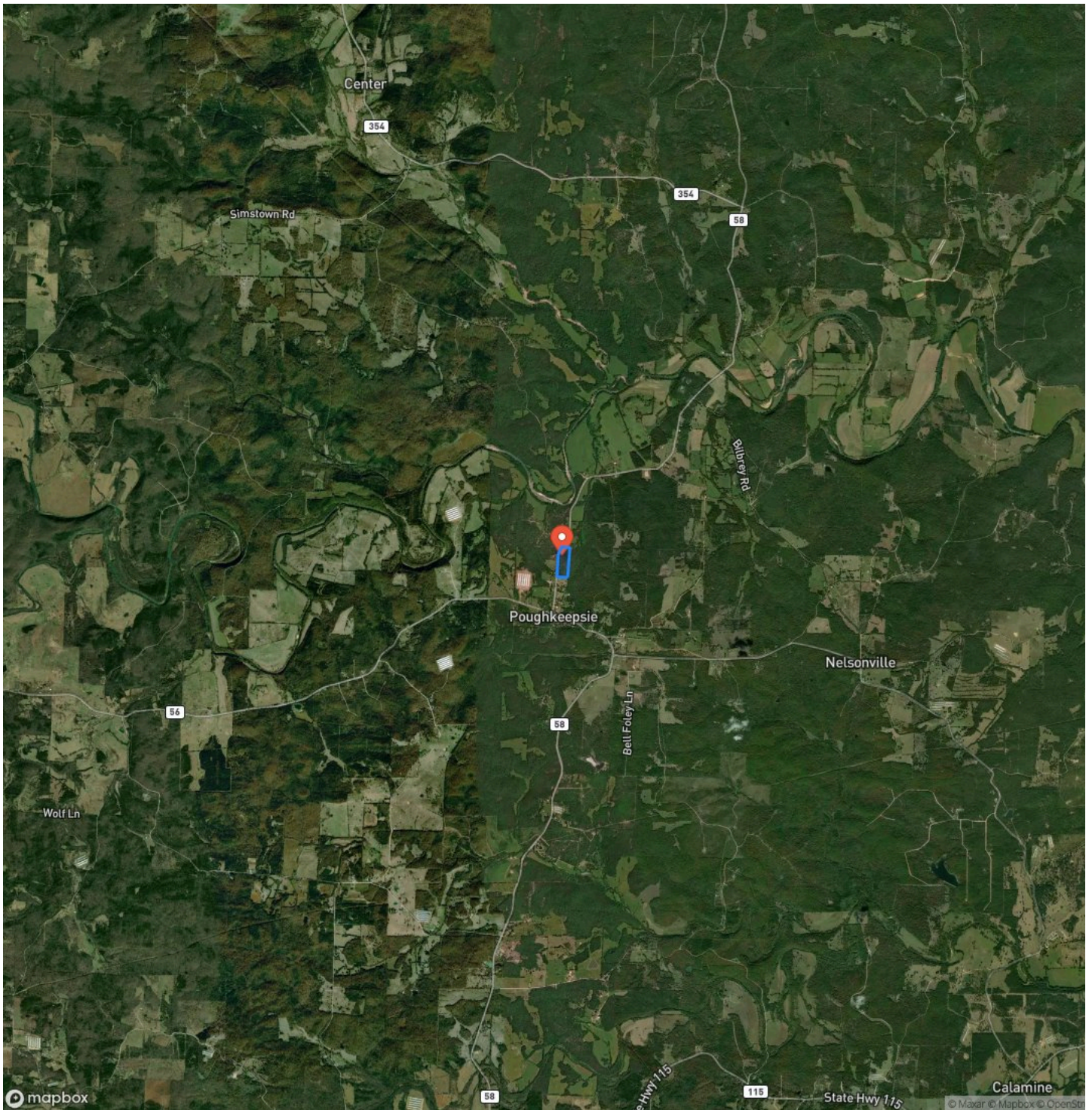


16 +/- Acres, Highway frontage, Power at road, driveway, Hunting Property, Poughkeepsie, Arkansas
Poughkeepsie, AR / Sharp County



16 +/- Acres, Highway frontage, Power at road, driveway, Hunting Property, Poughkeepsie, Arkansas
Poughkeepsie, AR / Sharp County

Satellite Map



DISCLAIMERS

Information in this brochure is provided solely for information purposes and does not constitute an offer to sell or advertise real estate outside the states in which broker or agent licensed. The information presented has been obtained from sources deemed to be reliable, but is not guaranteed or warranted by the agent, broker, or the sellers of these properties. This offering is subject to errors, omissions, prior sale, price change, correction or withdrawal from the market without notice. All references to age, square footage, income, expenses, acreage, carrying capacity, and land classification, etc. are approximate. Prospective buyers are chargeable with and expected to conduct their own independent investigation of the information and the property and to rely only on those results. Sellers reserve the right to accept or reject any and all offers without liability to any buyer or cooperating broker.

Maps are provided for illustration purposes only, the accuracy is not warranted. Parcels on interactive maps are not adjusted to match aerial backgrounds. This information is for reference purposes only and is not a legal document. Data maps contain errors. The seller and seller's agent are making known to all potential buyers that there may be variations between the location of the existing fence lines and the legal description of the deeded property. Seller and seller's agent make no warranties with regard to the location of the fence lines in relationship to the deeded property lines, nor does the Seller make any warranties or representations with regard to the specific acreage contained within the fenced property lines. Seller is selling the property in an "as is" condition, which includes the location of the fences as they exist. Boundaries shown on the accompanying maps are approximate, based on county parcel data. The maps are not to scale. The accuracy of the maps is not guaranteed. Prospective buyers are encouraged to verify fence lines, deeded property lines and acreages using a licensed surveyor at their own expense.

Mossy Oak Properties Selling Arkansas

8111 N St Louis St
Cave City, AR 72521
(870) 495-2123
wesellarkansas.com

