

OF: 4401 Highway 351 Jonesboro, Arkansas

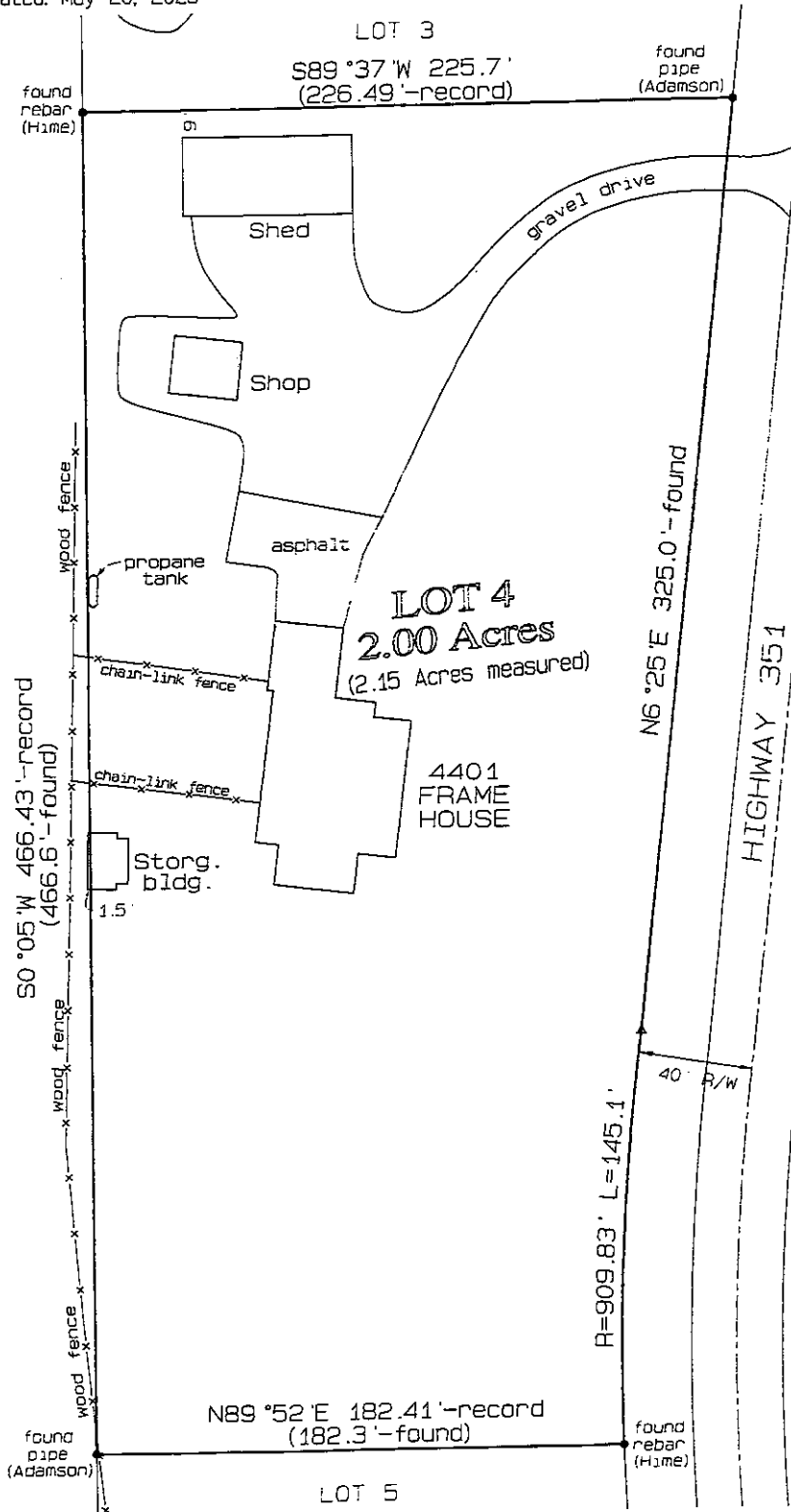
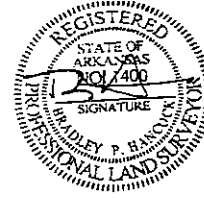
A survey of the following described lands in Craighead County, Arkansas, to-wit:

Lot 4 of Brewer Estates Subdivision of a part of the Northeast Quarter of Section 22, Township 15 North, Range 4 East, as shown by Plat in Plat Cabinet "C" Page 6 at Jonesboro, Arkansas, subject to Bill of Assurance recorded in Deed Record 530 Page 279 and to easements as shown on recorded Plat. Subject to assessments, building lines, easements, mineral reservations and/or conveyances, restrictions, and any other matters of record or fact.

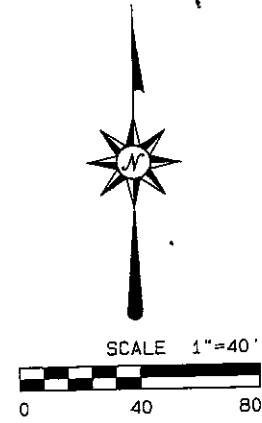
Notes:

- 1.) Improvements are as shown.
- 2.) Bearings and distances based on Arkansas State Plane Coordinates, North Zone Grid (0301), North American Datum 1983.

Dated: May 20, 2025



pu



Bradley P. Hancock
 Surveying & Mapping
 P.O. Box 1522
 Paragould, Arkansas