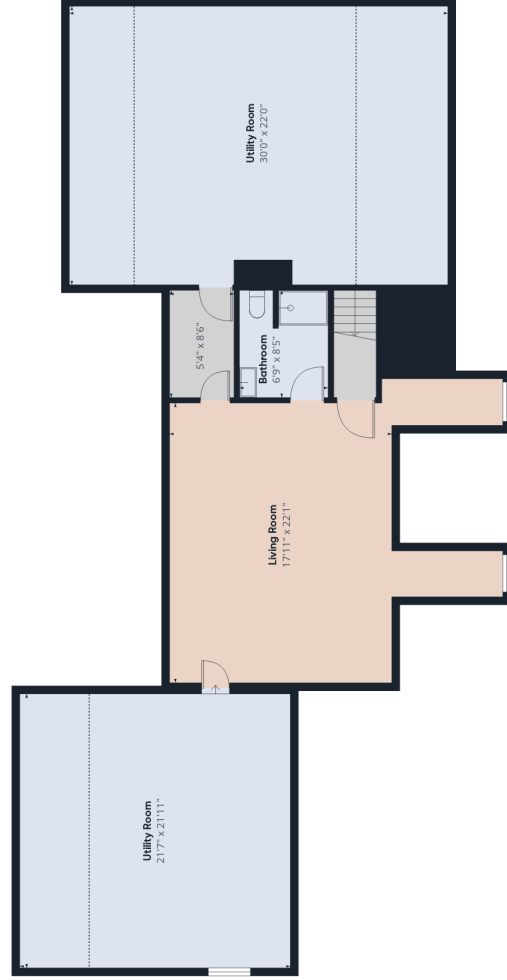




Floor 0



Floor 1



Approximate total area⁽¹⁾

4509 ft²

Reduced headroom

397 ft²

(1) Excluding balconies and terraces

Reduced headroom

..... Below 5 ft

Calculations reference the RICS IPMS 3C standard. Measurements are approximate and not to scale. This floor plan is intended for illustration only.

GIRAFFE360