

**18+/- Acres with bonus farmhouse,
Batesville
1155 Skyview
Batesville, AR 72501**

\$104,900
18± Acres
Independence County



**18+/- Acres with bonus farmhouse, Batesville
Batesville, AR / Independence County**

SUMMARY

Address

1155 Skyview

City, State Zip

Batesville, AR 72501

County

Independence County

Type

Residential Property, Hunting Land, Single Family

Latitude / Longitude

35.912906 / -91.64392

Taxes (Annually)

303

Dwelling Square Feet

1400

Bedrooms / Bathrooms

4 / 1

Acreage

18

Price

\$104,900

Property Website

<https://www.mossyoakproperties.com/property/18-acres-with-bonus-farmhouse-batesville-independence-arkansas/34703/>



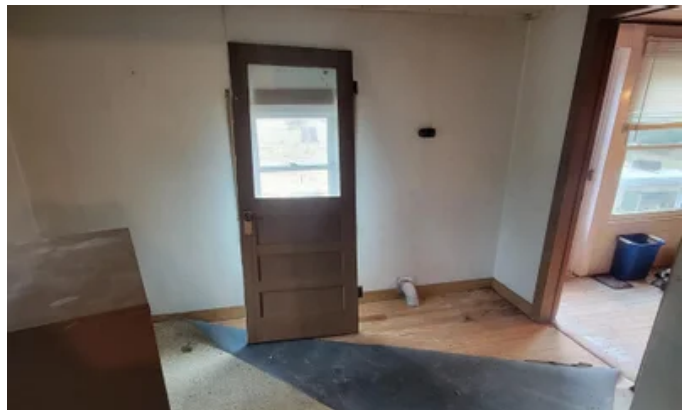
**18+/- Acres with bonus farmhouse, Batesville
Batesville, AR / Independence County**

PROPERTY DESCRIPTION

You can own a piece of history with this over 100 Year old farm home on a gorgeous 18+/- Acres! Home will be sold AS IS but has appx 8 year old metal roof and windows. This spacious home has 3 or 4 bedrooms, 2 living areas or 1 living and 1 den, kitchen, laundry room and a utility room! The land has around 4 Acres of pasture, 1+/- Acre homesite and remaining 14+/- Acres of timber! Wonderful investment opportunity here! Also on the property you will find appx 10'x12 and 8'x8' outbuildings and an appx 14' x 40' pole barn. With rural water service, Entergy electric, septic, fiber internet and trash pickup service already on site this place could be great for a multi family and a small or hobby farm. The propane tank on site is owned as well. Priced very reasonable at ONLY \$104,900 this will not last long! Listed with Mossy Oak Properties, Strawberry River Land & Homes. www.arkansaslandandhomes.us. Call/text Carrie Trego @ [870-897-7969](tel:870-897-7969) for your showing! Equal Housing Opportunity.



**18+/- Acres with bonus farmhouse, Batesville
Batesville, AR / Independence County**



18+/- Acres with bonus farmhouse, Batesville
Batesville, AR / Independence County

Locator Maps



18+/- Acres with bonus farmhouse, Batesville
Batesville, AR / Independence County

Aerial Maps



**18+/- Acres with bonus farmhouse, Batesville
Batesville, AR / Independence County**

LISTING REPRESENTATIVE

For more information contact:



Representative

Carrie Trego

Mobile

(870) 897-7969

Email

ctrego@mossyoakproperties.com

Address

520 N Main

City / State / Zip

Cave City, AR 72521

NOTES

MORE INFO ONLINE:

MossyOakProperties.com

NOTES

[illegible]

DISCLAIMERS

Information in this brochure is provided solely for information purposes and does not constitute an offer to sell or advertise real estate outside the states in which broker or agent licensed. The information presented has been obtained from sources deemed to be reliable, but is not guaranteed or warranted by the agent, broker, or the sellers of these properties. This offering is subject to errors, omissions, prior sale, price change, correction or withdrawal from the market without notice. All references to age, square footage, income, expenses, acreage, carrying capacity, and land classification, etc. are approximate. Prospective buyers are chargeable with and expected to conduct their own independent investigation of the information and the property and to rely only on those results. Sellers reserve the right to accept or reject any and all offers without liability to any buyer or cooperating broker.

Maps are provided for illustration purposes only, the accuracy is not warranted. Parcels on interactive maps are not adjusted to match aerial backgrounds. This information is for reference purposes only and is not a legal document. Data maps contain errors. The seller and seller's agent are making known to all potential buyers that there may be variations between the location of the existing fence lines and the legal description of the deeded property. Seller and seller's agent make no warranties with regard to the location of the fence lines in relationship to the deeded property lines, nor does the Seller make any warranties or representations with regard to the specific acreage contained within the fenced property lines. Seller is selling the property in an "as is" condition, which includes the location of the fences as they exist. Boundaries shown on the accompanying maps are approximate, based on county parcel data. The maps are not to scale. The accuracy of the maps is not guaranteed. Prospective buyers are encouraged to verify fence lines, deeded property lines and acreages using a licensed surveyor at their own expense.



Mossy Oak Properties Strawberry River Land and Homes

520 N Main

Cave City, AR 72521

(870) 495-2123

MossyOakProperties.com

