

**Mountaintop 14.5+/- Mountain View Arkansas with water
and electric!**
1020 Anderson
Mountain View, AR 72560

\$129,900
14.500± Acres
Stone County



Mountaintop 14.5+/- Mountain View Arkansas with water and electric!
Mountain View, AR / Stone County

SUMMARY

Address

1020 Anderson

City, State Zip

Mountain View, AR 72560

County

Stone County

Type

Recreational Land, Residential Property, Hunting Land

Latitude / Longitude

35.839655 / -92.065799

Taxes (Annually)

15

Acreage

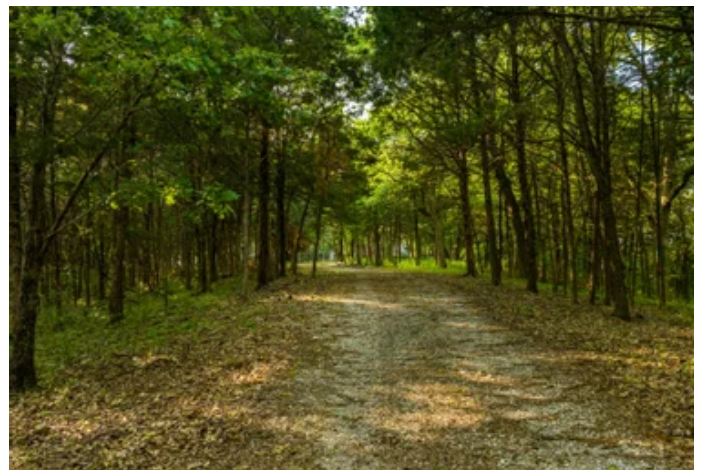
14.500

Price

\$129,900

Property Website

<https://www.mossyoakproperties.com/property/mountaintop-14-5-mountain-view-arkansas-with-water-and-electric-stone-arkansas/40316/>



Mountaintop 14.5+/- Mountain View Arkansas with water and electric! Mountain View, AR / Stone County

PROPERTY DESCRIPTION

Welcome to the market this gorgeous mountaintop 14.5+/- Acres in Mountain View, Arkansas! Rarely do you find an unrestricted property this far up with such a gorgeous panoramic mountain view and also water service and electric to the property! The water service and electric to the cleared area used for a camper site is already in place and ready for use. A perk test exemption is on file with the Health Department. If you are looking for a gorgeous property that is already ready to build or use for your seasonal recreation, it does not get any better than this once! Also featured on the property is a 20' x 28' pole barn and a custom outhouse style water system area! Don't miss out on this one!

Mountain View, Arkansas is home to the Ozark Folk Center State Park, the Jimmy Driftwood Barn and is named the "Folk Music Capital of the World". The town, located deep in the Ozarks is surrounded by mountains and rivers, offering outdoor activities that include caving at Blanchard Springs Caverns and fly fishing on the White River. The 50-mile Syllamo Mountain Bike Trail is also nearby. There is too much to list and so much more to see in this gorgeous historic town! DON'T WAIT!! Priced to sell at only \$129,900, you do not want to miss this one! Proudly Listed with Mossy Oak Properties, Strawberry River Land & Homes. Call/text Listing Realtor **Carrie Trego** at [870-897-7969](tel:870-897-7969). www.ArkansasLandAndHomes.us. Equal Housing Opportunity.



Mountaintop 14.5+/- Mountain View Arkansas with water and electric!
Mountain View, AR / Stone County



**Mountaintop 14.5+/- Mountain View Arkansas with water and electric!
Mountain View, AR / Stone County**

LISTING REPRESENTATIVE

For more information contact:



Representative

Carrie Trego

Mobile

(870) 897-7969

Email

ctrego@mossyoakproperties.com

Address

520 N Main

City / State / Zip

Cave City, AR 72521

NOTES

[illegible]

MORE INFO ONLINE:

MossyOakProperties.com

This image shows a blank sheet of white paper with horizontal ruling lines. The lines are evenly spaced and extend across the width of the page. There are no margins, text, or other markings on the paper.



DISCLAIMERS

Information in this brochure is provided solely for information purposes and does not constitute an offer to sell or advertise real estate outside the states in which broker or agent licensed. The information presented has been obtained from sources deemed to be reliable, is not guaranteed or warranted by the agent, broker, or the sellers of these properties. This offering is subject to errors, omissions, prior sale, price change, correction or withdrawal from the market without notice. All references to age, square footage, income, expenses, acreage, carrying capacity, and land classification, etc. are approximate. Prospective buyers are chargeable with and expected to conduct their own independent investigation of the information and the property and to rely only on those results. Sellers reserve the right to accept or reject any and all offers without liability to any buyer or cooperating broker.

Maps are provided for illustration purposes only, the accuracy is not warranted. Parcels on interactive maps are not adjusted to match aerial backgrounds. This information is for reference purposes only and is not a legal document. Data maps contain errors. The seller and seller's agent are making known to all potential buyers that there may be variations between the location of the existing fence lines and the legal description of the deeded property. Seller and seller's agent make no warranties with regard to the location of the fence lines in relation to the deeded property lines, nor does the Seller make any warranties or representations with regard to the specific acreage contained within the fenced property lines. Seller is selling the property in an "as is" condition, which includes the location of the fences as they exist. Boundaries shown on the accompanying maps are approximate, based on county parcel data. The maps are not to scale. The accuracy of the maps is not guaranteed. Prospective buyers are encouraged to verify fence lines, deeded property lines and acreages using a licensed surveyor at their own expense.



Mossy Oak Properties Strawberry River Land and Homes

520 N Main
Cave City, AR 72521
(870) 495-2123
MossyOakProperties.com

