

**3,520 Sq Ft Commercial Building On 2.4 Acres In The
Heart Of Columbia, TN**
412 Lynda Lee Ln
Columbia, TN 38401

\$1,100,000
2,400± Acres
Maury County



3,520 Sq Ft Commercial Building On 2.4 Acres In The Heart Of Columbia, TN Columbia, TN / Maury County

SUMMARY

Address

412 Lynda Lee Ln

City, State Zip

Columbia, TN 38401

County

Maury County

Type

Commercial

Latitude / Longitude

35.584323 / -87.04365

Dwelling Square Feet

3520

Bedrooms / Bathrooms

-- / 1.5

Acreage

2.400

Price

\$1,100,000

Property Website

<https://www.mossyoakproperties.com/property/3-520-sq-ft-commercial-building-on-2-4-acres-in-the-heart-of-columbia-tn-maury-tennessee/35286/>



3,520 Sq Ft Commercial Building On 2.4 Acres In The Heart Of Columbia, TN Columbia, TN / Maury County

PROPERTY DESCRIPTION

Unlimited uses for this 3,520 sq ft building on 2.4 acres in the heart of Columbia! Two contiguous parcels to include tax id 113L A 005.00 and tax id [113 059.11](#). Finished office and conference space with heated warehouse, city water and sewer, 1 full bath and 1 half bath. Separate city water and sewer taps already in place on the adjoining parcel so lots of room for expansion. Business is moving to a larger location and not for sale, only the land and building. Seller will require a 3 to 6 month lease back option at market rates while they move in to their new building. 5 min south of the Columbia square, and 15 min from I65 makes this an ideal location!

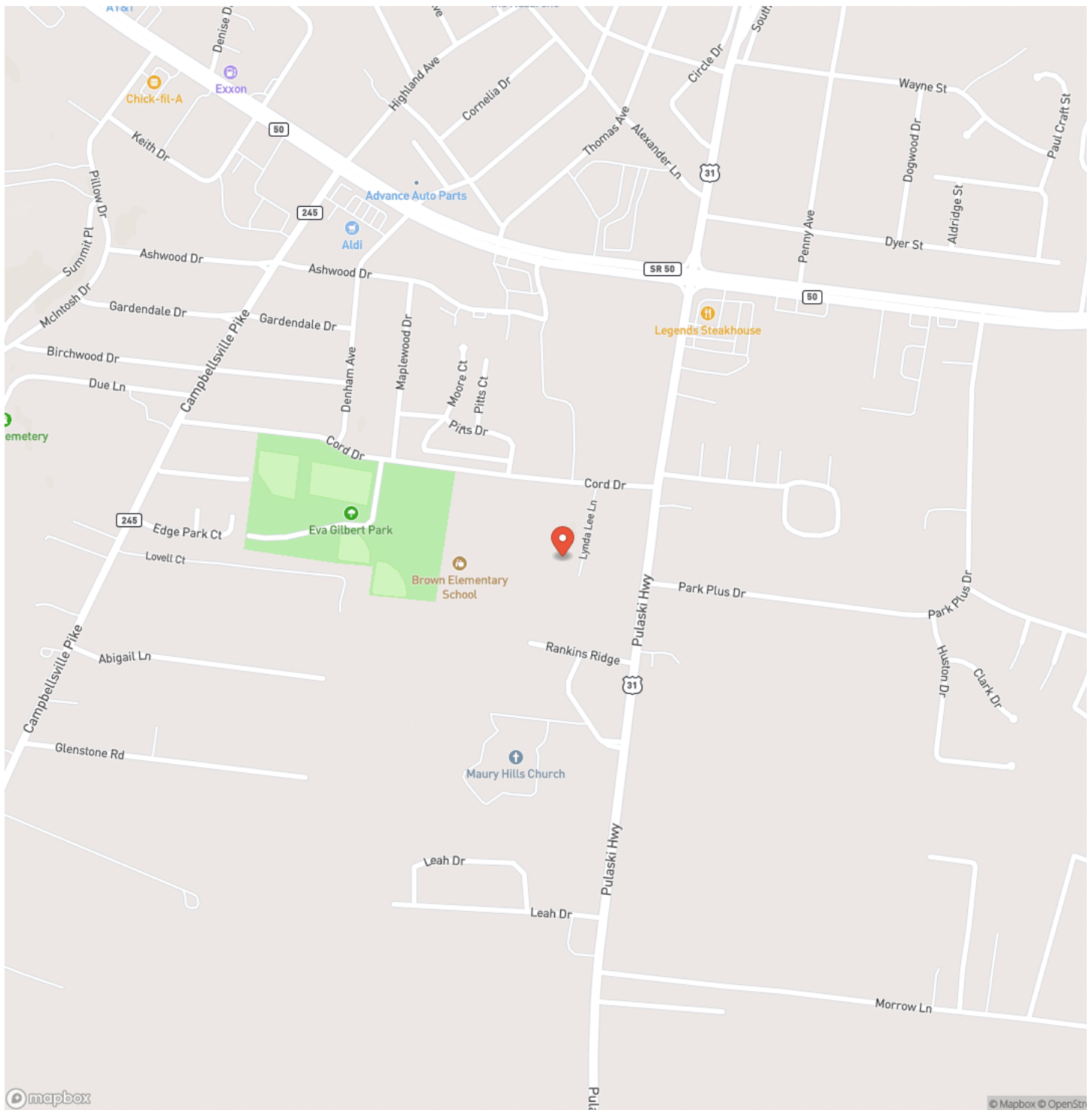
Contact Jeremy Hall for details - [931-797-4868](tel:931-797-4868) or at jhall@mossyoakproperties.com



3,520 Sq Ft Commercial Building On 2.4 Acres In The Heart Of Columbia, TN
Columbia, TN / Maury County

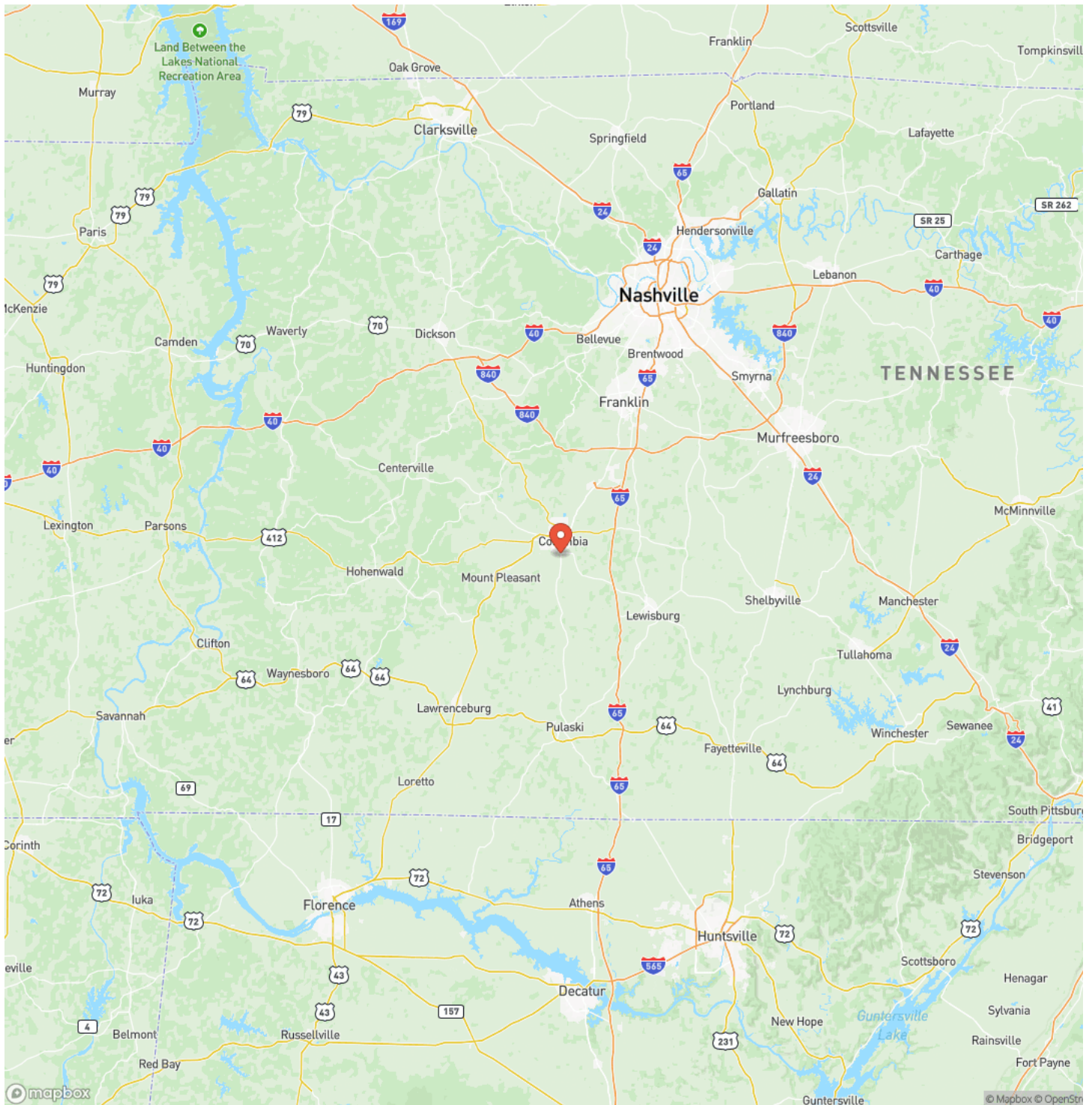


Locator Map



3,520 Sq Ft Commercial Building On 2.4 Acres In The Heart Of Columbia, TN
Columbia, TN / Maury County

Locator Map

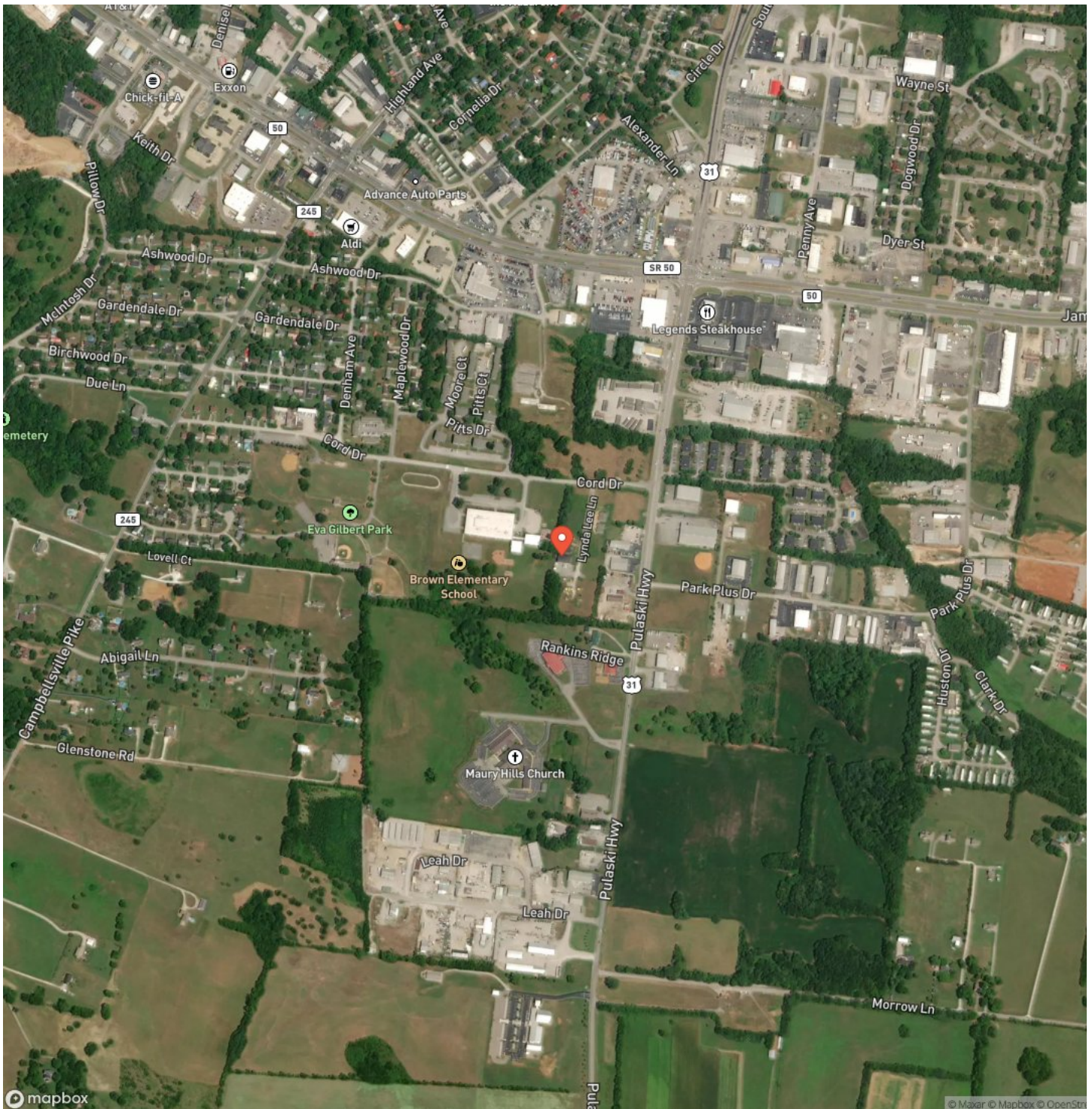


MORE INFO ONLINE:

www.mossyoakproperties.com

3,520 Sq Ft Commercial Building On 2.4 Acres In The Heart Of Columbia, TN
Columbia, TN / Maury County

Satellite Map



3,520 Sq Ft Commercial Building On 2.4 Acres In The Heart Of Columbia, TN Columbia, TN / Maury County

LISTING REPRESENTATIVE

For more information contact:



Representative

Jeremy Hall

Mobile

(931) 797-4868

Email

jhall@mossyoakproperties.com

Address

706 Columbia Avenue

City / State / Zip

Franklin, TN 37204

NOTES



MORE INFO ONLINE:

www.mossyoakproperties.com

[illegible]

DISCLAIMERS

Information in this brochure is provided solely for information purposes and does not constitute an offer to sell or advertise real estate outside the states in which broker or agent licensed. The information presented has been obtained from sources deemed to be reliable, but is not guaranteed or warranted by the agent, broker, or the sellers of these properties. This offering is subject to errors, omissions, prior sale, price change, correction or withdrawal from the market without notice. All references to age, square footage, income, expenses, acreage, carrying capacity, and land classification, etc. are approximate. Prospective buyers are chargeable with and expected to conduct their own independent investigation of the information and the property and to rely only on those results. Sellers reserve the right to accept or reject any and all offers without liability to any buyer or cooperating broker.

Maps are provided for illustration purposes only, the accuracy is not warranted. Parcels on interactive maps are not adjusted to match aerial backgrounds. This information is for reference purposes only and is not a legal document. Data maps contain errors. The seller and seller's agent are making known to all potential buyers that there may be variations between the location of the existing fence lines and the legal description of the deeded property. Seller and seller's agent make no warranties with regard to the location of the fence lines in relationship to the deeded property lines, nor does the Seller make any warranties or representations with regard to the specific acreage contained within the fenced property lines. Seller is selling the property in an "as is" condition, which includes the location of the fences as they exist. Boundaries shown on the accompanying maps are approximate, based on county parcel data. The maps are not to scale. The accuracy of the maps is not guaranteed. Prospective buyers are encouraged to verify fence lines, deeded property lines and acreages using a licensed surveyor at their own expense.



Mossy Oak Properties Tennessee Land & Farm
1276 Lewisburg Pike Ste. B
Franklin, TN 37064
(615) 879-8282
www.mossyoakproperties.com

