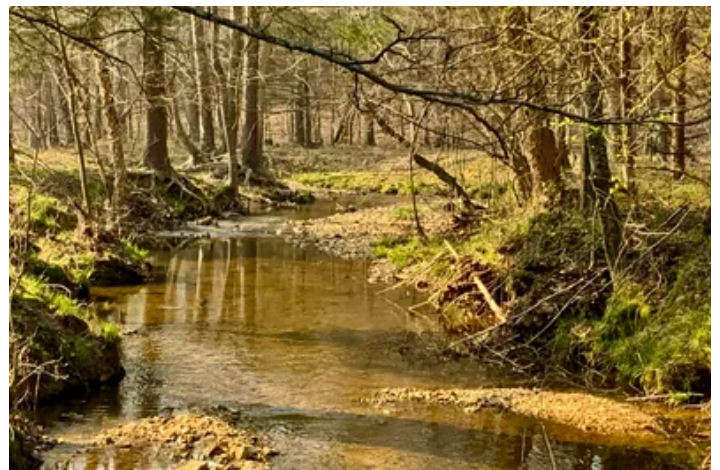


521 Acre Cattle Farm in Hardin County, Tennessee
0
Savannah, TN 38372

\$2,396,600
521± Acres
Hardin County



521 Acre Cattle Farm in Hardin County, Tennessee Savannah, TN / Hardin County

SUMMARY

Address

0 Hwy 69

City, State Zip

Savannah, TN 38372

County

Hardin County

Type

Farms, Hunting Land, Undeveloped Land, Timberland, Horse Property

Latitude / Longitude

35.03449 / -88.032189

Taxes (Annually)

1500

Dwelling Square Feet

0

Acreage

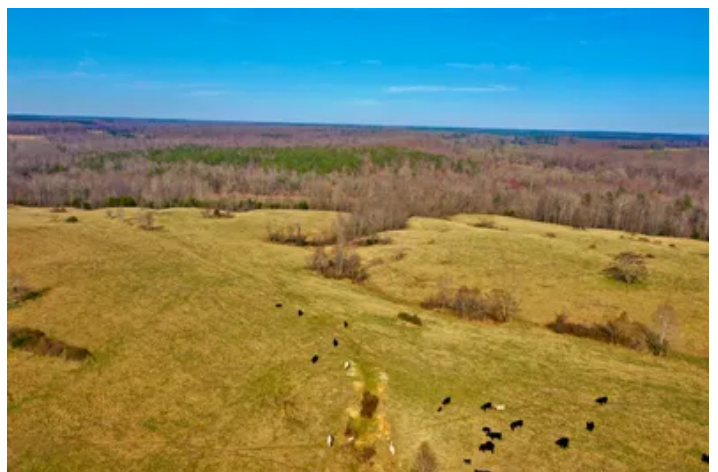
521

Price

\$2,396,600

Property Website

<https://www.mossyoakproperties.com/property/521-acre-cattle-farm-in-hardin-county-tennessee-hardin-tennessee/62171/>



521 Acre Cattle Farm in Hardin County, Tennessee Savannah, TN / Hardin County

PROPERTY DESCRIPTION

Located approximately 20 minutes from Savannah, the Tennessee River, and Pickwick Lake, this beautiful 521-acre legacy farm is located near the Walnut Grove community, with over 3100 feet of road frontage on Hwy 69. Whites Creek's right fork flows across the property, the property also has a couple of ponds. The land features fenced open pastures and a couple hundred acres of hardwood timber. A road runs through the center of the property from south to north from the highway. Healthy populations of Whitetail deer and Eastern Wild turkey are also present on the property. Historically the property has been a cattle farm and has been in the same family since the early 1950's.

About the area:

Hardin County was the site of the 1862 [Battle of Shiloh](#) (also known as the "Battle of Pittsburg Landing") during the [Civil War](#). The battleground site is 10 miles (16 km) southwest of the city of Savannah. [Union](#) General [Ulysses S. Grant](#) commandeered the [Cherry Mansion](#) just off the city square for use as a headquarters during the battle.

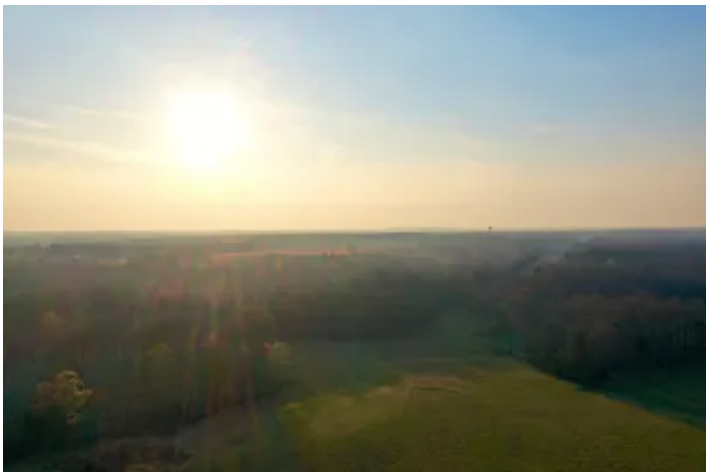
[Pickwick Landing State Park](#) is 12 miles (19 km) south of Savannah. Originally a steamboat stop, the [Tennessee Valley Authority](#) bought the site in the 1930s during the Great Depression and constructed a dam and [Pickwick Lake](#) so electricity could be generated. In 1969, Tennessee bought 681 acres (276 ha) from the TVA and made it a state park

For More Information Contact:

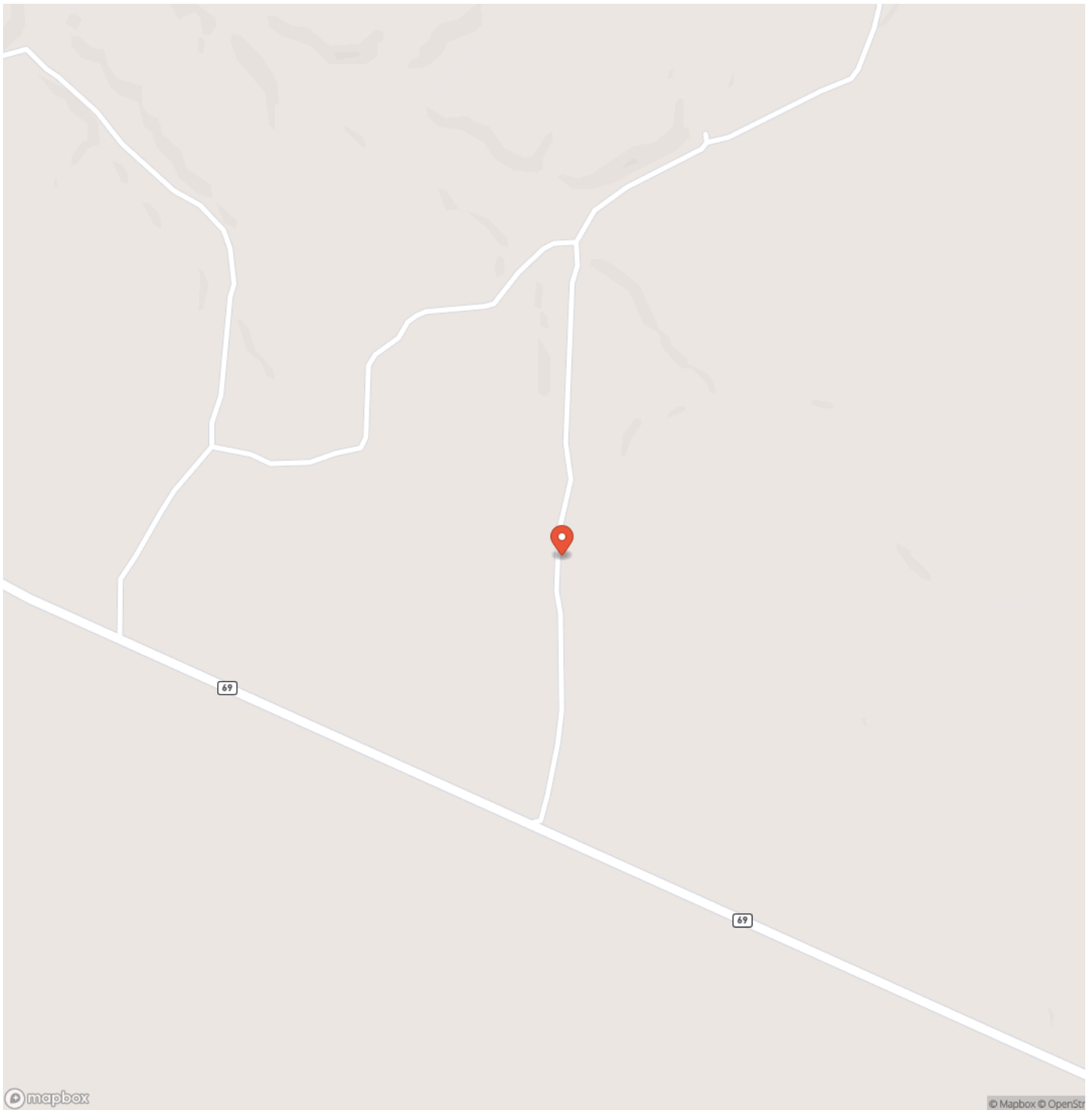
Affiliate Broker Chris Dowdy [615-506-0776](tel:615-506-0776), cdowdy@mossyoakproperties.com



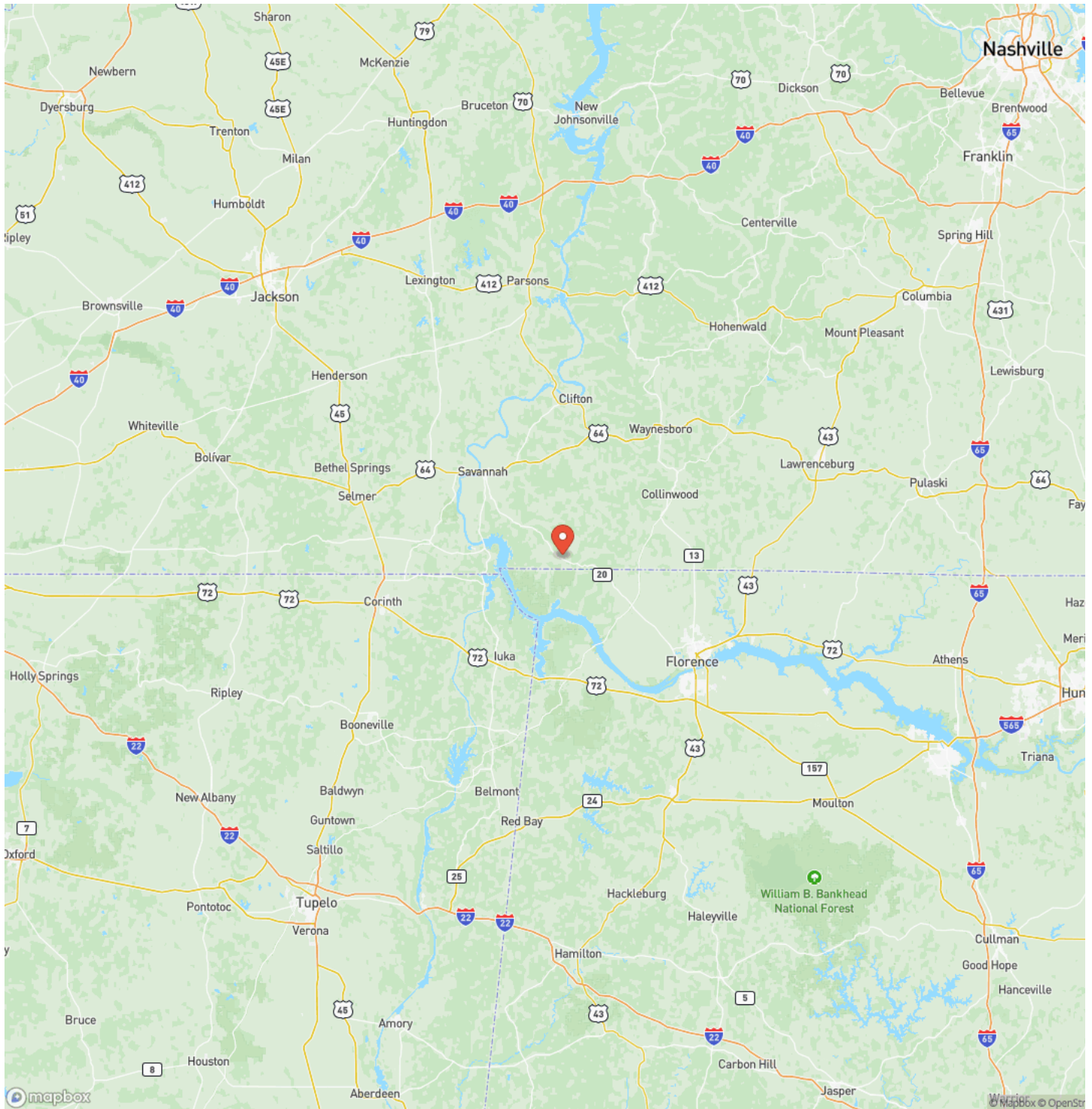
521 Acre Cattle Farm in Hardin County, Tennessee
Savannah, TN / Hardin County



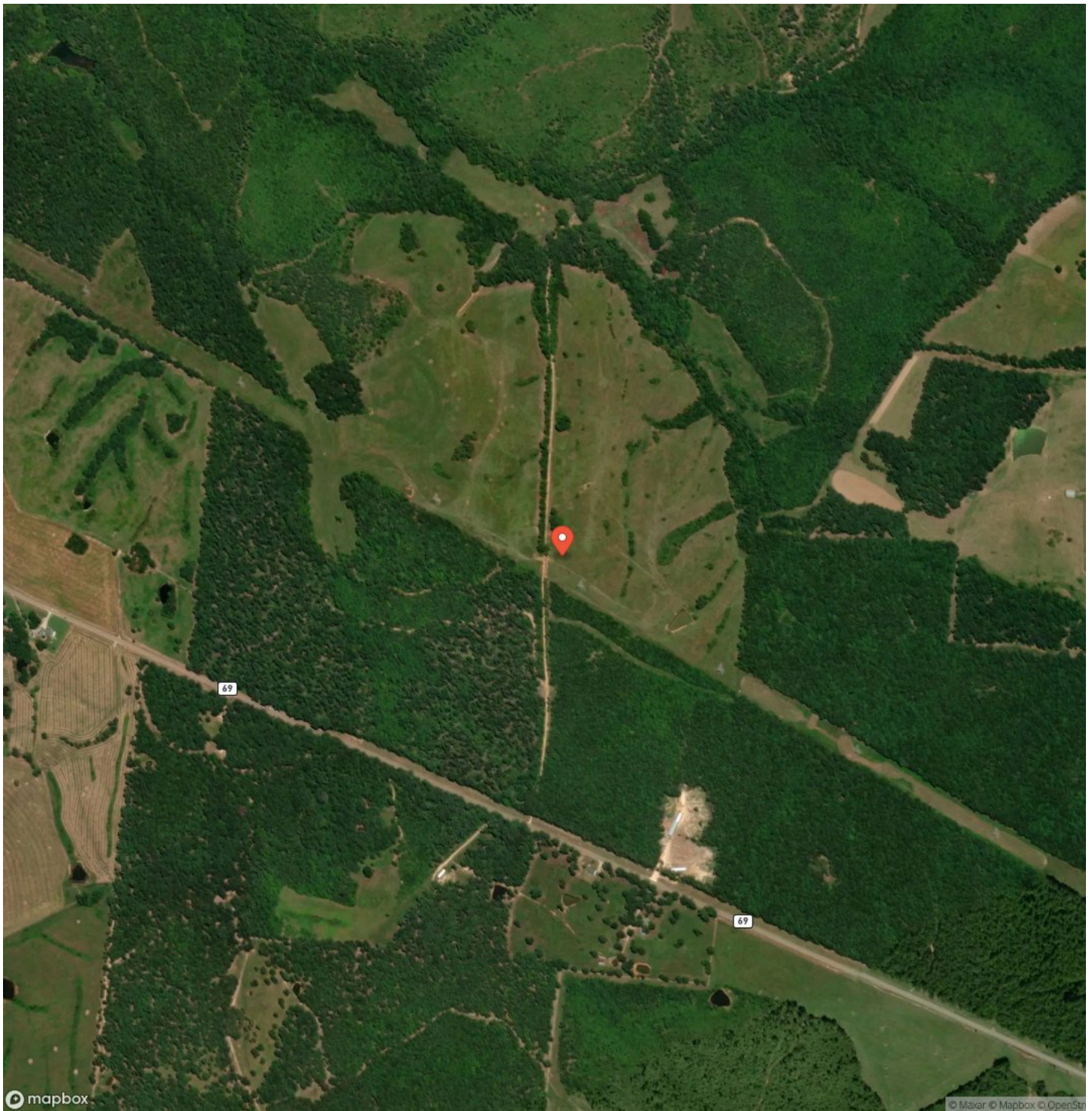
Locator Map



Locator Map



Satellite Map



521 Acre Cattle Farm in Hardin County, Tennessee Savannah, TN / Hardin County

LISTING REPRESENTATIVE

For more information contact:



Representative

Chris Dowdy

Mobile

(615) 506-0776

Office

(615) 879-8282

Email

cdowdy@mossyoakproperties.com

Address

714 "A" Donelson Pkwy

City / State / Zip

NOTES

This image shows a blank sheet of white paper with horizontal ruling lines. The lines are evenly spaced and run across the width of the page. There are no margins, text, or other markings on the paper.

This image shows a single sheet of white paper with horizontal blue ruling lines. The lines are evenly spaced and run across the width of the page. There are no margins, text, or other markings on the paper.



www.mossyoakproperties.com

DISCLAIMERS

Information in this brochure is provided solely for information purposes and does not constitute an offer to sell or advertise real estate outside the states in which broker or agent licensed. The information presented has been obtained from sources deemed to be reliable, but is not guaranteed or warranted by the agent, broker, or the sellers of these properties. This offering is subject to errors, omissions, prior sale, price change, correction or withdrawal from the market without notice. All references to age, square footage, income, expenses, acreage, carrying capacity, and land classification, etc. are approximate. Prospective buyers are chargeable with and expected to conduct their own independent investigation of the information and the property and to rely only on those results. Sellers reserve the right to accept or reject any and all offers without liability to any buyer or cooperating broker.

Maps are provided for illustration purposes only, the accuracy is not warranted. Parcels on interactive maps are not adjusted to match aerial backgrounds. This information is for reference purposes only and is not a legal document. Data maps contain errors. The seller and seller's agent are making known to all potential buyers that there may be variations between the location of the existing fence lines and the legal description of the deeded property. Seller and seller's agent make no warranties with regard to the location of the fence lines in relationship to the deeded property lines, nor does the Seller make any warranties or representations with regard to the specific acreage contained within the fenced property lines. Seller is selling the property in an "as is" condition, which includes the location of the fences as they exist. Boundaries shown on the accompanying maps are approximate, based on county parcel data. The maps are not to scale. The accuracy of the maps is not guaranteed. Prospective buyers are encouraged to verify fence lines, deeded property lines and acreages using a licensed surveyor at their own expense.



Mossy Oak Properties Tennessee Land & Farm
1276 Lewisburg Pike Ste. B
Franklin, TN 37064
(615) 879-8282
www.mossyOakproperties.com

