

**Owner Financing Available! Beautiful Brick Home with  
Large Morton Shop in Hickman County!**  
2855 Hwy 230 W  
Nunnely, TN 37137

**\$824,999**  
4.9± Acres  
Hickman County



**Owner Financing Available! Beautiful Brick Home with Large Morton Shop in Hickman County!  
Nunnely, TN / Hickman County**

**SUMMARY**

**Address**

2855 Hwy 230 W

**City, State Zip**

Nunnely, TN 37137

**County**

Hickman County

**Type**

Residential Property

**Latitude / Longitude**

35.884815 / -87.543488

**Dwelling Square Feet**

3,436

**Bedrooms / Bathrooms**

3 / 2

**Acreage**

4.9

**Price**

\$824,999

**Property Website**

<https://www.mossoakproperties.com/property/owner-financing-available-beautiful-brick-home-with-large-morton-shop-in-hickman-county-/hickman/tennessee/89221/>



## Owner Financing Available! Beautiful Brick Home with Large Morton Shop in Hickman County! Nunnely, TN / Hickman County

---

### **PROPERTY DESCRIPTION**

Owner Financing Available! This all brick, custom-built estate offering the perfect balance of country privacy and modern convenience. Situated on nearly 5 acres, this 3,436 sq. ft. home was built in 2020 with quality craftsmanship and energy efficiency in mind. Step inside to an inviting open floor plan filled with natural light, Tennessee red oak hardwood floors, and tile flooring. The chef's kitchen features quartz countertops, stainless steel appliances, a gas range, and an oversized 16 times 9 walk-in pantry/laundry combo. The main level offers three spacious bedrooms, an office or optional fourth bedroom, and a formal dining room that can easily serve as a fifth bedroom. A partially finished basement adds extra living and entertaining space. Outdoors, enjoy a screened porch overlooking the peaceful setting, along with a remarkable 5,250 sq. ft. Morton building shop, multiple garages, and ample covered parking, all power transmission lines are under ground. This property was thoughtfully designed for comfort and efficiency with 2 times 6 construction, foam insulation, handicap-accessible 36inch doors, tankless water heater, upgraded HVAC, Generac generator, and ML Connect fiber internet. Conveniently located just 10 minutes to I-40, this home offers an easy drive of about one hour to Nashville, making it ideal for commuting or city access. Recreational opportunities abound with Kentucky Lake only 30 minutes away, providing some of the best boating, fishing, and water activities in Middle Tennessee. This is more than a home-it's a private retreat designed for both everyday living and entertaining.

For more information contact listing agent Chris Dowdy. [\(615\) 506-0776](tel:6155060776) ; [cdowdy@mossyoakproperties.com](mailto:cdowdy@mossyoakproperties.com)

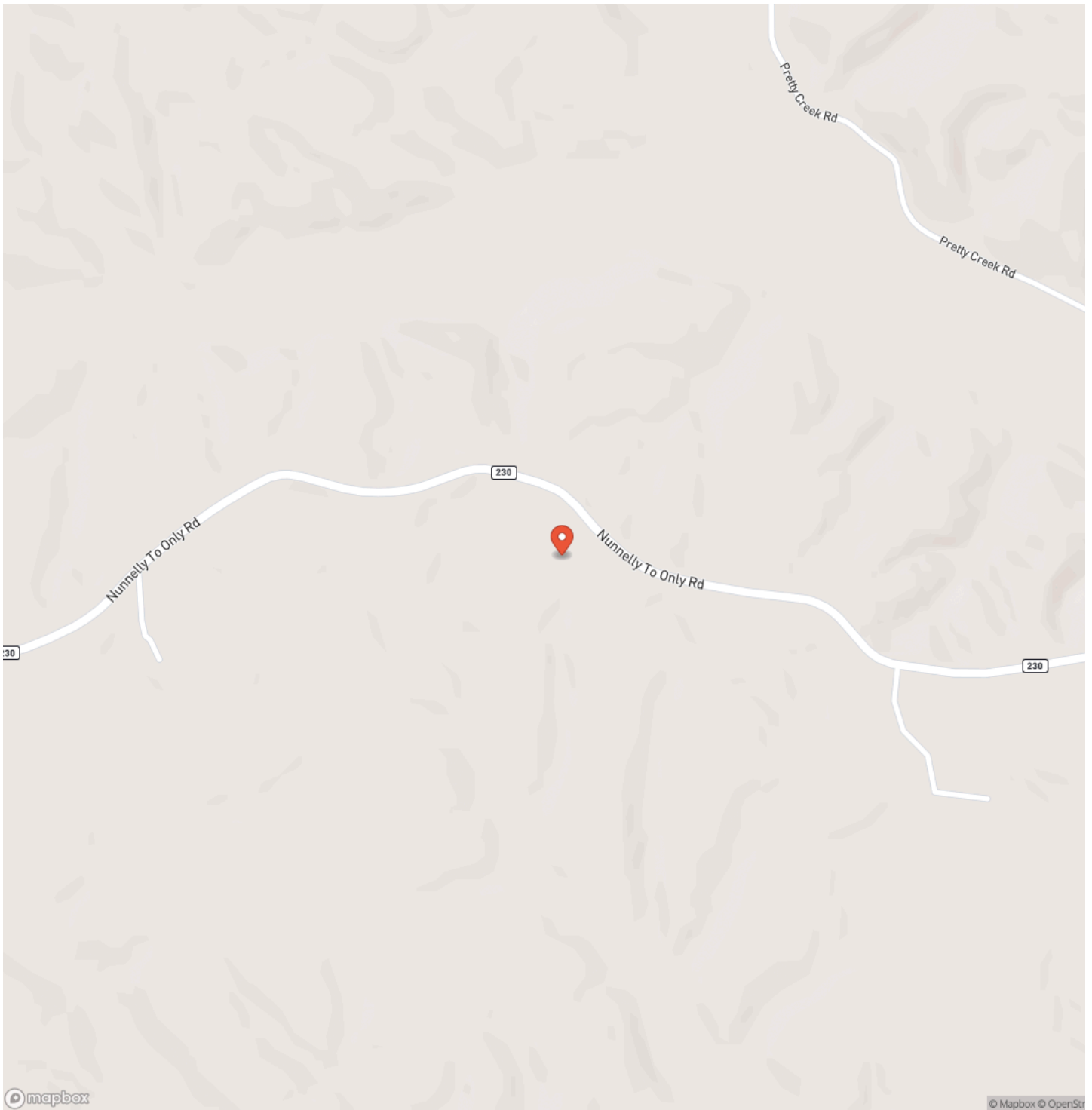


**Owner Financing Available! Beautiful Brick Home with Large Morton Shop in Hickman County!  
Nunnely, TN / Hickman County**



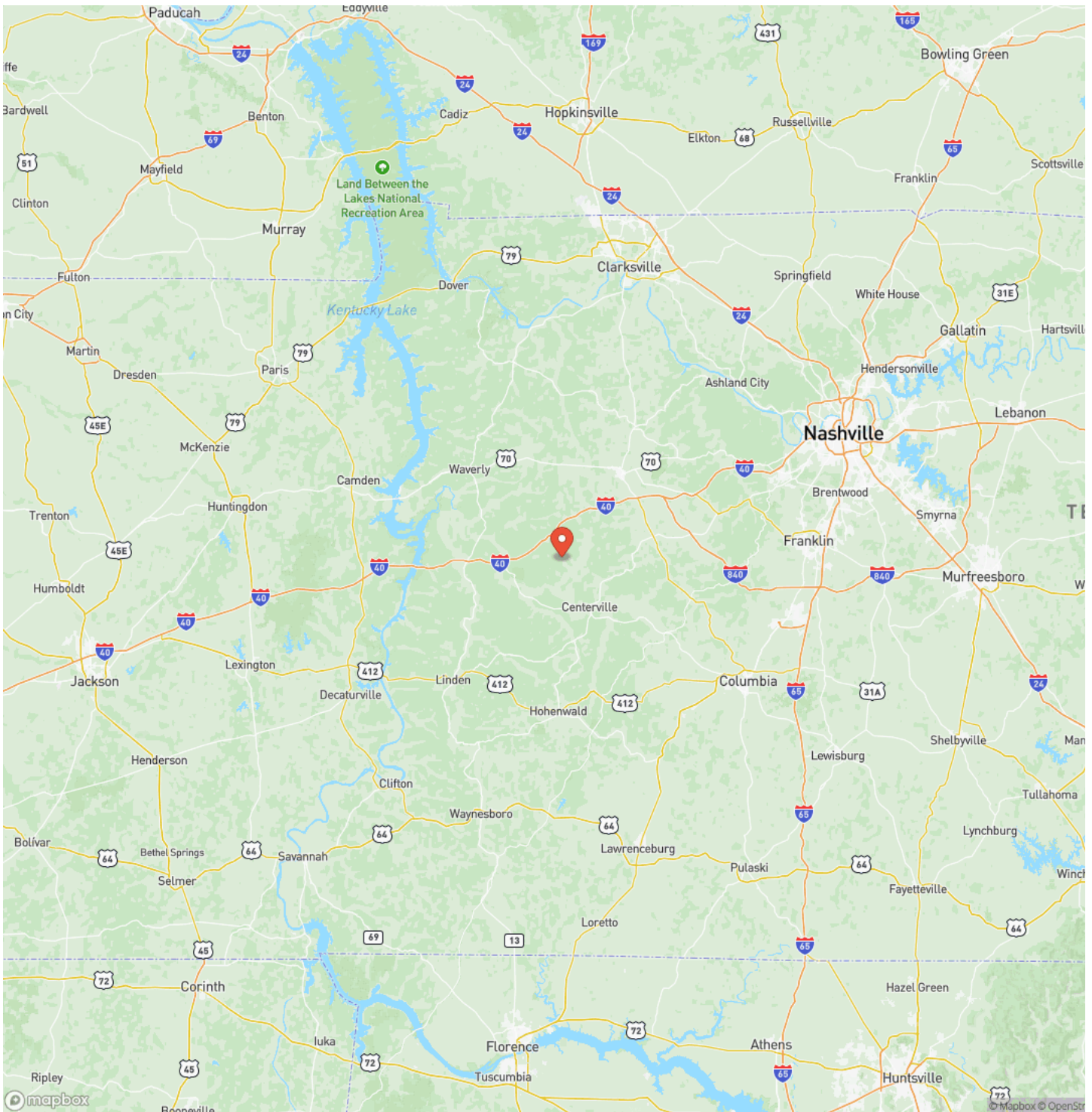
Owner Financing Available! Beautiful Brick Home with Large Morton Shop in Hickman County!  
Nunnely, TN / Hickman County

## Locator Map



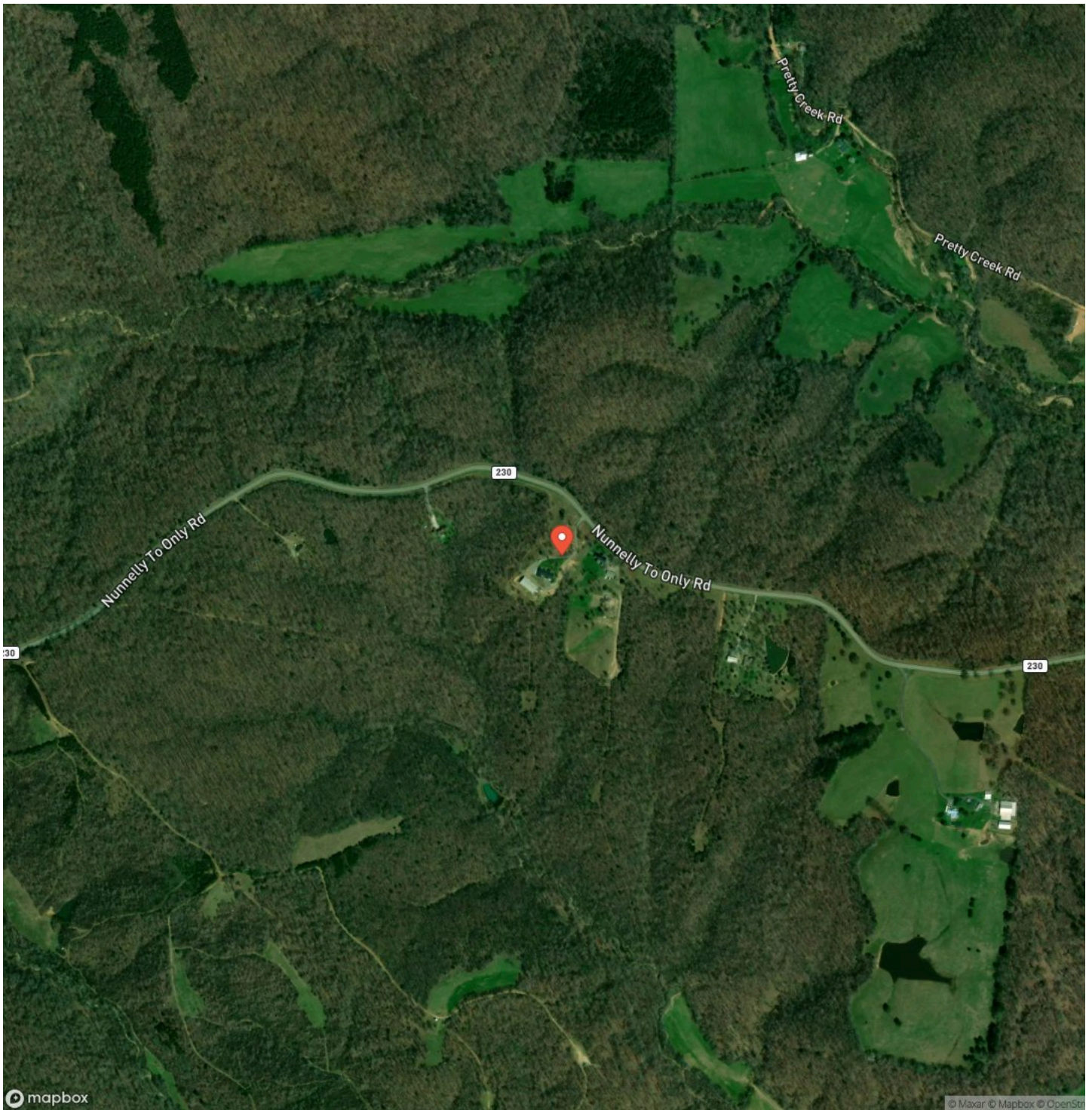
Owner Financing Available! Beautiful Brick Home with Large Morton Shop in Hickman County!  
Nunnely, TN / Hickman County

## Locator Map



Owner Financing Available! Beautiful Brick Home with Large Morton Shop in Hickman County!  
Nunnely, TN / Hickman County

## Satellite Map







**DISCLAIMERS**

Buyers agent to verify all information.



---

**Mossy Oak Properties Tennessee Land & Farm**  
1276 Lewisburg Pike Ste. B  
Franklin, TN 37064  
(615) 879-8282  
<https://www.mossyoakproperties.com/>

---

