

**Incredible 45.01 acre Tract over looking  
The Great Smokey Mountains National  
Park!**

**0 Jones Cove Road  
Cosby, TN 37722**

**\$149,000**

**45.010 +/- acres  
Sevier County**



# Incredible 45.01 acre Tract over looking The Great Smokey Mountains National Park! Cosby, TN / Sevier County

---

## **SUMMARY**

### **Address**

0 Jones Cove Road

### **City, State Zip**

Cosby, TN 37722

### **County**

Sevier County

### **Type**

Undeveloped Land, Hunting Land, Residential Property, Recreational Land

### **Latitude / Longitude**

35.8260555 / -83.3107752

### **Taxes (Annually)**

461

### **Acreage**

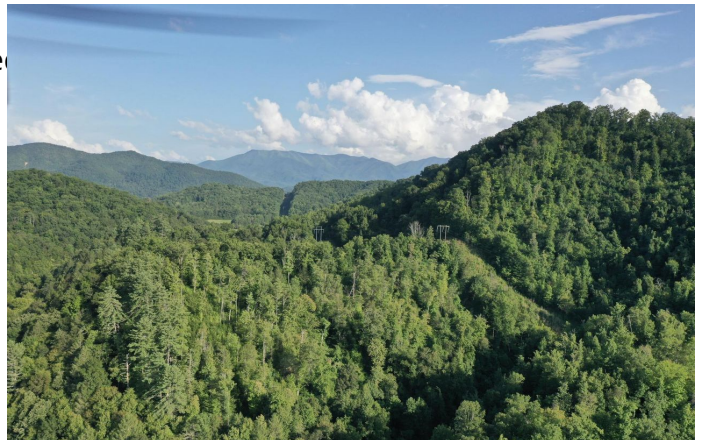
45.010

### **Price**

\$149,000

### **Property Website**

<https://www.mossoakproperties.com/property/incredible-45-01-acre-tract-over-looking-the-great-smokey-mountains-national-park-sevier-tennessee/21728/>





## **Incredible 45.01 acre Tract over looking The Great Smokey Mountains National Park! Cosby, TN / Sevier County**

---

### **PROPERTY DESCRIPTION**

Beautiful tract of land near Cosby, Tennessee in Sevier County, Located 15 minutes to both Gatlinburg and Sevierville. The property has small field area on the lower portion of the property complete with a creek and old barn. The upper portion of the property have surreal views of The Great Smokey Mountain National Park. There is electric at the road. Zones A-1. Buyers agent to verify all pertinent information.

For more information contact:

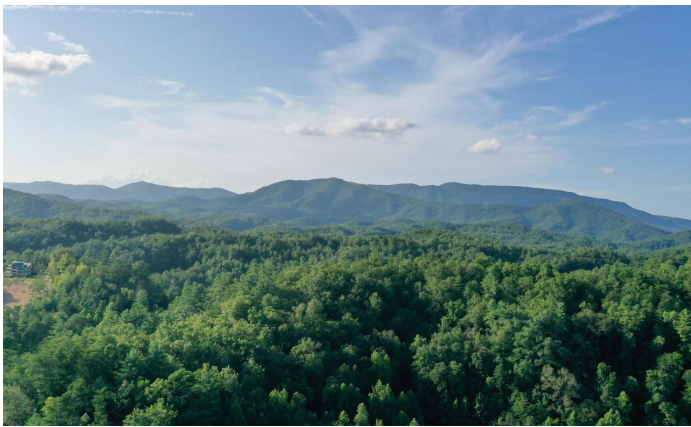
Chris Dowdy- Affiliate broker 615-506-0776.

[cdowdy@mossyoakproperties.com](mailto:cdowdy@mossyoakproperties.com)



**Incredible 45.01 acre Tract over looking The Great Smokey Mountains National Park!  
Cosby, TN / Sevier County**

---



## Locator Maps





Incredible 45.01 acre Tract over looking The Great Smokey Mountains National Park!  
Cosby, TN / Sevier County

---

# Aerial Maps



Incredible 45.01 acre Tract over looking The Great Smokey Mountains National Park!  
Cosby, TN / Sevier County

---

**LISTING REPRESENTATIVE**

For more information contact:



**Representative**

Chris Dowdy

**Mobile**

(615) 506-0776

**Email**

cdowdy@mossyoakproperties.com

**Address**

714 'A' Donelson Pkwy

**City / State / Zip**

Dover, TN 37058

---

**NOTES**

---

---

---

---

---

---

---



[illegible]



## **DISCLAIMERS**

Information in this brochure is provided solely for information purposes and does not constitute an offer to sell or advertise real estate outside the states in which broker or agent licensed. The information presented has been obtained from sources deemed to be reliable, but is not guaranteed or warranted by the agent, broker, or the sellers of these properties. This offering is subject to errors, omissions, prior sale, price change, correction or withdrawal from the market without notice. All references to age, square footage, income, expenses, acreage, carrying capacity, and land classification, etc. are approximate. Prospective buyers are chargeable with and expected to conduct their own independent investigation of the information and the property and to rely only on those results. Sellers reserve the right to accept or reject any and all offers without liability to any buyer or cooperating broker.

Maps are provided for illustration purposes only, the accuracy is not warranted. Parcels on interactive maps are not adjusted to match aerial backgrounds. This information is for reference purposes only and is not a legal document. Data maps contain errors. The seller and seller's agent are making known to all potential buyers that there may be variations between the location of the existing fence lines and the legal description of the deeded property. Seller and seller's agent make no warranties with regard to the location of the fence lines in relationship to the deeded property lines, nor does the Seller make any warranties or representations with regard to the specific acreage contained within the fenced property lines. Seller is selling the property in an "as is" condition, which includes the location of the fences as they exist. Boundaries shown on the accompanying maps are approximate, based on county parcel data. The maps are not to scale. The accuracy of the maps is not guaranteed. Prospective buyers are encouraged to verify fence lines, deeded property lines and acreages using a licensed surveyor at their own expense.



---

**Mossy Oak Properties Tennessee Land & Farm**  
706 Columbia Avenue  
Franklin, TN 37204  
(615) 879-8282  
[www.moptennessee.com](http://www.moptennessee.com)

---

