

SURVEY PLAT FOR DONE RIGHT REALTY

Situated in the State of Ohio, County of Monroe,
Township of Center, being in Section 6, Range 6
West, Township 5 North of the "M.D. Seven Ranges Survey".

PERTINENT DOCUMENTS

- (1) All deeds as shown.
- (2) County Tax Maps.
- (3) U.S.O.S. quadrangle map Lewisville.
- (4) Survey plats by Claus Surveying.
- (5) Survey plat by
- (6) Survey plat by

Subject to all legal right-of-ways, easements,
restrictions, reservations and zoning regulations
of record.
Subject to the 100-year Flood Plain restrictions,
if applicable.

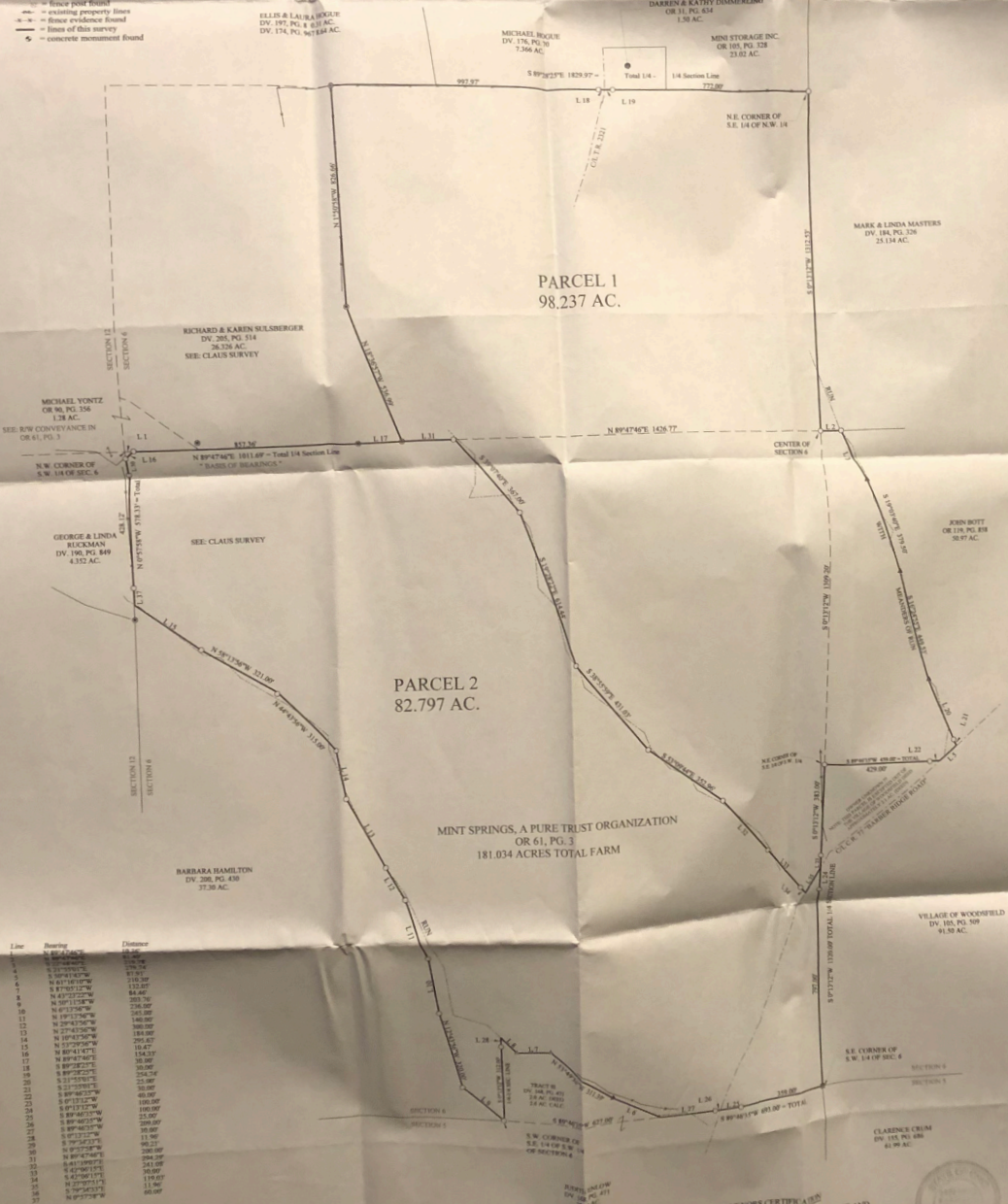
Subject to any facts that may be disclosed in a
full and accurate title search.

- = iron pin set capped "Biedenbach PS 7811"
- = iron pin found uncapped
- ⊙ = iron pin found capped "Class 6456"
- ⊙ = iron pin found capped "McFarland 6221"
- = unmarked stone found
- = marked stone found
- △ = survey angle point
- ⊕ = railroad spike or P.K. nail set
- ⊕ = railroad spike or P.K. nail found
- ⊕ = tree found with fence wire found
- ⊕ = fence post found
- = existing property lines
- - - = fence evidence found
- - - = lines of this survey
- ⊕ = concrete monument found

The bearings in this plat are for angle calculations
only and are based on the north line of the northwest
quarter of the southwest quarter of Section 6 used
as N 89°47'47" E.

SCALE: 1" = 200'

0 200 400



Line	Bearing	Distance
1	N 89°47'47" E	47.00
2	S 89°47'47" W	47.00
3	N 89°47'47" E	47.00
4	S 89°47'47" W	47.00
5	N 89°47'47" E	47.00
6	S 89°47'47" W	47.00
7	N 89°47'47" E	47.00
8	S 89°47'47" W	47.00
9	N 89°47'47" E	47.00
10	S 89°47'47" W	47.00
11	N 89°47'47" E	47.00
12	S 89°47'47" W	47.00
13	N 89°47'47" E	47.00
14	S 89°47'47" W	47.00
15	N 89°47'47" E	47.00
16	S 89°47'47" W	47.00
17	N 89°47'47" E	47.00
18	S 89°47'47" W	47.00
19	N 89°47'47" E	47.00
20	S 89°47'47" W	47.00
21	N 89°47'47" E	47.00
22	S 89°47'47" W	47.00
23	N 89°47'47" E	47.00
24	S 89°47'47" W	47.00
25	N 89°47'47" E	47.00
26	S 89°47'47" W	47.00
27	N 89°47'47" E	47.00
28	S 89°47'47" W	47.00
29	N 89°47'47" E	47.00
30	S 89°47'47" W	47.00
31	N 89°47'47" E	47.00
32	S 89°47'47" W	47.00
33	N 89°47'47" E	47.00
34	S 89°47'47" W	47.00
35	N 89°47'47" E	47.00
36	S 89°47'47" W	47.00

SURVEYORS CERTIFICATION

I HEREBY CERTIFY THAT THIS PLAT IS TRUE AND
CORRECT TO THE BEST OF MY KNOWLEDGE AND
THAT IT WAS PREPARED FROM AN ACCURATE
FIELD SURVEY OF THE PREMISES.

May 2017 *Gregory A. Biedenbach*
1860 Gregory A. Biedenbach
Ohio Registered Surveyor
No. 7881