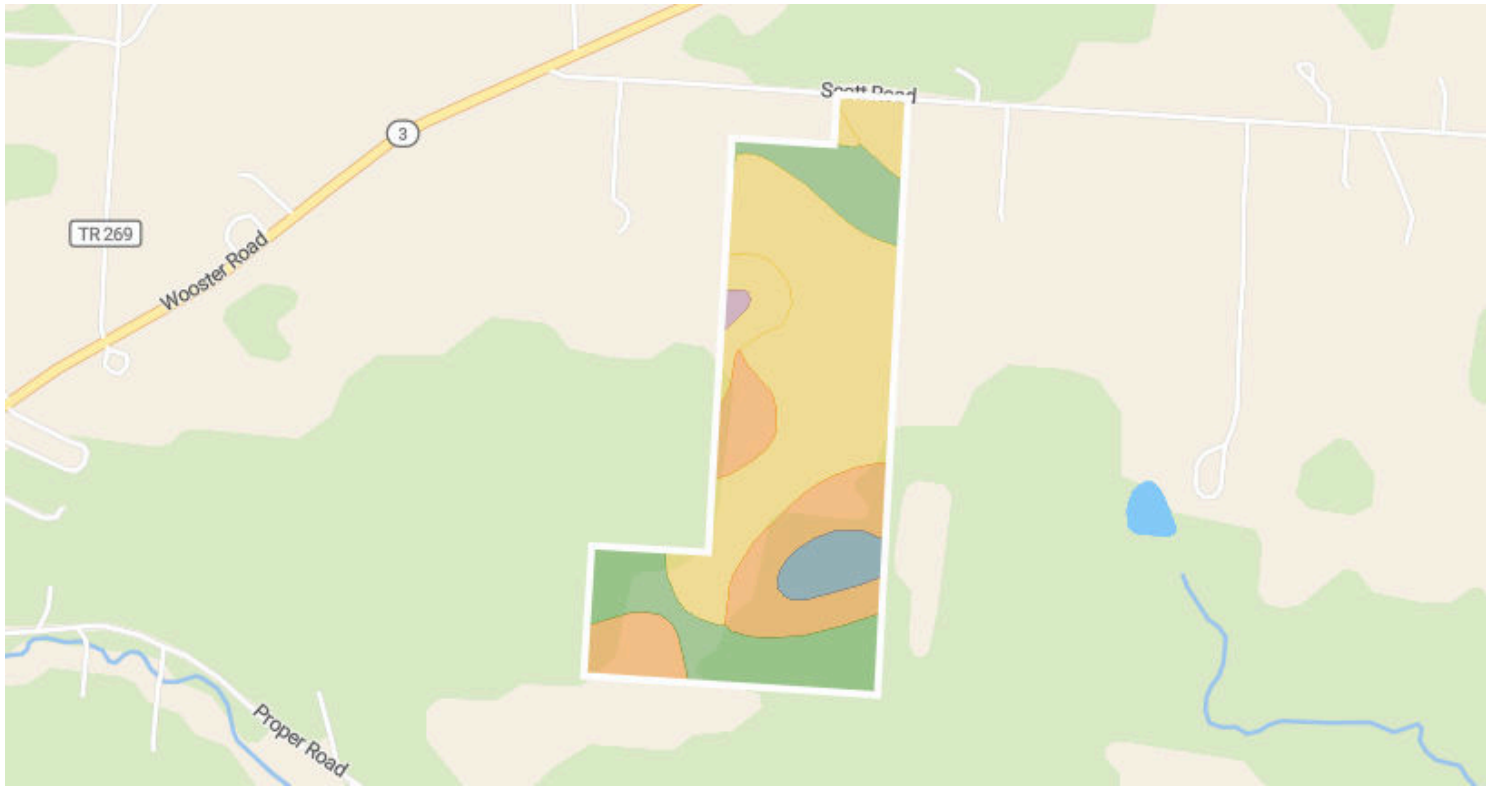


# Soils

38.4 Acres, 1 Boundary



**57.8** / 100 NCCPI

	Code	Soil Description	% of Selection	Acres	Non-IRR Class	IRR Class	NCCPI
●	HwB	Homewood silt loam, 2 to 6 percent slopes	44.1%	16.9	2e	--	64.4
●	GhC	Gilpin silt loam, 8 to 15 percent slopes	22.5%	8.6	3e	--	47.2
●	LvB	Loudonville silt loam, 2 to 6 percent slopes	15.5%	6	2e	--	58.7
●	TvB	Titusville silt loam, 2 to 6 percent slopes	7.4%	2.8	2e	--	54.2
●	LvC	Loudonville silt loam, 6 to 12 percent slopes	5.0%	1.9	3e	--	57.5

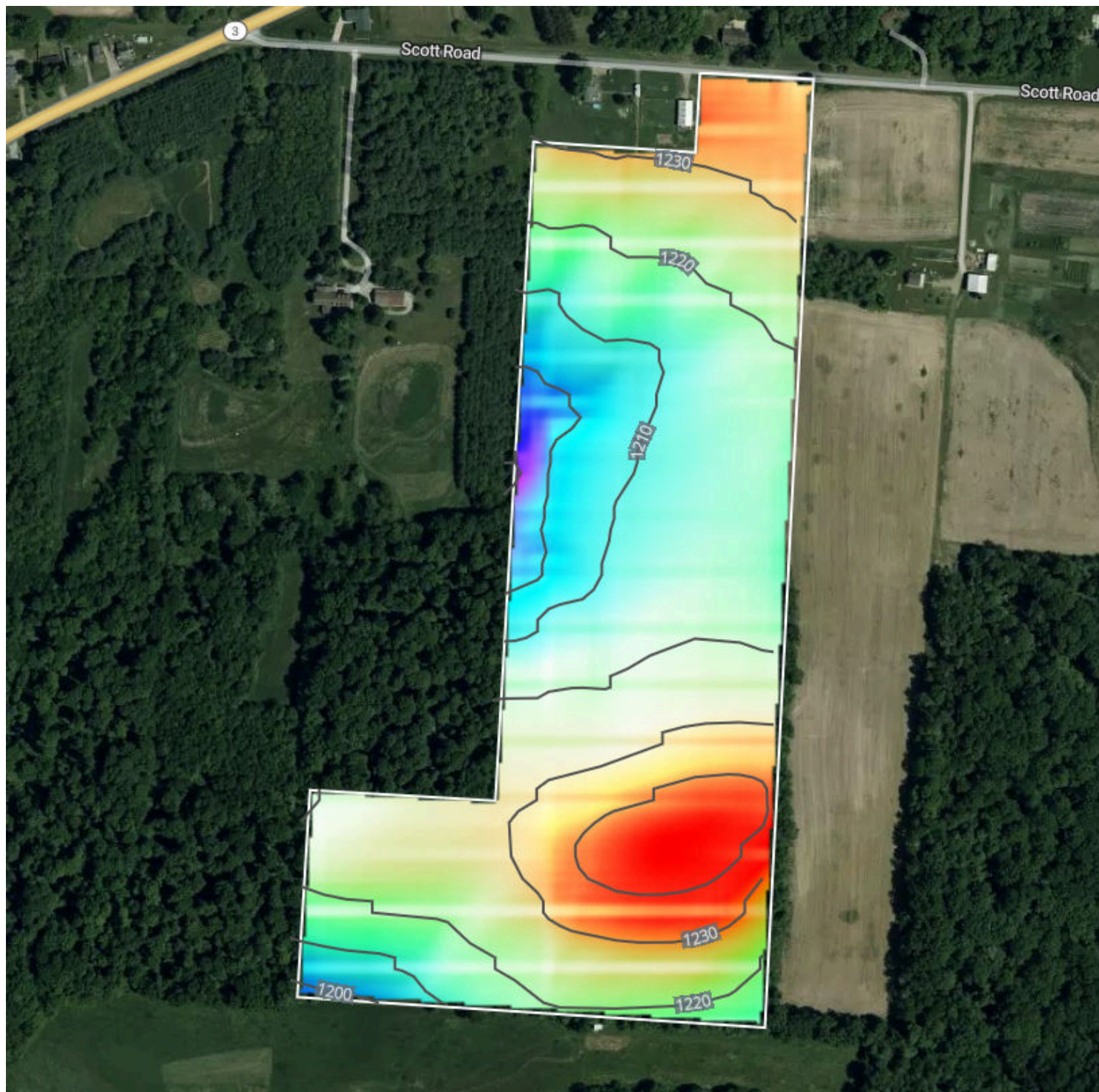
# Soils

38.4 Acres, 1 Boundary

	Code	Soil Description	% of Selection	Acres	Non-IRR Class	IRR Class	NCCPI
●	GhB	Gilpin silt loam, 3 to 8 percent slopes	4.8%	1.8	2e	--	50
●	LvD	Loudonville silt loam, 12 to 18 percent slopes	0.7%	0.3	4e	--	53.5
●	HwC	Homewood silt loam, 6 to 12 percent slopes	<0.1%	0	3e	--	63

# Elevation

38.4 Acres, 1 Boundary



1,186.9 feet

1,246.4 feet

Source: USGS 3 Meter Dem

Interval: 10 feet

Range: 59.5 feet

Min: 1186.9 feet

Max: 1246.4 feet

Slope: 4.4%

Min: 0.1%

Max: 14.9%

# Historical Imagery

38.4 Acres, 1 Boundary

2025



2023

