

MINNIE BUTTE RANCH

— 11,405± ACRES | CLAYTON, NEW MEXICO —

St. James
SPORTING PROPERTIES

www.SJSportingProperties.com

877-354-7247 | Info@SJSportingProperties.com

An aerial photograph of a vast, arid landscape. The foreground and middle ground are covered with numerous small, green, rounded shrubs scattered across a light brown, sandy terrain. In the distance, a prominent, isolated mountain peak with a flat top, known as Minnie Butte, rises above the horizon. The sky is a pale, clear blue.

MINNIE BUTTE

**MINNIE BUTTE RANCH IS A HIGH END TURN-KEY CATTLE RANCH WITH
TROPHY MULE DEER AND AN ABUNDANCE OF OTHER WILDLIFE.**



PROPERTY HIGHLIGHTS

- Located in Northeast New Mexico
- 11,405 deeded acres
- 2,990 acre state lease
- 320 acre private lease
- Fully working cattle ranch (1200-1400 yearlings)
- 10,000 gallon storage tank with several stock tanks
- Variety of drainages, arroyos, mesas and grassland
- Known for Trophy Mule Deer hunting
- Annually holds Antelope, Elk, Bear and Turkey
- 3,496 sq. ft. adobe style house





**THE NUMBER OF TROPHY CALIBER MULE DEER ROAMING
AROUND ON THE MINNIE BUTTE RANCH IS AMAZING.**



MINNIE BUTTE RANCH

11,405 ± ACRES | CLAYTON, NM

Minni Butte Ranch boasts 11,405.53+/- acres of pure excellence with a state lease of 2,990 acres and a private lease of 320 acres. The land offers numerous drainages, arroyos, mesas, expansive grassland. The primary name-sake of the property is the stunning and iconic landmark, Minnie Butte. The ranch is currently a cow-calf operation and has run yearlings in the past. The livestock working facilities include ten pastures, working pens, two scales, and a loading chute. A 10,000-gallon storage tank feeds several stock tanks throughout the ranch, providing water for livestock and wildlife. Several ponds/dirt tanks are scattered throughout the property as well making this a water-rich area. Along with its fantastic ranching capabilities are its equally excellent hunting opportunities. Food plots and blinds are set to perfection to ensure the ability to harvest trophy animals. This ranch has been managed for animal quality, only harvesting limited numbers to ensure trophy animals. The immaculate adobe-style house is the headquarters of the ranch, with four bedrooms and four bathrooms. Tile flooring throughout the home and kiva fireplaces in the living room and master bedroom create an authentic southwest feel. There is a large game room with a balcony overlooking the sprawling property.

HIGHLIGHTS

- 11,405 Deeded Acres
- Ponds and stock tanks throughout the property
- 10 pastures, working pens, scales and loading chute
- Supports up to 400 head of cattle (or 1200-1400 yearlings)
- Mix of drainages, mesas and grassland
- Outstanding Mule Deer hunting
- Hunting for Antelope, Elk, Bear, Mountain Lion and Turkey
- 45 minutes from Clayton, New Mexico

HUNTING

- Plenty of Trophy Mule Deer
- GMU 59
- OTC Mule Deer
- OTC Antelope
- OTC Elk
- Food plots and blinds established

LAND

- Mesas, Drainages and Grasslands
- Three seasonal creeks
- Pinons, cottonwood and native grass
- Well established water supply
- 4,700- 5,000 feet elevation
- Fencing in place

CLAYTON, NEW MEXICO

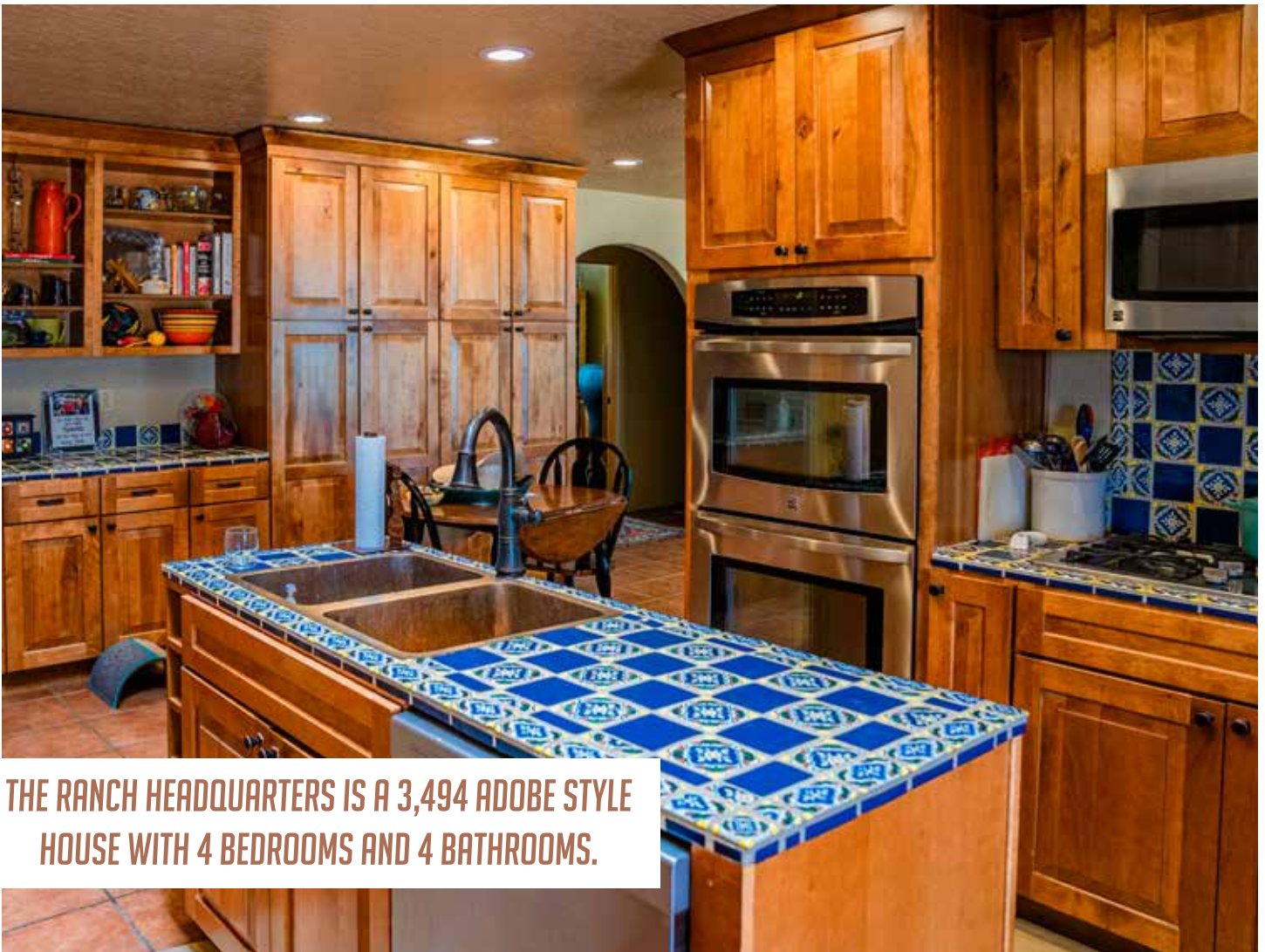
- 45 minute drive
- Shopping, restaurants, hotels
- Hiking and camping nearby
- Municipal airport





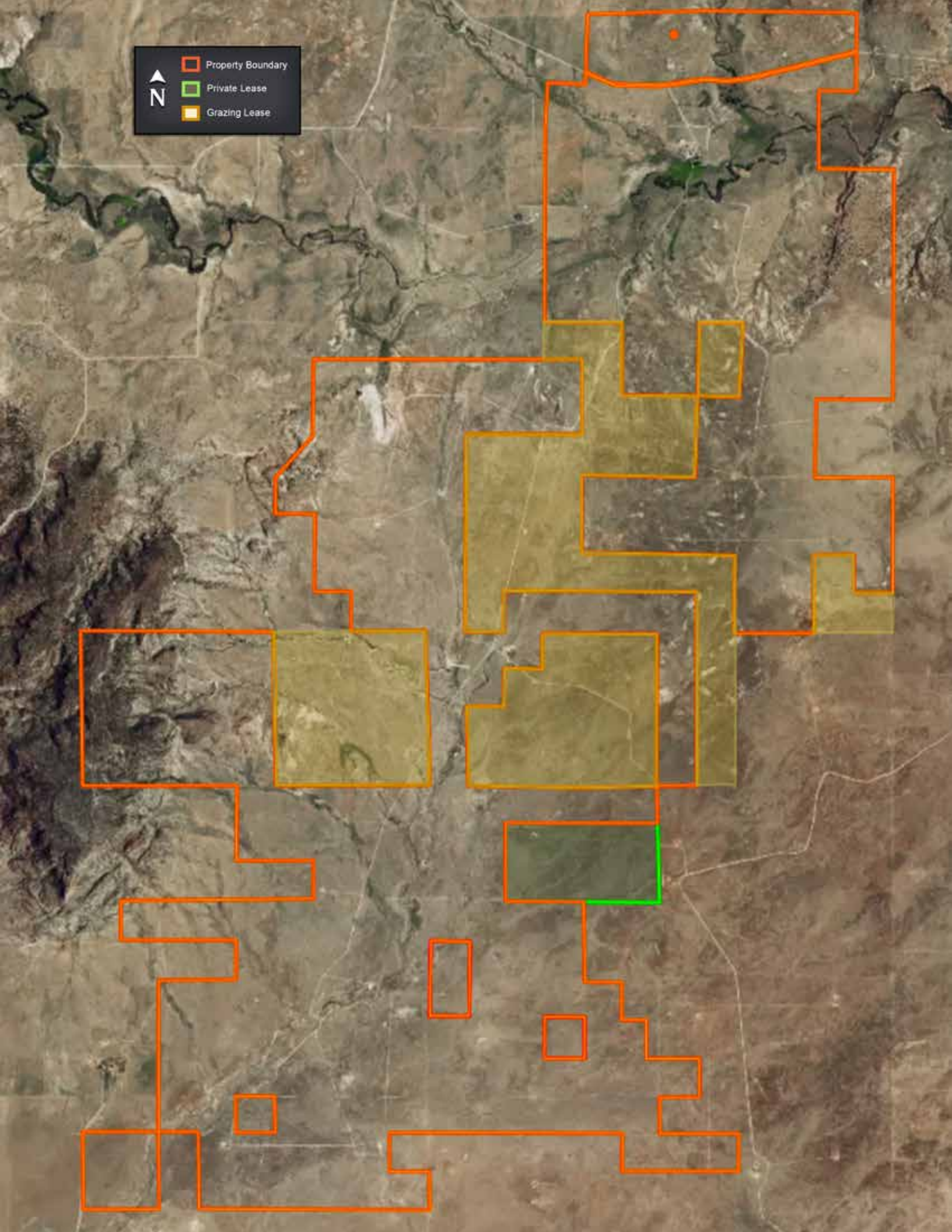


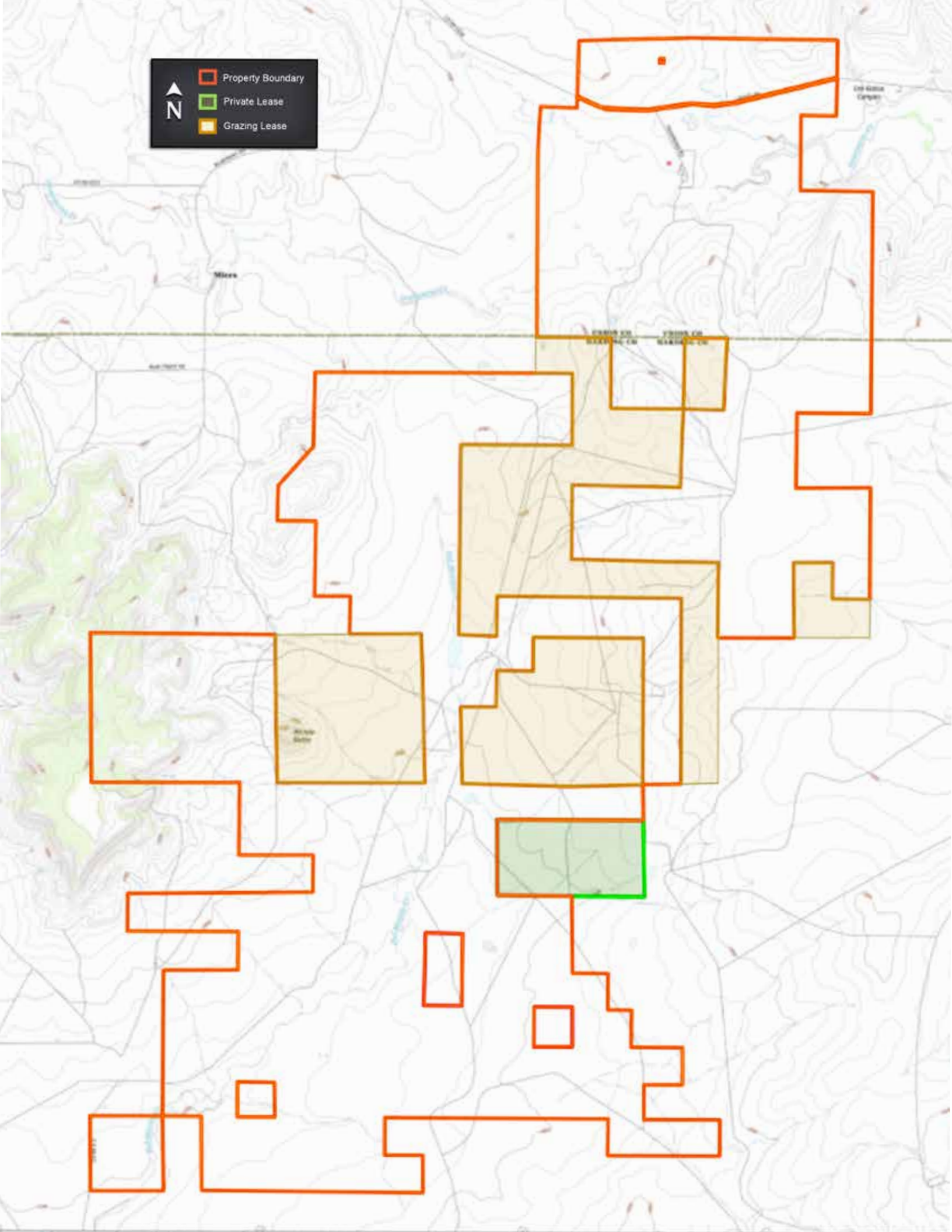
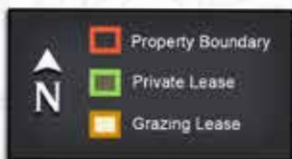




THE RANCH HEADQUARTERS IS A 3,494 ADOBE STYLE HOUSE WITH 4 BEDROOMS AND 4 BATHROOMS.







LOCATOR MAP



St. James

SPORTING PROPERTIES

721 Main St. Windsor, CO 80550

877-354-7247

Info@SJSportingProperties.com

www.SJSportingProperties.com

LICENSED IN:

Colorado, Idaho, Kansas, Montana, New Mexico, Oregon, Utah & Wyoming

The information contained here is obtained by this broker from sellers, owners, or other resources. This information is considered reliable, neither this broker nor owners make any guarantee, warranty or representation as to correctness of any data or descriptions and the accuracy of such statements. The correctness and/or accuracy of any and all statements should be determined through independent investigation made by the prospective purchaser. Please disregard this marketing material if your property is currently listed with another brokerage.