

2001 E FM 1379
2001 E FM 1379
Midland, TX 79706

\$1,285,000
54.470± Acres
Midland County



MOSSY OAK PROPERTIES
OF TEXAS

MORE INFO ONLINE:

MoreofTexas.com

2001 E FM 1379
Midland, TX / Midland County

SUMMARY

Address

2001 E FM 1379

City, State Zip

Midland, TX 79706

County

Midland County

Type

Ranches

Latitude / Longitude

31.71351 / -101.958678

Taxes (Annually)

118848

Dwelling Square Feet

2280

Bedrooms / Bathrooms

3 / 2

Acreage

54.470

Price

\$1,285,000

Property Website

<https://moreoftexas.com/detail/2001-e-fm-1379-midland-texas/44271/>



MOSSY OAK PROPERTIES
OF TEXAS

MORE INFO ONLINE:

MoreofTexas.com

PROPERTY DESCRIPTION

DEVELOPMENT POTENTIAL. A beautiful 3 bedroom, 2 bathroom home situated on a sprawling 54-acre property with a serene pond. This property offers the perfect blend of privacy, tranquility, and natural beauty.

The home itself features a spacious and open floor plan, with plenty of natural light flowing through large windows. The kitchen is equipped with modern appliances, ample storage space, and a breakfast bar for casual dining. The living room is cozy and inviting, with a fireplace the focal point.

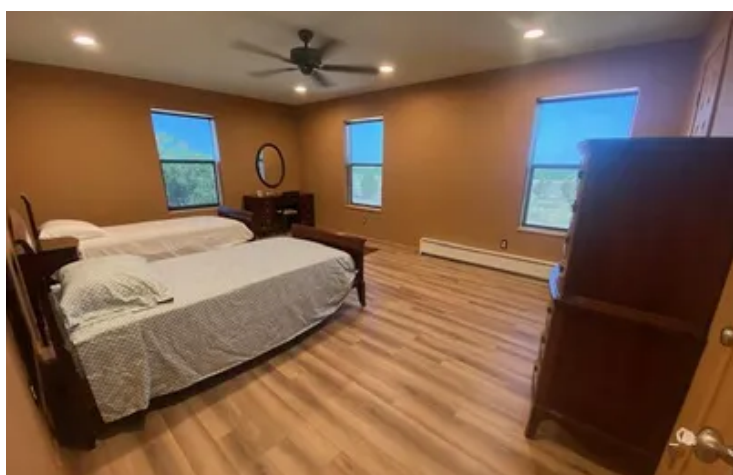
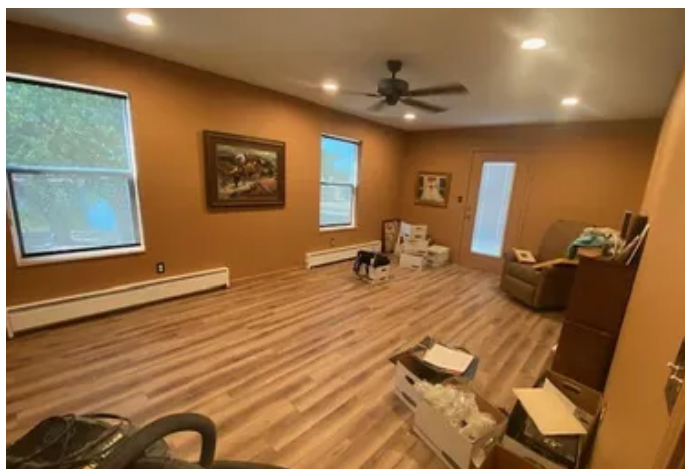
The master bedroom is a peaceful retreat, complete with an ensuite bathroom and a walk-in closet. The two additional bedrooms are generously sized and share a well-appointed bathroom.

Outside, the property boasts 54 acres of land to explore and enjoy. The pond is a highlight, providing a picturesque setting for fishing, boating, or simply relaxing by the water's edge. The surrounding land offers endless possibilities for outdoor activities such as hiking, horseback riding, or even starting your own hobby farm.

Whether you're looking for a private oasis to escape the hustle and bustle of city life or a property with potential for various outdoor pursuits, this 3 bed, 2 bath home on 54 acres with a pond is the perfect place to call home.

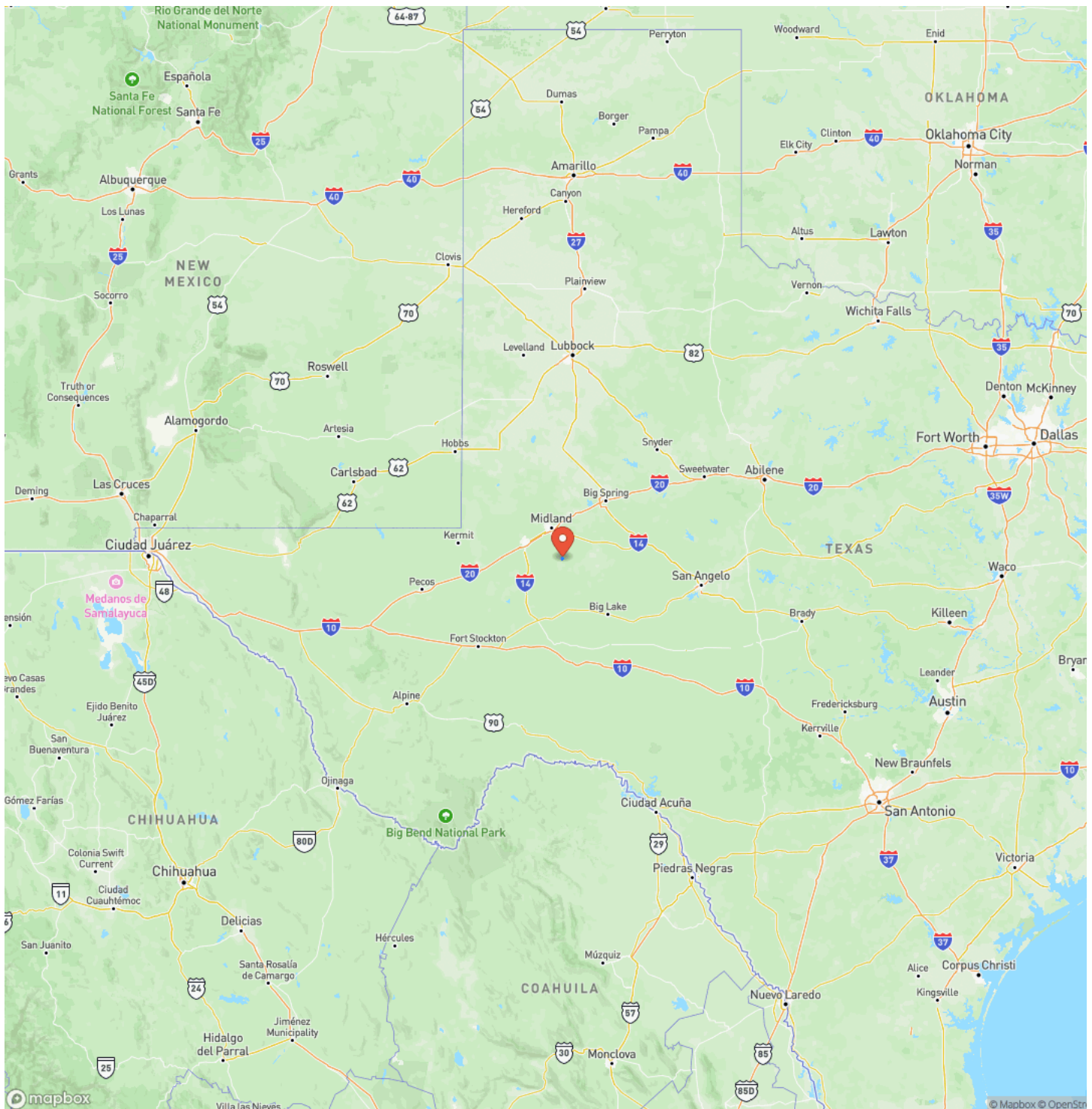


2001 E FM 1379
Midland, TX / Midland County



2001 E FM 1379
Midland, TX / Midland County

Locator Map



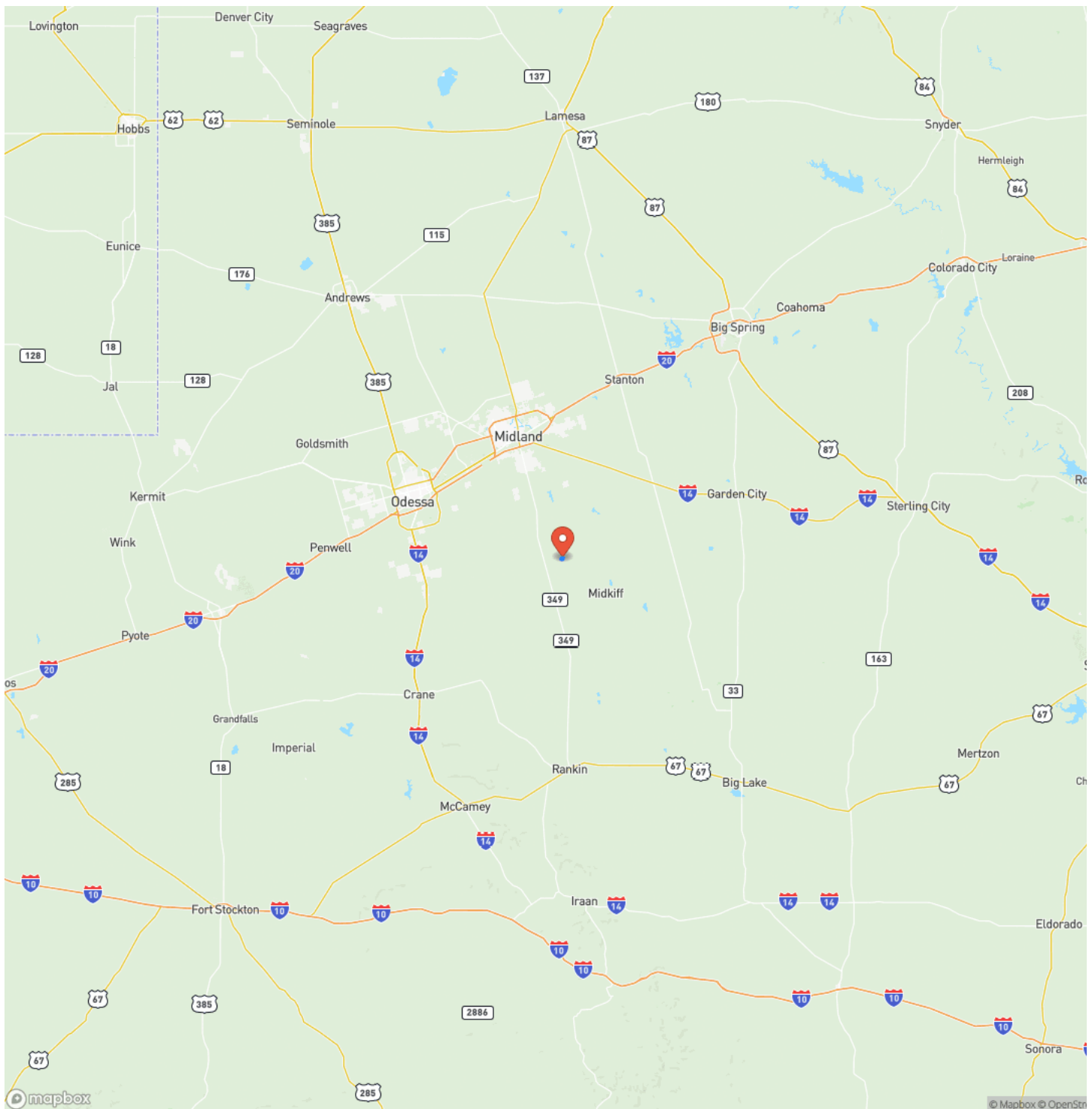
**MOSSY OAK PROPERTIES
OF TEXAS**

MORE INFO ONLINE:

MoreofTexas.com

2001 E FM 1379
Midland, TX / Midland County

Locator Map



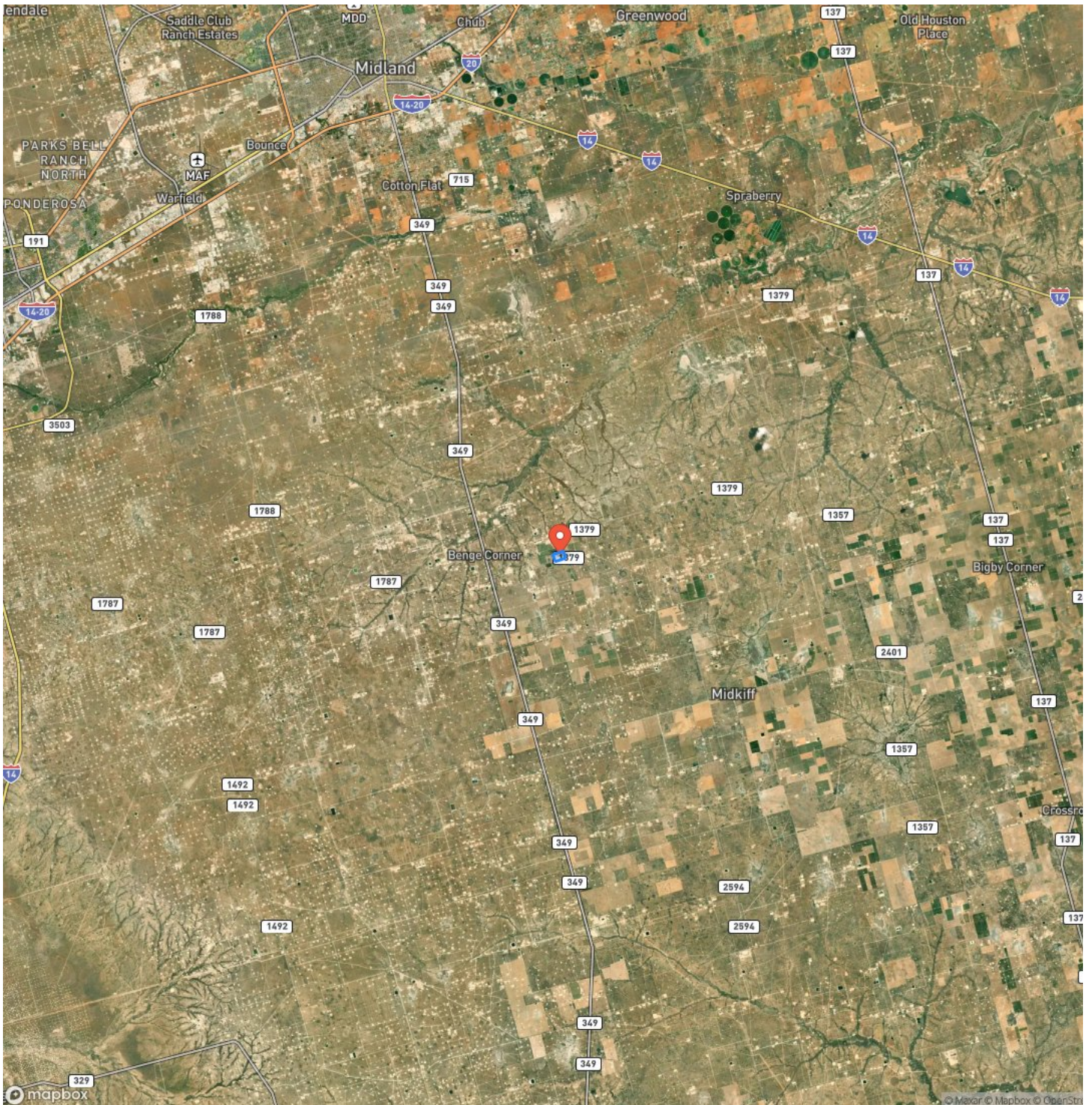
**MOSSY OAK PROPERTIES
OF TEXAS**

MORE INFO ONLINE:

MoreofTexas.com

2001 E FM 1379
Midland, TX / Midland County

Satellite Map



MOSSY OAK PROPERTIES
OF TEXAS

MORE INFO ONLINE:

MoreofTexas.com

2001 E FM 1379
Midland, TX / Midland County

LISTING REPRESENTATIVE

For more information contact:



Representative

TJ Guccini

Mobile

(432) 557-1276

Office

(432) 557-1276

Email

tjguccini@mossyoakproperties.com

Address

4000 W University

City / State / Zip

Denton, TX 6207

NOTES

[illegible]

**MOSSY OAK PROPERTIES
OF TEXAS**

MORE INFO ONLINE:

MoreofTexas.com

This image shows a single sheet of white paper with horizontal ruling lines. The lines are evenly spaced and extend across the width of the page. There are no margins, text, or other markings on the paper.



MoreofTexas.com

DISCLAIMERS

Information in this brochure is provided solely for information purposes and does not constitute an offer to sell or advertise real estate outside the states in which broker or agent licensed. The information presented has been obtained from sources deemed to be reliable, is not guaranteed or warranted by the agent, broker, or the sellers of these properties. This offering is subject to errors, omissions, prior sale, price change, correction or withdrawal from the market without notice. All references to age, square footage, income, expenses, acreage, carrying capacity, and land classification, etc. are approximate. Prospective buyers are chargeable with and expected to conduct their own independent investigation of the information and the property and to rely only on those results. Sellers reserve the right to accept or reject any and all offers without liability to any buyer or cooperating broker.

Maps are provided for illustration purposes only, the accuracy is not warranted. Parcels on interactive maps are not adjusted to match aerial backgrounds. This information is for reference purposes only and is not a legal document. Data maps contain errors. The seller and seller's agent are making known to all potential buyers that there may be variations between the location of the existing fence lines and the legal description of the deeded property. Seller and seller's agent make no warranties with regard to the location of the fence lines in relation to the deeded property lines, nor does the Seller make any warranties or representations with regard to the specific acreage contained within the fenced property lines. Seller is selling the property in an "as is" condition, which includes the location of the fences as they exist. Boundaries shown on the accompanying maps are approximate, based on county parcel data. The maps are not to scale. The accuracy of the maps is not guaranteed. Prospective buyers are encouraged to verify fence lines, deeded property lines and acreages using a licensed surveyor at their own expense.



**MOSSY OAK PROPERTIES
OF TEXAS**

MORE INFO ONLINE:

MoreofTexas.com

Mossy Oak Properties of Texas

4000 W University Dr

Denton, TX 76207

(833) 466-7389

MoreofTexas.com



**MOSSY OAK PROPERTIES
OF TEXAS**

MORE INFO ONLINE:

MoreofTexas.com