

NOTES:

THE PROPERTY SHOWN HEREON WAS SURVEYED BY FRANCIS O. LAWES, JR. AND ADJACENT LANDS SURVEYED BY A. R. GIBSON, JR. AND THE ENTIRE TRACT IS BEING CONVEYED TO THE DEVELOPER.

PLAT OF LOTS 20 (PART 23) AND LOTS 21 (PART 23) OF "INDIAN CAVES" SECTION V

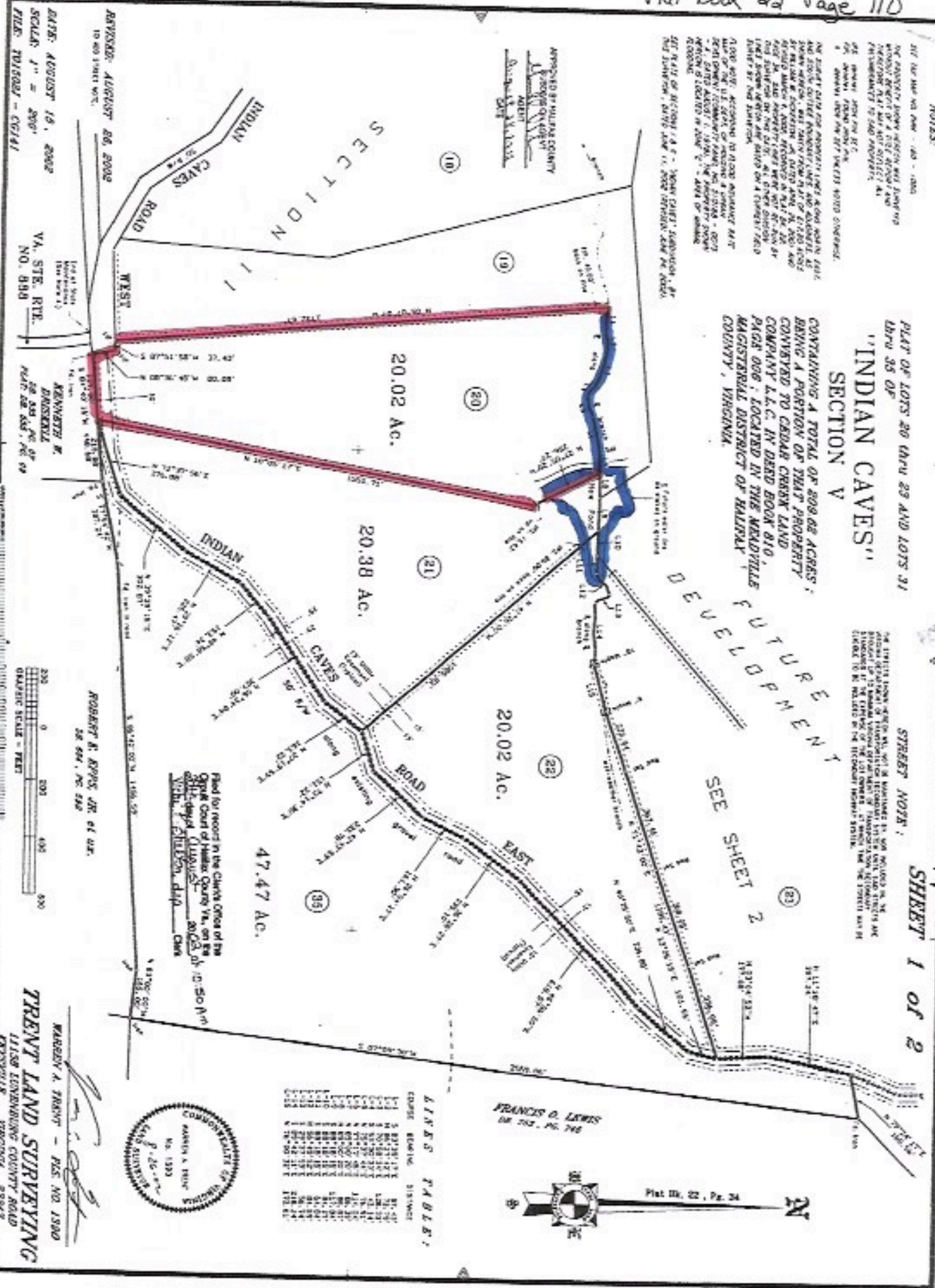
CONTAINING A TOTAL OF 209.88 ACRES; BEING A PORTION OF THAT PROPERTY OWNED BY CEDAR CREEK LAND COMPANY L.L.C. IN DEED BOOK 810, PAGE 688; LOCATED IN THE MEADOWS MAGISTERIAL DISTRICT OF HALL COUNTY, VIRGINIA.

STREET NOTE: THE STRIPS SHOWN HEREON ARE NOT INTENDED TO BE CONSIDERED AS A PART OF THE TRACT AND SHOULD NOT BE CONSIDERED AS A PART OF THE TRACT UNLESS SO INDICATED BY THE SURVEYOR'S NOTES.

SHEET 1 OF 2

Plat Book 22, No. 110

NO PART OF THIS SURVEY IS TO BE CONSIDERED AS A PART OF THE TRACT UNLESS SO INDICATED BY THE SURVEYOR'S NOTES. THE PROPERTY SHOWN HEREON WAS SURVEYED BY FRANCIS O. LAWES, JR. AND ADJACENT LANDS SURVEYED BY A. R. GIBSON, JR. AND THE ENTIRE TRACT IS BEING CONVEYED TO THE DEVELOPER.



FRANCIS O. LAWES, JR. OR 202, PG. 248



Plat 22, Pg. 24

LINES TABLE

LINE NO.	BEARING	DISTANCE
1	N 87° 28' 12" E	51.22
2	N 87° 28' 12" E	51.22
3	N 87° 28' 12" E	51.22
4	N 87° 28' 12" E	51.22
5	N 87° 28' 12" E	51.22
6	N 87° 28' 12" E	51.22
7	N 87° 28' 12" E	51.22
8	N 87° 28' 12" E	51.22
9	N 87° 28' 12" E	51.22
10	N 87° 28' 12" E	51.22
11	N 87° 28' 12" E	51.22
12	N 87° 28' 12" E	51.22
13	N 87° 28' 12" E	51.22
14	N 87° 28' 12" E	51.22
15	N 87° 28' 12" E	51.22
16	N 87° 28' 12" E	51.22
17	N 87° 28' 12" E	51.22
18	N 87° 28' 12" E	51.22
19	N 87° 28' 12" E	51.22
20	N 87° 28' 12" E	51.22
21	N 87° 28' 12" E	51.22
22	N 87° 28' 12" E	51.22
23	N 87° 28' 12" E	51.22
24	N 87° 28' 12" E	51.22
25	N 87° 28' 12" E	51.22
26	N 87° 28' 12" E	51.22
27	N 87° 28' 12" E	51.22
28	N 87° 28' 12" E	51.22
29	N 87° 28' 12" E	51.22
30	N 87° 28' 12" E	51.22
31	N 87° 28' 12" E	51.22
32	N 87° 28' 12" E	51.22
33	N 87° 28' 12" E	51.22
34	N 87° 28' 12" E	51.22
35	N 87° 28' 12" E	51.22
36	N 87° 28' 12" E	51.22
37	N 87° 28' 12" E	51.22
38	N 87° 28' 12" E	51.22
39	N 87° 28' 12" E	51.22
40	N 87° 28' 12" E	51.22
41	N 87° 28' 12" E	51.22
42	N 87° 28' 12" E	51.22
43	N 87° 28' 12" E	51.22
44	N 87° 28' 12" E	51.22
45	N 87° 28' 12" E	51.22
46	N 87° 28' 12" E	51.22
47	N 87° 28' 12" E	51.22
48	N 87° 28' 12" E	51.22
49	N 87° 28' 12" E	51.22
50	N 87° 28' 12" E	51.22
51	N 87° 28' 12" E	51.22
52	N 87° 28' 12" E	51.22
53	N 87° 28' 12" E	51.22
54	N 87° 28' 12" E	51.22
55	N 87° 28' 12" E	51.22
56	N 87° 28' 12" E	51.22
57	N 87° 28' 12" E	51.22
58	N 87° 28' 12" E	51.22
59	N 87° 28' 12" E	51.22
60	N 87° 28' 12" E	51.22
61	N 87° 28' 12" E	51.22
62	N 87° 28' 12" E	51.22
63	N 87° 28' 12" E	51.22
64	N 87° 28' 12" E	51.22
65	N 87° 28' 12" E	51.22
66	N 87° 28' 12" E	51.22
67	N 87° 28' 12" E	51.22
68	N 87° 28' 12" E	51.22
69	N 87° 28' 12" E	51.22
70	N 87° 28' 12" E	51.22
71	N 87° 28' 12" E	51.22
72	N 87° 28' 12" E	51.22
73	N 87° 28' 12" E	51.22
74	N 87° 28' 12" E	51.22
75	N 87° 28' 12" E	51.22
76	N 87° 28' 12" E	51.22
77	N 87° 28' 12" E	51.22
78	N 87° 28' 12" E	51.22
79	N 87° 28' 12" E	51.22
80	N 87° 28' 12" E	51.22
81	N 87° 28' 12" E	51.22
82	N 87° 28' 12" E	51.22
83	N 87° 28' 12" E	51.22
84	N 87° 28' 12" E	51.22
85	N 87° 28' 12" E	51.22
86	N 87° 28' 12" E	51.22
87	N 87° 28' 12" E	51.22
88	N 87° 28' 12" E	51.22
89	N 87° 28' 12" E	51.22
90	N 87° 28' 12" E	51.22
91	N 87° 28' 12" E	51.22
92	N 87° 28' 12" E	51.22
93	N 87° 28' 12" E	51.22
94	N 87° 28' 12" E	51.22
95	N 87° 28' 12" E	51.22
96	N 87° 28' 12" E	51.22
97	N 87° 28' 12" E	51.22
98	N 87° 28' 12" E	51.22
99	N 87° 28' 12" E	51.22
100	N 87° 28' 12" E	51.22



WARREN A. TRENT - PLS. NO. 1599
TRENT LAND SURVEYING
 11158 LEONARDING COUNTY ROAD
 EDWARDSVILLE, VIRGINIA 22987



DATE: AUGUST 19, 2002
 SCALE: 1" = 200'
 FILE: T915002 - C5141

APPROVED: AUGUST 26, 2002
 10 403 1347 001

VA. STE. RTE. NO. 930
 KENNETH W. DAVIS
 REGISTRAR