

**Modern Craftsman 3 Bed, 2 Bath Home on 13+ Acres in
Butler County, MO**
1085 County Road 420
Poplar Bluff, MO 63901

\$550,000
13.400± Acres
Butler County



Modern Craftsman 3 Bed, 2 Bath Home on 13+ Acres in Butler County, MO
Poplar Bluff, MO / Butler County

SUMMARY

Address

1085 County Road 420

City, State Zip

Poplar Bluff, MO 63901

County

Butler County

Type

Residential Property, Recreational Land

Latitude / Longitude

36.834721 / -90.506278

Dwelling Square Feet

4190

Bedrooms / Bathrooms

3 / 2

Acreage

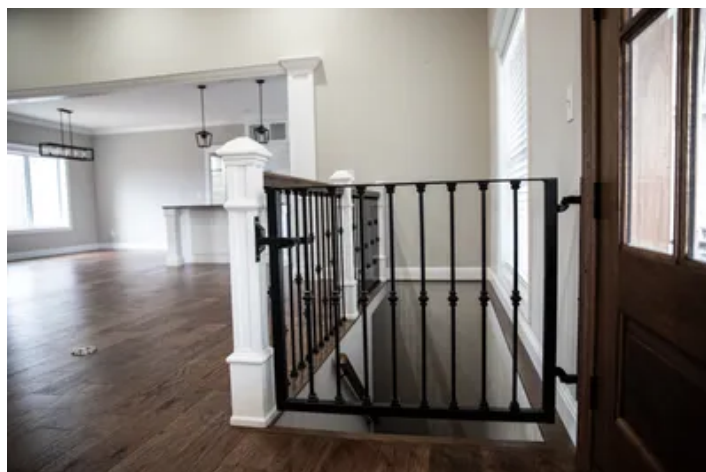
13.400

Price

\$550,000

Property Website

<https://www.mossyoakproperties.com/property/modern-craftsman-3-bed-2-bath-home-on-13-acres-in-butler-county-mo-butler-missouri/49346/>



MORE INFO ONLINE:

MossyOakProperties.com

Modern Craftsman 3 Bed, 2 Bath Home on 13+ Acres in Butler County, MO

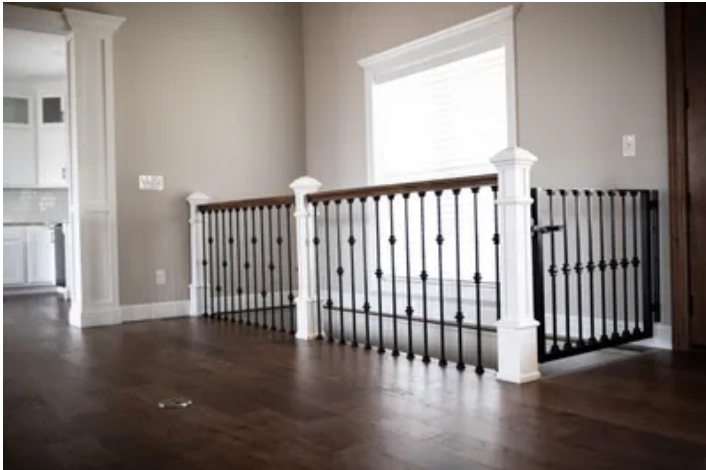
Poplar Bluff, MO / Butler County

PROPERTY DESCRIPTION

This is just what you have been waiting for! Gorgeous, 3 bedroom, 2 bath, custom build Modern Craftsman style home with full basement, large 44x60 shop/outbuilding all on 13.4 acres. This home features custom arched mahogany 9-foot front doors, hickory hardwood flooring, custom white maple cabinets, granite counters, Frigidaire Professional stainless appliances, 12-foot ceilings in the living room, and large stone fireplace with gas fireplace. The master bedroom suite has dual walk-in closets with a large custom walk-in steam shower and freestanding bathtub. The 44x60 shop building is insulated with HVAC and has a full bath with washer and dryer hookups. This home is very energy efficient with a 20 seer heat pump and has fiber internet.



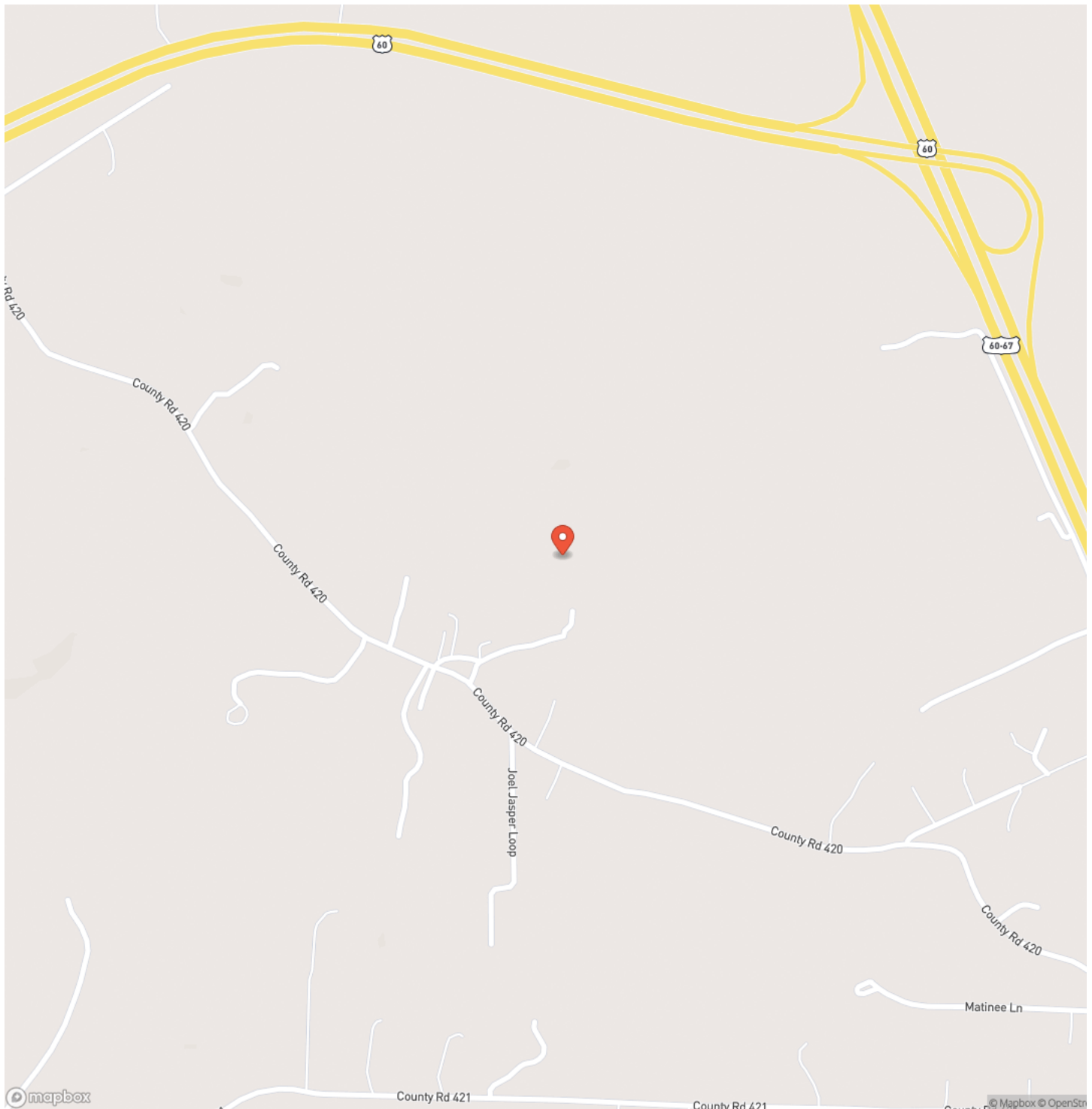
Modern Craftsman 3 Bed, 2 Bath Home on 13+ Acres in Butler County, MO
Poplar Bluff, MO / Butler County



MORE INFO ONLINE:

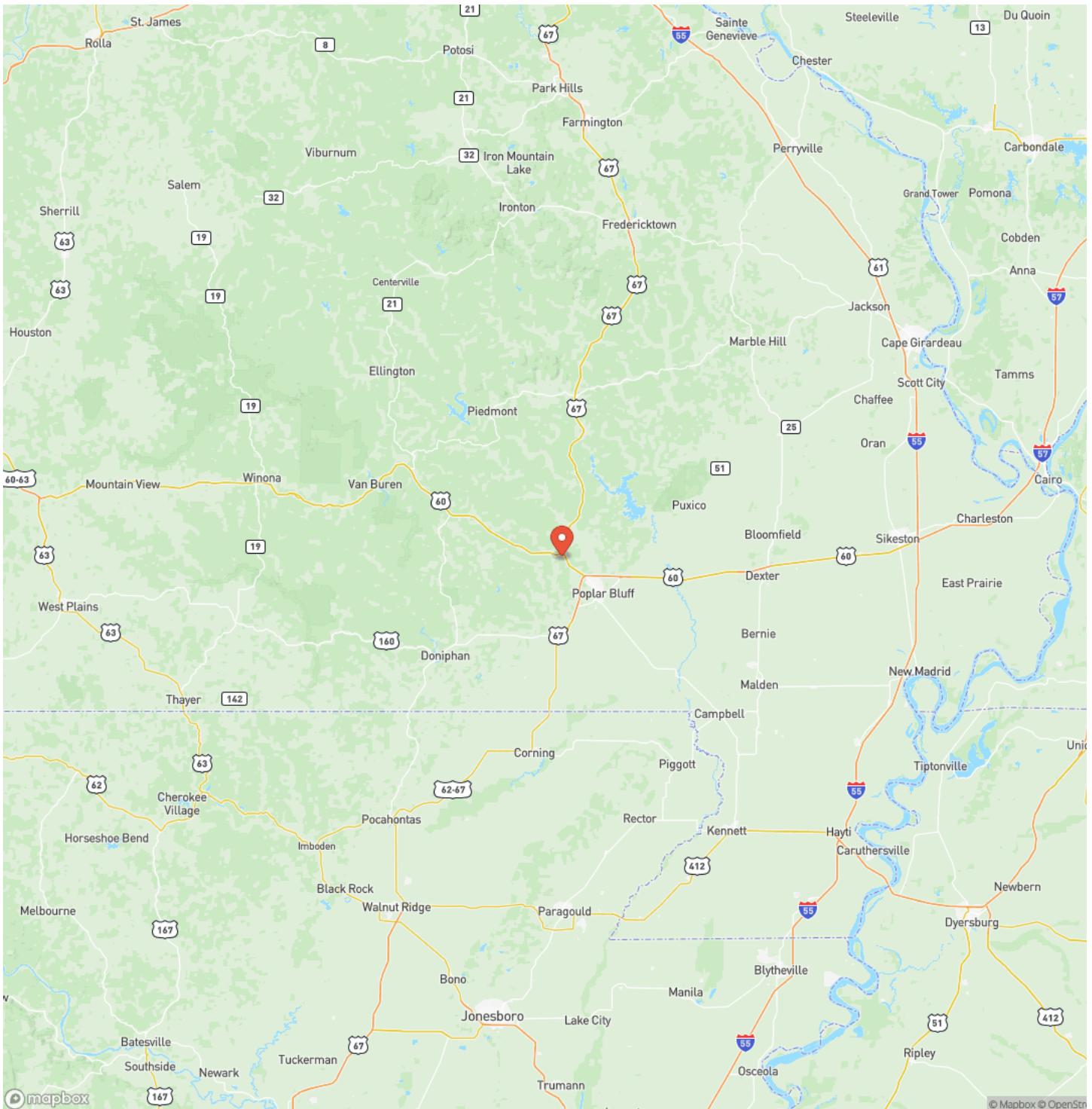
MossyOakProperties.com

Locator Map



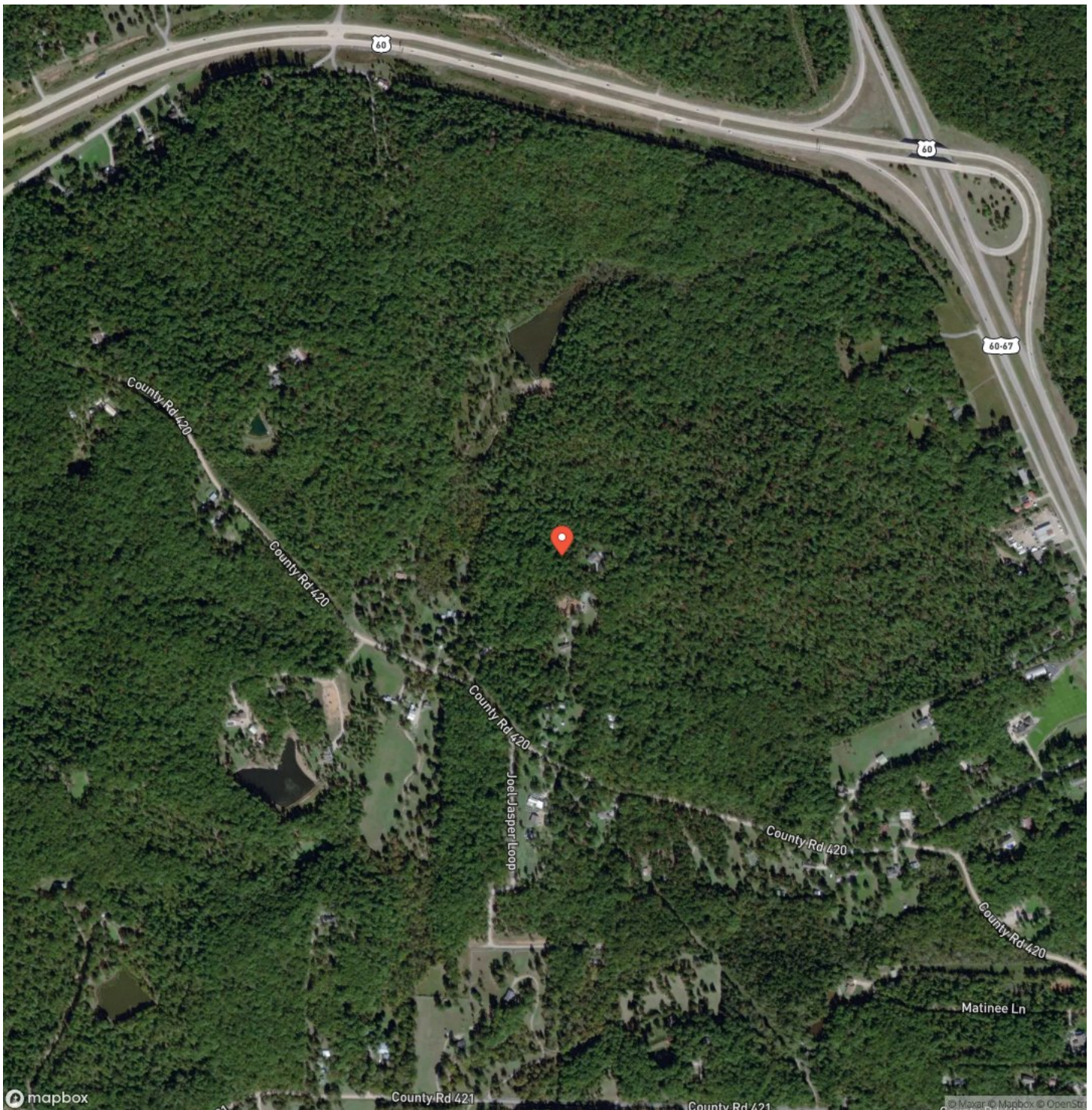
Modern Craftsman 3 Bed, 2 Bath Home on 13+ Acres in Butler County, MO
Poplar Bluff, MO / Butler County

Locator Map



Modern Craftsman 3 Bed, 2 Bath Home on 13+ Acres in Butler County, MO
Poplar Bluff, MO / Butler County

Satellite Map



MORE INFO ONLINE:

MossyOakProperties.com

Modern Craftsman 3 Bed, 2 Bath Home on 13+ Acres in Butler County, MO Poplar Bluff, MO / Butler County

LISTING REPRESENTATIVE

For more information contact:



Representative

Mossy Oak Properties

Mobile

(573) 718-2800

Office

(573) 712-2252

Email

mozark@mossyoakproperties.com

Address

947 N Westwood Blvd

City / State / Zip

Poplar Bluff, MO 63901

NOTES



MORE INFO ONLINE:

MossyOakProperties.com

This image shows a blank sheet of white paper with horizontal ruling lines. The lines are evenly spaced and run across the width of the page. There are no margins, text, or other markings on the paper.



DISCLAIMERS

Information in this brochure is provided solely for information purposes and does not constitute an offer to sell or advertise real estate outside the states in which broker or agent licensed. The information presented has been obtained from sources deemed to be reliable, but is not guaranteed or warranted by the agent, broker, or the sellers of these properties. This offering is subject to errors, omissions, prior sale, price change, correction or withdrawal from the market without notice. All references to age, square footage, income, expenses, acreage, carrying capacity, and land classification, etc. are approximate. Prospective buyers are chargeable with and expected to conduct their own independent investigation of the information and the property and to rely only on those results. Sellers reserve the right to accept or reject any and all offers without liability to any buyer or cooperating broker.

Maps are provided for illustration purposes only, the accuracy is not warranted. Parcels on interactive maps are not adjusted to match aerial backgrounds. This information is for reference purposes only and is not a legal document. Data maps contain errors. The seller and seller's agent are making known to all potential buyers that there may be variations between the location of the existing fence lines and the legal description of the deeded property. Seller and seller's agent make no warranties with regard to the location of the fence lines in relationship to the deeded property lines, nor does the Seller make any warranties or representations with regard to the specific acreage contained within the fenced property lines. Seller is selling the property in an "as is" condition, which includes the location of the fences as they exist. Boundaries shown on the accompanying maps are approximate, based on county parcel data. The maps are not to scale. The accuracy of the maps is not guaranteed. Prospective buyers are encouraged to verify fence lines, deeded property lines and acreages using a licensed surveyor at their own expense.



Mossy Oak Properties Mozark Realty
947 N. Westwood Blvd.
Poplar Bluff, MO 63901
(573) 712-2252
MossyOakProperties.com

