

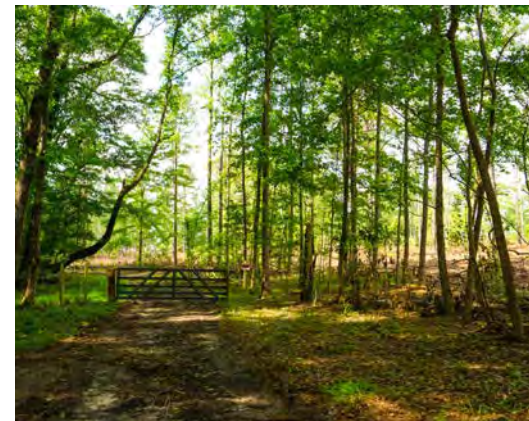


FARRELL'S MILL II

BARNWELL COUNTY, SC

115.74 +/- ACRES

\$441,664



PROPERTY DESCRIPTION

The Farrell's Mill II property is primarily wooded, containing roughly 40+/- acres of hardwood bottomland and 70+/- acres of recently thinned pine plantation providing wildlife habitat diversity. Farrell's Mill II option has roughly 2,226 feet of paved road frontage off of Farrells Mill Road, and an adequate internal road system that makes way to multiple potential homesites. Water features are abundant on this property with over 1,774 feet of Turkey Creek road frontage and a 3-acre stocked fish pond.

PROPERTY FEATURES:

- 3-acre stocked fish pond
- Stick built 30x15 shed
- Fresh water well
- Electrical Service
- 2,226 feet of paved road frontage
- 1,774 feet of creek frontage (Turkey Creek)

DIRECTIONS:

From Blackville, take Hwy. 78 west towards Williston for 3 miles. Turn left onto Melody Lane, continue for 1.8 miles and Farrell's Mill is located directly in front/across Reynolds Road.

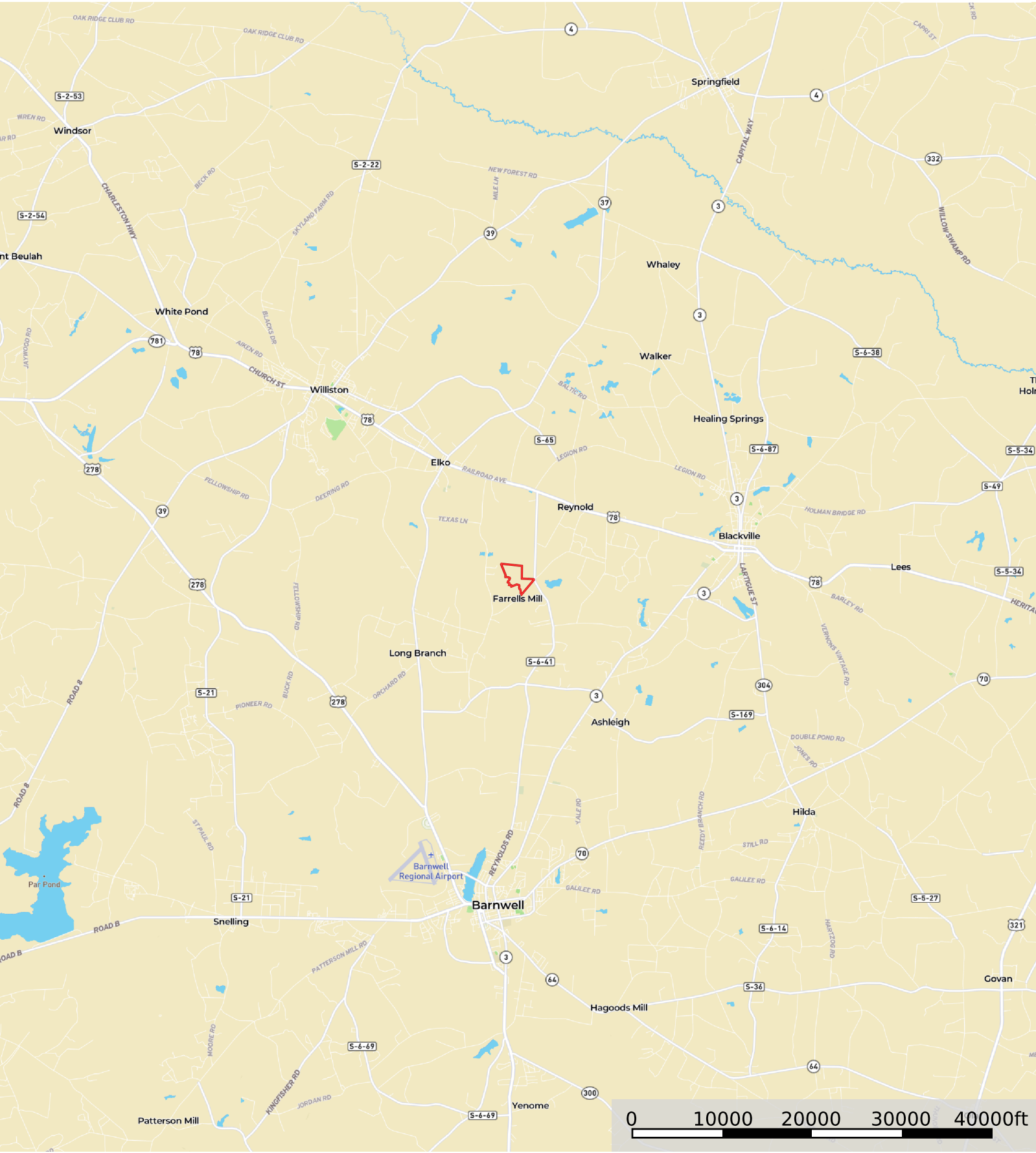
CONTACT

Todd Crosby BIC, ALC

O: 843.782.5700 - M: 843.909.0159

Email: todd Crosby@crosbylandco.com

www.CrosbyLandCo.com

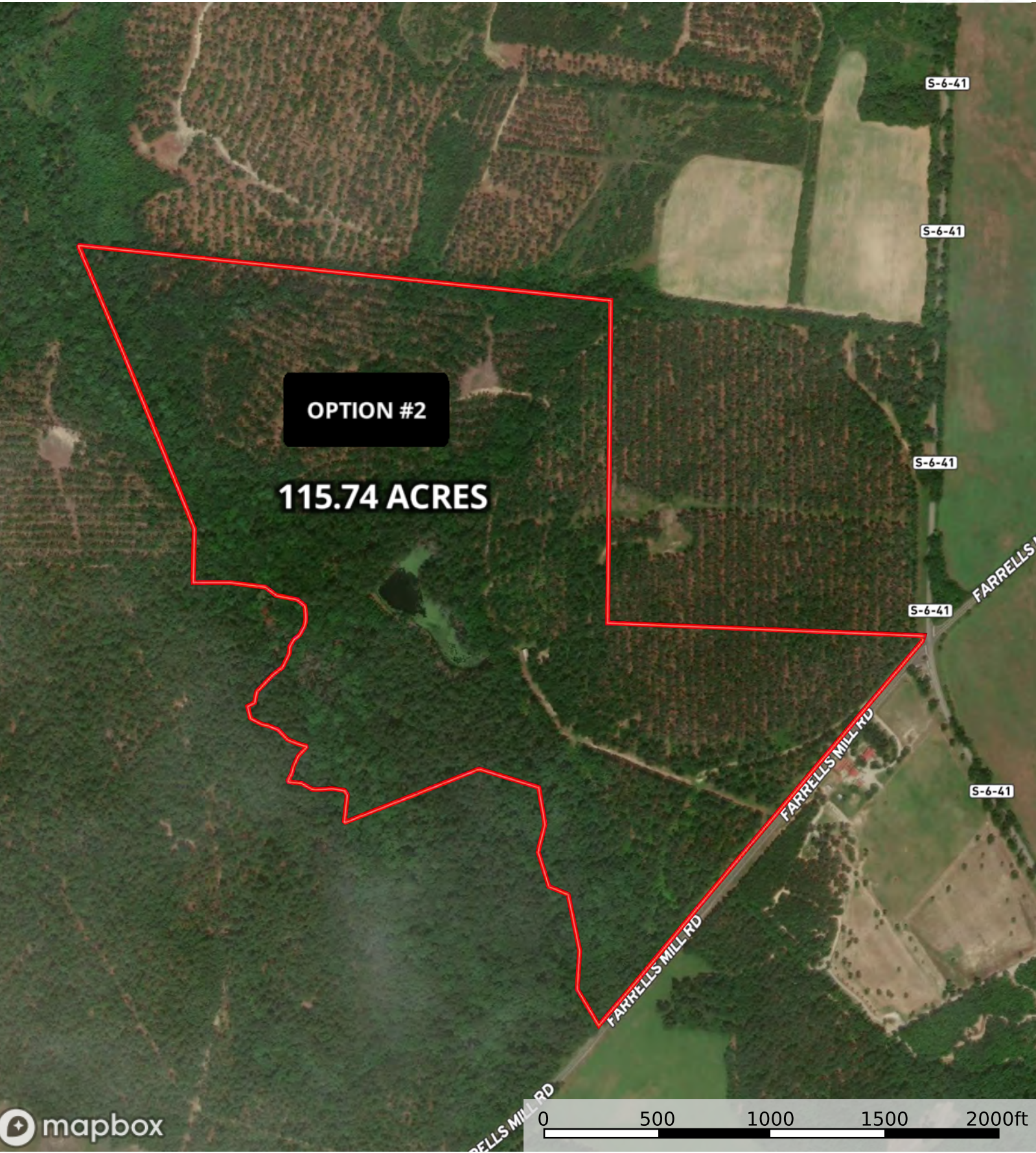


 Boundary

Farrell's Mill II
Barnwell County, South Carolina, AC +/-



Boundary



 Boundary