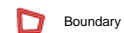
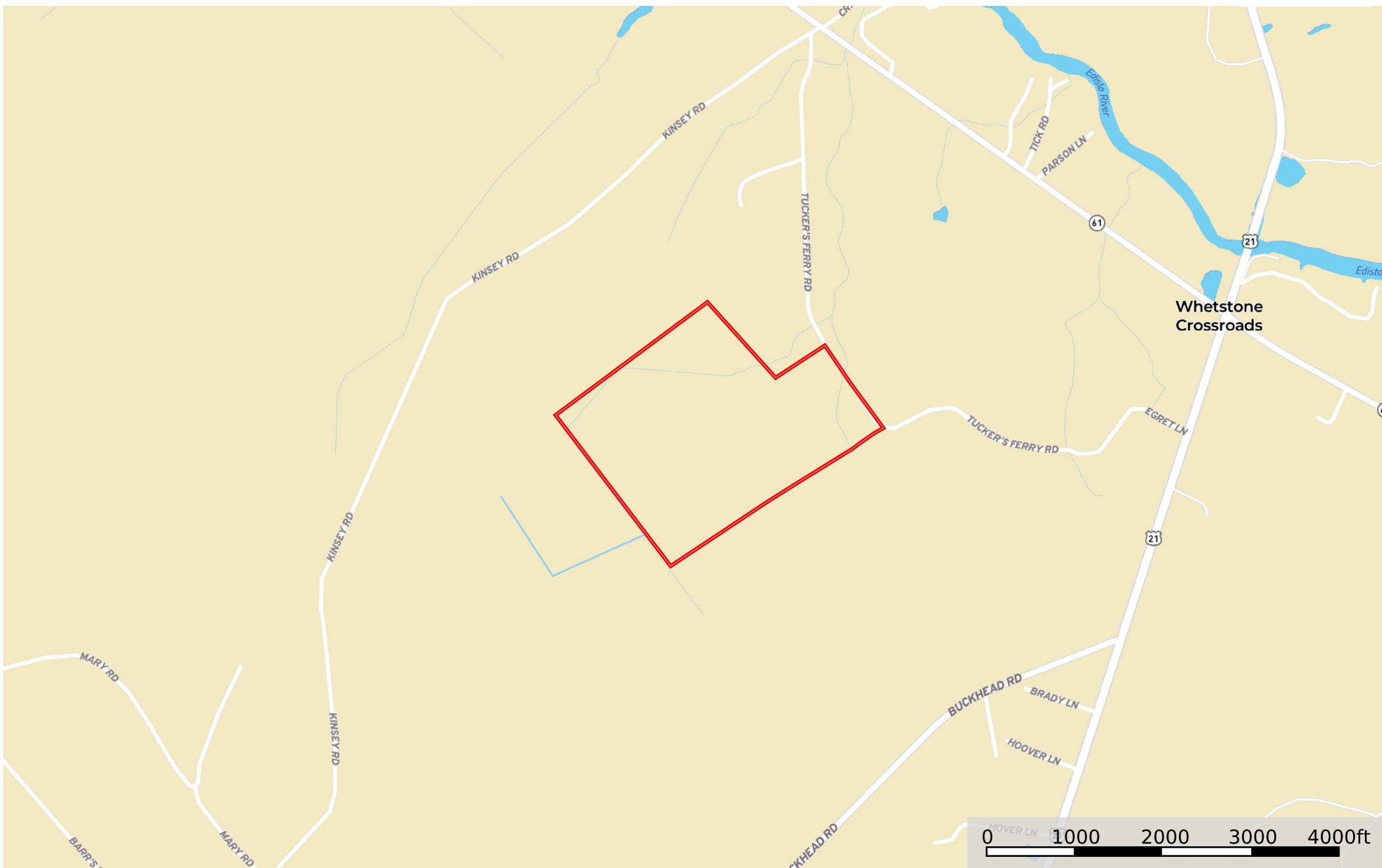


Bamberg County, South Carolina, 128.76 AC +/-



**Disclaimer:** All information provided is assumed accurate and correct but no assumptions of liability are intended. Neither the seller nor the agent of the seller represent the accuracy of the information provided. No representations or warranties are expressed or implied as to the property, its condition, usage, acreage, or boundaries. This offering is subject to errors and omissions as well as changes including price or withdrawal without notice.

**Todd Crosby**  
P: 8437825700

ToddCrosby@crosbylandco.com

300 Carn St.



The information contained herein was obtained from sources deemed to be reliable.  
MapRight Services makes no warranties or guarantees as to the completeness or accuracy thereof.