

**43.19 acres of farm and timber land in Gates County
NC!
Off Middle Swamp Rd
Gates, NC 27937**

\$239,900
43.190± Acres
Gates County



**43.19 acres of farm and timber land in Gates County NC!
Gates, NC / Gates County**

SUMMARY

Address

Off Middle Swamp Rd

City, State Zip

Gates, NC 27937

County

Gates County

Type

Farms, Hunting Land, Recreational Land, Undeveloped Land,
Timberland, Lot

Latitude / Longitude

36.47525 / -76.664

Acreage

43.190

Price

\$239,900

Property Website

<https://www.mossoakproperties.com/property/43-19-acres-of-farm-and-timber-land-in-gates-county-nc-gates-north-carolina/102099/>



43.19 acres of farm and timber land in Gates County NC! Gates, NC / Gates County

PROPERTY DESCRIPTION

A versatile tract combining open farmland and timber, offering the perfect setting for a homestead, equestrian estate, or personal farming operation.

Prime Farmland & Versatile Investment Opportunity

This property presents an outstanding opportunity for those seeking productive farmland with long-term upside. With a proven track record of agricultural use, the land is well-suited for continued cultivation, and the option to lease the farmland creates immediate income potential for investors.

Featuring over 450 feet of road frontage, this tract offers excellent accessibility and flexibility, making it ideal for a variety of uses—from farming operations to a private country homesite or future investment hold. The layout allows for easy access while still maintaining a sense of privacy and seclusion.

The property offers a wide-open setting ready for your vision, whether you're looking to build, create a recreational getaway, or establish a small farm or equestrian setup. Its combination of usability and natural beauty makes it appealing to a wide range of buyers.

Wildlife is plentiful, with deer, turkey, and bear commonly found in the area, adding to the recreational value and overall enjoyment of the land.

Conveniently positioned with quick access to Virginia and within a reasonable drive to the Outer Banks, this location provides the perfect mix of rural living and accessibility to work, travel, and coastal recreation.

Whether you're looking to farm, invest, or build, this property offers flexibility, income potential, and room to grow in a desirable area.

For more information on this and other land for sale in Gates County, contact John Perez at [252-325-4766](tel:252-325-4766) or by email at jperez@mossyoakproperties.com, or visit landandfarmsrealty.com.

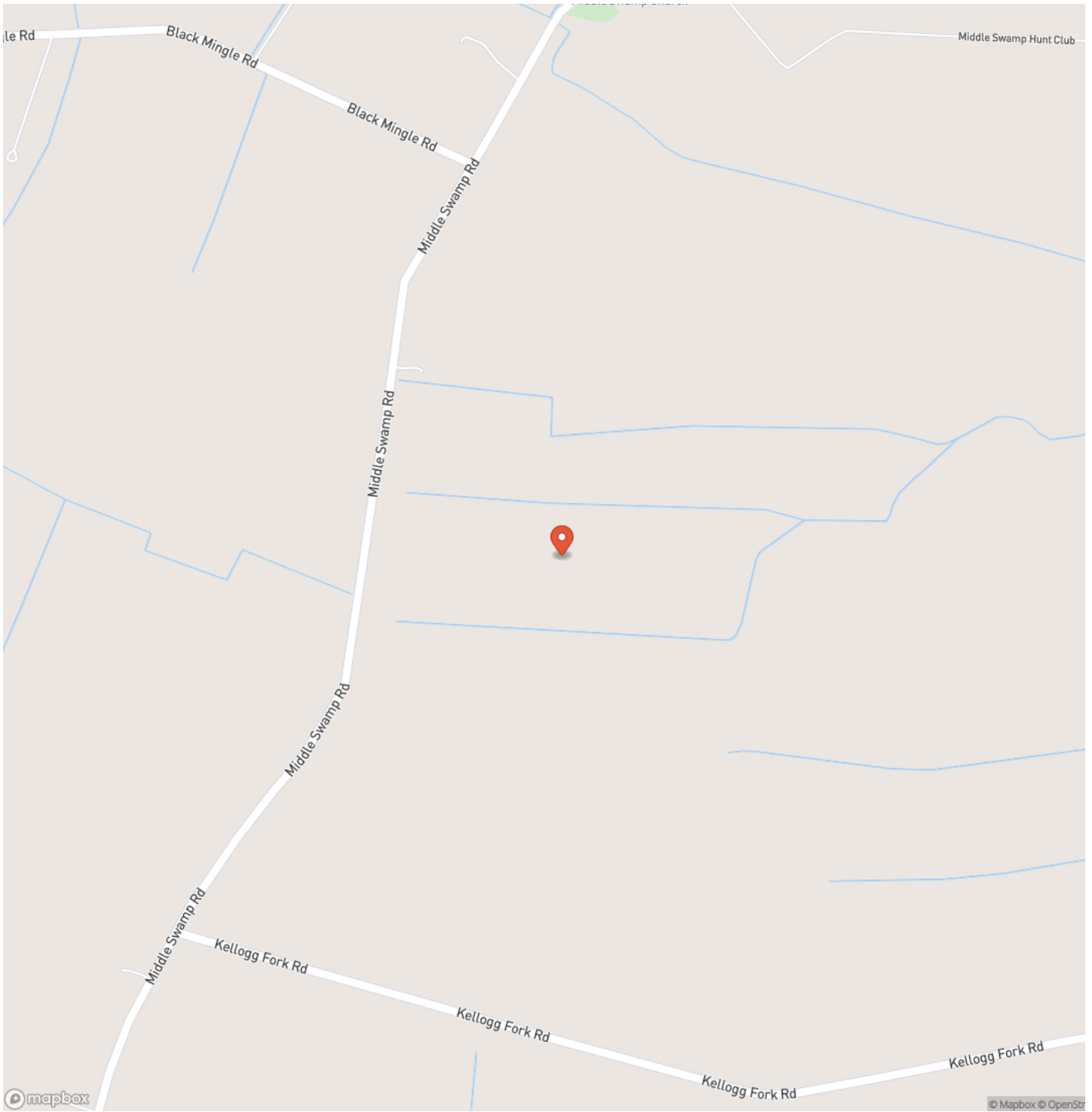


43.19 acres of farm and timber land in Gates County NC!
Gates, NC / Gates County



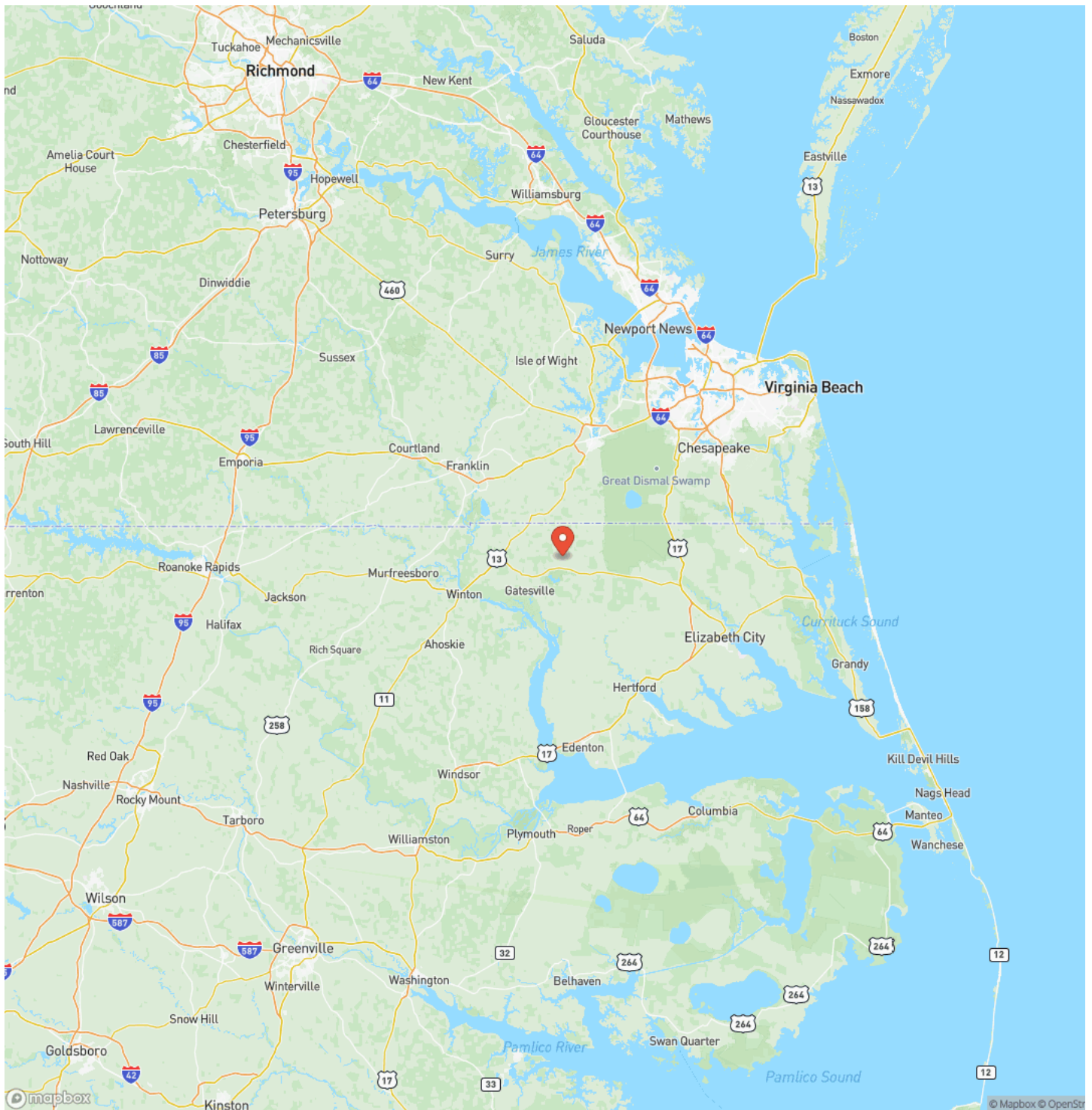
43.19 acres of farm and timber land in Gates County NC!
Gates, NC / Gates County

Locator Map



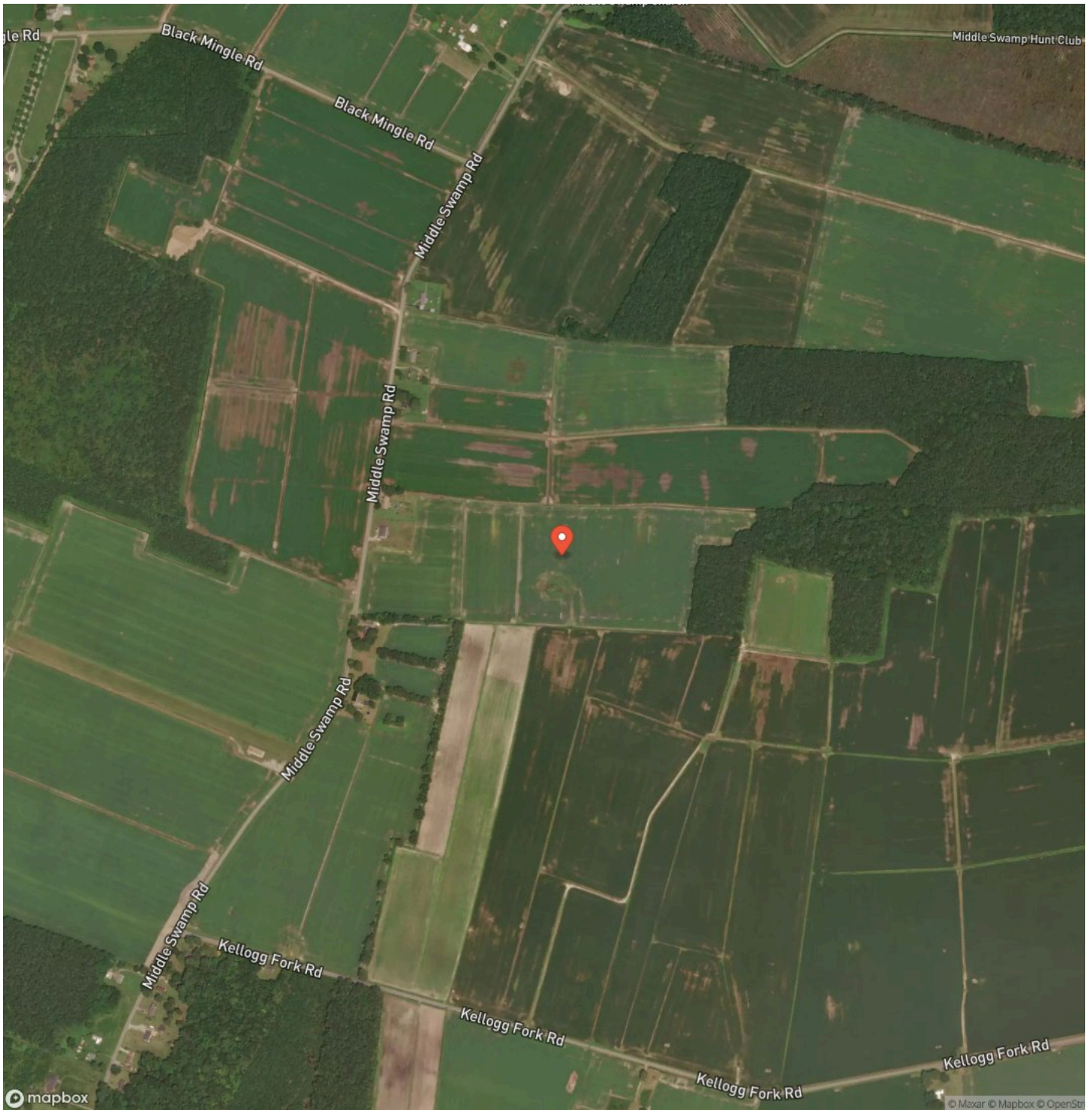
43.19 acres of farm and timber land in Gates County NC!
Gates, NC / Gates County

Locator Map



43.19 acres of farm and timber land in Gates County NC!
Gates, NC / Gates County

Satellite Map



DISCLAIMERS

Information in this brochure is provided solely for information purposes and does not constitute an offer to sell or advertise real estate outside the states in which broker or agent licensed. The information presented has been obtained from sources deemed to be reliable, but is not guaranteed or warranted by the agent, broker, or the sellers of these properties. This offering is subject to errors, omissions, prior sale, price change, correction or withdrawal from the market without notice. All references to age, square footage, income, expenses, acreage, carrying capacity, and land classification, etc. are approximate. Prospective buyers are chargeable with and expected to conduct their own independent investigation of the information and the property and to rely only on those results. Sellers reserve the right to accept or reject any and all offers without liability to any buyer or cooperating broker.

Maps are provided for illustration purposes only, the accuracy is not warranted. Parcels on interactive maps are not adjusted to match aerial backgrounds. This information is for reference purposes only and is not a legal document. Data maps contain errors. The seller and seller's agent are making known to all potential buyers that there may be variations between the location of the existing fence lines and the legal description of the deeded property. Seller and seller's agent make no warranties with regard to the location of the fence lines in relationship to the deeded property lines, nor does the Seller make any warranties or representations with regard to the specific acreage contained within the fenced property lines. Seller is selling the property in an "as is" condition, which includes the location of the fences as they exist. Boundaries shown on the accompanying maps are approximate, based on county parcel data. The maps are not to scale. The accuracy of the maps is not guaranteed. Prospective buyers are encouraged to verify fence lines, deeded property lines and acreages using a licensed surveyor at their own expense.

Mossy Oak Properties Land and Farms Realty
101 Budleigh Street, Suite F
Manteo, NC 27954
(844) 480-5263
www.landandfarmsrealty.com

