

**89 acres of residential and recreational land for sale in
Giles County, VA!
1504 Hutchison Rd.
New Castle, VA 24127**

\$4,200,000
89± Acres
Giles County



89 acres of residential and recreational land for sale in Giles County, VA!
New Castle, VA / Giles County

SUMMARY

Address

1504 Hutchison Rd.

City, State Zip

New Castle, VA 24127

County

Giles County

Type

Hunting Land, Recreational Land, Residential Property, Horse Property, Single Family, Lot, Business Opportunity

Latitude / Longitude

37.383206 / -80.475247

Dwelling Square Feet

2079

Bedrooms / Bathrooms

2 / 2

Acreage

89

Price

\$4,200,000

Property Website

<https://www.mossyoakproperties.com/property/89-acres-of-residential-and-recreational-land-for-sale-in-giles-county-va-giles-virginia/80900/>



89 acres of residential and recreational land for sale in Giles County, VA! New Castle, VA / Giles County

PROPERTY DESCRIPTION

For immediate assistance with this listing call John Perez at [252-325-4766](tel:252-325-4766).

89 Acres Encompassed by 15,000 Acres of DESIGNATED WILDERNESS, Beautiful Cabin Overlooking Pond, Native Trout Stream Running Through Property, Great Opportunity for Horses and Back Country Riding. Call John Perez at [252-325-4766](tel:252-325-4766) to schedule a showing today!

Secluded Mountain Retreat with Custom Cabin, Stocked Pond, and Wilderness Access

Overview

Nestled in the serene mountains of Giles County, Virginia, this extraordinary 2079 sq. ft. custom-built cabin offers a unique blend of luxury, privacy, and natural splendor. Accessible only through national forest, crossing the iconic Appalachian Trail and a locked gate, this retreat ensures unparalleled seclusion. Just 45 minutes from Blacksburg, home of the Virginia Tech Hokies, it combines modern comforts with the untouched beauty of the 15,000-acre Mountain Lake Wilderness. Perfect for hunting, fishing, horseback riding, or escaping into nature, this property is a rare gem for those seeking a private sanctuary.

The Property

This expansive estate is a haven for outdoor enthusiasts and those craving self-sufficiency. Surrounded by federally protected wilderness where motorized vehicles and logging are prohibited, the property guarantees tranquility and pristine surroundings. A 1-acre spring-fed pond, stocked with largemouth bass, crappie, and panfish, offers exceptional fishing just steps from the cabin. A native trout stream flows through the land, ideal for anglers seeking a challenge. Cleared fields and natural springs make the property suitable for horses or livestock, while areas with young trees can be converted into additional pasture. The backyard features a fenced garden with raised beds and fruit trees, designed to protect your harvest from deer and wildlife. A historic 1059 sq. ft. home by the pond, structurally sound, awaits renovation as a charming secondary residence or guest camp. Additionally, a 960 sq. ft. fully enclosed garage, complete with tools, machinery, and custom-sawn lumber, is paired with a 560 sq. ft. pole barn for storing a tractor, attachments, and more lumber—all included with the property.

The Cabin

Meticulously crafted, this 2079 sq. ft. cabin blends rustic charm with modern sophistication. Featuring 4 bedrooms and 2 bathrooms, it boasts a custom rock chimney and wood stove for cozy evenings. The upstairs loft, serving as the master bedroom, offers breathtaking views of the pond, perfect for watching sunrises and wildlife. Two inviting porches provide serene spots for morning coffee or relaxing while overlooking the pond or garden. A two-car garage and basement add 834 sq. ft. of versatile space for storage, hobbies, or projects, making this cabin both functional and luxurious.

Area Attractions

The property's location in Giles County offers access to premier outdoor and cultural attractions:

- **Mountain Lake Wilderness:** Adjacent to the property, this 15,000-acre protected area is ideal for hiking, hunting, horseback riding, and fishing in pristine creeks. Its motor-free status ensures a peaceful retreat. (<https://www.vawilderness.org/mountain-lake-wilderness.html>)
- **Appalachian Trail:** Within walking distance, this world-renowned trail offers scenic hikes and backpacking adventures through stunning mountain landscapes. (<https://appalachiantrail.org/explore/hike-the-a-t/interactive-map/>)
- **Cascades Recreation Area:** A 20-25 minute drive to Pembroke, VA, this 4-mile round-trip hike leads to a 66-foot waterfall on Little Stony Creek, perfect for hiking, swimming, and photography (Cascades National Recreation Trail). (<https://www.virginia.org/listing/cascades-national-recreation-trail/6927/>)
- **New River:** About 40 minutes away, this ancient river is a hotspot for kayaking, canoeing, tubing, and fishing for smallmouth bass (New River Water Trail). (<https://www.newriverwatertrail.com/NRWT/>)

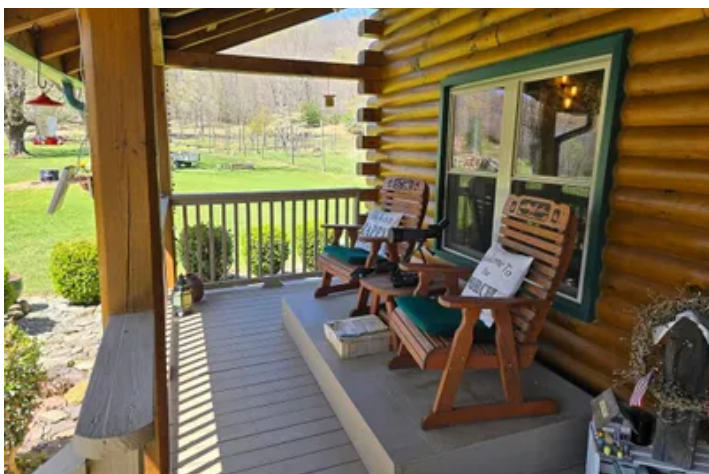
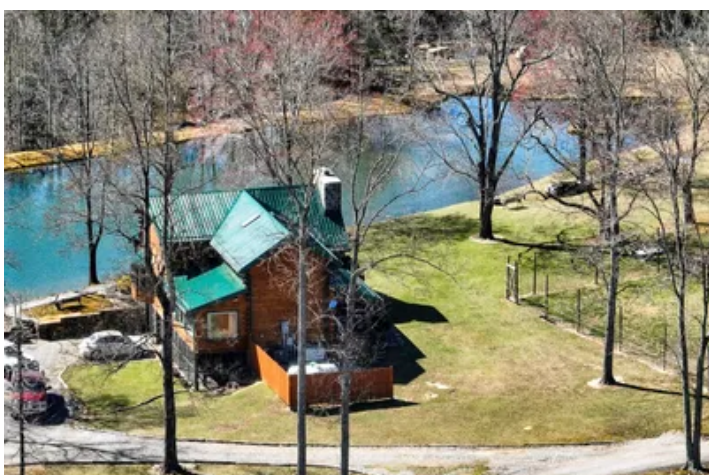
- **Virginia Tech (Blacksburg):** 45 minutes away, this vibrant college town offers campus tours, Hokies football games, the Moss Arts Center, and the Hahn Horticulture Garden. (<https://www.vt.edu/>)
- **Pandapas Pond:** Approximately 40 minutes away, this scenic pond in Jefferson National Forest features a 1-mile loop trail for walking, birdwatching, and fishing. (<https://dwr.virginia.gov/vbwt/sites/pandapas-pond/>)

Nearby Towns:

- Pearisburg, VA: 47 minutes
- Newport, VA: 30 minutes
- Blacksburg, VA: 45 minutes

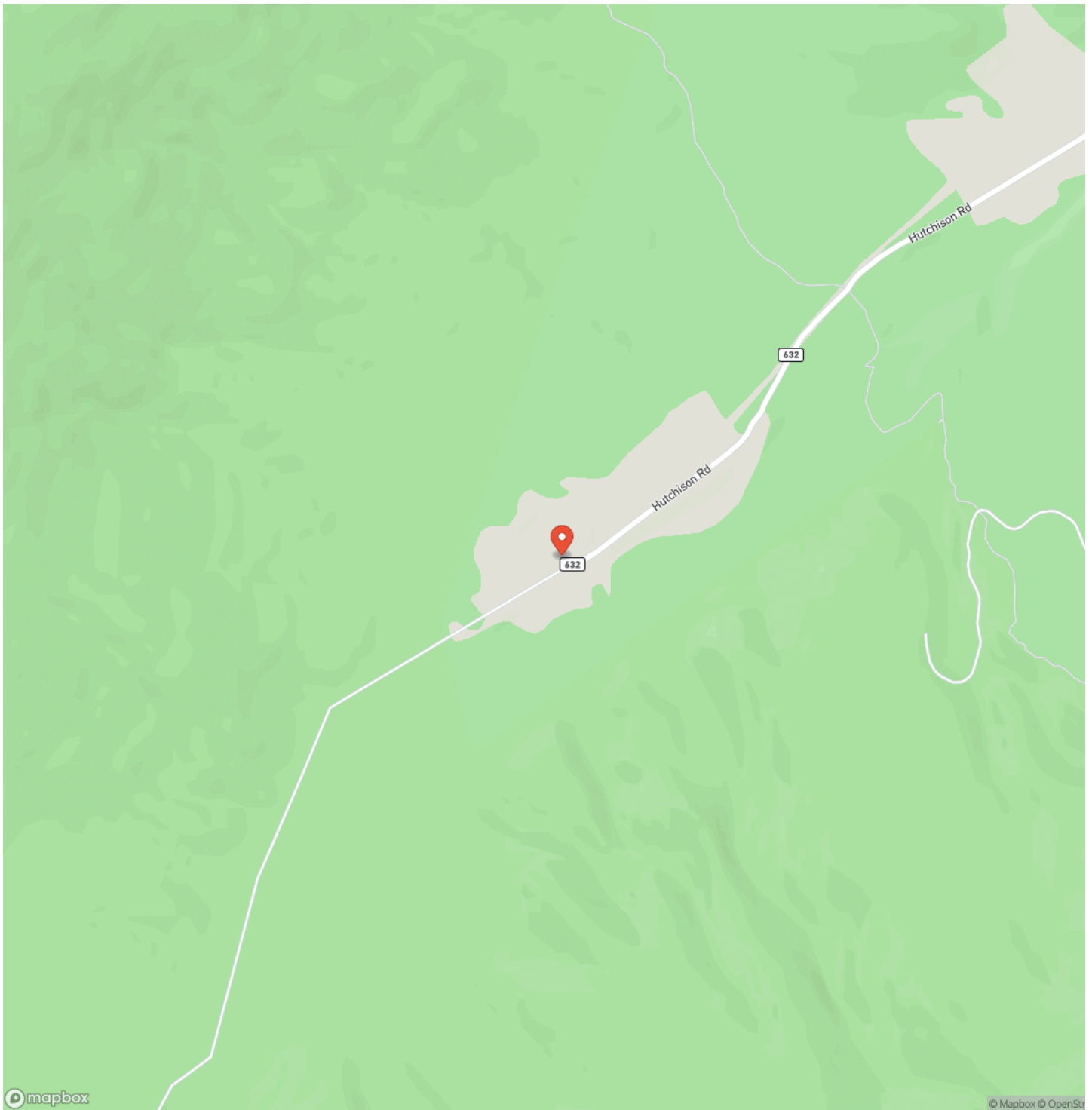
This secluded retreat is a once-in-a-lifetime opportunity to own a private paradise surrounded by protected wilderness. Whether you envision a luxurious escape, a recreational haven, or a self-sufficient homestead, this property delivers unmatched potential. With a custom cabin, stocked pond, native trout stream, and access to endless outdoor adventures, it's the perfect blend of comfort and nature. Contact Mathew Seldomridge at [540-968-1097](tel:540-968-1097) to schedule your private showing and discover this rare legacy property today. For more information on this and other land for sale in Giles County, contact John Perez at [252-325-4766](tel:252-325-4766) or by email at jperez@mossyoakproperties.com, or visit landandfarmsrealty.com.

89 acres of residential and recreational land for sale in Giles County, VA!
New Castle, VA / Giles County



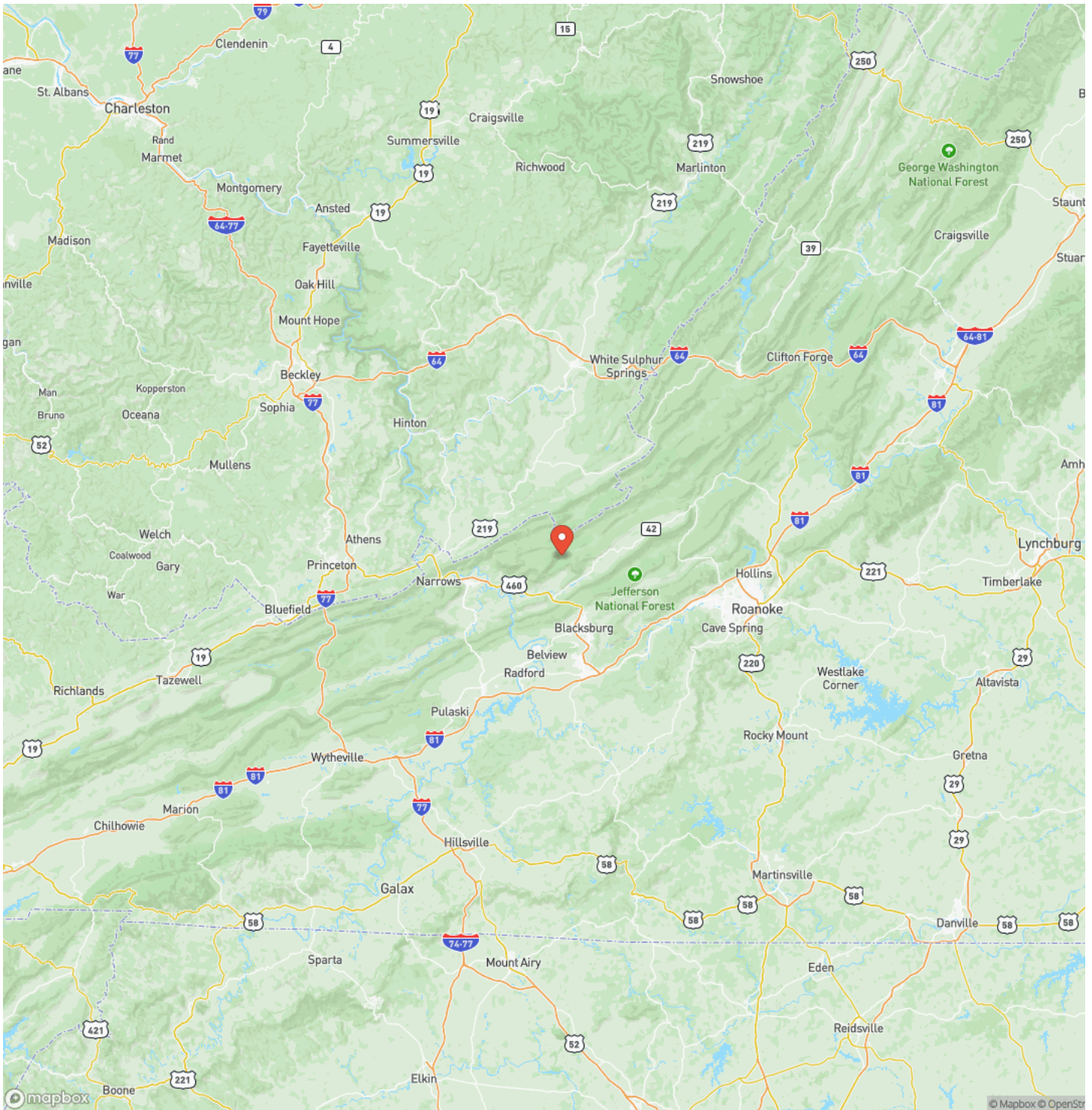
89 acres of residential and recreational land for sale in Giles County, VA!
New Castle, VA / Giles County

Locator Map



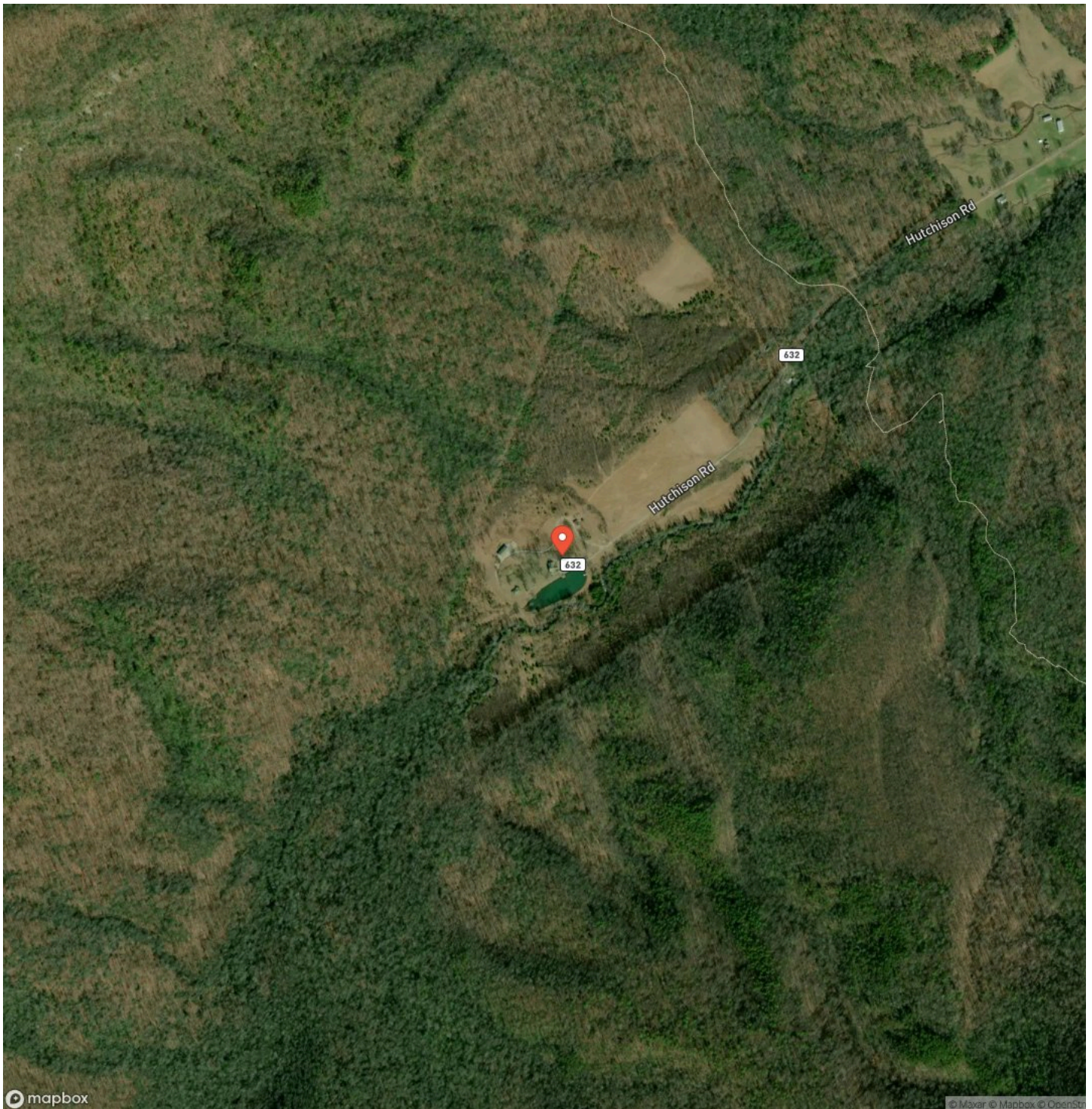
89 acres of residential and recreational land for sale in Giles County, VA!
New Castle, VA / Giles County

Locator Map



89 acres of residential and recreational land for sale in Giles County, VA!
New Castle, VA / Giles County

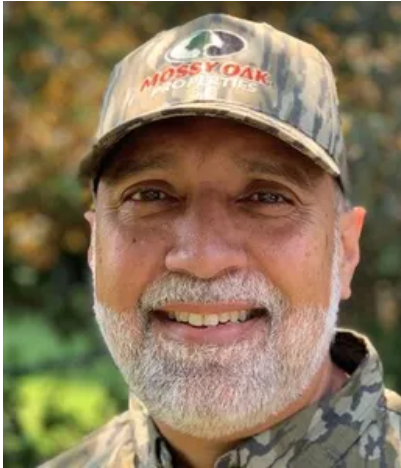
Satellite Map



89 acres of residential and recreational land for sale in Giles County, VA! New Castle, VA / Giles County

LISTING REPRESENTATIVE

For more information contact:



Representative

John Perez

Mobile

(252) 325-4766

Office

(844) 480-5263

Email

jperrez@mossyoakproperties.com

Address

101 Budleigh Street unit F

City / State / Zip

NOTES

[illegible]

This image shows a full page of blank white paper with horizontal ruling lines. The lines are evenly spaced and run across the width of the page, providing a template for writing or drawing. There are no margins, text, or other markings present.



DISCLAIMERS

Information in this brochure is provided solely for information purposes and does not constitute an offer to sell or advertise real estate outside the states in which broker or agent licensed. The information presented has been obtained from sources deemed to be reliable, but is not guaranteed or warranted by the agent, broker, or the sellers of these properties. This offering is subject to errors, omissions, prior sale, price change, correction or withdrawal from the market without notice. All references to age, square footage, income, expenses, acreage, carrying capacity, and land classification, etc. are approximate. Prospective buyers are chargeable with and expected to conduct their own independent investigation of the information and the property and to rely only on those results. Sellers reserve the right to accept or reject any and all offers without liability to any buyer or cooperating broker.

Maps are provided for illustration purposes only, the accuracy is not warranted. Parcels on interactive maps are not adjusted to match aerial backgrounds. This information is for reference purposes only and is not a legal document. Data maps contain errors. The seller and seller's agent are making known to all potential buyers that there may be variations between the location of the existing fence lines and the legal description of the deeded property. Seller and seller's agent make no warranties with regard to the location of the fence lines in relationship to the deeded property lines, nor does the Seller make any warranties or representations with regard to the specific acreage contained within the fenced property lines. Seller is selling the property in an "as is" condition, which includes the location of the fences as they exist. Boundaries shown on the accompanying maps are approximate, based on county parcel data. The maps are not to scale. The accuracy of the maps is not guaranteed. Prospective buyers are encouraged to verify fence lines, deeded property lines and acreages using a licensed surveyor at their own expense.

Mossy Oak Properties Land and Farms Realty
101 Budleigh Street, Suite F
Manteo, NC 27954
(844) 480-5263
www.landandfarmsrealty.com

