

35.43 acre Hunting and Timber tract for sale in Hertford County, NC!
346 Menola St Johns Rd
Ahoskie, NC 27910

\$89,000
35.430± Acres
Hertford County



35.43 acre Hunting and Timber tract for sale in Hertford County, NC!
Ahoskie, NC / Hertford County

SUMMARY

Address

346 Menola St Johns Rd

City, State Zip

Ahoskie, NC 27910

County

Hertford County

Type

Hunting Land, Recreational Land, Timberland

Latitude / Longitude

36.327454 / -77.089300

Acreage

35.430

Price

\$89,000

Property Website

<https://www.mossyoakproperties.com/property/35-43-acre-hunting-and-timber-tract-for-sale-in-hertford-county-nc-hertford-north-carolina/98099/>



35.43 acre Hunting and Timber tract for sale in Hertford County, NC! Ahoskie, NC / Hertford County

PROPERTY DESCRIPTION

For immediate assistance with this listing please call John Perez at [252-325-4766](tel:252-325-4766).

Looking for an affordable hunting and timber investment tract in the heart of one of the best recreational locations in the state? This 35.43 ac tract borders Cutawhiskie Creek and is loaded with Deer and Wild Turkey. Call John Perez at [252-325-4766](tel:252-325-4766) to schedule a showing today!

35.43-Acre Timber Tract with frontage on Cutawhiskie Creek in Ahoskie, NC - Prime Investment & Hunting Retreat

Discover a rare blend of productive timberland, wildlife habitat, and natural beauty on this 35.43-acre tract nestled in the serene St. John's area of Hertford County, North Carolina. This well-managed property offers a unique opportunity for long-term timber investment and outdoor recreation in a region known for its abundant game and rural charm.

Timber Investment Potential

The property features a 12-year-old pine plantation with evenly spaced, vigorous pines establishing a strong future timber asset. With good access throughout and well-defined rows, this stand is positioned for continued growth, low maintenance, and solid timberland value appreciation over time.

Scenic Creekfront Boundary

Bordering the eastern edge of the property is Cutawhiskey Creek, adding not only aesthetic appeal but also enhancing the ecological diversity of the tract. This tranquil waterway creates natural bottomland habitat, supports diverse wildlife, and helps define property lines with scenic riparian character. The creek corridor offers year-round interest and potential for small game habitat, seasonal water access, and peaceful views - a standout feature that sets this parcel apart.

Hunting & Wildlife Opportunities

This part of northeastern North Carolina is widely respected among outdoor enthusiasts for its white-tailed deer and wild turkey populations. With mature mixed hardwood drains, pine edges, and extensive cover nearby, the landscape supports consistent game activity. Local hunting records and anecdotal reports reflect healthy deer numbers and quality gobbler encounters, making this an attractive hunting haven either for private enjoyment or as a leasable recreational property.

Location & Lifestyle

Conveniently located near Ahoskie and the broader St. John's community, this tract combines rural peace with reasonable access to local amenities. The surrounding region's mosaic of timberland, cropland, and low-pressure forest offers both solitude and strong outdoor recreation potential.

Whether you're looking to grow your timberland portfolio, build a secluded hunting retreat, or enjoy creekside nature in eastern North Carolina, this Cutawhiskey Creek-bordered timber tract is a compelling opportunity you won't want to miss.

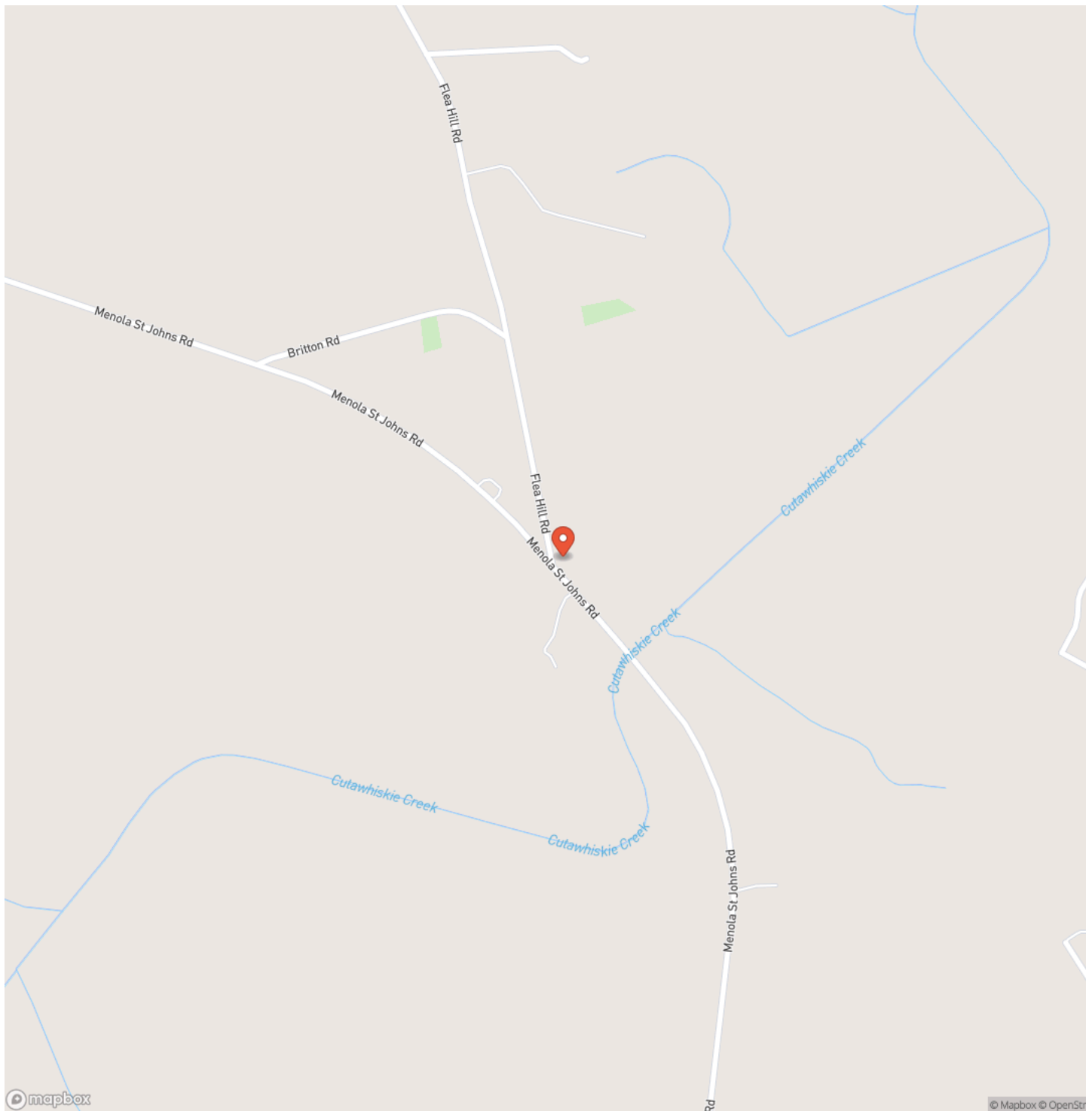
For more information on this and other land for sale in Hertford County, contact John Perez at [252-325-4766](tel:252-325-4766) or by email at jperez@mossyoakproperties.com, or visit landandfarmsrealty.com.



35.43 acre Hunting and Timber tract for sale in Hertford County, NC!
Ahoskie, NC / Hertford County

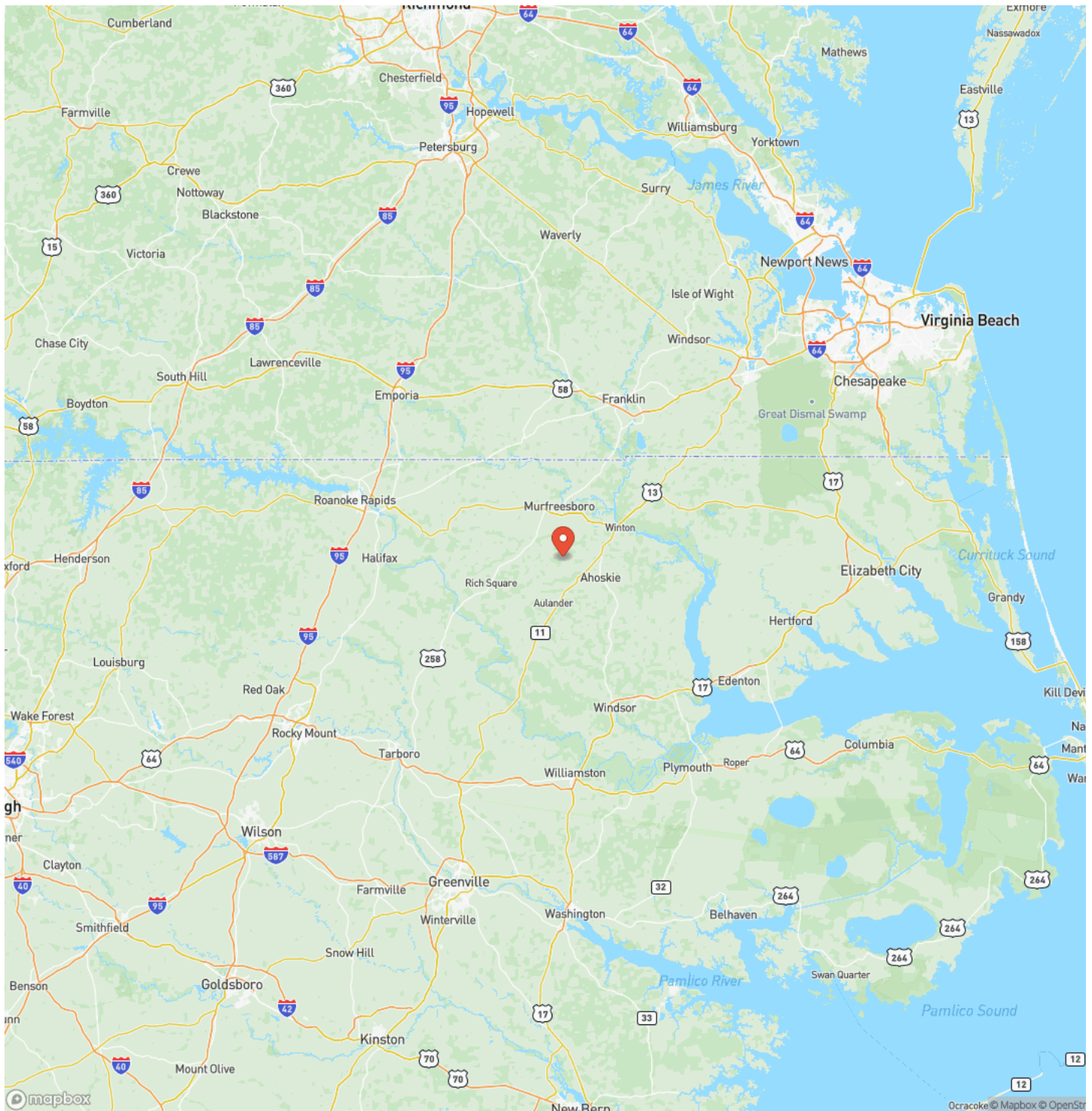


Locator Map



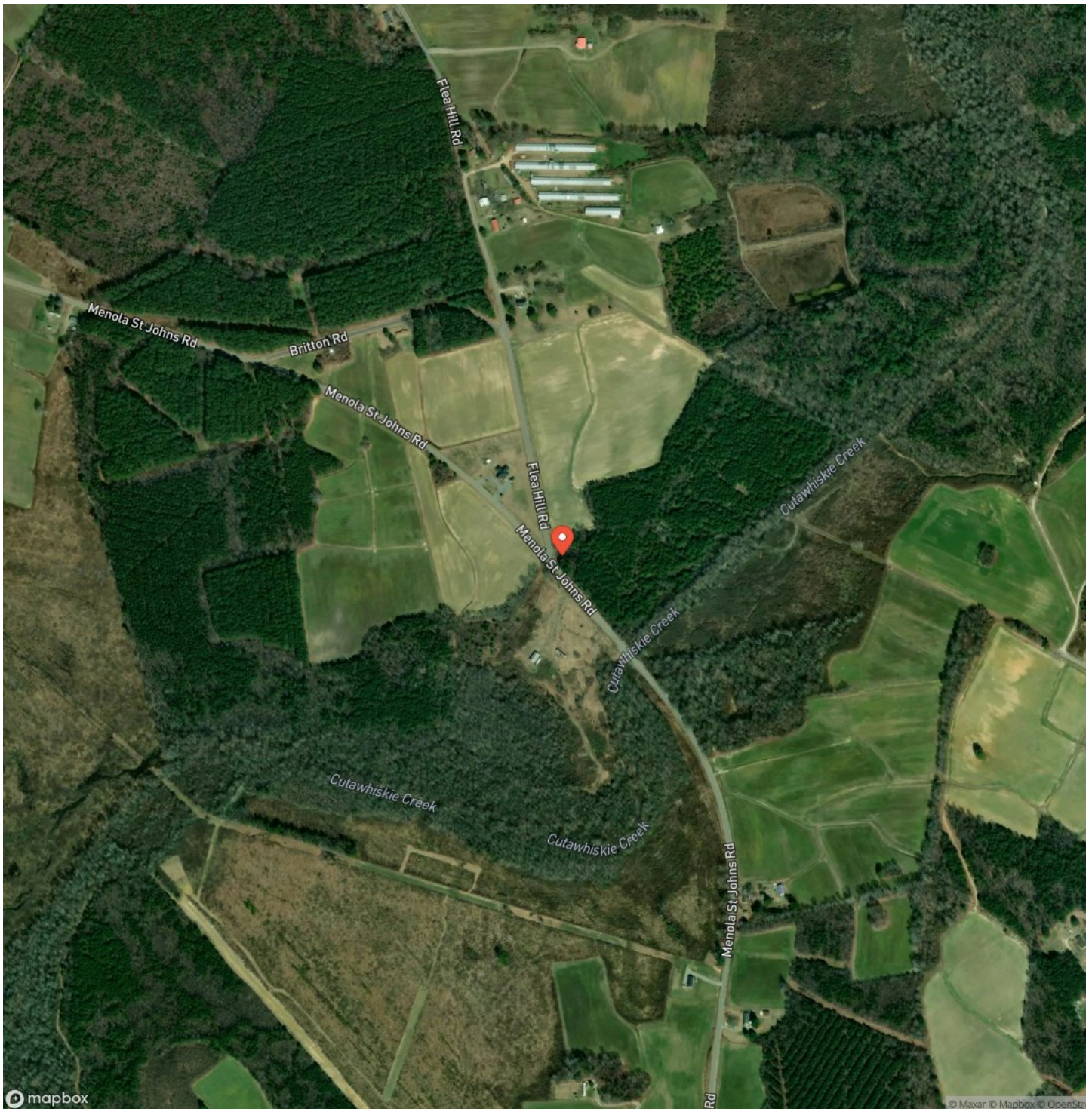
35.43 acre Hunting and Timber tract for sale in Hertford County, NC! Ahoskie, NC / Hertford County

Locator Map



35.43 acre Hunting and Timber tract for sale in Hertford County, NC!
Ahoskie, NC / Hertford County

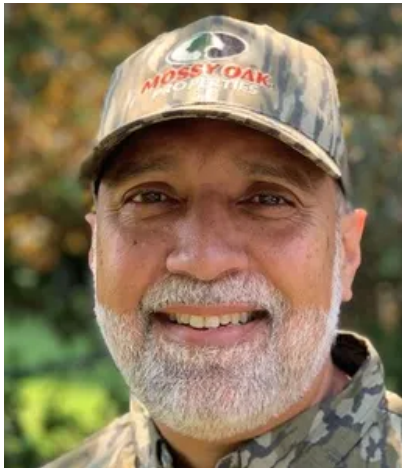
Satellite Map



35.43 acre Hunting and Timber tract for sale in Hertford County, NC! Ahoskie, NC / Hertford County

LISTING REPRESENTATIVE

For more information contact:



Representative

John Perez

Mobile

(252) 325-4766

Office

(844) 480-5263

Email

jperrez@mossyoakproperties.com

Address

101 Budleigh Street

City / State / Zip

NOTES

[illegible]

This image shows a single sheet of white paper with horizontal ruling lines. The lines are evenly spaced and run across the width of the page. There are no margins, text, or other markings on the paper.



DISCLAIMERS

Information in this brochure is provided solely for information purposes and does not constitute an offer to sell or advertise real estate outside the states in which broker or agent licensed. The information presented has been obtained from sources deemed to be reliable, but is not guaranteed or warranted by the agent, broker, or the sellers of these properties. This offering is subject to errors, omissions, prior sale, price change, correction or withdrawal from the market without notice. All references to age, square footage, income, expenses, acreage, carrying capacity, and land classification, etc. are approximate. Prospective buyers are chargeable with and expected to conduct their own independent investigation of the information and the property and to rely only on those results. Sellers reserve the right to accept or reject any and all offers without liability to any buyer or cooperating broker.

Maps are provided for illustration purposes only, the accuracy is not warranted. Parcels on interactive maps are not adjusted to match aerial backgrounds. This information is for reference purposes only and is not a legal document. Data maps contain errors. The seller and seller's agent are making known to all potential buyers that there may be variations between the location of the existing fence lines and the legal description of the deeded property. Seller and seller's agent make no warranties with regard to the location of the fence lines in relationship to the deeded property lines, nor does the Seller make any warranties or representations with regard to the specific acreage contained within the fenced property lines. Seller is selling the property in an "as is" condition, which includes the location of the fences as they exist. Boundaries shown on the accompanying maps are approximate, based on county parcel data. The maps are not to scale. The accuracy of the maps is not guaranteed. Prospective buyers are encouraged to verify fence lines, deeded property lines and acreages using a licensed surveyor at their own expense.

Mossy Oak Properties Land and Farms Realty
101 Budleigh Street, Suite F
Manteo, NC 27954
(844) 480-5263
www.landandfarmsrealty.com

