

Hackleburg Commercial Lot
000 Hwy 43
Hackleburg, AL 35564

\$235,000
5± Acres
Marion County



Hackleburg Commercial Lot

Hackleburg, AL / Marion County

SUMMARY

Address

000 Hwy 43

City, State Zip

Hackleburg, AL 35564

County

Marion County

Type

Commercial, Lot, Business Opportunity

Latitude / Longitude

34.276471 / -87.832557

Taxes (Annually)

38

Acreage

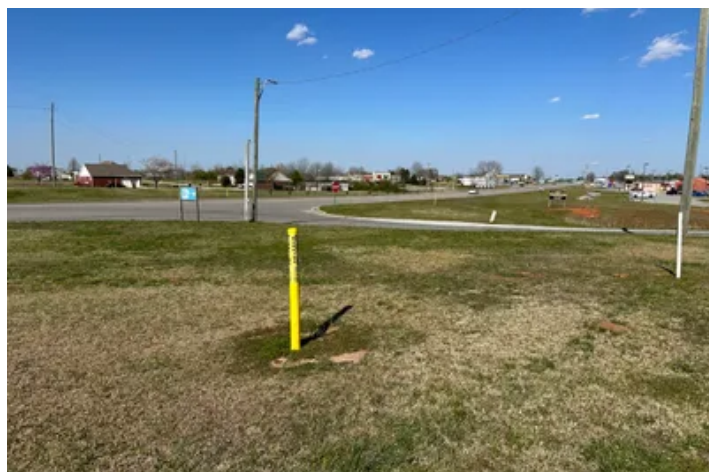
5

Price

\$235,000

Property Website

<https://www.mossyOakproperties.com/property/hackleburg-commercial-lot-marion-alabama/79016/>



Hackleburg Commercial Lot Hackleburg, AL / Marion County

PROPERTY DESCRIPTION

Prime Commercial Development Site in Hackleburg, Alabama

Seize the opportunity to own a strategically located 5+/- acre commercial property in the heart of downtown Hackleburg, Alabama. Positioned adjacent to the Hackleburg Market and Dollar General, this site offers significant development potential due to its exceptional location and accessibility.

Property Highlights:

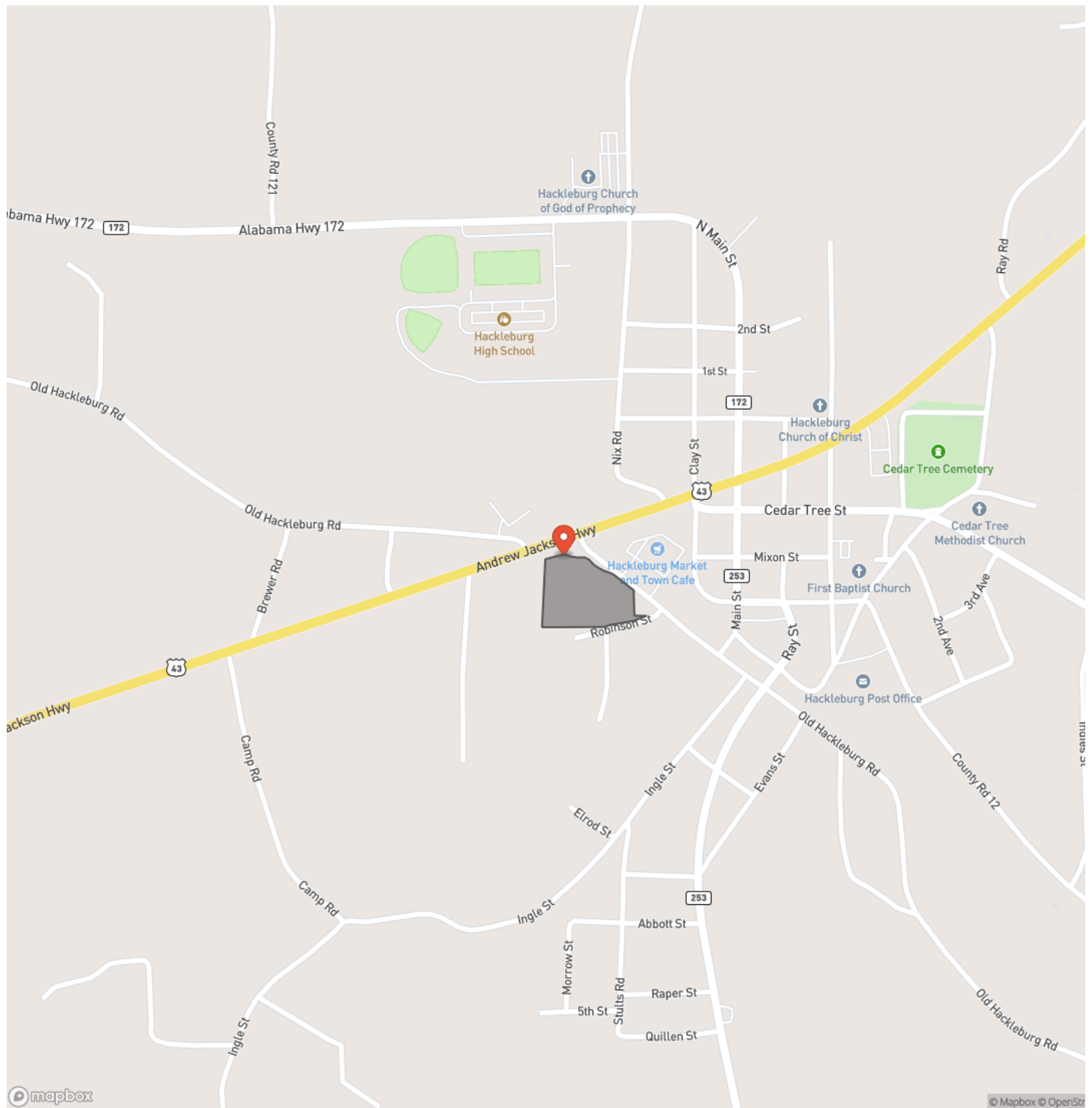
- **Triple Frontage:** The property boasts paved road frontage on Highway 43, Old Hackleburg Road, and Robinson Street, ensuring excellent visibility and access.
- **Ready for Development:** With suitable topography and readily available utilities such as power, water, gas, and internet, this site is primed for immediate development.
- **Central Location:** Situated in a vibrant area of Hackleburg, the property is conveniently located approximately 14 miles from Hamilton, 18 miles from Russellville, and 37 miles from Muscle Shoals.
- **High Traffic Area:** The proximity to key retail outlets and its location along Highway 43 ensure a steady flow of traffic, ideal for any commercial venture.

For more information, contact Austin Littrell at 256.460.1875 or email alittrell@mossyoakproperties.com

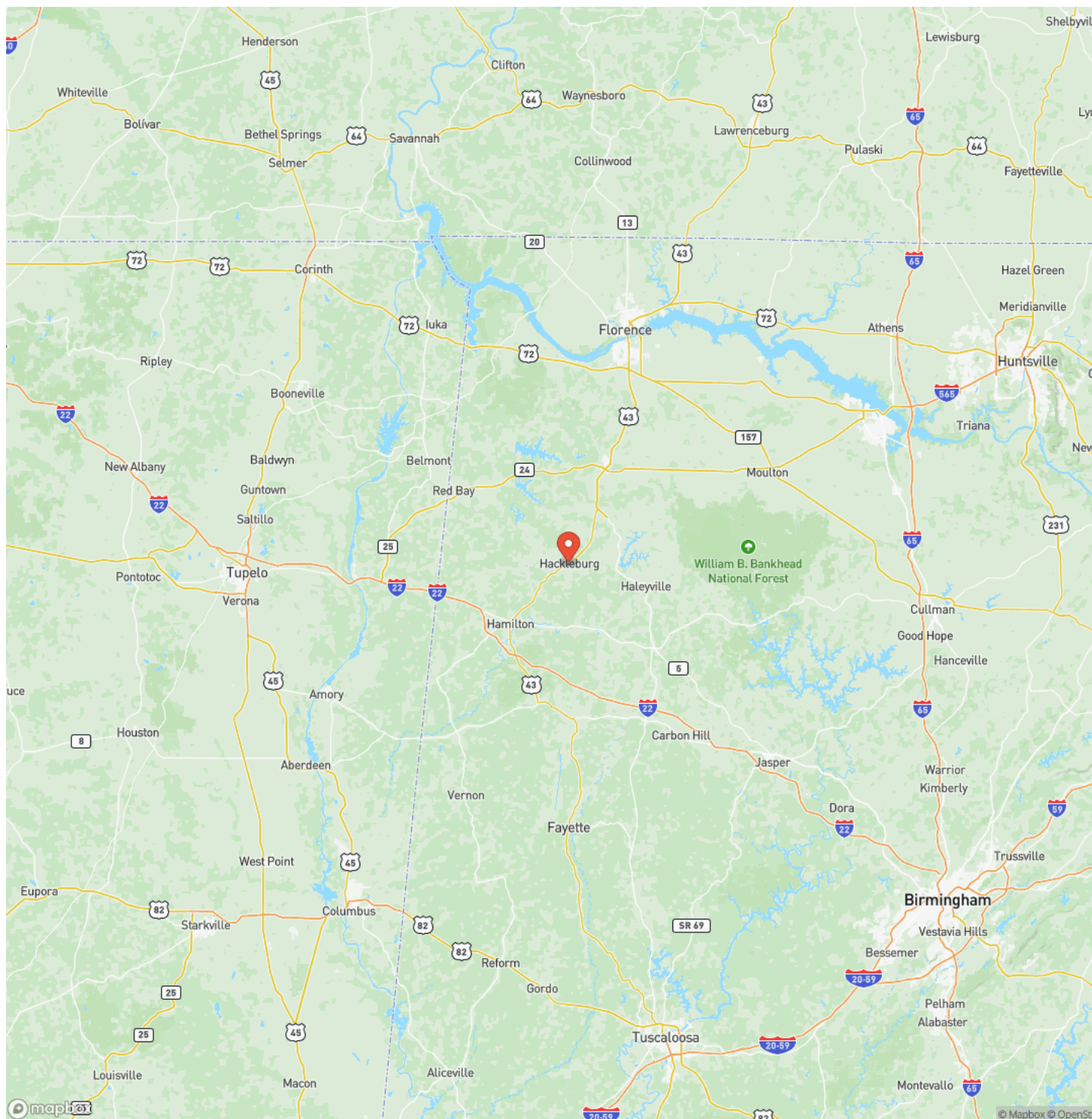
Hackleburg Commercial Lot
Hackleburg, AL / Marion County



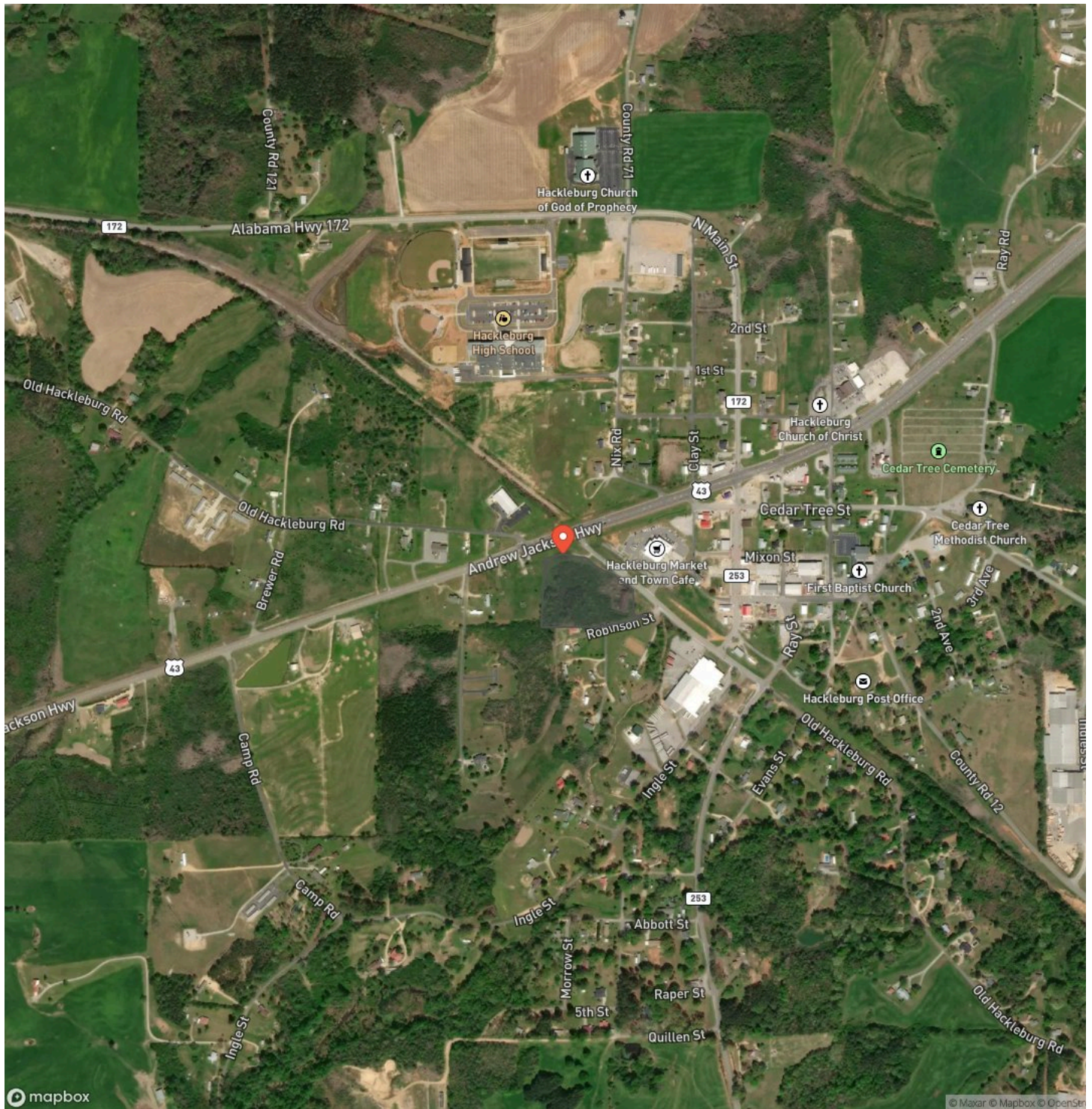
Locator Map



Locator Map



Satellite Map



Hackleburg Commercial Lot Hackleburg, AL / Marion County

LISTING REPRESENTATIVE

For more information contact:



Representative

Austin Littrell

Mobile

(256) 460-1875

Office

(256) 460-1875

Email

alittrell@mossyoakproperties.com

Address

1229 Hwy 72 East

City / State / Zip

NOTES

[illegible]

This image shows a blank sheet of white paper with horizontal ruling lines. The lines are evenly spaced and run across the width of the page. There are no margins, text, or other markings on the paper.



MORE INFO ONLINE:
MossyOakProperties.com

DISCLAIMERS

Information in this brochure is provided solely for information purposes and does not constitute an offer to sell or advertise real estate outside the states in which broker or agent licensed. The information presented has been obtained from sources deemed to be reliable, but is not guaranteed or warranted by the agent, broker, or the sellers of these properties. This offering is subject to errors, omissions, prior sale, price change, correction or withdrawal from the market without notice. All references to age, square footage, income, expenses, acreage, carrying capacity, and land classification, etc. are approximate. Prospective buyers are chargeable with and expected to conduct their own independent investigation of the information and the property and to rely only on those results. Sellers reserve the right to accept or reject any and all offers without liability to any buyer or cooperating broker.

Maps are provided for illustration purposes only, the accuracy is not warranted. Parcels on interactive maps are not adjusted to match aerial backgrounds. This information is for reference purposes only and is not a legal document. Data maps contain errors. The seller and seller's agent are making known to all potential buyers that there may be variations between the location of the existing fence lines and the legal description of the deeded property. Seller and seller's agent make no warranties with regard to the location of the fence lines in relationship to the deeded property lines, nor does the Seller make any warranties or representations with regard to the specific acreage contained within the fenced property lines. Seller is selling the property in an "as is" condition, which includes the location of the fences as they exist. Boundaries shown on the accompanying maps are approximate, based on county parcel data. The maps are not to scale. The accuracy of the maps is not guaranteed. Prospective buyers are encouraged to verify fence lines, deeded property lines and acreages using a licensed surveyor at their own expense.

Mossy Oak Properties Southeast Land & Wildlife, LLC
1229 Hwy 72 East
Tuscumbia, AL 35674
(256) 345-0074
MossyOakProperties.com

